

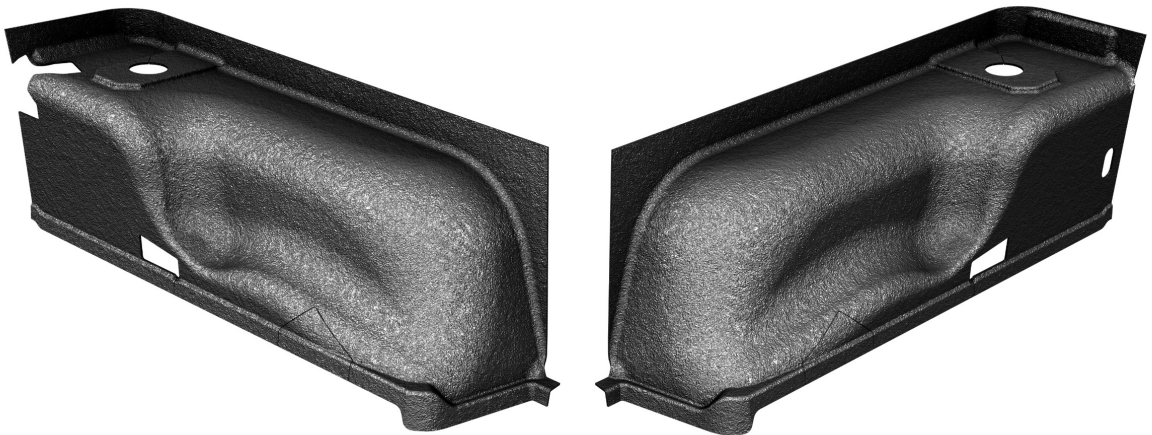


INSTALLATION INSTRUCTIONS

Armorlite® Cargo Wheelhouse Covers

Vehicle Application

Jeep® Wrangler TJ 2-Door



TJ Wheelhouse Cover Installation

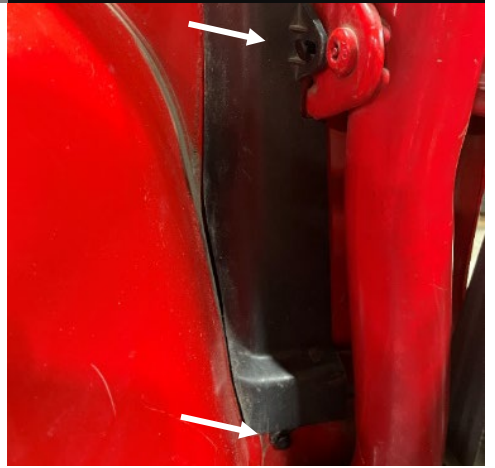
1

Pull out the factory wheelhouse covers from both sides.



2

Remove the wire harness cover on the driver side. There are two plastic clips.



3

Unscrew the seatbelt anchor bolts on both sides. T50 torx



4

Loosen the seat bracket bolts on both sides. M13 x 2 on each bracket.

NOTE: 97-02 only



TJ Wheelhouse Cover Installation

5

Make a cutout for the seat latch bracket on both sides. There are molded lines for your reference.

NOTE: 97-02 only



6

Install the Armorlite Wheelhouse Cover starting from the rear corner. Use the slit to work around the roll bar and push all the way.



7

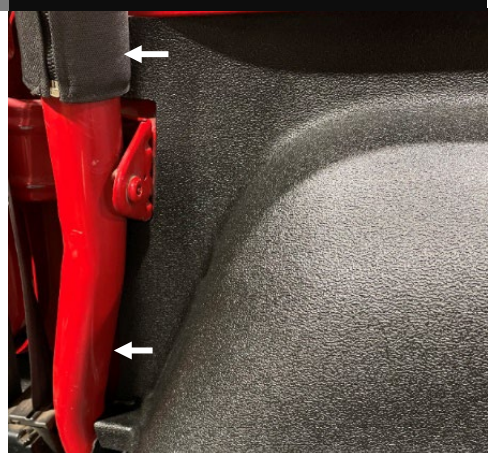
Work your way toward the front.

NOTE: Tuck behind the seat bracket on 97-02



8

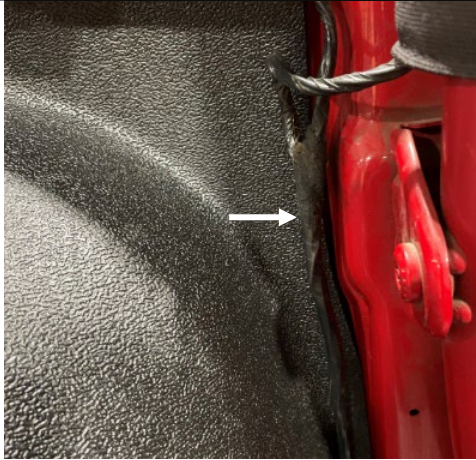
Tuck the front edge behind the roll bar on the passenger side



TJ Wheelhouse Cover Installation

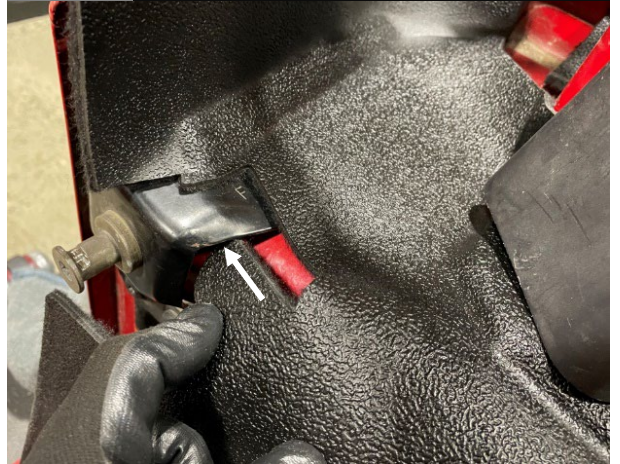
9

Tuck the front edge behind the wire harness on the driver side.



10

Tuck the small lip under the tailgate latch bracket on the driver side.



11

Tuck the upper edge under the sheet metal flange along the side and back.

NOTE: Wheelhouse cover should be tucked behind the wire harness on the driver side.



12

Lift up the front corner of the Cargo and tighten the seat bracket bolts. M13 x 2 on each bracket

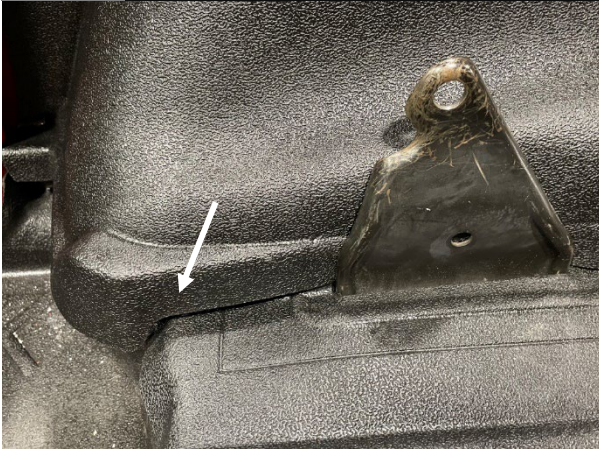
NOTE: Push bracket outboard as much as possible to make it easier to install the rear seat back in.



TJ Wheelhouse Cover Installation

13

Tuck the front corner of the Cargo back under the Wheelhouse Cover



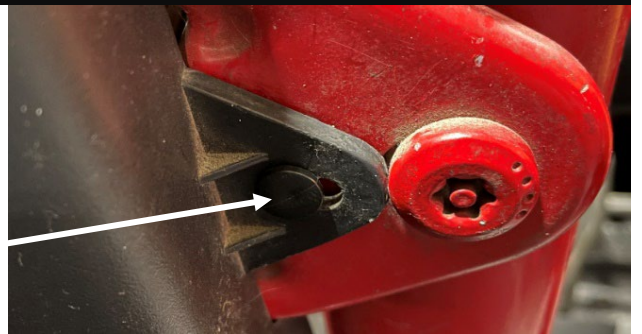
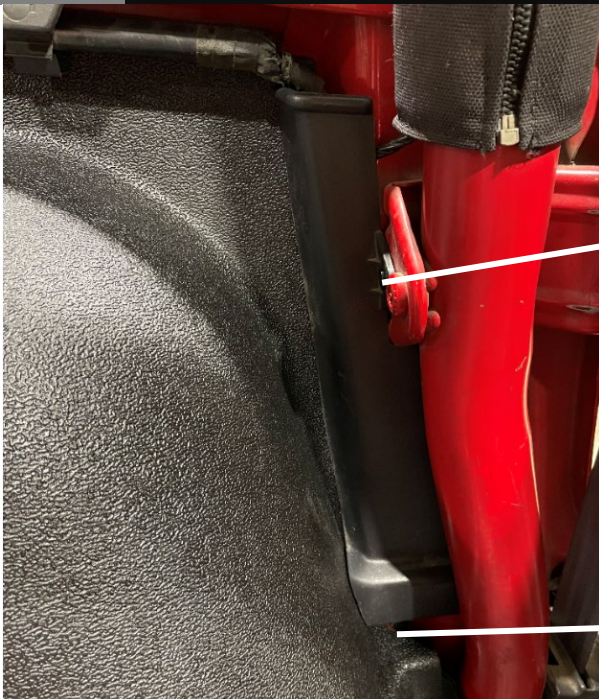
14

Reattach the seatbelt anchor bolts on both sides. T50 torx



15

Reattach the wire harness cover on the driver side with 2 plastic clips.



TJ Wheelhouse Cover Installation

16

Driver Side Wheelhouse Cover Installed



17

Passenger Side Wheelhouse Cover Installed



LIMITED LIFETIME WARRANTY

Armorlite flooring products are backed by a limited lifetime warranty for materials and workmanship, which means that our products are guaranteed not to break, tear, or deform under normal use. This limited warranty only applies when the product is correctly installed and used in the type of vehicle listed in the product description.

LENGTH OF WARRANTY

The warranty will remain in effect while the original purchaser of the Armorlite product owns the vehicle in which the product is installed. The warranty is not transferrable, which means that the warranty will terminate if you sell or otherwise give the product to someone else.

WHAT THIS WARRANTY DOES NOT COVER

Certain common sense damages to the product are NOT covered by this limited lifetime warranty:

- Intentional damage;
- Damage resulting from an accident;
- Unreasonable use or neglect;
- Improper service, installation, or removal;
- Damage resulting from product modifications;
- Damage to product prior to installation; and
- Damage, fading or discoloration from excessive wear and tear and/or excessive exposure.

HOW TO MAKE A WARRANTY CLAIM

If you have a valid warranty claim, you must follow the warranty return instructions in the "Warranty Process" section below.

HOW STATE LAW APPLIES

Armorlite's express warranties are limited to those expressly stated in this agreement. Armorlite makes no other express representations or warranties, express or implied, regarding the products, including regarding merchantability, suitability, originality, or fitness for a particular purpose, and any such warranties are expressly disclaimed. Any implied warranties, including without limitation the implied warranties of merchantability and fitness for a particular purpose, shall be limited to the duration of this limited warranty.

In no event will Armorlite be liable, whether in contract or tort (including negligence) for damages in excess of the purchase price of the product, or for any indirect, incidental, special or consequential damages of any kind, or otherwise to the fullest extent these damages may be disclaimed by law.

Some jurisdictions do not allow the limitation or exclusion of incidental or consequential damages, or a limitation on the length of an implied warranty, so the above limitations or exclusions may not apply to you. This warranty gives you specific legal rights, and you may also have other rights that vary from one jurisdiction to another.

WARRANTY PROCESS

Visit our support page and fill out the form to submit a warranty claim. You will be required to upload images to demonstrate proof of a manufacturing defect. Upon receiving your claim an investigation will occur and may take up to 4-8 business days to be completed.

If the warranty claim is approved, you will be provided with a replacement product. If your product model has been discontinued, you will be provided with another product of similar composition and price. Armorlite will ship your replacement product at no cost.

SHIPPING

You may be required to return product(s) for a more thorough investigation.

A Return Merchandise Authorization Number (RMA#) will be provided at this time. Armorlite will cover return shipping costs and provide you with a pre-paid shipping label. Please write the RMA# on the outside of the box. The product must be cleaned and returned to its original box or equivalent packaging. Packaging must be in good condition. Armorlite is not responsible for lost or damaged packages.

All products must be shipped to:
Armorlite, Inc. - Warranty
1506 East Main Street
P. O. Box: 669
Old Fort, NC 28762



GOARMORLITE.COM