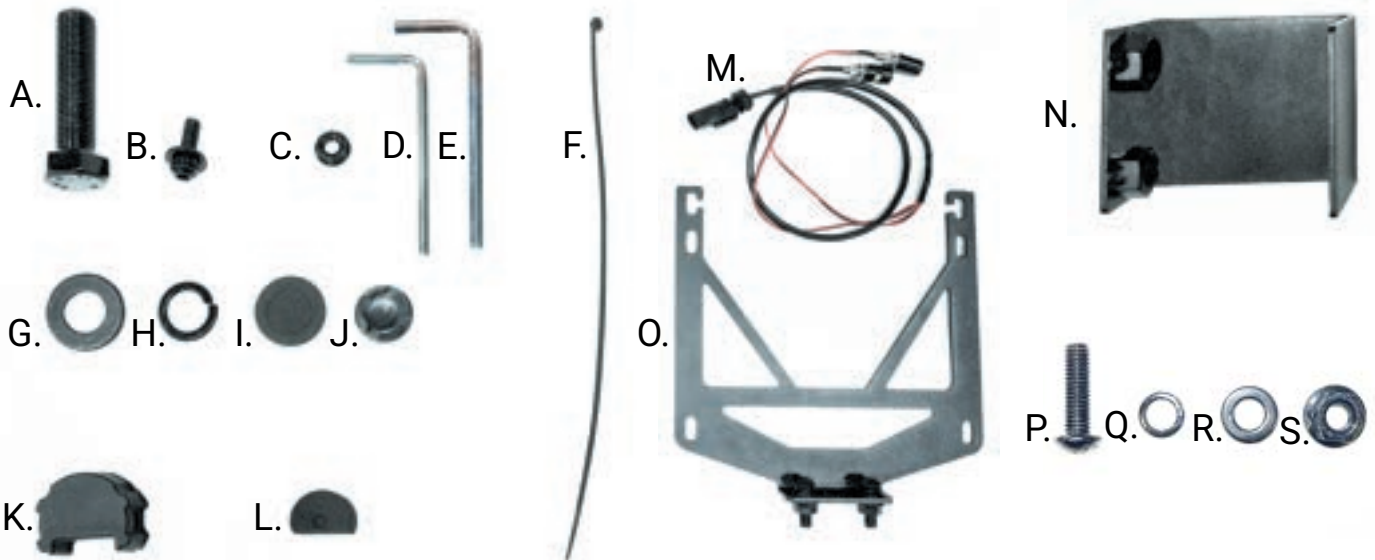




### PARTS AND TOOLS REQUIRED



#### KIT CONTENT LIST:

- |                               |                                    |                       |
|-------------------------------|------------------------------------|-----------------------|
| A. M14 - 1.25 x 55 (2)        | I. Protective Rubber Ring (4)      | Q. M8 Lock Washer (2) |
| B. M6 Buttonhead 1.0 x 20 (4) | J. Protective Cover (4)            | R. M8 Flat Washer (2) |
| C. M6 Nut (4)                 | K. Parking Sensor Security Cap (4) | S. M8 - 1.25 Nut (2)  |
| D. 4mm Hex Key                | L. Rubber Spacer (4)               |                       |
| E. 5mm Hex Key                | M. License Plate Light Wiring (1)  |                       |
| F. Wire Tie (10)              | N. M14 Nut Plate (1)               |                       |
| G. M14 Flat Washer (2)        | O. License Plate Mount (1)         |                       |
| H. M14 Lock Washer (2)        | P. M8 - 1.25 x 25 (2)              |                       |

#### TOOL LIST:

- Safety Glasses
- 8MM Socket
- 13MM Socket
- 16MM Socket
- 21MM Socket
- 10MM Wrench
- Ratchet

## A FEW WORDS ABOUT PRODUCT SAFETY:

Your Carnivore Bumper is intended to enhance the utility and enjoyment of your Jeep vehicle. Before installation, please review the following safety information and installation recommendations. Throughout these instructions important safety information is generally preceded by one of the three signal words indicating the relative risk of injury, property damage or adverse consequence.

The signal words mean:

### **⚠ WARNING ⚠**

A HAZARDOUS SITUATION WHICH, IF NOT AVOIDED, COULD RESULT IN DEATH OR SERIOUS INJURY. YOU CAN BE KILLED OR SERIOUSLY HURT IF YOU DON'T FOLLOW INSTRUCTIONS.

### **⚠ CAUTION ⚠**

A HAZARDOUS SITUATION WHICH, IF NOT AVOIDED, COULD RESULT IN A MINOR OR MODERATE INJURY. YOU CAN BE MODERATELY HURT AND ALSO MAY SUFFER PROPERTY DAMAGE IF YOU DON'T FOLLOW INSTRUCTIONS.

### **NOTICE**

CAREFUL ATTENTION IS REQUIRED TO THIS INSTRUCTION OR OPERATION BUT GENERALLY DOES NOT RELATE TO PERSONAL INJURY. DAMAGE TO YOUR CARNIVORE PRODUCT OR OTHER PROPERTY MAY RESULT IF YOU DON'T FOLLOW INSTRUCTIONS.

## BEFORE YOU BEGIN USAGE:

Congratulations on your purchase of a Carnivore Bumper. Your top-quality bumper mounts directly to the frame of your vehicle. When unpacking, check to make sure all parts are included and not damaged due to shipping. If any part is missing or broken, please call Customer Service at 800-745-6037 as soon as possible. Thank you again for your purchase.

### **⚠ WARNING ⚠**

TO REDUCE RISK OF SERIOUS INJURY OR PROPERTY DAMAGE: READ ALL SAFETY MESSAGES AND UNDERSTAND ALL INSTRUCTIONS AND PROCEDURE NOTICES BEFORE ATTEMPTING TO INSTALL OR USE THIS PRODUCT.

### **⚠ CAUTION ⚠**

WELDED FRONT BUMPERS ARE HEAVY AND WE STRONGLY SUGGEST THE ASSISTANCE OF AN ABLE-BODIED ASSISTANT DURING LIFTING AND INSTALLATION OF YOUR BUMPER.

### **NOTICE**

A SEGMENT OF THE INSTALLATION HAS TO DO WITH ADAPTING THE ORIGINAL EQUIPMENT FOG LIGHTS AND WIRING TO THE NEW BUMPER.

THE PROCEDURE VARIES DEPENDING ON THE MODEL OR THE TRIM LEVEL OF YOUR JL CHASSIS WRANGLER (SPORT VS. SAHARA OR RUBICON).

### **⚠ CAUTION ⚠**

RISK OF EYE INJURY! SAFETY GLASSES MUST BE WORN AT ALL TIMES WHILE INSTALLING OR MAINTAINING THIS PRODUCT. DO NOT USE IF DAMAGED.

### **NOTICE**

AS YOU UNPACK YOUR FRONT BUMPER, BE CAREFUL NOT TO SCRATCH THE FINISH WITH A KNIFE OR RAZOR. WE SUGGEST PLACING THE UNPACKED BUMPER BACK INTO THE ORIGINAL BOX SO IT DOES NOT GET SCRATCHED BEFORE THE INSTALLATION BEGINS.

### **⚠ WARNING ⚠**

TO REDUCE RISK OF SERIOUS INJURY OR PROPERTY DAMAGE: READ ALL SAFETY MESSAGES AND UNDERSTAND ALL INSTRUCTIONS AND PROCEDURE NOTICES BEFORE ATTEMPTING TO INSTALL OR USE THIS PRODUCT.

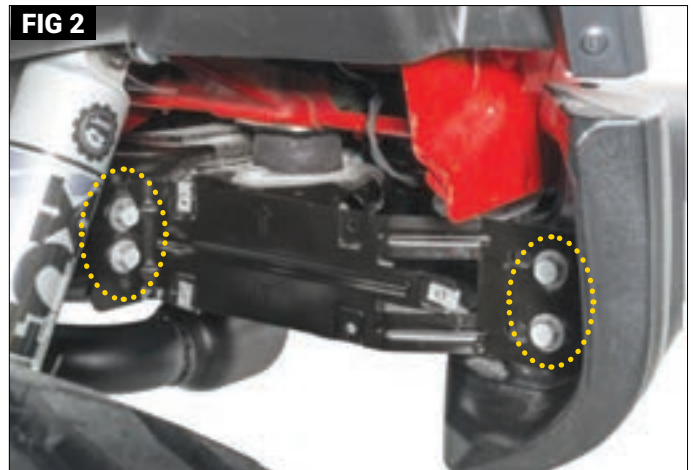
### **⚠ WARNING ⚠**

BUMPER NOT INTENDED FOR WINCHES IN EXCESS OF 10,000 LBS. LOAD LIMITS FOR YOUR BUMPER/WINCH MAY BE LESS DEPENDING ON CONDITION OF YOUR VEHICLE AND ATTACHMENTS. FOLLOW ALL INSTRUCTIONS, LIMITATIONS & WARNINGS WITH YOUR VEHICLE, THIS PRODUCT, YOUR WINCH AND SAFE WINCHING PRACTICES SUPPLEMENT.

### **NOTICE**

CHECK STATE AND LOCAL HIGHWAY SAFETY LAWS REGARDING PERMITTED BUMPER TYPES AND HEIGHTS.

## Step 1 - To Remove Original Bumper - JL



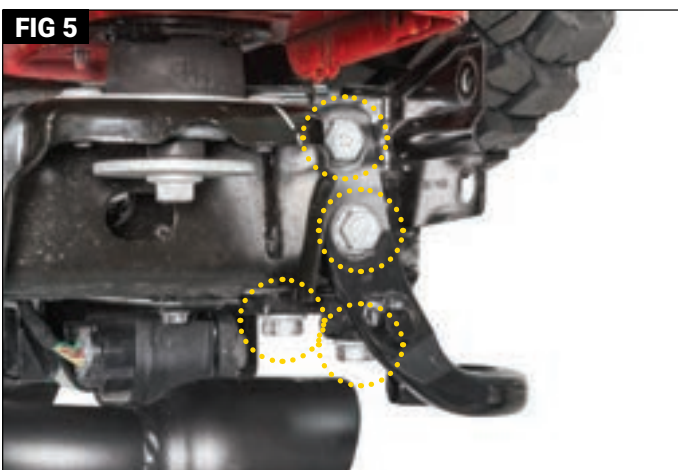
Put on safety glasses. Start by removing the factory splash guard. Remove the six screws holding on the inner shields, three on either side using a 8mm socket. (Fig 1) Remove the 4 bumper bolts, two on either side using a 16mm socket. (Fig 2)

## Step 2



Disconnect the rear bumper harness by sliding the gray locking tab backwards and depressing the black tab. (Fig 3) Remove the 4 bumper bolts, two on either side, using a 16mm socket. (Fig 4) Remove stock bumper and set aside.

## Step 3



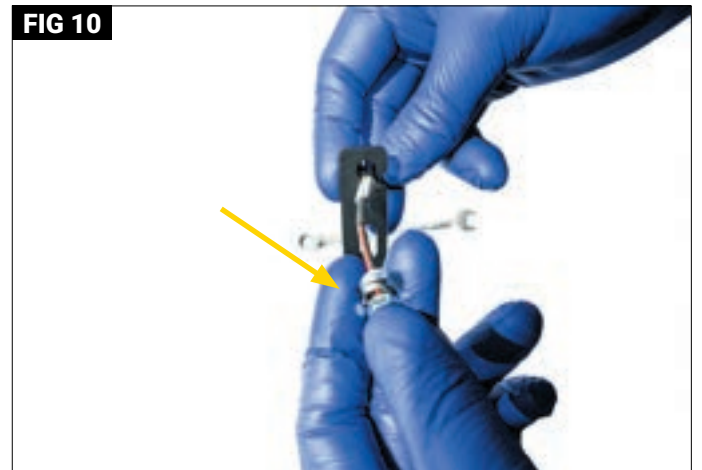
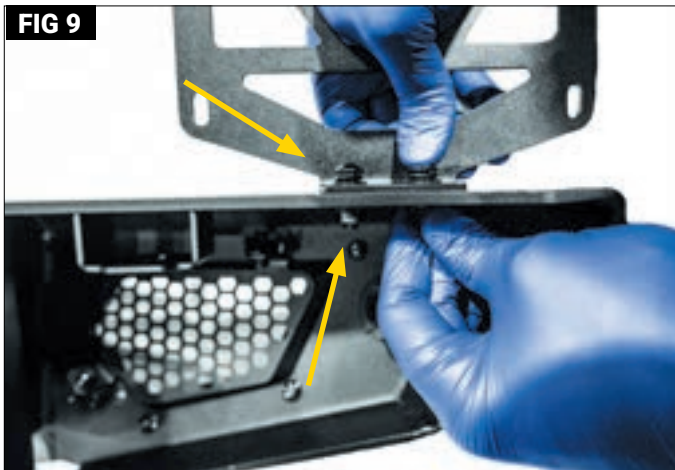
Remove the original tow hook if equipped using a 21mm socket. (Fig 5) Remove bumper bracket as well. There are four bolts total. Remove the passenger side bumper bracket using a 21mm socket. (Fig 6)

## Step 4 Rear Bumper Prep



Remove the bumper's harness by gently prying on all tie wrap fasteners and disconnecting the license plate light. (Fig 7) Bumper harness without backup sensors shown. (Fig 8)

## Step 5



Install the license plate mount to the bumper using two M8 buttonhead screws with M8 washers and M8 nuts. Tighten with 5mm hex key and 13mm socket (Fig 9) Attach the license plate wiring lights to the bracket and tighten with 10mm wrench. (Fig 10)



When using parking sensors, remove the sensors from the OEM rear bumper. Place the protective rubber ring around the center. (Fig 11) Install the sensors into new bumper. (Fig 12)

**Step 6**

**FIG 13**

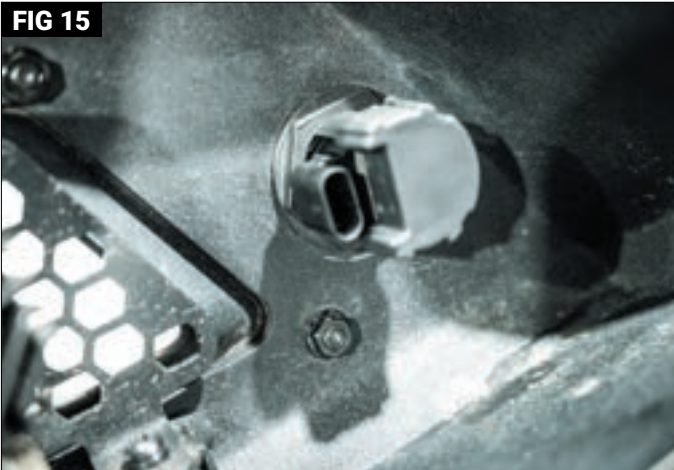


**FIG 14**



When using parking sensors, apply the foam rubber spacer onto the plastic sensor protective security cap. (Fig 13)  
Place the cap over the sensor. (Fig 14)

**FIG 15**



**FIG 16**



The protective security cap will snap into place with a simple push. (Fig 15) For vehicles that are not equipped with parking sensors, snap the plastic protective covers into the parking sensor holes. (Fig 16)

Plastic Sensor Security Cap



K.

Foam Rubber Spacer



L.

Parking Sensor (Not Supplied)



I.



Protective Rubber Ring

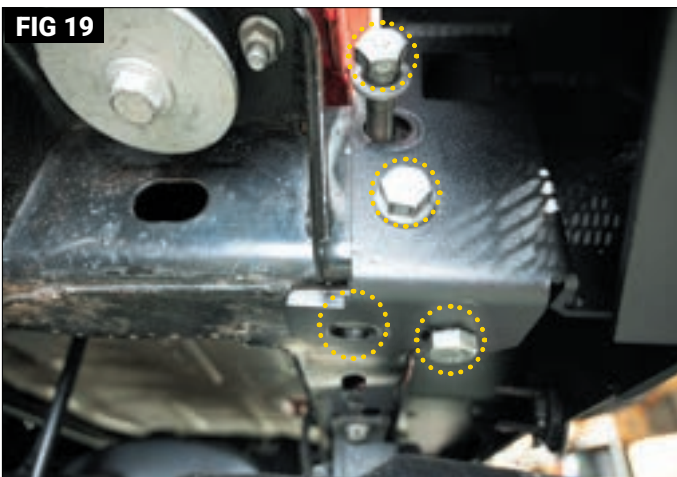


Bumper Parking Sensor Bracket and Nut  
(Removed for Illustrated Purposes)

## Step 7 Rear Bumper Assembly



On the passenger side insert the supplied M14 nut plate into the frame rail. (Fig 17) Align the threaded holes in the nut plate with the holes in the frame on the bottom. (Fig 18)



With the assistance of another person, and with the tailgate partially open, lift the bumper and gently rest it on the frame rails. Attach the bumper to the frame. (Fig 19) Install the passenger side using the supplied bolts with a 21mm socket. (Fig 20) Snug the bolts first. Align the bumper, then tighten the factory side mounting bolts on both sides. Torque all mounting hardware to 105ft-lbs. Plug in the license plate light. Installation is now complete.



**NOTE:** Fasten the license plate using the four M6 buttonhead screws and M6 nuts. Tighten with 4mm hex key and 10mm wrench. (Fig 21)

# Carnivore Exclusive Three Year Limited Warranty

Your Carnivore branded accessories are covered by the following Limited Warranty provided exclusively by Carnivore, 1028 Saunders Lane, West Chester PA 19380.

This **Limited Warranty** is the only warranty made in connection with your purchase. Carnivore neither assumes nor authorizes any vendor, retailer or other person or entity to assume for it any other obligation or liability in connection with this product or Limited Warranty. This Limited Warranty does not apply and is not cumulative to any accessory or part distributed by Carnivore for which the Manufacturer provides a separate written warranty.

## **What is Covered:**

Subject to the terms, exclusions and limitations herein and with respect only to Carnivore branded accessories first sold in the United States, Carnivore warrants to the initial retail purchaser only that your Carnivore accessory shall be free of defects in material and workmanship: for a period of three (3) years from date of retail purchase.

This **Limited Warranty** is not assignable and shall terminate upon sale of the vehicle upon which the Carnivore accessory is installed or other transfer to third persons.

All other warranties are hereby disclaimed, except to the extent prohibited by applicable law in which case any implied warranty of merchantability or fitness for a particular purpose on this product is limited to 3 years from date of initial retail sale. Carnivore reserves the rights to: **(a.) require invoice or other proof your accessory is within the terms of this Limited Warranty as a condition of warranty service and, (b.) make future revisions to this product and Limited Warranty without prior notice or obligation to upgrade your product.**

## **What is Not Covered:**

Your Carnivore Limited Warranty does not cover products or parts Carnivore determines to have been damaged by or subjected to: **(a.) installation damage, alteration, modification, combination with other parts, failure to maintain or improper repair or service, (b.) normal wear & tear, cosmetic damage or damage from moisture or water immersion, (c.) Acts of God, accidents, misuse, negligence, inadequate mounting or impact with vehicle(s), obstacles or other aspects of the environment, (d.) theft, vandalism or other intentional damage.**

## **Remedy Limited to Repair/Replacement:**

The exclusive remedy provided hereunder shall, upon Carnivore's inspection and at option, be either repair or replacement of product or parts (new or refurbished) covered under this Limited Warranty. Customers requesting warranty consideration should first contact Carnivore to obtain a RGA number (610-701-3336). All labor, removal, shipping and installation costs are customer's responsibility.

## **Other Limitations - Exclusion of Damages - Your Rights Under State Law:**

In consideration of the purchase price paid, neither Carnivore nor any independent Carnivore distributor/licensee are responsible for any time loss, rental costs, or for any incidental, consequential, punitive or other damages you may have or incur in connection with any part or product purchased. Your exclusive remedy hereunder for covered parts is repair/replacement as described above.

This **Limited Warranty** gives you specific rights. You may also have other rights that vary from state to state. For example, some states do not allow limitations of how long an implied warranty lasts and /or do not allow the exclusion or limitation of incidental or consequential damages, so the limitations and exclusions herein may not apply to you.

Carnivore ©2022. All Rights Reserved.  
A4 Version 4/20/2022

**Instructions Part #12999.3242**

