



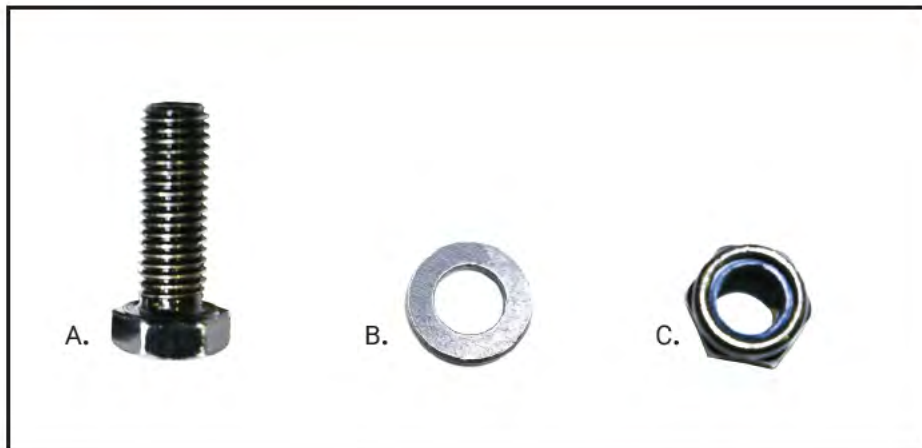
# Rear Bumper

Installation Manual:  
for Jeep Wrangler YJ/TJ '87 - '06  
#12056-2001



Rear Bumper

## PARTS AND TOOLS REQUIRED



### REQUIRED TOOLS:

Safety Glasses  
T30 Torx Wrench  
16mm Socket (TJ)  
19mm Socket (YJ)  
18MM Wrench  
Power Drill  
3/16" & 7/16" Drill Bits  
Drill Stop  
Pencil  
Ratchet

### KIT CONTENT LIST:

A. M10 Hex Head Bolt (x8)  
B. M10 Flat Washer (x8)  
C. M10 Nylock Nut (x8)



## A FEW WORDS ABOUT PRODUCT SAFETY:

Your Carnivore Bumper is intended to enhance the utility and enjoyment of your Jeep vehicle. Before installation, please review the following safety information and installation recommendations. Throughout these instructions important safety information is generally preceded by one of the three signal words indicating the relative risk of injury, property damage or adverse consequence.

The signal words mean:

### **⚠ WARNING ⚠**

A HAZARDOUS SITUATION WHICH, IF NOT AVOIDED, COULD RESULT IN DEATH OR SERIOUS INJURY. YOU CAN BE KILLED OR SERIOUSLY HURT IF YOU DON'T FOLLOW INSTRUCTIONS.

### **⚠ CAUTION ⚠**

A HAZARDOUS SITUATION WHICH, IF NOT AVOIDED, COULD RESULT IN A MINOR OR MODERATE INJURY. YOU CAN BE MODERATELY HURT AND ALSO MAY SUFFER PROPERTY DAMAGE IF YOU DON'T FOLLOW INSTRUCTIONS.

### **NOTICE**

CAREFUL ATTENTION IS REQUIRED TO THIS INSTRUCTION OR OPERATION BUT GENERALLY DOES NOT RELATE TO PERSONAL INJURY. DAMAGE TO YOUR CARNIVORE PRODUCT OR OTHER PROPERTY MAY RESULT IF YOU DON'T FOLLOW INSTRUCTIONS.

## BEFORE YOU BEGIN USAGE:

Congratulations on your purchase of a Carnivore Bumper. Your top-quality bumper mounts directly to the frame of your vehicle. When unpacking, check to make sure all parts are included and not damaged due to shipping. If any part is missing or broken, please call Customer Service at 800-745-6037 as soon as possible. Thank you again for your purchase.

### **⚠ WARNING ⚠**

TO REDUCE RISK OF SERIOUS INJURY OR PROPERTY DAMAGE: READ ALL SAFETY MESSAGES AND UNDERSTAND ALL INSTRUCTIONS AND PROCEDURE NOTICES BEFORE ATTEMPTING TO INSTALL OR USE THIS PRODUCT.

### **⚠ CAUTION ⚠**

WELDED REAR BUMPERS ARE HEAVY AND WE STRONGLY SUGGEST THE ASSISTANCE OF AN ABLE-BODIED ASSISTANT DURING LIFTING AND INSTALLATION OF YOUR BUMPER.

### **NOTICE**

A SEGMENT OF THE INSTALLATION HAS TO DO WITH ADAPTING THE ORIGINAL EQUIPMENT FOG LIGHTS AND WIRING TO THE NEW BUMPER.

### **⚠ CAUTION ⚠**

RISK OF EYE INJURY! SAFETY GLASSES MUST BE WORN AT ALL TIMES WHILE INSTALLING OR MAINTAINING THIS PRODUCT. DO NOT USE IF DAMAGED.

### **NOTICE**

AS YOU UNPACK YOUR BUMPER, BE CAREFUL NOT TO SCRATCH THE FINISH WITH A KNIFE OR RAZOR. WE SUGGEST PLACING THE UNPACKED BUMPER BACK INTO THE ORIGINAL BOX SO IT DOES NOT GET SCRATCHED BEFORE THE INSTALLATION BEGINS.

### **⚠ WARNING ⚠**

TO REDUCE RISK OF SERIOUS INJURY OR PROPERTY DAMAGE: READ ALL SAFETY MESSAGES AND UNDERSTAND ALL INSTRUCTIONS AND PROCEDURE NOTICES BEFORE ATTEMPTING TO INSTALL OR USE THIS PRODUCT.

### **NOTICE**

CHECK STATE AND LOCAL HIGHWAY SAFETY LAWS REGARDING PERMITTED BUMPER TYPES AND HEIGHTS.



### **⚠ WARNING ⚠**

THIS CARNIVORE REAR BUMPER IS NOT RATED OR INTENDED FOR TOWING PURPOSES. DO NOT USE AS A RECOVERY POINT.

## STEP 1- BUMPER REMOVAL - TJ



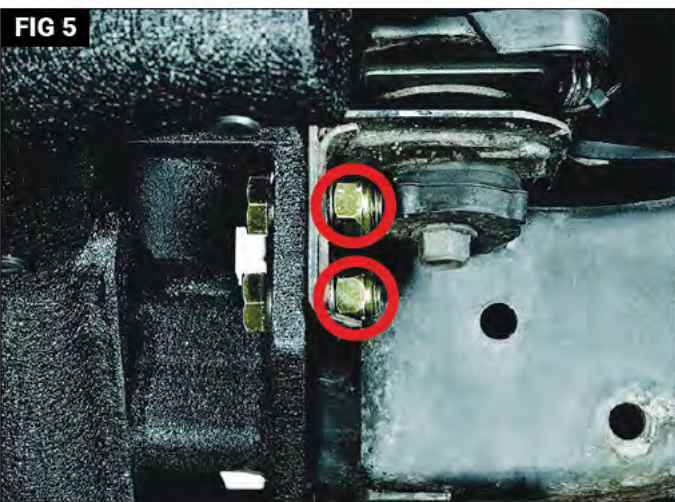
Put on safety glasses. Remove the plastic end caps using a T30 Torx Wrench. Repeat the step for the other side. (FIG 1) Locate the four bolts attaching the bumper on each side. (FIG 2)

## STEP 2



Remove the rear body mount bolt using a 16mm socket. Repeat the step for the other side. (FIG 3) Remove the three bolts using a 16mm socket. (FIG 4) Repeat the step for the other side. Remove the factory bumper.

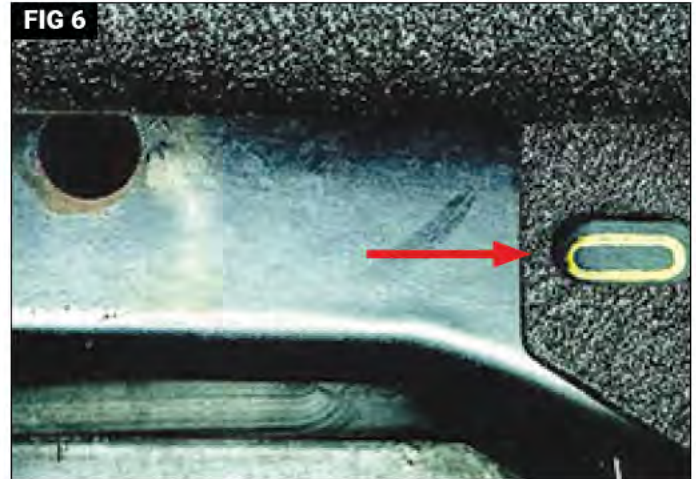
## STEP 3



With the assistance of another person, lift the new rear bumper into position. The outside pre-drilled holes in your bumper will line up with the outside mounting bracket holes on your Wrangler. Using four supplied M10 hex head bolts, M10 flat washers and M10 nylock nuts, tighten four bolts with a 16mm socket. (FIG 5)

## STEP 4

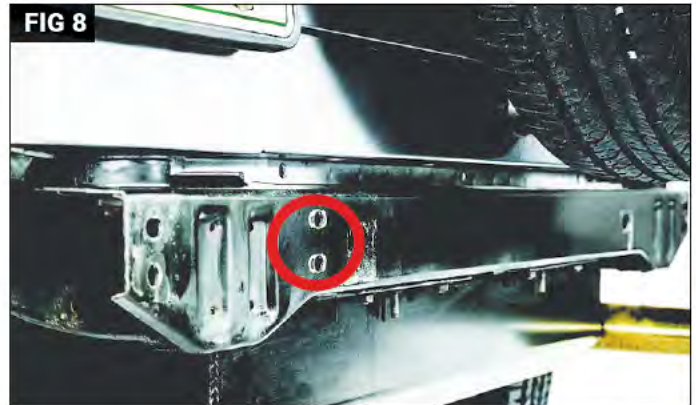
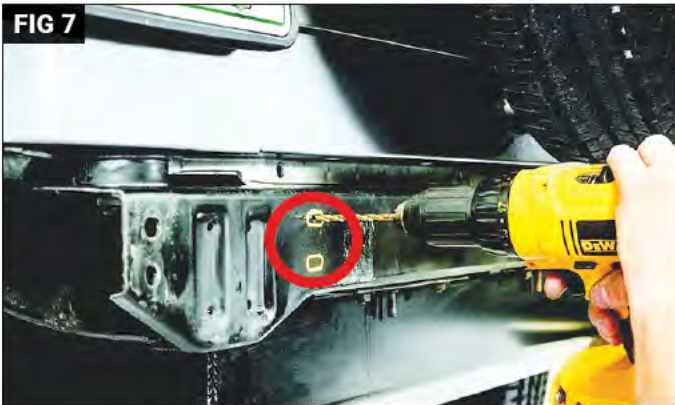
With the outside holes of the bumper centered on the holes, mark the center of the inside holes of the bumper mounting bracket making sure the mounting bracket/ bumper is level (FIG 6). Repeat the step for both sides. Remove the bumper.



## STEP 5

### **⚠ WARNING ⚠**

USE EXTREME CARE WHEN DRILLING INTO THE REAR FRAME OF YOUR VEHICLE. THE GAS TANK IS DIRECTLY BEHIND THE CROSS MEMBER AND CAN BE PUNCTURED IF DRILLING IS TOO DEEP. THERE IS A POTENTIAL FIRE AND SAFETY HAZARD IF THE FUEL TANK IS PUNCTURED.



Remove the bumper from the vehicle by taking out the four bolts previously installed to position the bumper on the frame. Using a  $\frac{3}{16}$ " drill bit, drill a pilot hole in the two marked areas/hole locations being EXTREMELY careful not to drill too deep as the fuel tank is directly behind the bumper (FIG 7) Replace the  $\frac{3}{16}$ " drill bit with the  $\frac{7}{16}$ " drill bit and drill out the pilot holes using EXTREME care not to drill too deep. We recommend use of a drill stop. Repeat the step for the other side. (FIG 8)

## STEP 6 - BUMPER INSTALLATION - TJ



With the four  $\frac{7}{16}$ " holes drilled, the bumper should be centered on the inside and outside holes. With the help of another person, re-attach the rear bumper to the rear frame upper eight bolt locations using the supplied M10 hex head bolts, M10 flat washers and M10 nylock nuts, tighten all eight bolts with a 19mm socket. (FIG 9) Installation is now complete.

## STEP 1- BUMPER REMOVAL - YJ



Put on safety glasses. Locate and remove the four bolts and nuts holding each bumperette to your Jeep's frame using a 16mm socket for the factory bolts and an 18mm wrench for the nuts. (FIG 1) Insert the 18mm wrench into the rail for easier removal. (FIG 2)

## STEP 2 - BUMPER INSTALLATION - YJ



With the assistance of another person, place the new Carnivore bumper into place. Using the supplied M10 hex head bolts, M10 flat washers and M10 nylock nuts, tighten all eight bolts with a 19mm socket. (FIG 5) Installation is now complete.

**COMPLETE**



# Carnivore Exclusive Three Year Limited Warranty

Your Carnivore branded accessories are covered by the following Limited Warranty provided exclusively by Carnivore, 1028 Saunders Lane, West Chester PA 19380.

This **Limited Warranty** is the only warranty made in connection with your purchase. Carnivore neither assumes nor authorizes any vendor, retailer or other person or entity to assume for it any other obligation or liability in connection with this product or Limited Warranty. This Limited Warranty does not apply and is not cumulative to any accessory or part distributed by Carnivore for which the Manufacturer provides a separate written warranty.

## **What is Covered:**

Subject to the terms, exclusions and limitations herein and with respect only to Carnivore branded accessories first sold in the United States, Carnivore warrants to the initial retail purchaser only that your Carnivore accessory shall be free of defects in material and workmanship: for a period of three (3) years from date of retail purchase.

This **Limited Warranty** is not assignable and shall terminate upon sale of the vehicle upon which the Carnivore accessory is installed or other transfer to third persons.

All other warranties are hereby disclaimed, except to the extent prohibited by applicable law in which case any implied warranty of merchantability or fitness for a particular purpose on this product is limited to three (3) years from date of initial retail sale. Carnivore reserves the rights to: **(a.) require invoice or other proof your accessory is within the terms of this Limited Warranty as a condition of warranty service and, (b.) make future revisions to this product and Limited Warranty without prior notice or obligation to upgrade your product.**

## **What is Not Covered:**

Your Carnivore Limited Warranty does not cover products or parts Carnivore determines to have been damaged by or subjected to: **(a.) installation damage, towing, alteration, modification, combination with other parts, failure to maintain or improper repair or service, (b.) normal wear & tear, cosmetic damage or damage from moisture or water immersion, (c.) Acts of God, accidents, misuse, negligence, inadequate mounting or impact with vehicle(s), obstacles or other aspects of the environment, (d.) theft, vandalism or other intentional damage.**

## **Remedy Limited to Repair/Replacement:**

The exclusive remedy provided hereunder shall, upon Carnivore inspection and at our option, be either repair or replacement of product or parts (new or refurbished) covered under this Limited Warranty. Customers requesting warranty consideration should first contact Carnivore to obtain a RGA number (610-701-3336). All labor, removal, shipping and installation costs are customer's responsibility.

## **Other Limitations - Exclusion of Damages - Your Rights Under State Law:**

In consideration of the purchase price paid, neither Carnivore nor any independent Carnivore distributor/licensee are responsible for any time loss, rental costs, or for any incidental, consequential, punitive or other damages you may have or incur in connection with any part or product purchased. Your exclusive remedy hereunder for covered parts is repair/replacement as described above.

This **Limited Warranty** gives you specific rights. You may also have other rights that vary from state to state. For example, some states do not allow limitations of how long an implied warranty lasts and /or do not allow the exclusion or limitation of incidental or consequential damages, so the limitations and exclusions herein may not apply to you.

Carnivore. 2022. All Rights Reserved.  
A4 Version 9/8/22

**Instructions Part #12999.3288**

