

JEEP RENEGADE

Renegade Lift KJ09168BK

Fits all Renegade models. Install time 4-5+ hours plus 4 wheel alignment.

Maximum tire size is 30" on stock wheel, or stock wheel offset.

235/75/16 = 29.9" ~ 235/70/17 = 30" ~ 235/65/18 = 30"

235/70/16 = 29" ~ 235/65/17 = 29" ~ 235/60/18 = 29.1"

1/2" (13mm) additional back space likely required to clear strut spring perch.

Original tire sizes and wheel offsets:

215/65R16 – 6.5" x 16" – 40mm positive offset – Sport, Latitude

215/60R17 – 7" x 17" – 40mm positive offset – Latitude

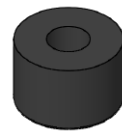
215/65R17 – 7" x 17" – 40mm positive offset – Trailhawk

225/55R18 – 7" x 18" – 40mm positive offset – Latitude, Limited, 75th Anniv

M21711 (qty 4) bushings are used on 2wd models only
in conjunction with M21642 Rear Cross Member Spacers.



M21639 carrier bearing spacers (qty 2)
and S10522 (qty 2) carrier bearing 10mm bolts
are used on 4wd models only.



Truck and Jeep Accessories

Rear Wheel Alignment

To align the rear of the Renegade, ALL rear lower control arm mounting bolts must be loosened, not just the ones at the adjustable cams.



LIFT & TIRE SPECS