



EVO Manufacturing
EVO-3035 JLU Rocker Steps

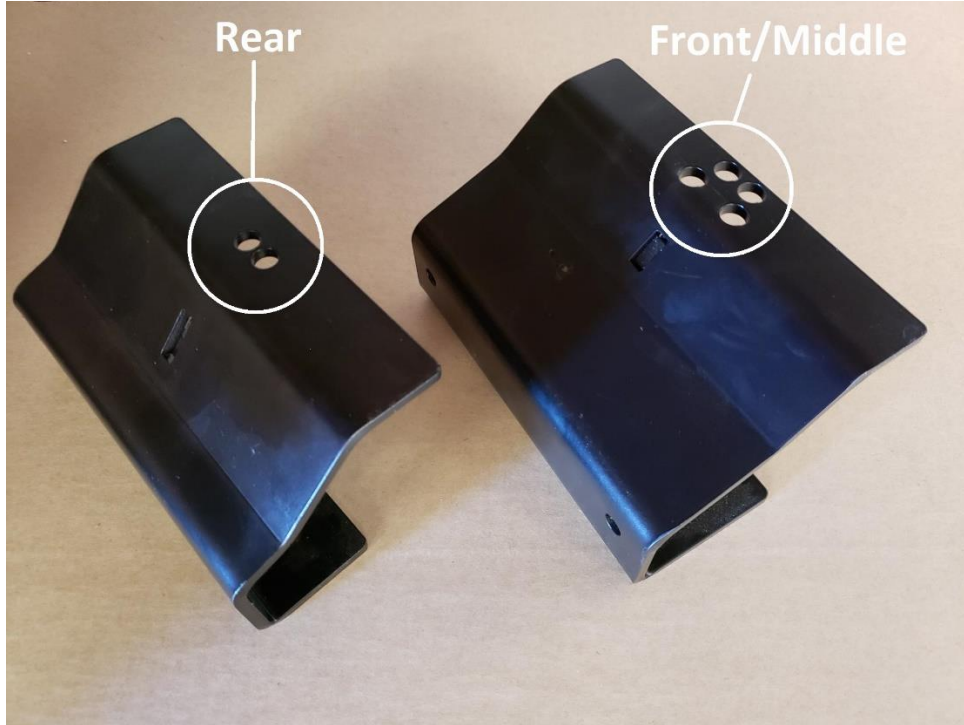
READ BEFORE INSTALLATION:



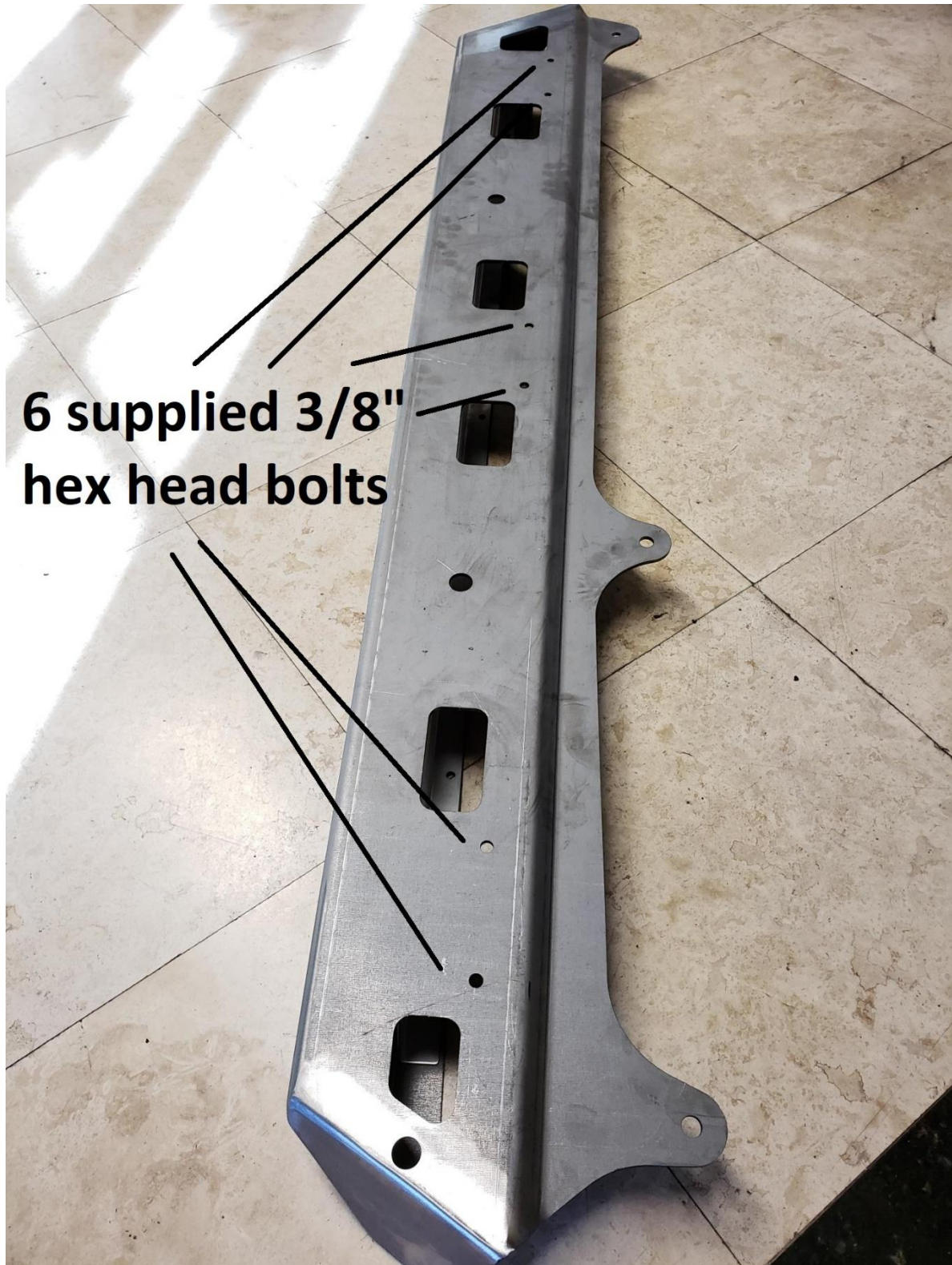
1. Safely park vehicle on level ground.
2. Start by preassembling both driver and passenger side rocker steps off the vehicle. Insert step plate into main rail. From the outside in, loosely install the supplied 5 ¼" button head bolts with nuts.



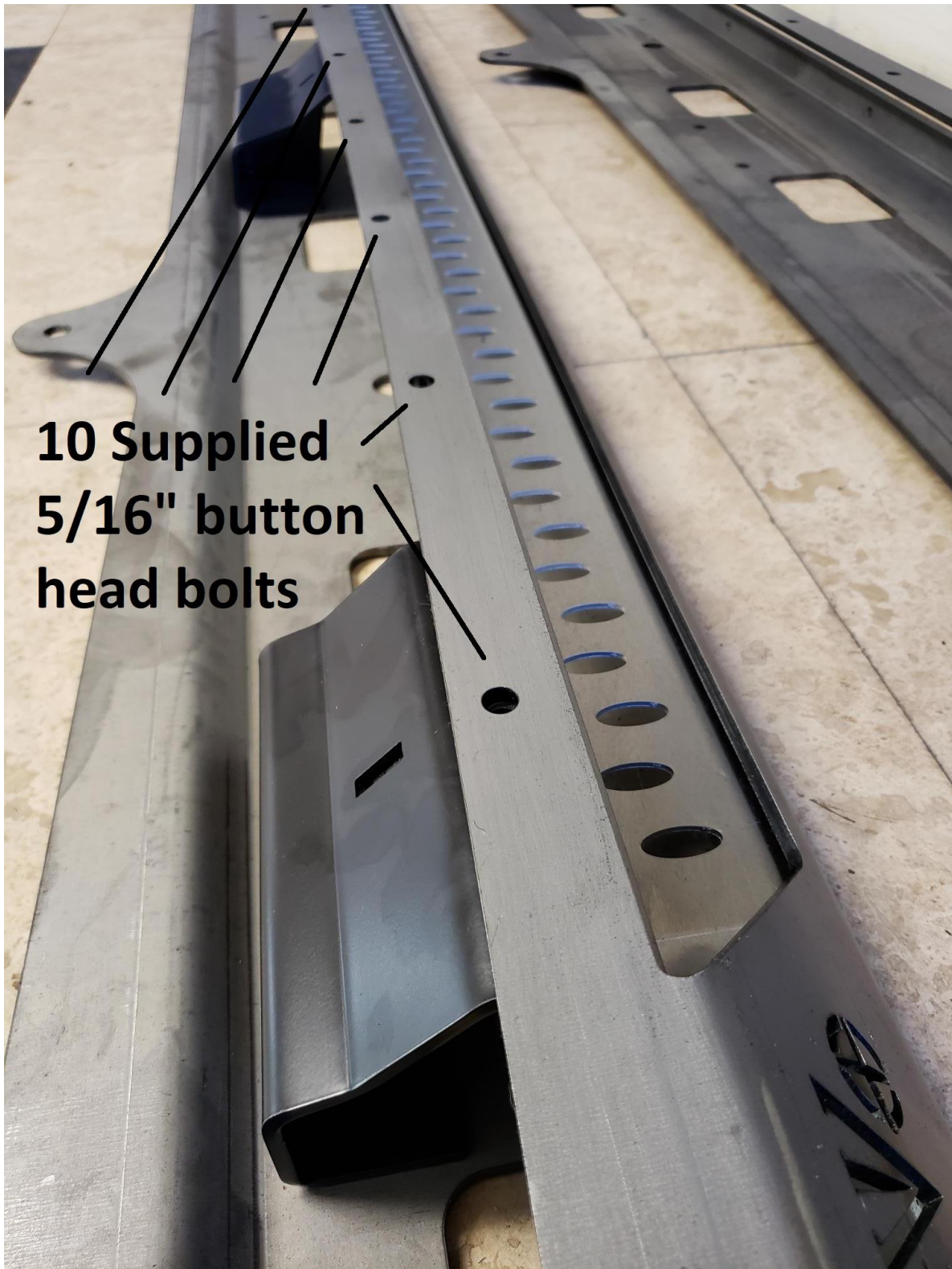
3. Loosely preassemble the inner seam mount brackets to main rocker rails. The inner seam mount brackets with the **4-bolthole pattern on top** will be used at **both the front and middle locations** on each side rail. The inner seam mount with the **2-bolthole pattern on top** will be used at **the rear location only**.



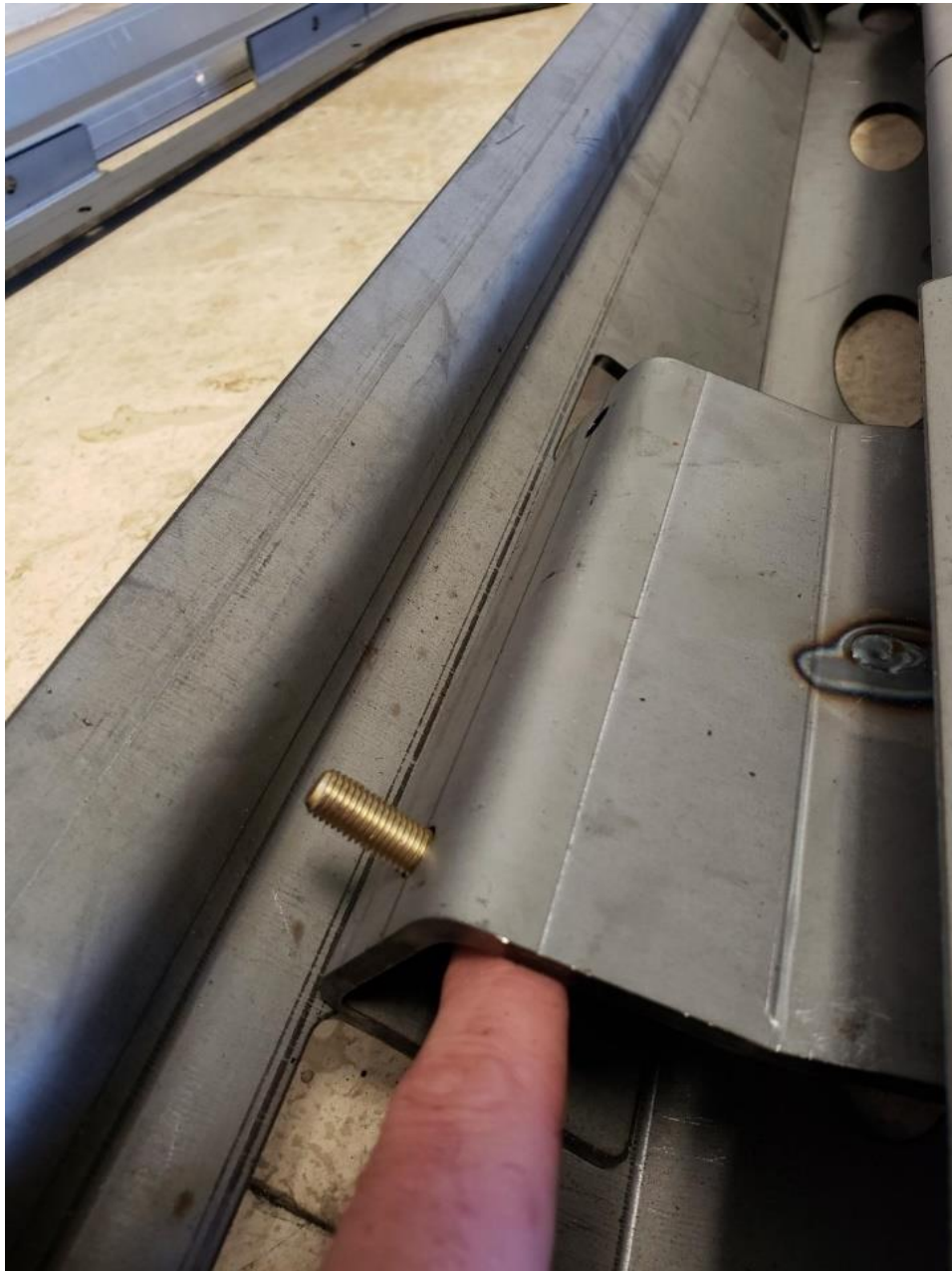
- Using the supplied 3/8" hex head hardware, loosely install all 6 bolts from bottom up at all 3 inner seam mount locations (2 bolts each mount). It is best to tighten these to the point just before getting tight, loose but almost tight. This will save time later when tightening to vehicle.



5. From the top down install all 10 5/16" button head screws. **Keep the 3 5/16" button head bolts at the inner seam mount brackets loose, just before tight. The other 7 can be tightened at this time.**



6. Tighten the 5 ¼" button head bolts from step 2
7. Repeat preassembly on other Rocker Step.
8. Remove factory steps/Rubicon Rails on both driver and pass side. There are 6 pinch seam nuts and 3 body bolts on each side.
9. Starting on driver side. Remove the 3 body mount bolts. Retain the middle and rear factory body mount bolts.
10. Using supplied 5/16" hex head bolts with washers. Install through inner seam mount bracket at most forward and most rearward locations (on bolt at the front of rocker step and bolt at the rear of rocker step. With 2 people, lift Bomber into location and insert front and rear bolts into existing pinch seam holes at vehicles body seam. Loosely install nut at each of these locations on top the 5/16 hex head bolts. This will loosely hold part to vehicle.



11. Using supplied 5/16" hardware, loosely install the remaining 4 5/16" hex bolts, washer and nuts at the inner seam mount bracket locations.
12. Insert the supplied crush tube at the front body mount. Between the Bomber Rocker and the body mount. Loosely (just before tightening) install the supplied M12 bolt with washer at this front body mount.
13. Reinstall the middle and rear body mount bolts, just before tight.



14. Using a jack, apply an upward and inward pressure to the Rocker Step, lifting it up to an approximate level/as installed location.
15. Tighten all 3 body mount bolts.
16. Tighten the 3 upper 5/16" button head bolts and the 6 lower 3/8" hex head bolts at the inner seam mounts.
17. Tighten the 6 5/16" hex head bolts at inner seam mount brackets at body pinch seam.
18. Repeat on opposite side.

Size	Recommended Torque											
	Grade 2		Grade 5		Grade 8		18-8 S/S		Bronze		Brass	
	Coarse	Fine	Coarse	Fine	Coarse	Fine	Coarse	Fine	Coarse	Fine	Coarse	Fine
#4*	-	-	-	-	-	-	5.2	-	4.8	-	4.3	-
#6*	-	-	-	-	-	-	9.6	-	8.9	-	7.9	-
#8*	-	-	-	-	-	-	19.8	-	18.4	-	16.2	-
#10*	-	-	-	-	-	-	22.8	31.7	21.2	29.3	18.6	25.9
1/4	4	4.7	6.3	7.3	9	10	6.3	7.8	5.7	7.3	5.1	6.4
5/16	8	9	13	14	18	20	11	11.8	10.3	10.9	8.9	9.7
3/8	15	17	23	26	33	37	20	22	18	20	16	18
7/16	24	27	37	41	52	58	31	33	29	31	26	27
1/2	37	41	57	64	80	90	43	45	40	42	35	37
9/16	53	59	82	91	115	129	57	63	53	58	47	51
5/8	73	83	112	128	159	180	93	104	86	96	76	85
3/4	125	138	200	223	282	315	128	124	104	102	118	115
7/8	129	144	322	355	454	501	194	193	178	178	159	158
1+	188	210	483	541	682	764	287	289	265	240	235	212