



Made in the USA

JL Front Bumper

FB-F-100/101/102/103-JL

FB-S-100/101/102/103-JL

INSTALLATION MANUAL



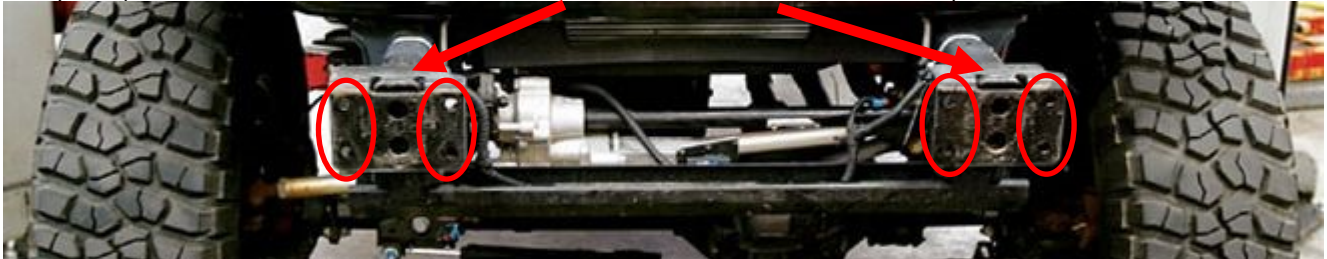
Tools Required	
5/8 socket	9/16" socket
18 mm socket	11/16 wrench

PRIOR TO INSTALLING YOUR NEW ROCK SLIDE ENGINEERING BUMPER,
 REMOVE THE FACTORY BUMPER AND SAVE THE HARDWARE
 YOU WILL REUSE SOME OF THE FACTORY HARDWARE

Step 1

Mount the new bumper to the frame using the following instructions:

With the factory bumper removed, locate the two frame mounts. Each frame mount will have 4 open holes.

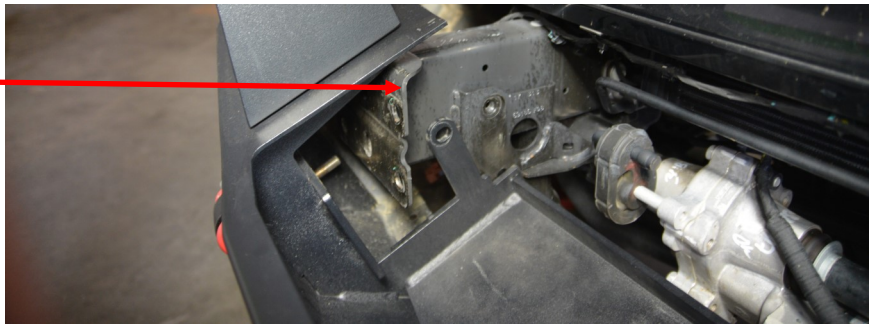


Step 2

Line up the bumper with your frame mounts.

Tilt your bumper so the back winch plate brackets slide behind the front mounting locations.

Slide the bumper up and onto the frame.

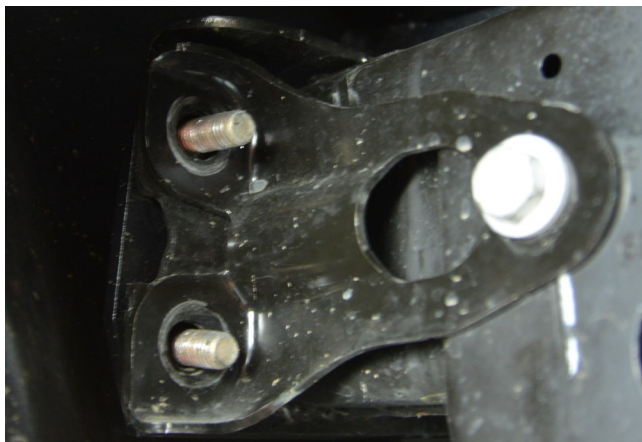


Step 3

Line up the bolts on the rear of the bumper with the frame mounts.

Slide the bumper bolts through the mounts and reuse a factory nut on the backside to hold the bumper in place on the 4 bolts that you slid through the frame mounting brackets.

Tighten down halfway

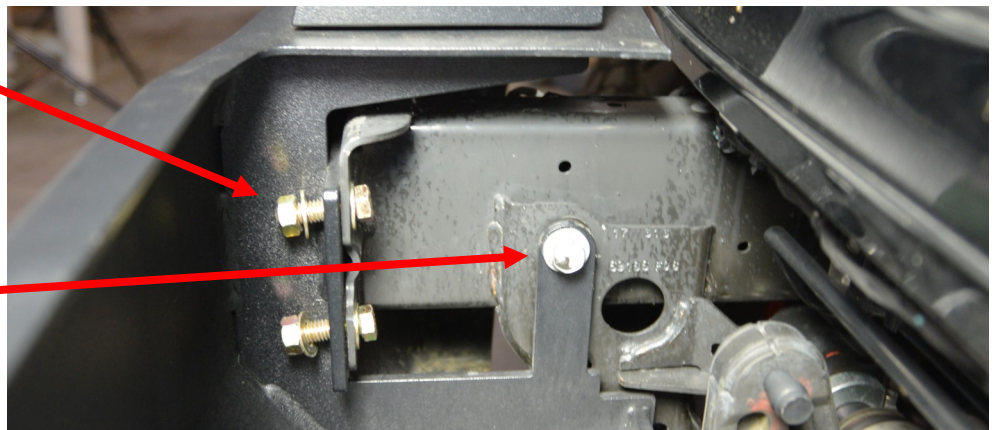


Step 4

Install 2 bolts with washers and a nut loosely into the frame mounts with the bolt facing forward on the passenger and driver side of the bumper.

Reinstall loosely the factory bolt you removed into the winch plate bracket.

**If this bolt was not removed, simply remove it and reinstall it into place

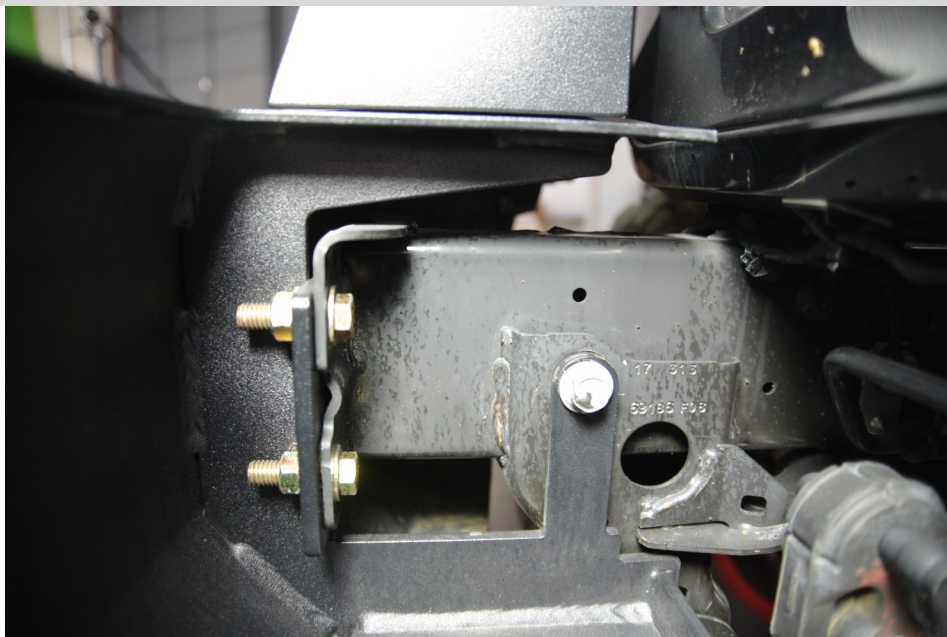


Step 4

Tighten down all hardware starting with the new grade 8 zinc plated hardware.

Tighten down the factory nuts that were replaced in step 3

Lastly, tighten down the winch plate bolt.



Step 5 ** Winch install ** OPTIONAL

Install winch into bumper using the supplied winch hardware. Mount the winch to the bumper using the underside 4 holes.

****Note:** Some winches can be installed after the bumper has been installed. If this is a concern, set the winch in the bumper prior to install and install the winch after the bumper has been completely installed.

PRODUCT INFORMATION:

LIMITED LIFETIME WARRANTY FOR STRUCTURAL AND MECHANICAL COMPONENTS

LIMITED TWELVE (12) MONTH WARRANTY FOR FINISH AND ELECTRICAL COMPONENTS

Rock-Slide Engineering, LLC (“R-SE”) warrants to the original purchaser that (a) the structural and mechanical components of the Step Sliders will be free of defects in material and workmanship for the lifetime of the Step Sliders (the “product”), and (b) the finish (powder coat) and the electrical components (including the motor) will be free of defects in material and workmanship for a period of twelve (12) months from the original date of purchase. This warranty applies only to the original retail purchaser. Warranty is void if product was not purchased directly from R- SE or from an authorized R-SE retailer or reseller. This warranty applies only with regard to the original installation of the product to the original vehicle. This warranty does not cover removal or reinstallation of the product.

To exercise this warranty and receive any warranty service, the original purchaser must provide R-SE with proof of purchase and date of purchase that is acceptable to R-SE, such as a copy of the original purchaser’s purchase receipt. The original purchaser must return the defective product to R-SE along with a description of the problem, a copy of the original purchase receipt, the original bill of sale and all contact information (name, address, telephone number and email address). To begin the warranty process, the original purchaser must email R-SE’s warranty department.

During this warranty term, and upon the original purchaser’s valid exercise of this warranty, R-SE shall, at its option, repair or furnish a replacement product in the event the original product is deemed by R-SE to be defective. R-SE’s sole liability shall be for repairing or replacing the product, but R-SE may refund the purchase price at its sole discretion and option. The original purchaser is responsible for prepayment of all shipping and/or transportation charges with respect to the exercise of this warranty. The product may change without notice. In the event of a product change, R-SE has no obligation to upgrade or modify any older generation product.

THE WARRANTY SET FORTH HEREIN IS THE ONLY WARRANTY COVERING THE PRODUCT. NO OTHER WARRANTY EXISTS, EXPRESS OR IMPLIED, INCLUDING, WITHOUT LIMITATION, IMPLIED WARRANTIES OF MERCHANTABILITY AND/OR FITNESS FOR A PARTICULAR PURPOSE. No retailer, reseller, dealer, agent or employee is authorized to make any modifications, extensions, amendments or additions to this warranty.

This warranty shall be void in its entirety if R-SE determines that the product installation was modified, changed, altered, customized or in any way used other than as instructed. Installation of the product without strictly adhering to the installation instructions shall void this warranty. Installation must be on the proper vehicle or warranty is void.

R-SE SHALL NOT BE LIABLE FOR SPECIAL, INDIRECT, INCIDENTAL OR CONSEQUENTIAL DAMAGES, UNDER ANY LEGAL THEORY AND/OR UNDER ANY CIRCUMSTANCE WHATSOEVER. IN ANY EVENT, ANY DAMAGES IN ANY SITUATION SHALL BE LIQUIDATED DAMAGES AND MAY NOT EXCEED THE RETAIL PRICE OF THE PRODUCT. R-SE SHALL NOT BE LIABLE FOR ANY LOSS, DAMAGE OR INJURY DIRECTLY OR INDIRECTLY ARISING FROM THE USE OF OR INABILITY TO DETERMINE THE USE OF THE PRODUCT. THE ORIGINAL PURCHASER IS RESPONSIBLE TO DETERMINE THE SUITABILITY OF THE PRODUCT FOR ITS INTENDED USE, PRIOR TO USING THE PRODUCT, AND THE ORIGINAL PURCHASER ASSUMES ALL RESPONSIBILITY AND RISK IN CONNECTION THEREWITH.

PATENT INFORMATION:

This product is covered by multiple US issued patents.

PAT US 9,771,024 B2

PAT US 8,833,781B2

PAT US D718,1955



Tech Support / General Questions

435-752-4580

8 A.M.—5 P.M. MST