



# INSTALLATION INSTRUCTIONS

**PART No.**

**FB22179**

**Jeep® JL Wrangler  
Rear Bumper Delete**



### REQUIRED TOOLS

18mm Socket  
21mm Socket  
Ratchet

### KIT CONTAINS

Rear Bumper Delete  
Nut Plate  
3/4" D-Ring  
M12 Flat Washer  
M12 Lock Washer  
M12 – 1.75 x 45mm Hex Bolt

### QTY

1  
1  
2  
2  
2  
2

2217900

## Jeep® JL Wrangler Rear Bumper Delete

### 1) REMOVAL

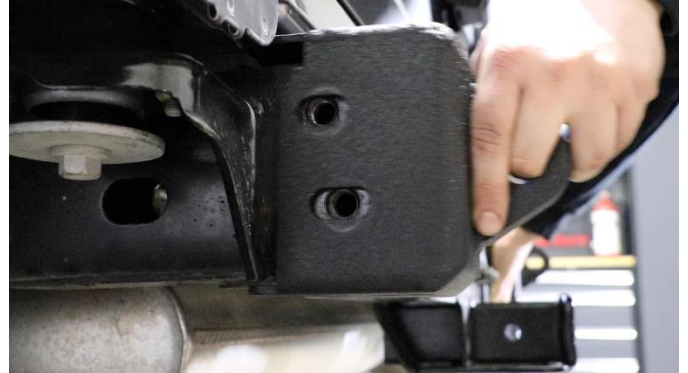
Remove your existing rear bumper. We have a video to assist if needed, linked below.

JL Stock Rear Bumper Removal: A Step-By-Step Guide:

<https://www.youtube.com/watch?v=6veBI3rXBSw>



Place your rear bumper delete onto the frame, so the left and right bolt holes and slots line up.



Loosely reinstall the factory bolts into their previous location, 4 21mm bolts on the driver side, and 2 18mm bolts on the passenger side. Also, loosely install the 2 provided bolts on the bottom of the frame rail on the passenger side into the nut plate.



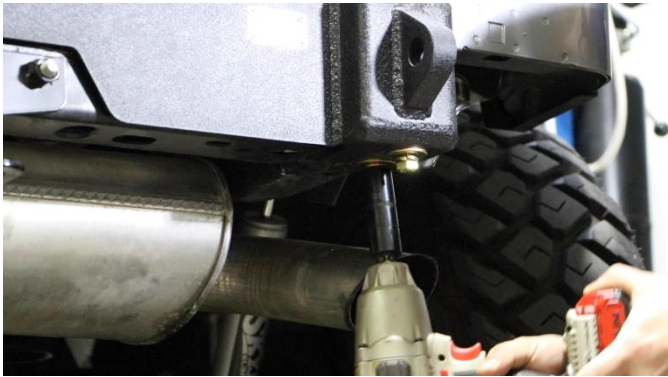
### 2) INSTALL

Place the provided nut plate in the passenger side frame rail.



#### 3) **TIGHTEN**

With the delete still loose, slide it around so that it sits on the frame as desired. While holding it in place, begin tightening the bolts with an 18 and 21mm socket.



**ENJOY YOUR NEW FISHBONE OFFROAD JL REAR BUMPER DELETE!!!**

