



## INSTALLATION INSTRUCTIONS

**PART No.**

**FB23109**

**2018 – Current Jeep® JL Wrangler  
JL Steel/ Aluminum Fenders**



### REQUIRED TOOLS

Drill  
7/16" Drill Bit  
13mm Wrench  
5mm Allen  
3mm Allen  
M8 Nutsert Tool

### KIT CONTAINS

Front Fender (Left & Right)  
Rear Fender (Left & Right)  
LED Turn Signal  
Rubber Seal (2 Sets of 3 Sizes)  
M8 Nutsert  
M8 Button Head Bolt  
M8 Flat Washer  
M8 Serrated Nut  
M5 Button Head Bolt  
M5 Flat Washer  
M5 Serrated Nut

### QTY

2  
2  
2  
6  
2  
28  
28  
26  
4  
4  
4

**Note:** These instructions will **NOT** cover how to install inner fenders. If you wish to install Fishbone Offroad JL Inner Fenders (**FB33108** & **FB33130**), please visit [www.FishboneOffroad.com](http://www.FishboneOffroad.com) or view their tutorials on [YouTube.com/FishboneOffroad](https://www.youtube.com/FishboneOffroad)

2310900

## 2018 – Current Jeep® JL Wrangler JL Steel/ Aluminum Fenders

### 1) REMOVE

Begin by removing any inner and outer fenders your vehicle currently has installed.

(For instructions on how to remove your factory fenders and inner fenders, visit Fishbone Offroad on [www.YouTube.com](http://www.YouTube.com) for the full tutorial!)

### 2) PREPARE

Install the included rubber seals around each fender's body-side edge. There should be no excess material and it should not require any trimming. The front set will use two each for the sections above and below the accent grate.

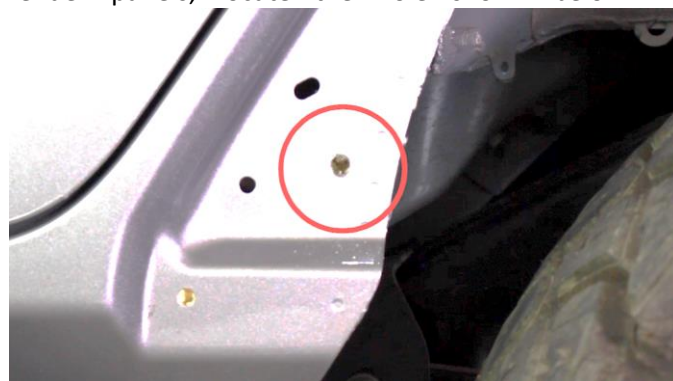


Install the included Turn Signals into each front fender. With the cord pointing towards the front of the fender, slide the signal's tab behind the front bracket while rotating it down and into the rear bracket.



Secure the signals to the fender using a 3mm Allen wrench with the included M5 bolts, washers, and serrated nuts.

In the body of the driver and passenger side rear fender panels, locate the hole shown below.



With a 7/16" drill bit, drill out the hole.







## INSTALLATION INSTRUCTIONS

**PART No.**

**FB23109**

**2018 – Current Jeep® JL Wrangler  
JL Steel/ Aluminum Fenders**

With an M8 Nutsert Tool, install a nutsert into each of the drilled holes.



With the bolts still loose, push the turn signal power cord between the body and fender brackets.



Connect the power to the vehicle and begin tightening the bolts using a 13mm wrench and 5mm Allen key. Repeat on the opposite side.



### **3) INSTALL FRONT FENDERS**

Hold the corresponding fender up to the vehicle and begin loosely securing it with 8 of the included M8 bolts, washers, and serrated nuts.





## 2018 – Current Jeep® JL Wrangler JL Steel/ Aluminum Fenders

#### 4) INSTALL REAR FENDERS

Hold the corresponding fender up to the body and begin loosely securing it with 4 of the included M8 bolts, 3 washers, and 3 serrated nuts into the holes shown below and nutsert.



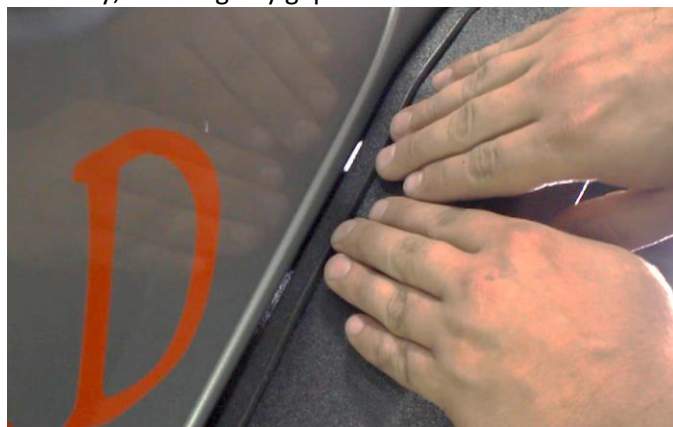
**NOTE:** If you choose to NOT run any inner fenders at all, you may drill out the two remaining holes shown below and secure the fender further with two more bolts, washers, and serrated nuts. We recommend against it, however.



With a 13mm wrench and 5mm Allen key, tighten down the bolts. Repeat on the opposite side.

#### 5) ALIGN THE SEALS

With your fingers, firmly push the seals up against the body, covering any gaps.



#### 6) ENJOY YOUR NEW FISHBONE OFFROAD JL FENDERS