



INSTALLATION INSTRUCTIONS

FTS24132		CRAWLER KIT (FRONT)
2	FT50485BK	FRONT UPPER LINK 5 TON
2	FT50518BK	FRONT LOWER LINK 5 TON
1	FT50446BK	UPPER 4-LINK MOUNT (DRIVER)
1	FT50447BK	UPPER 4-LINK MOUNT (PASSENGER)
1	FT50318BK	FRONT SKID PLATE
1	FT50398BK	FRONT CROSSMEMBER
1	FT50510	HARDWARE SUBASSEMBLY

FT50510		HARDWARE SUBASSEMBLY
1	FT50526	HARDWARE KIT
1	FT50314	CROSSMEMBER NUT TAB (DRIVER)
1	FT50315	CROSSMEMBER NUT TAB (PASSENGER)
4	FT50509	LINK TWIST WASHER
1	FT24132i	INSTRUCTIONS
4	FT50414	MISALIGNMENT 7/8"
8	FT50415	MISALIGNMENT 1"
1	FTAS12	STICKER FT BLUE 10X4 DIE CUT
1	FTAS16	DRIVER WARNING DECAL
1	FTREGCARD	REGISTRATION CARD

FT50526 - HARDWARE KIT		LOCATION
6	1/2-13 X 1-1/2" HEX BOLT	CROSSMEMBER
2	1/2-13 C-LOCK NUT	
10	1/2 SAE WASHER	
4	1/2 LOCK WASHER	
6	7/16-14 X 1-1/4" HEX BOLT	
12	7/16" SAE WASHER	
6	7/16-14 C-LOCK NUT	
2	9/16-12 X 4 HEX BOLT	FRONT LOWER LINK
2	9/16-12 C-LOCK NUT	
4	9/16" SAE WASHER	
2	7/16-14 X 3-1/4" HEX BOLT	FRONT LOWER LINK
8	7/16-14 C-LOCK NUT	
16	7/16 SAE WASHER G8 ZINC	
1	THREAD LOCKING COMPOUND 1 MIL	

2007- 2018 JEEP WRANGLER CRAWLER KIT (FRONT)

FTS24132

Fabtech Motorsports | 4331 Eucalyptus Ave. Chino, CA 91710

Tech Line: 909-597-7800 | Fax: 909-597-7185 | Web: www.fabtechmotorsports.com



- TOOL LIST -

Required Tools (Not Included)

- Basic Hand Tools
- Floor Jack
- Jack Stands
- Torque Wrench
- Drill w/ assorted drill bits
- Welder
- Assorted Metric and S.A.E sockets

- PRE-INSTALLATION NOTES -

For technical assistance call: **909-597-7800** or e-mail: **info@fabtechmotorsports.com**

READ THIS BEFORE YOU BEGIN INSTALLATION -

Check all parts to the parts list above before beginning installation. If any parts are missing contact Fabtech at 909-597-7800 and a replacement part will be sent to you immediately.

Read all instructions thoroughly from start to finish before beginning the installation. If these instructions are not properly followed severe frame, driveline and / or suspension damage may occur.

Check your local city and state laws prior to the installation of this system for legality. Do not install if not legal in your area.

Prior to the installation of this suspension system perform a front end alignment and record. Do not install this system if the vehicle alignment is not within factory specifications. Check for frame and suspension damage prior to installation.

The installation of this suspension system should be performed by two professional mechanics.

This suspension must be installed with Fabtech shock absorbers.

Use the provided thread locking compound on all hardware.

WARNING- Installation of this system will alter the center of gravity of the vehicle and may increase roll over as compared to stock.

Vehicles that receive oversized tires should check ball joints, uniballs, tie rods ends, pitman arm and idler arm every 2500-5000 miles for wear and replace as needed.

Verify differential fluid is at manufactures recommended level prior to kit installation. Installation of the kit will reposition the differential and the fill plug hole may be in a different position. (For example, if the manufacture recommends 3 quarts of fluid, make sure the diff has 3 quarts of fluid). Check your specific manual for correct amount of fluid.

Fabtech replacement driveshafts are required with this system. Due to the different shafts for the 2-door and 4-door models, the driveshafts are sold separately. See chart below for proper driveshafts for your model of Jeep.

FTS94057	2007-UP Front Driveshaft 2/4 Door
FTS94051	2007-11 Rear Driveshaft 2 Door Only
FTS94052	2007-11 Rear Driveshaft 4 Door Only
FTS94058	2012 - UP Rear Driveshaft 2 Door Only
FTS94059	2012 - UP Rear Driveshaft 4 Door Only

- INSTRUCTIONS -

NOTE: REFER TO OPTIONAL KIT BOX INSTRUCTIONS PRIOR TO INSTALLATION.

1. Disconnect the negative terminal on the battery. With the vehicle on level ground, set the emergency brake and block the rear tires. Jack up the front end of the truck and support the frame rails with jack stands. **NEVER WORK UNDER AN UNSUPPORTED VEHICLE!** Remove the front tires. Support the front axle. Do not allow to hang freely. Refer to coil spring instructions for disassembly of end links, coil springs and other components.
2. Remove factory cross member and save hardware. Next, remove the front upper and lower link arms.

If you are installing the FTS94060 loop delete pipe for 2012-13 models do so now with the instructions provided.

3. Use a paint pen and mark the inside of the lower link arm pockets as shown in the photos (cut will need to flush with the outside mount, not the frame itself). Use a sawzall or die grinder with a cut off wheel and remove the inside of the pocket. Use an angle grinder with a sanding disc to sand the cut area of the pocket. Paint all bare metal areas. **SEE FIGURE 1-3**

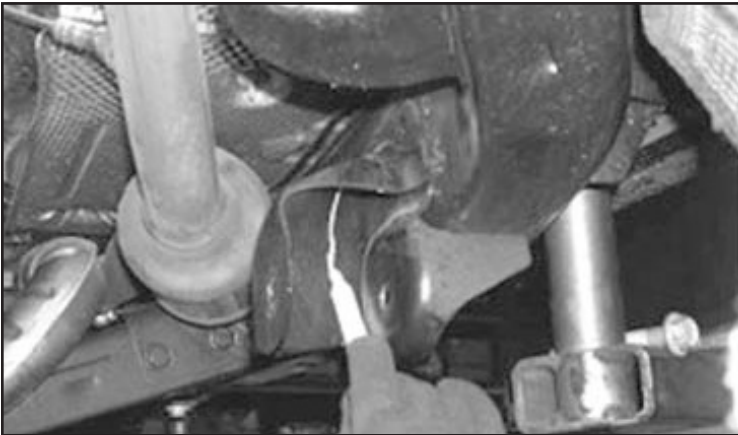


FIGURE 1 - STEP 3

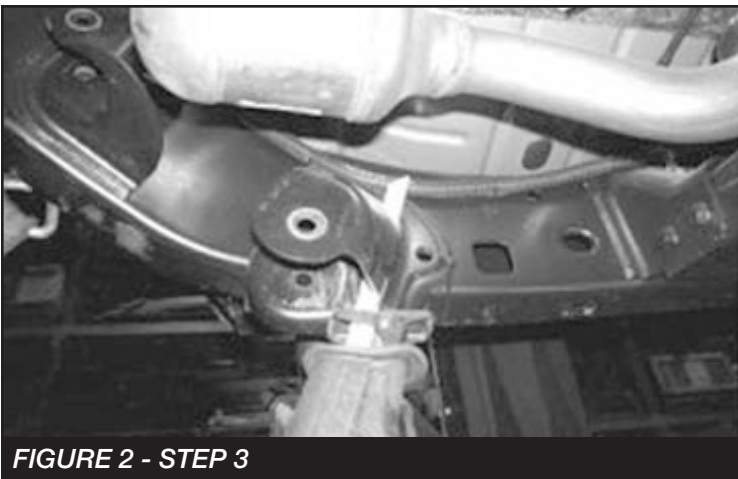


FIGURE 2 - STEP 3

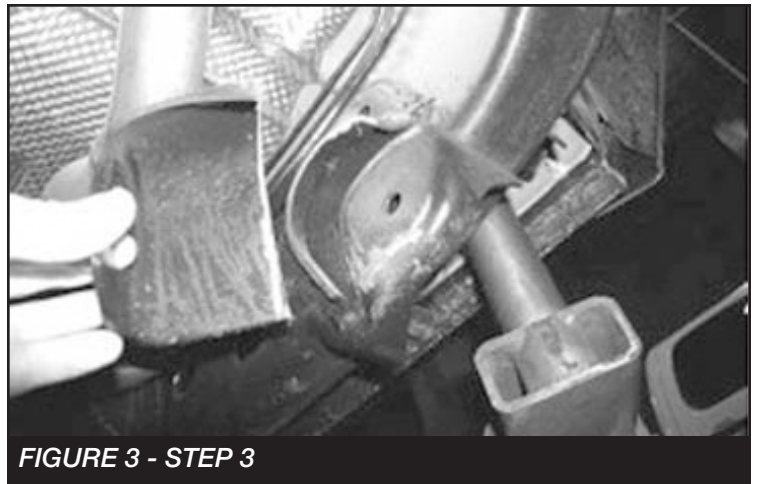


FIGURE 3 - STEP 3

4. Next, Locate the upper link pockets. Mark and cut the factory bracket off of the frame. Sand to a smooth finish and paint all raw surfaces. **SEE FIGURES 4-5**



FIGURE 4 - STEP 4



FIGURE 5 - STEP 4

5. Install FT50446BK (Driver Upper Link Mount) and FT50447BK (Pass Upper Link Mount) to FT50398BK (Front Crossmember) using the supplied 7/16 X 1-1/4" Bolts, nuts and washers. Torque to 83 ft-lbs **SEE FIGURE 6**

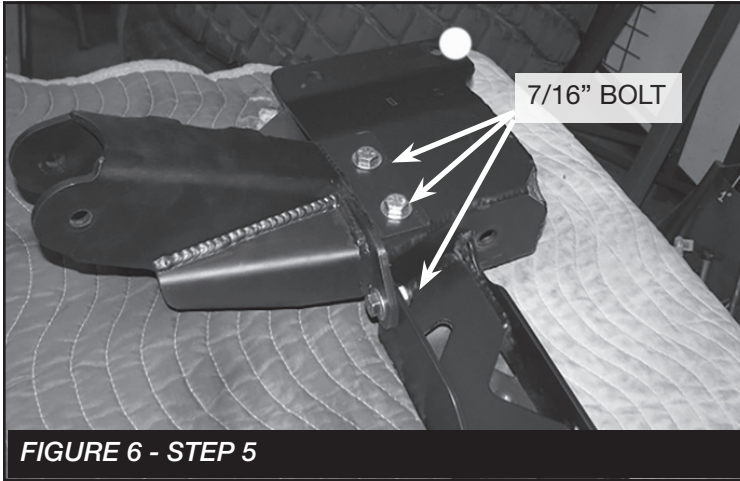


FIGURE 6 - STEP 5

6. Using another person, mount the new Fabtech crossmember using the factory bolt in the forward hole on both driver and passenger sides. Leave loose. **SEE FIGURE 7. NOTE: DUE TO VARIANCES, 07-11 MODEL FACTORY EXHAUSTS NEED TO BE RE-SHAPED FOR CROSSMEMBER FITMENT. SEE FIGURE 8 FOR LOCATION OF EXHAUST THAT NEEDS TO BE MODIFIED.**

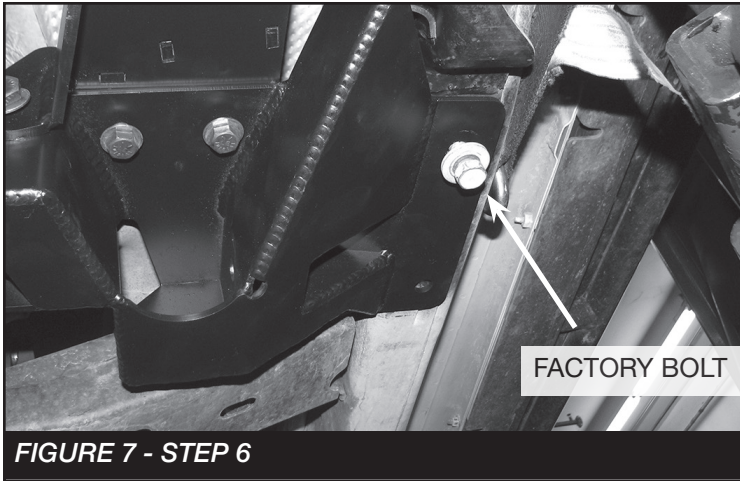


FIGURE 7 - STEP 6

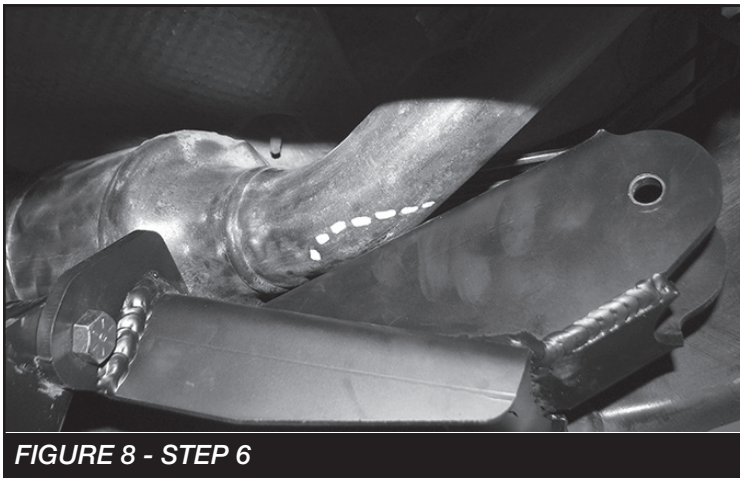


FIGURE 8 - STEP 6

7. Install the supplied 1/2 x 1-1/2" bolt, nut and washers at the new crossmember and factory lower link mount. **SEE FIGURE 9.**

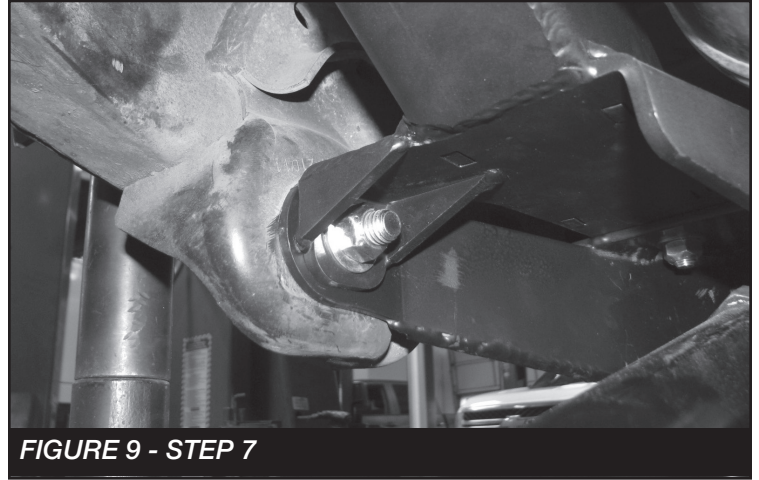


FIGURE 9 - STEP 7

8. Mark & drill the bottom frame for the rear hole on the new crossmember. Use a small drill bit first and follow with a 1/2" bit. Locate FT50314 & FT50315 Nut Tabs, 1/2" x 1 1/2" bolts with flat & split washers. Insert the nut tab into the frame and attach** with the 1/2" hardware. Torque all crossmember hardware to 127 ft-lbs **SEE FIGURES 10-11**



FIGURE 10 - STEP 8



FIGURE 11 - STEP 8

9. Install FT50318BK Skid Plate, using the supplied 1/2" x 1 1/2" bolts with flat & split washers, and the factory skid plate hardware. Attach **the front of the skid plate to the new crossmember with the 1/2" hardware and the rear to the factory crossmember with the factory hardware. Torque the 1/2" & 12mm hardware on the crossmember to 127lbs. **SEE FIGURE 12**



FIGURE 12 - STEP 9

10. Locate both FT50518BK (Lower Link) and install (2) FT50415 (1" Misalignments) into each rod end as well as a FT50509 (Link twist washer) on the inner side of the axle end. **NOTE: BOTH LOWER AND UPPER LINKS COME PRE-SET FOR THE CORRECT LENGTH. SEE FIGURE 13**



FIGURE 13 - STEP 10

11. Install the new lower links using the supplied 9/16 X 4" hardware for the crossmember side and the factory hardware for the axle side. Torque 9/16" hardware to 184 ft-lbs and the factory to 160 ft-lbs. **SEE FIGURE 14-15**



FIGURE 14 - STEP 11



FIGURE 15 - STEP 11

12. Locate FT50485BK (Upper Links) and install (2) FT50414 (7/8" Misalignments) into each rod end as well as a FT50509 (Link twist washer) on the inner side of the rod end. **SEE FIGURE 16**



FIGURE 16 - STEP 12

13. Install both new upper link using the supplied 7/16 X 3-1/4" hardware for the crossmember side and the factory hardware for the axle side. Torque 7/16" hardware to 83 ft-lbs and the factory hardware to 100 ft-lbs. **SEE FIGURE 17-19**

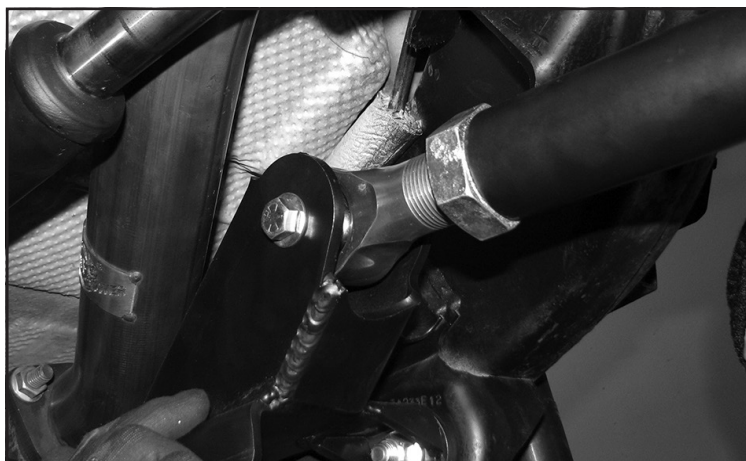


FIGURE 17 - STEP 13



FIGURE 18 - STEP 13

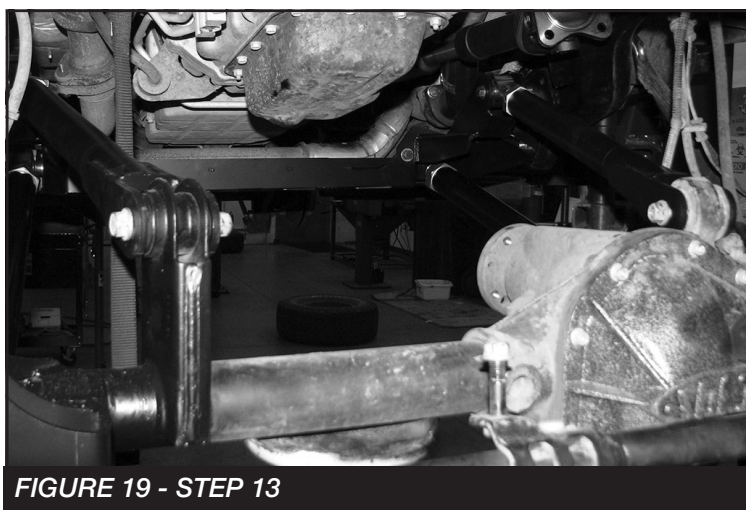


FIGURE 19 - STEP 13

14. Install tires and wheels and torque lug nuts to wheel manufacturer's specifications. Turn front tires left to right and check for appropriate tire clearance. **Note - Some oversized tires may require trimming of the front bumper & valance.**
15. Check front end alignment and set to factory specifications. Readjust headlights.
16. Recheck all bolts for proper torque.
17. Recheck brake hoses, ABS wires and suspension parts for proper tire clearance while turning tires fully left to right.
18. Check the fluid in the front and rear differential and fill if needed with factory specification differential oil. **Note - some differentials may expel fluid after filling and driving. This can be normal in resetting the fluid level with the new position of the differential/s.**
19. Install Driver Warning Decal. Complete product registration card and mail to Fabtech in order to receive future safety and technical bulletins on this suspension.

Vehicles that will receive oversized tires should check ball joints, uniballs and all steering components every 2500-5000 miles for wear and replace as required.

RE-TORQUE ALL NUTS, BOLTS AND LUGS AFTER 50 MILES AND PERIODICALLY THEREAFTER.

For technical assistance call: **909-597-7800**

- Product Warranty and Warnings -

Fabtech provides a Limited Lifetime Warranty to the original retail purchaser who owns the vehicle, on which the product was originally installed, for defects in workmanship and materials.

The Limited Lifetime Warranty excludes the following Fabtech items; bushings, bump stops, ball joints, tie rod ends, limiting straps, cross shafts, heim joints and driveshafts. These parts are subject to wear and are not considered defective when worn. They are warranted for 60 days from the date of purchase for defects in workmanship.

Dirt Logic and Performance Coilover take apart shocks are considered a serviceable shock with a one year warranty on leakage only. Service seal kits are available separately for future maintenance. All other shocks are covered under our Limited Lifetime Warranty.

Fabtech does not warrant any product for finish, alterations, modifications and/or installation contrary to Fabtech's instructions. Alterations to the finish of the parts including but not limited to painting, powder coating, plating and/or welding will void all warranties. Some finish damage may occur to parts during shipping, which is considered normal and is not covered under warranty.

Fabtech products are not designed nor intended to be installed on vehicles used in race applications or for racing purposes or for similar activities. (A "RACE" is defined as any contest between two or more vehicles, or any contest of one or more vehicle against the clock, whether or not such contest is for a prize). This warranty does not include coverage for police or taxi vehicles, race vehicles, or vehicles used for government or commercial purposes. Also excluded from this warranty are sales outside of the United States of America.

Installation of most suspension products will raise the center of gravity of the vehicle and will cause the vehicle to handle differently than stock. It may increase the vehicle's susceptibility to a rollover, on road and off road, at all speeds. Extreme care should be taken to operate the vehicle safely at all times to prevent rollover or loss of control resulting in serious injury or death. Fabtech front end Desert Guards may impair the deployment or operation of vehicles equipped with supplemental restraining systems/air bag systems and should not be installed if the vehicle is equipped as so.

Fabtech makes every effort to ensure suspension product compatibility with all vehicles listed on the website, but due to unknown auto manufacturer's production changes and/or inconsistencies by the auto manufacturer, Fabtech cannot be responsible for 100% compatibility, including the fitment of tire and wheel sizes listed. The Tire and Wheel sizes listed in Fabtech's website are only a guideline for street driving with noted fender trimming. Fabtech is not responsible for damages to the vehicle's body or tires. Fabtech is not responsible for premature wear of factory components due to the installation of oversized tires and wheels.

Fabtech's obligation under this warranty is limited to the repair or replacement, at Fabtech option, of the defective product only. All costs of removal, installation or re-installation, freight charges, incidental or consequential damages are expressly excluded from this warranty. Fabtech is not responsible for damages and/or warranty of other vehicle parts related or non related to the installed Fabtech product. This warranty is expressly in lieu of all other warranties expressed or implied. This warranty shall not apply to any product that has been subject to accident, negligence, alteration, abuse or misuse as determined by Fabtech.

Fabtech suspension components must be installed as a complete system including shocks as shown on our website. All warranties will become void if Fabtech parts are combined and/or substituted with other aftermarket suspension products. Combination and/or substitution of other aftermarket suspension parts may cause premature wear and/or product failure resulting in an accident causing injury or death. Fabtech does not warrant products not manufactured by Fabtech.

Depending on the condition of the factory suspension components retained after the installation of a Fabtech suspension not all vehicles may have the same ride stance front to rear as described in the website. The blue color of suspension components shown in all Fabtech photographs are for display purposes only. Majority of all Fabtech components will be black specifically where noted with part numbers ending in BK.

Installation of Fabtech product may void the vehicles factory warranty; it is the consumer's responsibility to check with their local vehicle's dealer for warranty disposition before the installation of the product. Some state laws may prohibit modification of suspension to a vehicle in whole or in part. It is the responsibility of the installer and consumer to consult local laws prior to the installation of any Fabtech suspension product to comply with such written laws.

It is the responsibility of the distributor and/or the retailer to review all warranties and warnings of Fabtech products with the consumer prior to purchase.

Fabtech reserves the right to super cede, discontinue, change the design, finish, part number and/or application of parts when deemed necessary without written notice. Fabtech is not responsible for misprints or typographical errors within the website or price sheet. For the most recent Product Warranty and Warnings visit our website www.fabtechmotorsports.com