



THE AUTOMOTIVE LIGHTING BENCHMARK

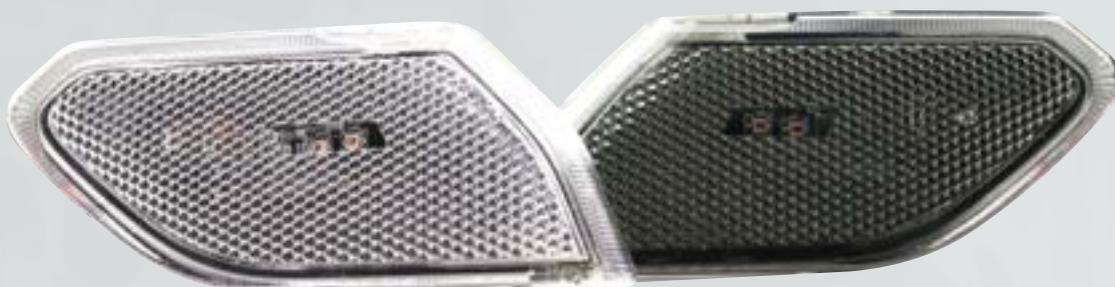
# 2018+ JEEP JL XB LED DRL / SIGNAL INSTALL GUIDE

**WARNING:** By reading this document, you agree it is only to be used as an educational guide. Morimoto Lighting nor its dealers make guarantees on any finished results, nor are they to be held responsible for any damage, misuse, or personal injuries. If you are unable to clearly understand and adapt the information below, professional installation is recommended.

## PACKAGE CONTENTS



2X DRL ASSEMBLIES



(OPTIONAL)  
2X LED SIDE MARKERS

# INSTALLATION PROCESS

Disclaimer: While it is possible to do this installation without removing the fenders, we have found that it is easier to do so.

1. Remove the screws and clips inside the fender liner and pull the fender liner down. This video is a great resource to follow: <https://www.youtube.com/watch?v=XC5SOHjfkQw>







2. Lift the entire fender up and away from your Jeep. There are several clips holding it on as you can see from the images below, but you can pull it off with moderate force to safely remove it.





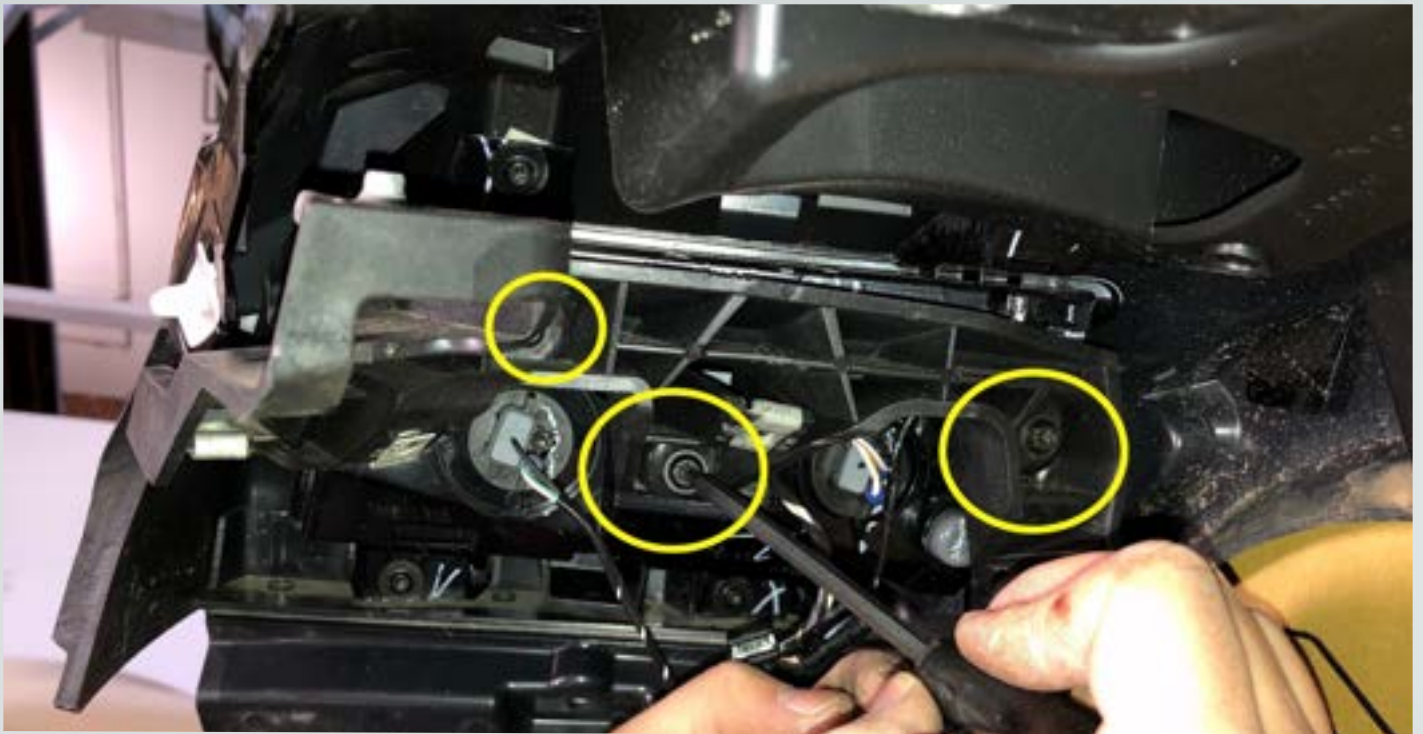




3. Unplug the harness to completely remove the fender.



4. Unscrew the three T25 Torx screws on the bracket behind the OEM DRL.



5. Remove the ribbed plastic clip on the side of the fender. After this, you can remove the bracket.



6. Remove the T25 Torx screw holding the side marker in place.

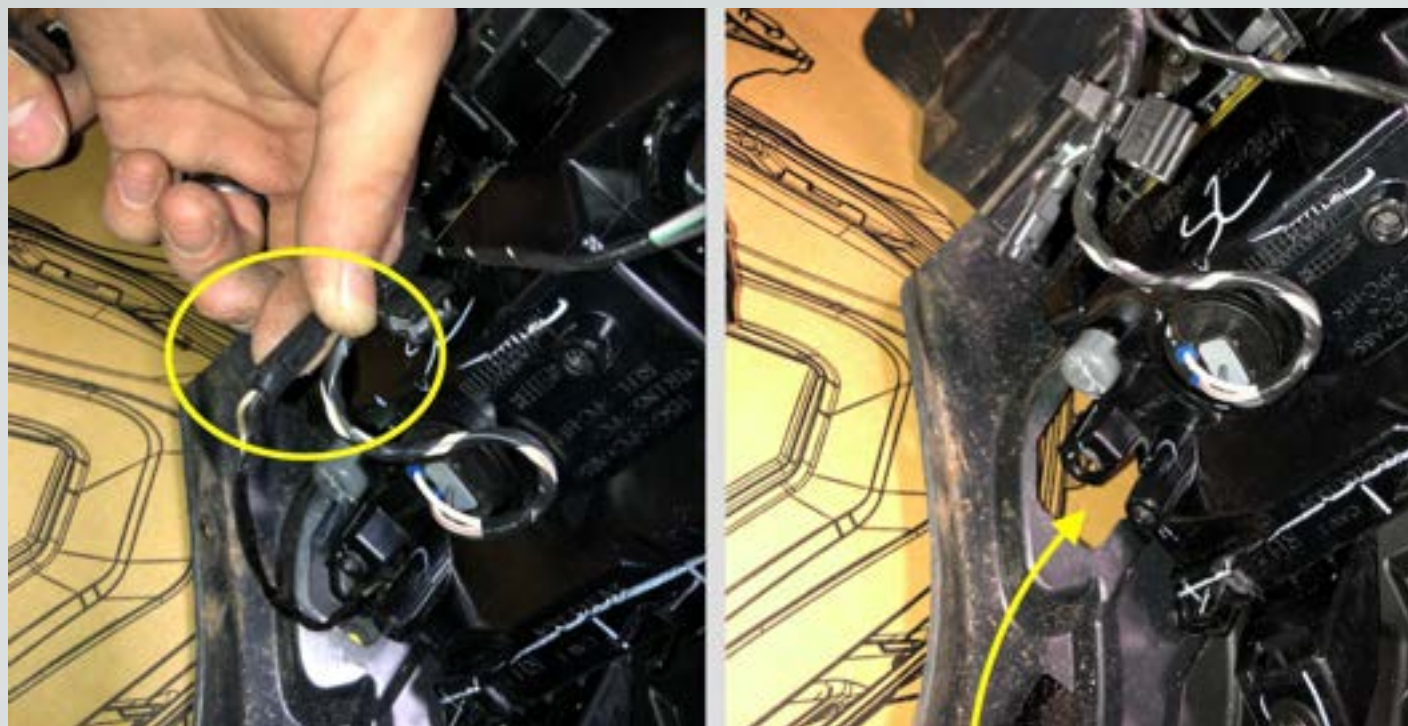




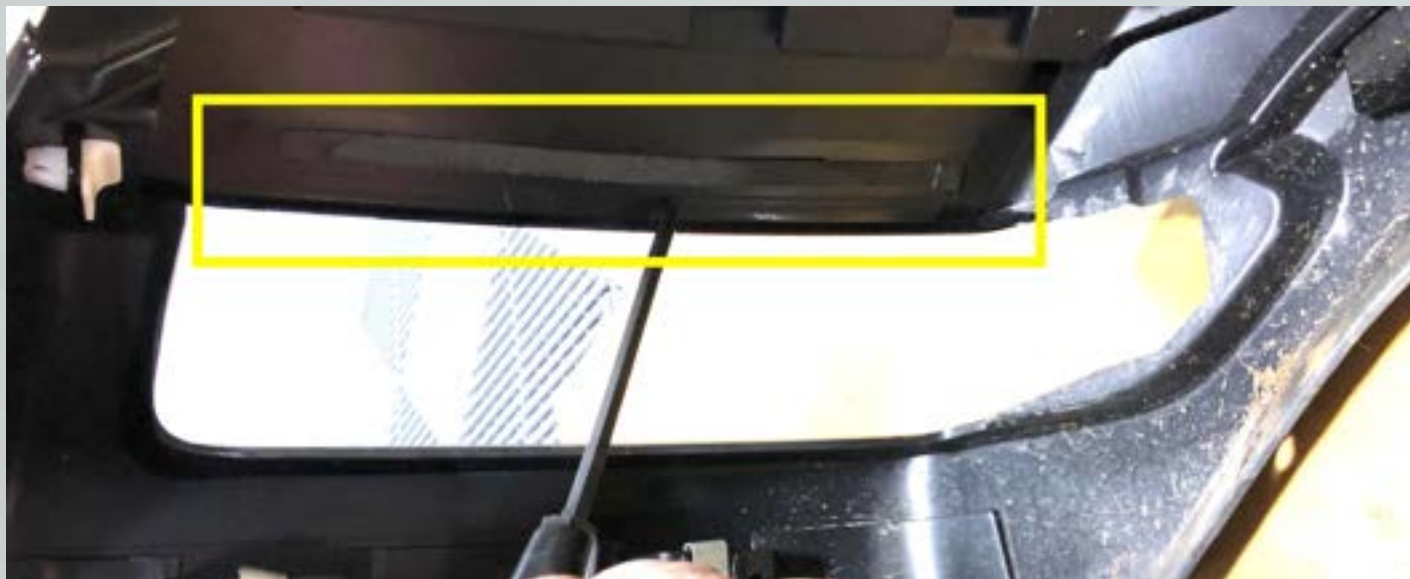
7. Remove the two T20 Torx screws at the top of the OEM DRL.



8. Unplug the small 2 pin connector for the OEM Amber sidemarker. It can then be removed by sliding it forward and away from the DRL/Fender.



9. You will need to pull the OEM DRL off of the fender. There is hidden double-sided tape holding it on from the front-side, and it's very strong.



10. Remove the OEM wire harness for the stock DRL that runs to the back of the fender. There are a couple clips holding it in. Then re-route the harness for the new LED DRL back in the same place.



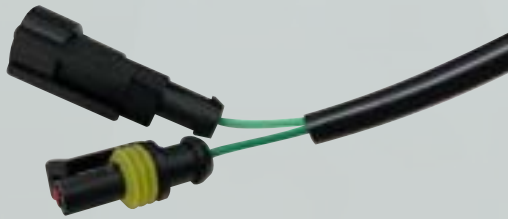


11. Re-install the new LED DRL in exact reverse order that was just used to remove the OEM assembly, starting with using the provided double-sided tape to replace the original. (not shown)

## WIRING IDENTIFICATION:

### GREEN SINGLE PIN CONNECTORS

NOTE: Due to varying electrical systems on the JL & associated equipment, not all are compatible with the sequential signals.



SEQUENTIAL TURN SIGNAL OPERATION

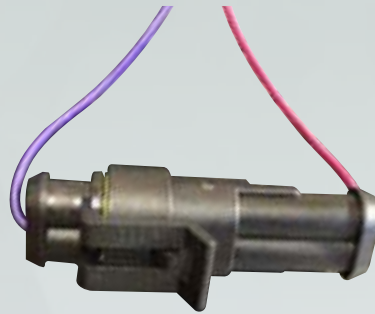


STANDARD (BLINKING) TURN SIGNAL OPERATION

### PURPLE & PINK TWO PIN CONNECTORS

Leave unplugged for pulsing white LED DRL  
(bright, dim, bright, dim)

Leave connected for standard white LED DRL  
(bright only unless parking light or turn  
signal is active) (recommended)



### RED & BLACK TWO PIN CONNECTORS

Connects to the side-marker (compatible with OEM or Morimoto)



NOTE: On the premium edition there are only 5 of the 6 pins used, (Pin 3, the second ground, is gone). Pin 6 is the common ground. The Side marker is powered off pin 4 which is also the low output DRL. On the base model wiring Pin 1 is what powers the side marker. So for the premium models the side marker needs to be powered off pin 4 not pin 1. This would fix the issue with the side marker not working at all.

-END-