



# GROMMET STYLE FLOORMAT INSTALLATION

Some applications may have 1 or more grommet(s) to fasten to the OEM factory installed floormat safety hook(s). Be sure to fasten all grommets before operating the vehicle.

*See the corresponding images for the proper fastening of your factory floorpan fit mats.*



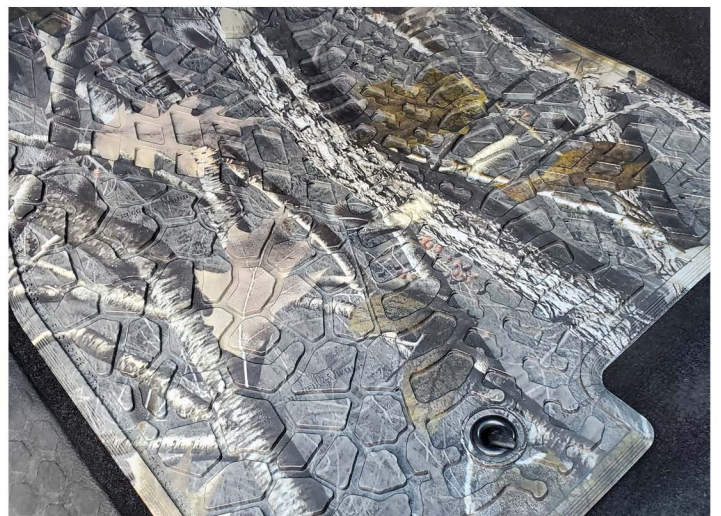
Remove old mats to expose your vehicle's safety hook(s)



Slide the grommet(s) of your FLEXTREAD™ mat onto the hook(s)



Slide the mat forward slightly making sure that each hook is fully engaged through the grommet



The fully installed mat