

# Quadratec® Grab Handles for Jeep® Wrangler JK Vehicles

## Installation and Instruction Sheet

#14117.000X and #14018.171X

### **⚠ CAUTION ⚠**

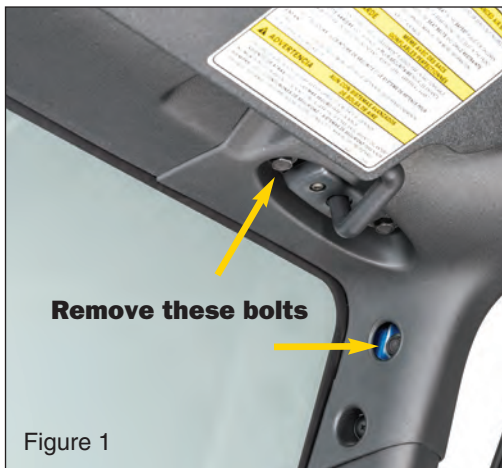
**READ ALL SAFETY MESSAGES AND ALWAYS WEAR SAFETY GLASSES WHEN WORKING WITH TOOLS.**

#### **REQUIRED TOOLS:**

10mm and 13mm Socket & Wrench  
Safety Glasses

#### **KIT CONTENTS:**

Quadratec Grab Handles (Pair)  
Flat Washers for A Pillar Mounting only (4)



#### **Front Corner "A" Pillar (Windshield) Grab Handle Installation**

*First put on safety glasses.*

*Starting on your choice of driver or passenger side, using 13mm Wrench, remove inner sun visor bolt and the "A" Pillar Bolt as shown in figure 1.*

*As shown in Figure 2, position the grab handle and reinstall the factory bolts with the supplied flat washer between the bolt head and the grommet in the grab handle.*

*Tighten using 13mm wrench.*



*Repeat process for opposite side of vehicle from which you started.*

*Note: Second Seat Roll Bar Grab Handle Installation on next page.*



**The Trusted Source**



### **2nd Seat JK Unlimited Roll Bar Grab Handle Installation**

*First put on safety glasses.*

*Starting your choice of driver or passenger side, using 10mm Wrench, remove outer soundbar bolts.*

*As shown in Figure 3, position the grab handle and re-install original bolts through the Grab Handle grommets. Tighten using 10mm wrench.*

*Repeat process for opposite side of vehicle from which you started.*



**The Trusted Source**



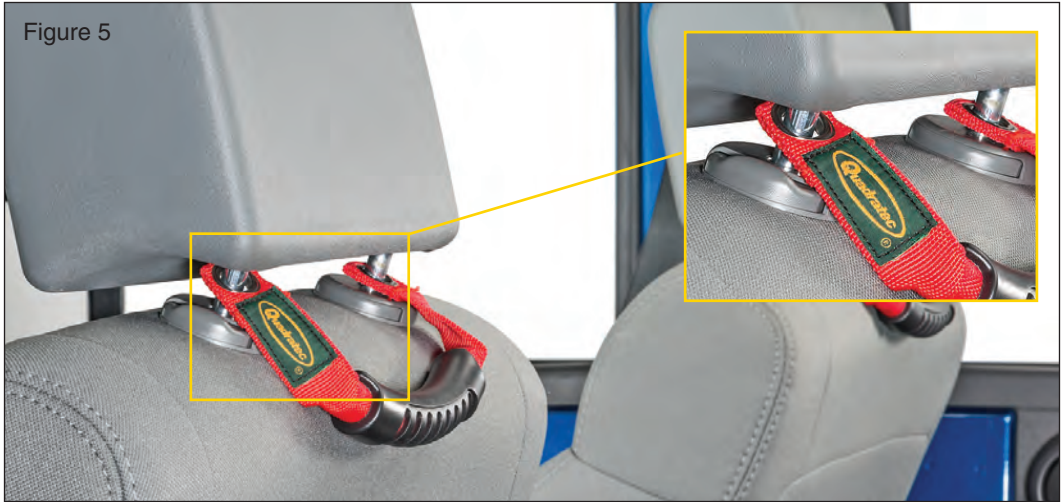
**JK 2nd Seat Headrest  
Grab Handle Installation**

*No tools required. Recline both front seats. Depress both headrest buttons at the same time on one of the front seats and pull up to temporarily remove headrest. (Figure 4)*

*As shown in Figure 5, slip each headrest post through each grab handle grommet and reinstall headrest as shown. Repeat process for opposite side of vehicle from which you started.*

**⚠ CAUTION ⚠**

**DO NOT PERMANENTLY REMOVE HEADRESTS. HEAD RESTS MUST BE PROPERLY REINSTALLED FOR OCCUPANT SAFETY.**



**The Trusted Source**

# Quadratec® Exclusive Three Year Limited Warranty

Your Quadratec® branded accessories are covered by the following **Limited Warranty** provided exclusively by Quadratec, Inc., 1028 Saunders Lane, West Chester PA 19380.

This **Limited Warranty** is the only warranty made in connection with your purchase. Quadratec neither assumes nor authorizes any vendor, retailer or other person or entity to assume for it any other obligation or liability in connection with this product or **Limited Warranty**. This **Limited Warranty** does not apply and is not cumulative to any accessory or part distributed by Quadratec for which the Manufacturer provides a separate written warranty.

**What is Covered:** Subject to the terms, exclusions and limitations herein and with respect only to Quadratec branded accessories first sold in the United States, Quadratec warrants to the initial retail purchaser only that your Quadratec accessory shall be free of defects in material and workmanship: **for a period of three (3) years from date of retail purchase.**

This **Limited Warranty** is not assignable and shall terminate upon sale of the vehicle upon which the Quadratec accessory is installed or other transfer third persons.

All other warranties are hereby disclaimed, except to the extent prohibited by applicable law in which case any implied warranty of merchantability or fitness for a particular purpose on this product is limited to 3 year from date of initial retail sale. Quadratec reserves the rights to: (a.) require invoice or other proof your accessory is within the terms of this **Limited Warranty** as a condition of warranty service and, (b.) make future revisions to this product and **Limited Warranty** without prior notice or obligation to upgrade your product.

**What is Not Covered:**

Your Quadratec **Limited Warranty** does not cover products or parts Quadratec determines to have been damaged by or subjected to:

(a.) installation damage, alteration, modification, combination with other parts, failure to maintain or improper repair or service, (b.) normal wear & tear, cosmetic damage or damage from moisture or water immersion, (c.) Acts of God, accidents, misuse, negligence, inadequate mounting or impact with vehicle(s), obstacles or other aspects of the environment, (d.) theft, vandalism or other intentional damage.

**Remedy Limited to Repair/Replacement:**  
**The exclusive remedy provided hereunder shall, upon Quadratec inspection and at Quadratec's option, be either repair or replacement of product or parts (new or refurbished) covered under this Limited Warranty.** Customers requesting warranty consideration should first contact Quadratec to obtain a RGA number (610-701-3336). All labor, removal, shipping and installation costs are customer's responsibility.

**Other Limitations - Exclusion of Damages - Your Rights Under State Law:**

In consideration of the purchase price paid, neither Quadratec nor any independent Quadratec distributor/licensee are responsible for any time loss, rental costs, or for any incidental, consequential, punitive or other damages you may have or incur in connection with any part or product purchased. Your exclusive remedy hereunder for covered parts is repair/replacement as described above.

This **Limited Warranty** gives you specific rights. You may also have other rights that vary from state to state. For example, some states do not allow limitations of how long an implied warranty lasts and /or do not allow the exclusion or limitation of incidental or consequential damages, so the limitations and exclusions herein may not apply to you.

©Quadratec, Inc. 2017. All Rights Reserved.

Part #12999.9011



**The Trusted Source**