

JEEP JL/JT ELITE HALF DOORS (FRONT)

2018+ JEEP JL/2020+ JEEP JT
HDJL-02F



TOOLS REQUIRED

- 3mm, 5mm Allen Bit
- T40, T50 Torx Bit
- 8mm, 13mm Socket
- 13mm Wrench
- Ratchet

SKILL LEVEL

- Novice/Intermediate
- 1 (you) to 2 persons

Little skill level required, you can easily install it by yourself however, additional help will be useful

TIME REQUIRED

- 1.5 Hours

Time to install this should only take about an hour and a half

WARNINGS/CAUTIONS BEFORE STARTING INSTALLATION

Before you install this kit – Read and understand all instructions, warnings, cautions, and notes contained in this installation instruction guide. Consult your vehicle owner's manual for proper disconnection of electrical and lifting of vehicle if required for installation of this product.

This install may require some technical skills and knowledge of basic mechanical work. If you do not feel that you are capable of performing this install please take this product to a trained professional.

After reading this guide please contact us with any questions or concerns before installing product.
Customer Service: 855-680-9595

DVB Offroad is not responsible for any bodily injury or harm to you or your vehicle as a result of an improper install.

Proper installation of this kit required knowledge of the factory recommended procedures for removal and installation of original equipment components. We recommend that the factory shop manual and any special tools needed to service your vehicle be on hand during the installation. Installation of this kit without proper knowledge of the factory recommended procedures may affect the performance of these components and the safety of the vehicle

- Always wear eye protection when operating power tools

Inspect all contents of this package to make sure product is not damaged and all installation hardware has been included. If parts are missing from kit, please be prepared to provide the following information

1. Name of purchase location
2. Bar Code on side of box
3. Date above bar code
4. Date inside box cover



INSTALLATION MANUAL

STEP 1

Begin by unpacking all items and inspecting for missing pieces or damage. If you have any concerns, please contact the company the product was purchased from.

HARDWARE INCLUDED

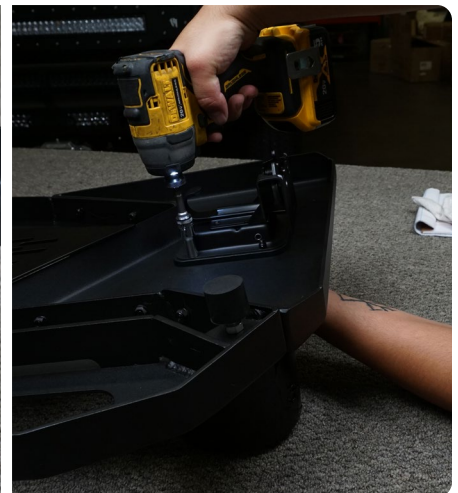
- (8) M8x25 Allen Bolts
- (20) M8 Flat Washers
- (12) M8 Split Washers
- (12) M8 Nuts
- (8) M5x20 Allen Head Bolts
- (8) M5 Nuts



STEP 2

Install the door latches using the provided M5 hardware with 8mm socket and 3mm allen bit. We provide a spacer plate that we recommend installing at this time and removing later if necessary. Take note of the orientation of the latches as they are side specific.

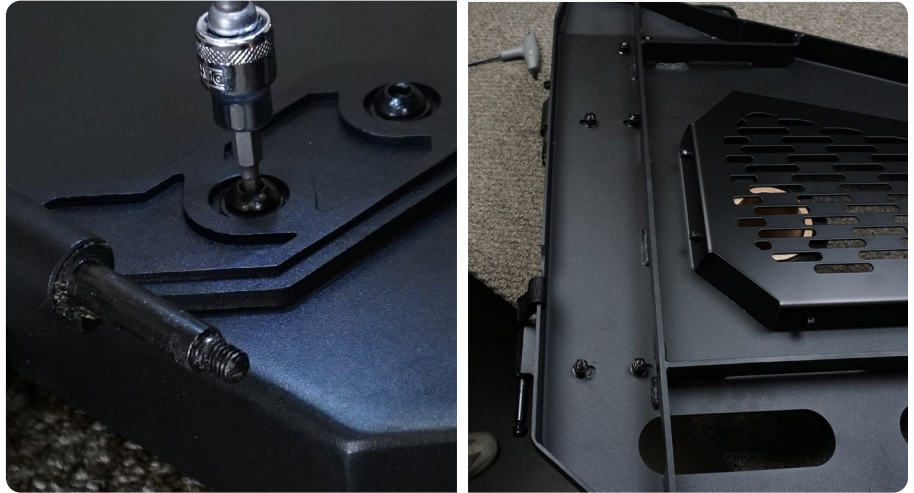
Note: Spacer will go between inside of door and latch.



INSTALLATION MANUAL

STEP 3

Loosely install hinges on the doors using the provided M8 hardware with a 13mm socket and 5mm allen bit. The threads will be facing towards the bottom of the door.



STEP 4

Install the mirrors on the doors using the provided M8 hardware with a 13mm socket.

Note: Do not over tighten mirror bolts.

There is an extra hole drilled to be able to use mirrors that may have a different mounting position.



STEP 5

Remove the nuts off the half doors using a 13mm socket and save for installation of the doors on the vehicle in later steps.



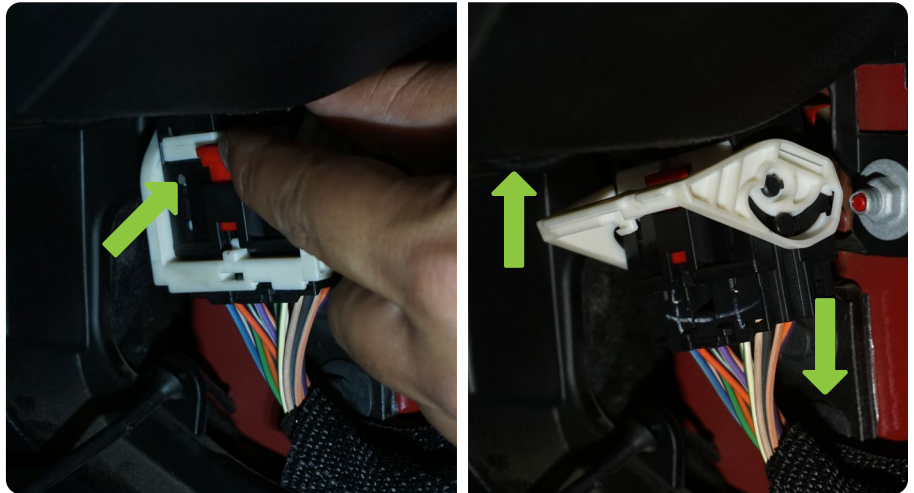
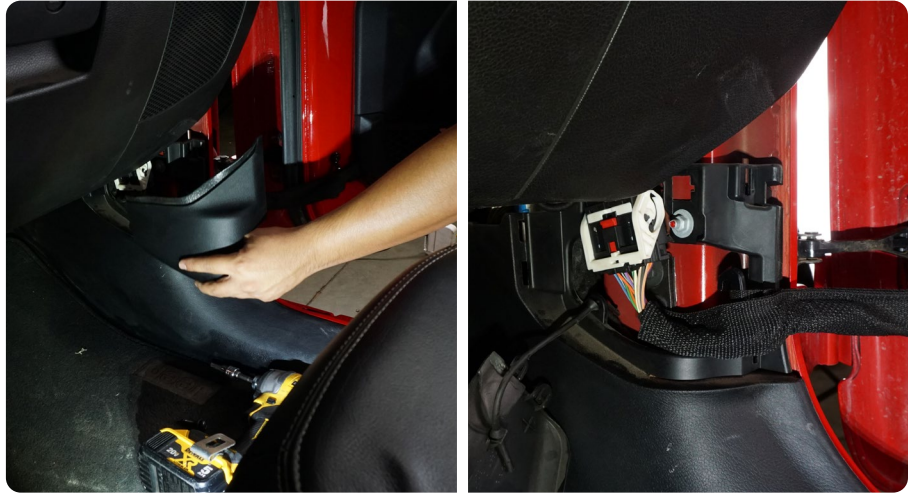
INSTALLATION MANUAL

STEP 6

Moving to the vehicle, begin removing the door by disconnecting the wire connector located behind the trim panel where the door straps lead.

Remove the trim panel by pulling towards the rear of the vehicle until it unclips. Remove the wire connector by rotating the white clip until the connector is no longer locked, and then pull free.

Roll down your windows prior to disconnecting the wiring. This will make lifting the doors off easier and protect the glass from damage.

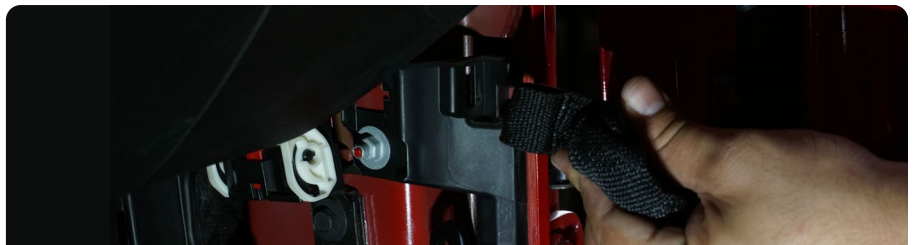


STEP 7

Now that the wiring harness has been disconnected, lift on the door strap to remove it from the hook.

Using a T40 torx bit, remove the door check.

Note: Take caution not to damage the vehicle as the doors may swing towards the front fender.



INSTALLATION MANUAL

STEP 9

Use a T50 torx bit to remove the bolts securing the doors to the vehicle. With the assistance of another person, lift the door carefully off the vehicle and set off to the side, being careful not to damage the door or vehicle.



STEP 10

Lift the DV8 half door and carefully align the studs into the door mounts, and loosely secure the provided M8 nuts to the studs with a 13mm socket.

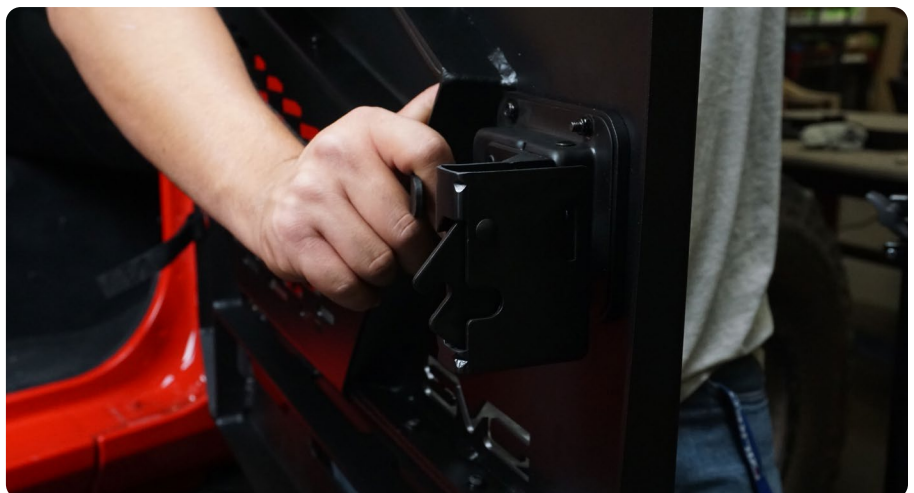


STEP 11

Open the latch on the door to the open position and slowly close the doors to the latch mechanism on the Jeep to check fitment.

If your door cannot latch, adjust the bumpstop by threading it into the door, until the latch can close properly. Once closed, check that the bumpstop is contacting the vehicle to prevent rattling. In some cases, it may be necessary to remove the nut to be able to get the door to latch with proper fitment.

At this time, you can also determine if the spacer plate for the latching mechanism, needs to be removed.





STEP 12

With the door closed, lift slightly on the front section of the door to apply pre-load and secure the hinges using a 5mm allen bit and 13mm wrench.



INSTALLATION MANUAL

STEP 13

Attach the door strap to the hook to prevent it from swinging completely open.



STEP 14

Install trim piece by pushing towards the front of the vehicle until it clips into place.



STEP 15

Secure the M8 Nuts on the hinges using a 13mm wrench.

Note: Do not over tighten. Threads will break if overtightened.



INSTALLATION MANUAL

STEP 16

Double check fitment and all hardware is secure. Repeat steps for the other side. Congratulations, you are now finished with the install of the JT/JL Half Doors!

