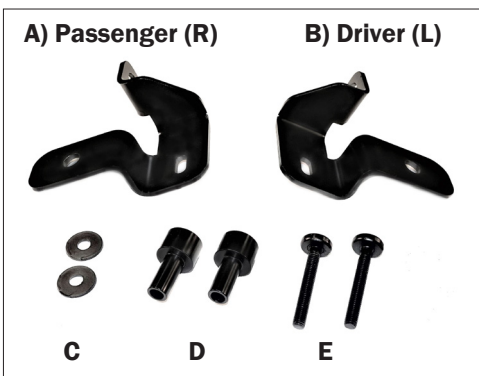


Quadratec® Hinge Mount Light Brackets-JL-JT

Installation Manual For 2018 - Current Wrangler JL & JT Vehicles #12110.9050



PARTS LIST:

A) Passenger Side Bracket	QTY 1
B) Driver Side Bracket	QTY 1
C) M6 Washers	QTY 2
D) Step Spacer 19 x 34.2mm	QTY 2
E) M6 x 1 x 50mm Cap Screw	QTY 2

REQUIRED TOOLS:

Safety Glasses
Torque Wrench
T50 Torx Bit Socket & Ratchet Driver
T40 Torx Bit Socket & Ratchet Driver
4mm Hex Bit Socket & Ratchet Driver
3/8" Box Wrench



READ ALL SAFETY MESSAGES AND UNDERSTAND ALL INSTRUCTIONS BEFORE ATTEMPTING TO INSTALL THIS PRODUCT. ALWAYS WEAR SAFETY GLASSES DURING INSTALLATION.

Quadratec
The Jeep® Experts

A Few Words About Product Safety:
Your Hinge Mounted Light Brackets are designed to enhance the utility and enjoyment of your off road capable vehicle. Before installation, please take a moment to review the following safety

information and installation instructions. Important safety information is generally preceded by one of three signal words indicating the relative risk of injury, property damage or adverse consequence. The signal words mean:

⚠ WARNING ⚠

A hazardous situation which, if not avoided, could result in death or serious injury. You CAN be KILLED or SERIOUSLY HURT if you don't follow instructions.

⚠ CAUTION ⚠

A hazardous situation which, if not avoided, could result in minor or moderate injury. You CAN be moderately HURT and also may suffer property damage if you don't follow instructions.

NOTICE

Careful attention is required to this instruction or operation but does generally not relate to personal injury. Damage to your Quadratec® product or other property may result if you don't follow instructions.

Before You Begin Installation:
Congratulations on your purchase of the Quadratec Hinge Mount Light Brackets for your Jeep® Wrangler.

due to shipping. If any part is missing or broken, please call Customer Service at 800-745-6037 as soon as possible.

When unpacking, check to make sure parts are included and not damaged

Thank you again for your purchase and let's start the installation process.

⚠ CAUTION ⚠

READ ALL SAFETY MESSAGES AND UNDERSTAND ALL INSTRUCTIONS BEFORE ATTEMPTING TO INSTALL THIS PRODUCT. ALWAYS WEAR SAFETY GLASSES DURING INSTALLATION.



Quadratec®
The Jeep® Experts

Bracket Installation:



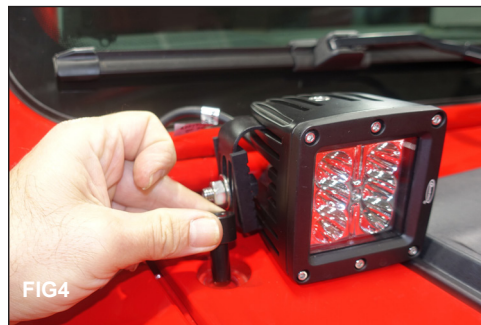
Put on safety glasses. (FIG 1) Using a 3/8" box wrench unscrew the antenna.



(FIG2) Using a T50 Torx bit socket remove the windshield hinge screw.



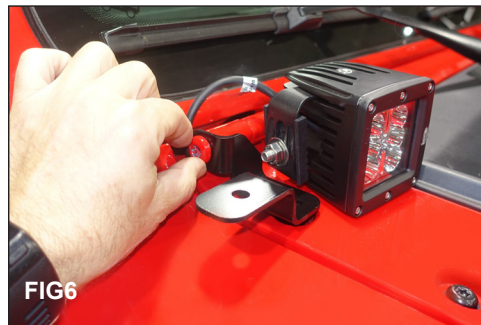
(FIG3) Using a T40 Torx bit socket remove the 4 Cowl mounting screws and carefully remove the Cowl. (FIG4) Run the wiring for the cube lights then re-install the Cowl. Using a T40 Torx bit socket loosely install 3 of the Cowl mounting screws.



Insert the 19 x 34.2mm step spacer into the Cowl mount hole closest to the windshield hinge.



(FIG5) Using a 4mm hex bit driver loosely install the M6 X 1 X 50 Cap Screw and M6 washer.



(FIG6) Using a T50 Torx bit socket re-install the windshield hinge screw. Tighten all hardware to 6ft-lbs.

NOTICE

ALWAYS CHECK LIGHTING FUNCTIONS AFTER INSTALLATION. DO NOT DRIVE ON PUBLIC ROADS WITH COWL LIGHTS ON AS THIS IS ILLEGAL IN SOME STATES AND JURISDICTIONS.

Quadratec
The Jeep® Experts

Quadratec® Exclusive Three Year Limited Warranty

Your Quadratec® branded accessories are covered by the following Limited Warranty provided exclusively by Quadratec, Inc., 1028 Saunders Lane, West Chester PA 19380.

This Limited Warranty is the only warranty made in connection with your purchase. Quadratec neither assumes nor authorizes any vendor, retailer or other person or entity to assume for it any other obligation or liability in connection with this product or Limited Warranty. This Limited Warranty does not apply and is not cumulative to any accessory or part distributed by Quadratec for which the Manufacturer provides a separate written warranty.

What is Covered: Subject to the terms, exclusions and limitations herein and with respect only to Quadratec branded accessories first sold in the United States, Quadratec warrants to the initial retail purchaser only that your Quadratec accessory shall be free of defects in material and workmanship: for a period of three (3) years from date of retail purchase.

This Limited Warranty is not assignable and shall terminate upon sale of the vehicle upon which the Quadratec accessory is installed or other transfer third persons.

All other warranties are hereby disclaimed, except to the extent prohibited by applicable law in which case any implied warranty of merchantability or fitness for a particular purpose on this product is limited to 3 year from date of initial retail sale. Quadratec reserves the rights to: (a.) require invoice or other proof your accessory is within the terms of this Limited Warranty as a condition of warranty service and, (b.) make future revisions to this product and Limited Warranty without prior notice or obligation to upgrade your product.

What is Not Covered:

Your Quadratec Limited Warranty does not cover products or parts Quadratec determines to have been damaged by or subjected to:(a.)

installation damage, alteration, modification, combination with other parts, failure to maintain or improper repair or service, (b.) normal wear & tear, cosmetic damage or damage from moisture or water immersion, (c.) Acts of God, accidents, misuse, negligence, inadequate mounting or impact with vehicle(s), obstacles or other aspects of the environment, (d.) theft, vandalism or other intentional damage.

Remedy Limited to Repair/Replacement:

The exclusive remedy provided hereunder shall, upon Quadratec inspection and at Quadratec's option, be either repair or replacement of product or parts (new or refurbished) covered under this Limited Warranty. Customers requesting warranty consideration should first contact Quadratec to obtain a RGA number (610-701-3336). All labor, removal, shipping and installation costs are customer's responsibility.

Other Limitations - Exclusion of Damages - Your Rights Under State Law:

In consideration of the purchase price paid, neither Quadratec nor any independent Quadratec distributor/licensee are responsible for any time loss, rental costs, or for any incidental, consequential, punitive or other damages you may have or incur in connection with any part or product purchased. Your exclusive remedy hereunder for covered parts is repair/replacement as described above.

This Limited Warranty gives you specific rights. You may also have other rights that vary from state to state. For example, some states do not allow limitations of how long an implied warranty lasts and /or do not allow the exclusion or limitation of incidental or consequential damages, so the limitations and exclusions herein may not apply to you.

©Quadratec, Inc. 2019. All Rights Reserved.

9.21.20 A4 Version

Part #12999.3191

Quadratec®
The Jeep® Experts