



www.skyjacker.com

2007- 2017 Jeep Wrangler JK 2 Door / 4 Door 3.5"- 4" Suspension Lift Installation Instructions

Required Tools List:

- Safety Glasses
- Metric / Standard Sockets & Wrenches
- Hex Key Wrenches
- Drill & Assorted Drill Bits
- Floor Jack
- Jack Stands
- Measuring Tape
- Torque Wrench



Before beginning the installation, read these instructions & the enclosed driver's WARNING NOTICE thoroughly & completely. Also affix the WARNING decal in the passenger compartment in clear view of all occupants. Please refer to the Parts List to insure that all parts & hardware are received prior to disassembly of the vehicle. If any parts are found to be missing, contact SKYJACKER® Customer Service at 318-388-0816 to obtain the needed items. If you have any questions or reservations about installing this product, contact SKYJACKER® Technical Assistance at 318-388-0816.

Make sure you park the vehicle on a level concrete or asphalt surface. Many times a vehicle is not level (side-to-side) from the factory, but usually not noticed until a lift kit has been installed which makes the difference more visible. Using a measuring tape, measure the front & rear (both sides) from the ground up to the center of the fender opening above the axle. Record this information below for future reference.

Driver Side Front: _____

Passenger Side Front: _____

Driver Side Rear: _____

Passenger Side Rear: _____

Important Notes:

- The draglink must be adjusted to center the steering wheel before the vehicle is driven. Failure to do so will cause computer errors, odd handling characteristics, & poor performance.
- If larger tires (10% more than the OEM diameter) are installed, speedometer recalibration will be necessary. Contact your local Jeep dealer or an authorized dealer for details.
- After installation, a qualified alignment facility is required to align the vehicle to the OEM specifications.

Component Box Breakdown:

Part #: JK350BPBSR / JK350BPHSR / JK350BPMSR / JK350BPNSR / JK40BPBSR / JK40BPHSR / JK40BPNSR / JK400BPMSR

Item #	Description	Qty	Item #	Description	Qty
JK25FS-SR	JK FRONT COIL SPRING (Included With JK350 Kit)	2	B8567 (Rear)	BLACK MAX SHCK W/BLK BOOT (Included With 4" BPB Kits)	2
JK40FS-SR	JK FRONT COIL SPRING (Included With JK40 Kit)	2	H7037 (Rear)	HYDRO SHOCK W/RED BOOT (Included With 3.5" BPH Kits)	2
JK25RS-SR	JK REAR COIL SPRING (Included With JK350 Kit)	2	H7065 (Front)	HYDRO SHOCK W/RED BOOT (Included With BPH Kits)	2
JK40RS-SR	JK REAR COIL SPRING (Included With JK40 Kit)	2	H7067 (Rear)	HYDRO SHOCK W/RED BOOT (Included With 4" BPH Kits)	2
CAM700	JK CAM BOLTS	2	M9537 (Rear)	MONOTUBE SHOCK (Included With 3.5" BPM Kits)	2
JK40RBS-S	JK REAR BUMP STOP BRACKET	2	M9565 (Front)	MONOTUBE SHOCK (Included With BPM Kits)	2
ABSS2535	JK FRONT BUMP STOP SPACER	2	M9567 (Rear)	MONOTUBE SHOCK (Included With 4" BPM Kits)	2
JKBRC15	JK REAR TRACK BAR BRACE	1	N8037 (Rear)	NITRO SHOCK W/RED BOOT (Included With 3.5" BPN Kits)	2
JKFTBA717	JK ADJUST FRONT TRACK BAR	1	N8065 (Front)	NITRO SHOCK W/RED BOOT (Included With BPN Kits)	2
JK24RTB-B	JK REAR TRACK BAR BRACKET	1	N8067 (Rear)	NITRO SHOCK W/RED BOOT (Included With 4" BPN Kits)	2
SBE502	JK REAR SWAY BAR END LINKS	1			
HB-JK40BP	HDWR BAG: JK3540BP	1			
HB-JK4BL	HDWR BAG: BRAKE LINE BRKT	1			
I-JK3540BP	INST SHT: 3.5-4" JK W/O LINKS	1			
B8537 (Rear)	BLACK MAX SHCK W/BLK BOOT (Included With 3.5" BPB Kits)	2			
B8565 (Front)	BLACK MAX SHCK W/BLK BOOT (Included With BPB Kits)	2			

Part # JKBRC15

Item #	Description	Qty	Item #	Description	Qty
JKBRC15-B	JK REAR TRK BAR BRACE	1	HB-JKBRC15	HDWR BAG: JKBRC15	1

Part # JKFTBA717

Item #	Description	Qty	Item #	Description	Qty
JKFTBA10-B	JK FRONT ADJUST TRACK BAR	1	34RFTJN	3/4" RIGHT HAND JAM NUT	1
RR34X14RB	3/4"RH ROD END W/14MM BUSH	1			

Part # SBE502

Item #	Description	Qty	Item #	Description	Qty
SBE502-L	REAR SWAY BAR END LINK	2	HB-SBE502	HDWR BAG: SBE502	1

Hardware Bag Breakdown:

Part # HB-SBE502

Item #	Description	Qty
403712	ES22 SLEEVE / 1.25" LONG	4
12X212BHCTB	1/2 X 2 1/2 BUTTON HEAD BOLT	4
12SAEW	1/2 SAE WASHER	4

Item #	Description	Qty
12USSW	1/2 USS WASHER	4
12CTN	1/2 COARSE THREAD LOCK NUT	4

Part # HB-JK40BP

Item #	Description	Qty
12X114FTB	1/2 X 1 1/4 FINE THREAD BOLT	1
12SAEW	1/2 SAE WASHER	1
12FTN	1/2 FINE THREAD LOCK NUT	1
38X4BHB	3/8 X 4 BUTTON HEAD BOLT	2
38SAEW	3/8 SAE WASHER	2
38CTN	3/8 COARSE THREAD LOCK NUT	2
516X1FTB	5/16 X 1 FINE THREAD BOLT	4
516SAEW	5/16 SAE WASHER	8
516FTN	5/16 FINE THREAD LOCK NUT	4

Item #	Description	Qty
716X1FTB	7/16 X 1 FINE THREAD BOLT	1
716SAEW	7/16 SAE WASHER	1
716FTN	7/16 FINE THREAD LOCK NUT	1
916X3FTB	9/16 X 3 FINE THREAD BOLT	1
916X312FTB	9/16 X 3 1/2 FINE THREAD BOLT	1
916SAEW	9/16 SAE WASHER	4
916FTN	9/16 FINE THREAD LOCK NUT	2
CS1625	CRUSH SLEEVE / JKRTB	1

Part # HB-JK4BL

Item #	Description	Qty
JKBE4D	BRAKE LINE BRACKET	2
14X1FTB	1/4 X 1 FINE THREAD BOLT	2

Item #	Description	Qty
14SAEW	1/4 SAE WASHER	4
14FTN	1/4 FINE THREAD LOCK NUT	2

Part # HB-JKBRC15

Item #	Description	Qty
516X1CTB	5/16 X 1 COARSE THREAD BOLT	3
516XTFW	5/16 EXTRA THICK FLAT WASH	3

Item #	Description	Qty
516LW	5/16 LOCK WASHER	3

Front Installation:

1. With the vehicle on flat level ground, set the emergency brake, & block the rear tires / wheels.
2. Raise the front of the vehicle & support the frame rails using jack stands.
3. Remove the front tires / wheels.
4. Remove the OEM front sway bar end links using a 18mm socket / wrench & 19mm socket / wrench. **Note:** Save the OEM hardware. It will be reused later for Step # 25 of this installation.
5. Remove the OEM front track bar using a 21mm socket / wrench. (See Photo # 1)
6. If installing a Skyjacker Steering Stabilizer (Part # 7003), Remove the OEM steering stabilizer using a 18mm socket / wrench. (See Photo # 2)
7. Remove the OEM front shocks using a 18mm socket / wrench.
8. Mark the location of the OEM front driveshaft & yoke, then remove the front driveshaft using a 15mm socket / wrench.
9. Lower the front differential & remove the OEM front coil springs. (See Photo # 3)
10. Place the new Skyjacker front bump stop spacers on the center of each OEM bump stop pad located on the front axle. Mark & drill using a 25/64" drill bit. (See Photo # 4)
11. Install the new Skyjacker front coil springs & new Skyjacker front bump stop spacers using the supplied 3/8" x 4" button head bolts, washers, nuts, a 7/32" hex key & a 9/16" socket / wrench. (See Photo # 5)
12. Raise the front differential in order to load the new Skyjacker front coil springs & install the OEM front driveshaft using the OEM hardware & a 15mm socket / wrench.



Photo # 1



Photo # 2



Photo # 3



Photo # 4



Photo # 5

13. If installing a Skyjacker steering stabilizer (Part # 7003), install it at this time. (See Photo # 6)

14. Install the new Skyjacker front shocks using the supplied hardware, OEM hardware, & a 18mm socket / wrench. (See Photo # 7)



Photo # 6

15. Install the front tires / wheels & lower the vehicle to the ground.

16. Install the fixed end of the new Skyjacker adjustable front track bar to the upper track bar mounting location using the OEM hardware & a 21mm socket / wrench. **Do not tighten at this time.** (See Photo # 8)

17. Using a measuring tape, check the vehicle to make sure the body is centered over the front tires / wheels & adjust the new Skyjacker rod end to align with the lower track bar mounting location.



Photo # 7

18. Install the adjustable end of the new Skyjacker adjustable front track bar to the lower track bar mounting location using the OEM hardware & a 21mm socket / wrench. **Do not tighten at this time.** (See Photo # 9)



Photo # 8

19. Tighten the OEM upper & lower track bar mounting hardware using a 21mm socket / wrench.

20. Tighten the jam nut of the new Skyjacker rod end using an adjustable wrench.

Rear Installation:

21. Block the front tires / wheels, raise the rear of the vehicle, & properly support the frame rails using jack stands.

22. Remove the rear tires / wheels.

23. Remove the OEM rear shocks using a 16mm socket / wrench & 18mm socket / wrench. (See Photo # 10)



Photo # 10



Photo # 9

24. Disconnect the OEM rear track bar from the rear axle using a 21mm socket / wrench. (See Photo # 11)

25. Remove the OEM rear sway bar end links using a 18mm socket / wrench & 19mm socket / wrench. Relocate the OEM rear sway bar end links to the front of the vehicle using the OEM hardware saved from Step # 4 & a 18mm socket / wrench & 19mm socket / wrench. **Note:** Double disconnect front sway bar end links are available separately (Part # SBE126).

26. Disconnect the OEM ABS line & brake line from the frame using a 10mm socket / wrench. (See Photo # 12)

27. Lower the rear differential & remove the OEM rear coil springs.

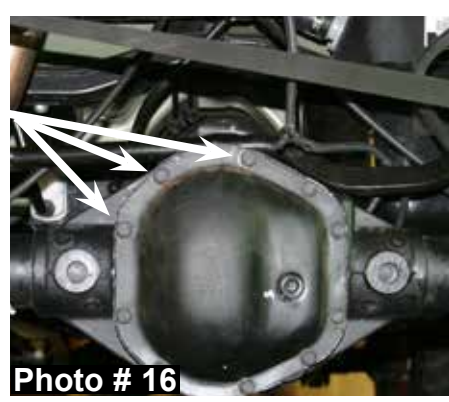
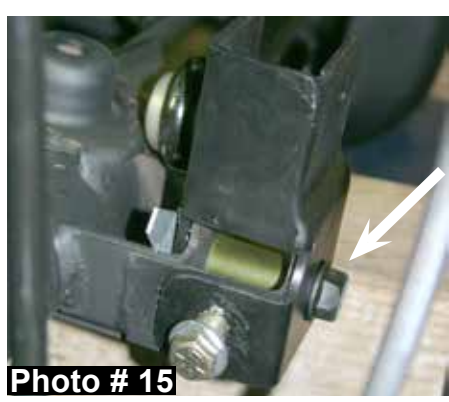
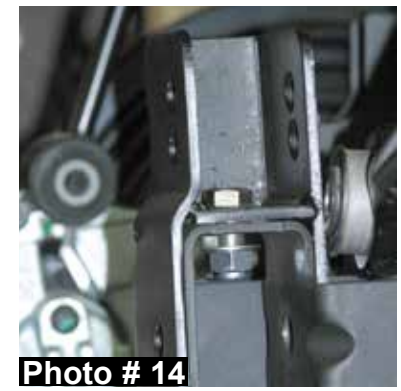
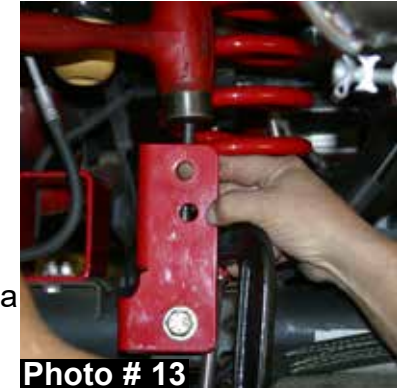
28. Install the new Skyjacker rear coil springs.

29. Place the new Skyjacker rear track bar relocation bracket over the OEM bracket on the rear axle. With the new rear track bar bracket seated flush, clamp the bracket in place, mark with a center punch, & drill the new center mounting hole using a 15/32" drill bit. (See Photo # 13)

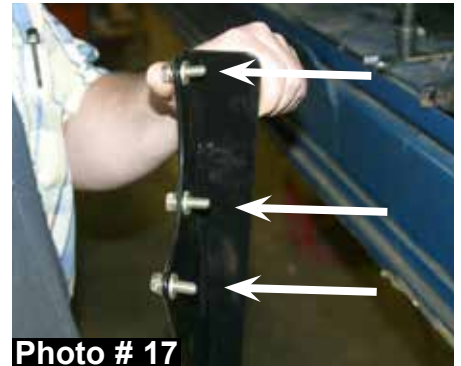
30. Once drilled, install the supplied 7/16" x 1" fine thread bolt, washer, & nut using a 5/8" socket / wrench. (See Photo # 14)

31. Mark, center punch, & drill through the driver side bottom of the OEM bracket & through the new Skyjacker bracket using a 17/32" drill bit. Install the supplied 1/2" x 1 1/4" fine thread bolt, washer, & nut using a 3/4" socket / wrench. Install the supplied crush sleeve, 9/16" x 3 1/2" bolt, washers, & nut at the bottom location using a 13/16" socket / wrench. (See Arrow in Photo # 15)

32. Remove the three OEM upper left rear differential cover bolts using a 1/2" socket / wrench. (See Photo # 16)



33. Attach the new Skyjacker track bar brace to the rear differential using the supplied 5/16" x 1" coarse thread bolts, 5/16" extra thick flat washers, 5/16" lock washers, & a 1/2" socket / wrench. **Do not tighten at this time.** The end of the new track bar brace should be between the new track bar bracket & the new coil spring. **Note:** Use the 5/16" extra thick flat washers between the new track bar brace & the rear differential cover. Use the 5/16" lock washers under the head of each 5/16" bolt. (See Photo # 17 & # 18) **Do not tighten at this time.**



34. Attach the OEM rear track bar & the end of the new Skyjacker track bar brace to the upper mounting location of the new Skyjacker track bar bracket using the supplied 9/16" x 3" fine thread bolt, washers, & nut. Tighten the supplied 5/16" bolts at the rear differential using a 1/2" socket / wrench & the supplied 9/16" x 3" bolt on the track bar using a 13/16" socket / wrench. (See Photo # 19)



35. Attach the new Skyjacker rear bump stop spacers to the OEM locations on the rear axle using the supplied 5/16" x 1" fine thread bolts, washers, nuts, & a 1/2" socket / wrench. (See Photo # 20) **Note:** Be sure to install the new bump stop spacers so the angled end is towards the rear of the vehicle.



36. Raise the rear differential in order to load the new Skyjacker rear coil springs & install the new Skyjacker rear sway bar end links using the supplied steel sleeves, 1/2" x 2 1/2" button head bolts, washers, nuts, a 5/16" hex key, & a 3/4" socket / wrench. **Note:** If using an OEM wheel, the upper end link bolt will need to be installed from the outside in for wheel clearance. Use the large 1/2" USS washer under the head of each bolt & the 1/2" SAE washer under each nut. (See Photo # 20)

37. Install the new Skyjacker brake line brackets to the frame using the OEM hardware & a 10mm socket / wrench. Attach each OEM brake line to the new brake line brackets using the supplied 1/4" x 1" fine thread bolts, washers, nuts, & a 7/16" socket / wrench. (See Photo # 21)



38. Install the new Skyjacker rear shocks using the OEM hardware, & a 16mm socket / wrench & 18mm socket / wrench. (See Photo # 22)

39. Install the rear tires / wheels & lower the vehicle to the ground.

Front Lower & Rear Upper Cam Bolt Installation:

40. One at a time, remove each OEM front lower & rear upper control arm from the front & rear axles using a 21mm socket / wrench.

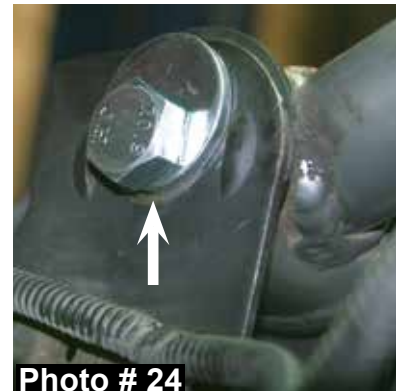
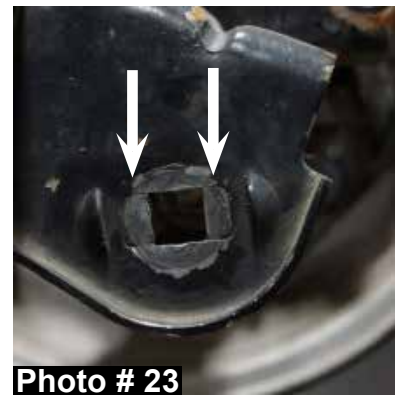
41. The OEM mounting brackets are scribed so they can be made a slotted hole. Knock out these notches on the front & rear half of the holes on each side of the OEM mounting brackets. (See Arrows in Photo # 23)

42. One at a time, install each OEM front lower & rear upper control arm to the front & rear axle using the new Skyjacker eccentric cam bolts, eccentric washers, nuts, a 21mm socket / wrench, & a 22mm socket / wrench. (See Photo # 24)

43. With the vehicle on the ground & the weight of the vehicle on the tires / wheels, tighten the new Skyjacker eccentric cam bolts using a 21mm socket / wrench & a 22mm socket / wrench. **Note:** These new eccentric cam bolts can be rotated forward or backward for caster adjustment & to adjust the axle pinion angle to eliminate driveline vibrations.

Final Notes:

- After the installation is complete, double check that all nuts & bolts are tight. Refer to the following chart for the proper torque specifications. (Do not retighten the nuts & bolts where thread lock compound was used.)
- With the vehicle placed on the ground, cycle the steering lock to lock & inspect the steering, suspension, brake lines, front & rear drivelines, fuel lines, & wiring harnesses for proper operation, tightness, & adequate clearance.
- Have the headlights readjusted to the proper settings.
- Have a qualified alignment center align the vehicle to the OEM specifications.
- After the first 100 miles, check all hardware for the proper torque & periodically thereafter.



TORQUE SPECIFICATIONS

<u>INCH SYSTEM</u>			<u>METRIC SYSTEM</u>		
Bolt Size	Grade 5	Grade 8	Bolt Size	Class 8.8	Class 10.9
5/16	15 FT LB	20 FT LB	6MM	5 FT LB	9 FT LB
3/8	30 FT LB	35 FT LB	8MM	18 FT LB	23 FT LB
7/16	45 FT LB	60 FT LB	10MM	32 FT LB	45 FT LB
1/2	65 FT LB	90 FT LB	12MM	55 FT LB	75 FT LB
9/16	95 FT LB	130 FTLB	14MM	85 FT LB	120 FT LB
5/8	135 FT LB	175 FT LB	16MM	130 FT LB	165 FT LB
3/4	185 FT LB	280 FT LB	18MM	170 FT LB	240 FT LB

• The above specifications are not to be used when the bolt is being installed with a bushing.

Seat Belts Save Lives, Please Wear Your Seat Belt.



**Jesus Forgives,
Rocks Don't**

Jesus Christ Died For You.

John 3:16

For God so loved the world that He gave His only Son, so that everyone who believes in Him should not perish, but have everlasting life.
Romans 3:23

For all have sinned; all fall short of God's glorious standard.
Ephesians 2:8

God saved you by his special favor when you believed. And you can't take credit for this; it is a gift from God.
Psalms 18:2

The Lord is my Rock, my fortress, and my savior; my God is my Rock, in whom I find protection. He is my shield, the strength of my salvation, and my stronghold.
Romans 10:9-10

That if you shall confess with thy mouth the Lord Jesus, and shall believe in your heart that God hath raised him from the dead, you shall be saved. For with the heart man believeth unto righteousness; and with the mouth confession is made unto salvation.

Pray This Simple Prayer:

God, I come to You admitting I have sinned against You and I need you to take control of my life. The Bible says anyone who calls on the name of the Lord will be saved. I am calling on You, Jesus. I ask that You come live in my heart and be the Lord over my life today. I do believe You died on the cross for me and came back to life to give me life! Thank You, Lord Jesus for a new life in You!

Now, go and tell somebody about your new life in Jesus, get a Bible, begin to read it, and go to a Bible believing church.

If you would like someone to pray with you, call Kenneth Copeland Ministries anytime at 800-600-7395.

To listen to commercial free Christian radio on the web, go to www.887fm.org

Jesús murió por ti.

Juan 3:16

“Porque tanto amó Dios al mundo, que dio a su Hijo unigénito, para que todo el que cree en él no se pierda, sino que tenga vida eterna.”
Romanos 3:23

“Pues todos han pecado y están privados de la gloria de Dios.”
Efesios 2:8

“Porque por gracia ustedes han sido salvados mediante la fe; esto no procede de ustedes, sino que es el regalo de Dios.”
Salmos 18:2

“El Señor es mi roca, mi amparo, mi libertador; es mi Dios, el peñasco en que me refugio. Es mi escudo, el poder que me salva, ¡mi más alto escondite!”
Romanos 10:9-10

“9 Que si confi esas con tu boca que Jesús es el Señor, y crees en tu corazón que Dios lo levantó de entre los muertos, serás salvo. 10 Porque con el corazón se cree para ser justificado, pero con la boca se confía esa para ser salvo.”

Ahora dí esta simple oración:

Dios, vengo a Ti y admito que he pecado contra Ti, necesito que tomes el control de mi vida. La Biblia dice que todo aquel que invoca el nombre del Señor escapará con vida. En este momento yo clamo ante Ti, Jesús; te pido que vengas a vivir en mi corazón y que tomes el control de mi vida. ¡Yo creo que tu moriste en la cruz y resucitaste para darme vida! ¡Gracias Señor Jesús, por una nueva vida que tengo en Ti! Amen.

Ahora ve y dile a alguien sobre la nueva vida que tienes en Cristo. Compra una Biblia y empieza a leerla. Busca una Iglesia que cree en la Biblia y hazte parte de esa Iglesia.

Si te gustaría orar con alguien, puedes llamar a este número 800-600-7395

Puedes ir a este sitio de Internet para escuchar música Cristiana sin anuncios, www.887fm.org

Check out our favorite ministries at:

www.innministries.org

www.familychurch.org

www.kcm.org

