

Installation Instructions

2018+ Jeep JL Wrangler and
Jeep JLU Wrangler Unlimited

IS-7689_RevD



Trail Crawler Skid Plate

For proper installation and best possible fit, please read all instructions BEFORE you begin.
For technical assistance or to obtain missing parts, please call Customer Relations at 1-800-328-2409.

Important Safety Information



- CAUTION - Before driving, ensure that the bumper is properly secured to vehicle.
- Periodically check all components for tightness.

Contents

NOTE: Actual product may vary from illustration.



Trail Crawler
Lighted Skid Plate



8mm x 30mm
Allen Bolt (4)



8mm x 30mm O.D.
Flat Washer (4)



8mm Rivet
Nut (4)

Rivet Nut Installation Tool



Rivet Nut Install
Bolt (1)



Flat Washer (1)



Nut (1)



20" LED Light Bar



Wiring Harness with
Switch and Relay



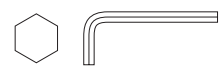
6mm x 16mm Allen
Bolt (2)



6mm Lock
Washer (2)



6mm Flat
Washer (2)



Allen Wrench

Tools Required



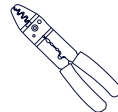
Socket
Wrench



Socket Set



Wrench Set



Crimps



Safety glasses

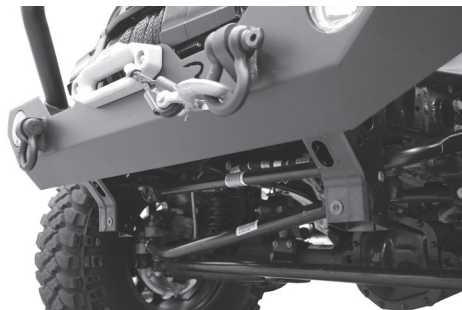
Installation

1

Remove any existing front skid plate on the vehicle, including the factory plastic skid plate.

See Figure 1

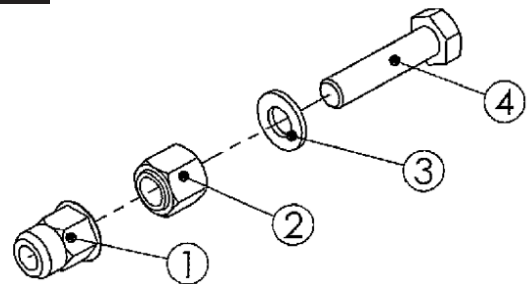
Figure 1



2

Assemble the Rivet Nut Tool as shown in Figure 2. #1 is the Rivnut.

Figure 2



3

Using the Rivet Nut Tool, insert the rivet nut into the hexagonal hole on the side of the frame bracket. Make sure the lip of the rivet nut is flat against the bracket.

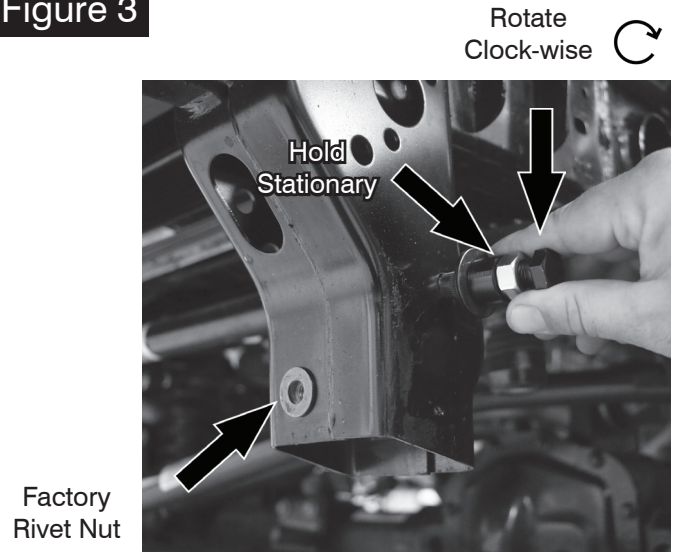
To compress the rivet nut, securely hold the nut while rotating the bolt clock-wise

NOTE: Most Jeep JL Wranglers have a pre-installed rivet nut on the front of the frame bracket. If your vehicle does not have these, additional Rivet Nuts have been provided.

See Figure 3

Repeat on opposite side.

Figure 3

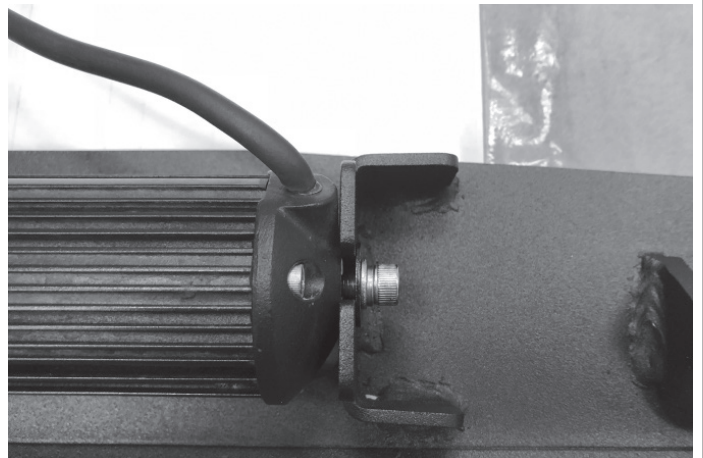


4

Install the provided 20" light bar using the provided 6mm Hardware.

See Figure 4

Figure 4



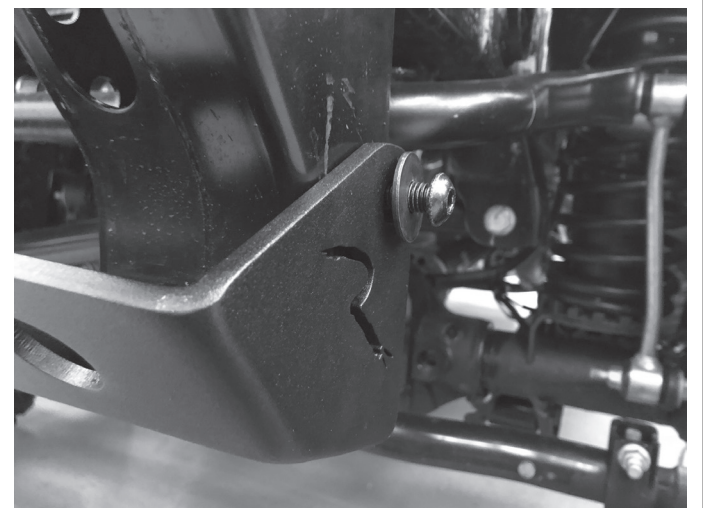
5

Install the Trail Crawler Lighted Skid Plate Assembly onto the vehicle using the provided Button Head Allen Bolts and Flat Washers on the side of the frame brackets.

Do not tighten hardware at this time.

See Figure 5

Figure 5



6

Place a flat washer into the front mounting point on the skid plate. Then insert the button head bolt.

Do not tighten hardware at this time.

See Figure 6 and 7

Figure 6



Figure 7



7

Check clearances around the Trail Crawler Lighted Skid plate to make sure there is no interference.

Tighten all hardware.

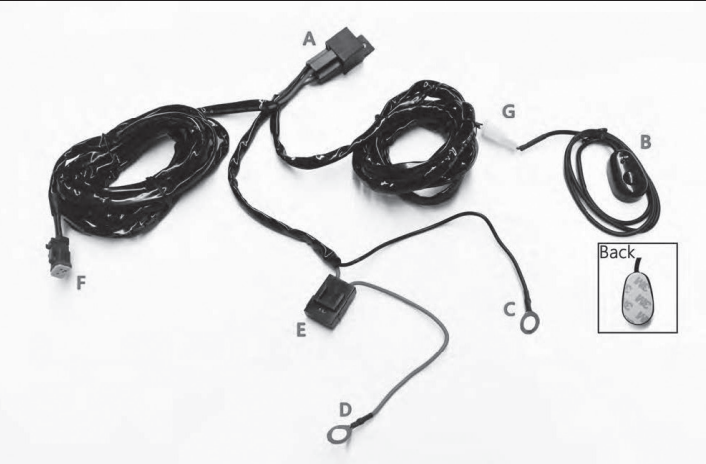
Figure 8



8

Wiring Information

A	Relay
B	Lighted On Switch
C	Main Ground Lead
D	Main Power Lead
E	30 AMP Fuse
F	Duetsch Connector
G	Universal Power Connector



Important Notes

- Off Road Use only! It is the user's responsibility to understand and know their specific state laws and to comply.
- Do not use solvent based cleaners on wires, relays, or connectors.
- Periodically check all connections.
- Do not use wire kit for any other item other than the Rampage Lighted Skid Plate.
- Route and secure all wires to avoid contact with hot or moving parts.
- Light Bar may be operated without vehicle ignition key. Care should be taken to ensure light bar does not remain on for extended periods of time when vehicle is not running and deplete the vehicle battery.

Wiring Installation

1. Disconnect Negative (-) Battery Terminal.
2. Mount Relay [Item A] to secure location away from hot or moving parts.
3. Route 30 Amp Fuse [Item E] to battery and secure wire away from any hot or moving parts.
4. Route switch wire bundle [Item G & B] towards firewall in the area you intend to mount the switch.
5. Disconnect universal power connector [Item G] and route switch wire through firewall away from hot or moving parts.
6. Locate switch inside of vehicle. Switch has 3M adhesive on the back; make sure selected area is clean, oil free, and dry prior to sticking switch to desired surface.
7. Secure all loose wires and re-connect universal power connector [Item G].
8. Connect Main Power Lead [Item D] to Positive (+) Battery Terminal.
9. Connect Main Ground Lead [Item C] to Negative (-) Battery Terminal.
10. Route wire bundle to Light Bar of Bull Bar. Connect Duetsch Connector [Item F] to light in Bull Bar; please note the original wire lead in Bull Bar is no longer needed.
11. Secure all loose wires.
12. Reconnect Negative (-) Battery Terminal.
13. Test light and switch power.

Care and Cleaning

- Rampage products are built to last; any detergent you use to wash your vehicle is sufficient to clean the Skid Plate. Do not use any harsh abrasive detergents. Periodically check tightness of parts.

Congratulations!

You have purchased one of the many quality Rampage branded products offered by Lund International. We take the utmost pride in our products and want you to enjoy years of satisfaction from your investment. We have made every effort to ensure that your product is top quality in terms of fit, durability, finish and ease of installation.



The material that your product is made from can be recycled.
Please also consider recycling the packaging that your product came in.



800-328-2409 • Visit us at Rampageproducts.com
© 2018 Lund Motion Products, Inc. All rights reserved.
Rampage Products™ is a trademark of Lund Motion Products, Inc.

