

T-REX

GRILLES



ZROADZ SERIES GRILLE

MAIN GRILLE - #Z314841

2007-2018 JEEP WRANGLER JK

PARTS ARE PATENT PENDING. ALL RIGHTS RESERVED - COPYRIGHT ©2019 - T-REX TRUCK PRODUCTS, INC.

PARTS INCLUDED

- (1) - ZROADZ Series Main Grille - Part # Z314841
- AND
- (7) - 2' Round ZROADZ 10 Watt LED Lights
- (1) - Single Terminal Universal Wiring Harness
- (1) - 7 Plug Splitter

HARDWARE INCLUDED

- (2) - #10-24 x 5/8" Stainless Steel Hex Head Bolts
- (2) - #10 Washers 9/16"
- (2) - #10-24 Extruded "U" Nuts
- (4) - #8 x 3/4" Stainless Steel Screws
- (4) - #8 Flat Nuts

TOOLS REQUIRED

- Prying Tool
- Various Socket Set
- Various Wrenches
- Ratchet Tool
- Ratchet Extensions
- Clamps
- Tie Wraps
- Blanket or Pad

INSTALLATION GUIDE

BEFORE YOU BEGIN

PLEASE READ AND UNDERSTAND ALL INSTRUCTIONS BEFORE INSTALLATION. Auto makers offer varied models to each vehicle and occasionally manufacture more than one body style of the same model. To assure your part is correct; our tech department can be contacted at tech@trexbillet.com to verify fitment and assist with technical questions. All other inquires can be directed to info@trexbillet.com. In the event you do not have internet access please call 1-800-287-5900.

* APPLICATION MODELS VARY. WE RECOMMEND TO VERIFY FITMENT BEFORE BEGINNING INSTALLATION PROCESS.
* IMAGES FEATURED IN THE INSTRUCTION DOCUMENTS MAY NOT ALWAYS EXACTLY MATCH YOUR MODEL OR PART.

START HERE

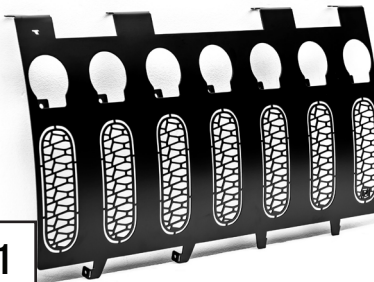
Turn off engine, chalk tires with stop block, open the hood and disconnect the battery.

LED LIGHT BRACKET INSTALLATION

STEP 1

1) Open and unbox the T-REX package. Sort out all components and hardware pack.

FIG 1



STEP 2

2) It is now time to remove the factory grille from the vehicle.

Begin grille removal by prying free all the Push Pin Retainer Clips.

SEE FIGURE 2

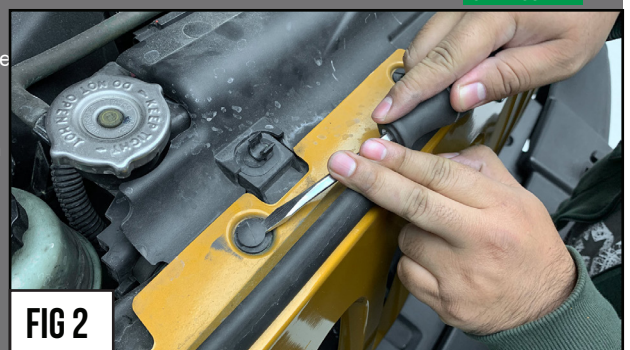


FIG 2

ZROADZ SERIES GRILLE

MAIN GRILLE - #Z314841

2007-2018 JEEP WRANGLER JK

GRILLE REMOVAL - CONTINUED



FIG 3



FIG 4



FIG 5

STEP 3

SEE FIGURE 3

3) Disconnect the harness from the Vehicle's Signal Light.

STEP 4

SEE FIGURES 4 & 5

4) Remove the factory grille from the vehicle. It is secured by (4) clips along the bottom of the grille.

Give it a firm tug by pulling from the bottom working from one side to the other as seen in Figures #4 - #5.

STEP 5

5) Separate and remove installed LED Lights from T-REX Grille. The LED Lights need to be installed from the front side of Jeep Grille.

STEP 6

6) Place the factory grille face down on a soft padded surface.

STEP 7

SEE FIGURE 6

7) Put the new T-REX Grille into place behind the factory grille.

Align the T-REX Grille pre-determined mounting provisions with the factory grille as seen in Figure #6. There are (4) along the top and (4) along the bottom.

At this point, you should secure T-REX Grille in place using clamps.

Flip over to confirm proper alignment with Jeep Grille Pillar openings.

STEP 8

SEE FIGURES 6 - 8

8) Once you are satisfied with the T-REX Grille alignment with the Jeep Grille, secure and mount it in place using the provided Screws & "U" Nuts along the bottom as seen in Figures #6, #7, & #8.

GRILLE ASSEMBLY PROCEDURE

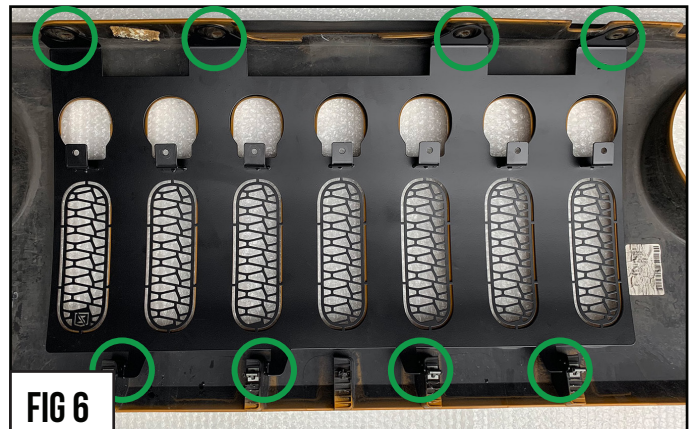


FIG 6



FIG 7

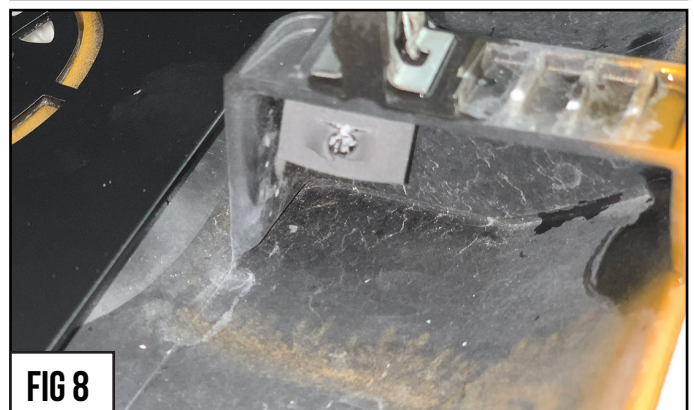


FIG 8

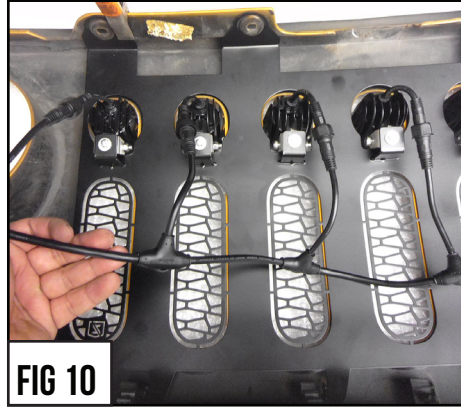
GRILLE ASSEMBLY - CONTINUED

ZROADZ SERIES GRILLE

MAIN GRILLE - #Z314841

2007-2018 JEEP WRANGLER JK

GRILLE ASSEMBLY - CONTINUED



STEP 9

9) Now with the new T-REX Grille mounted, take the (7) LED Lights and slip them into position from the front side of the Jeep Grille. Re-install them on the mounting perch as they were previously removed back in Step 5.

STEP 10

SEE FIGURES 9 - 11

10) You are now ready to connect the provided 7 plug splitter to the LED Lights. Note the location of the vehicles battery, and then start on the opposite side so that the main connector will be closer to the battery.

STEP 11

SEE FIGURES 9 - 11

11) Take the splitter and carefully tie it up so it cannot be seen from the front side through the grille openings. Zip Ties or Tie wraps will help secure out of the way.

STEP 12

12) Check orientation of LED Lights and adjust or point them in according to your preference. This will be difficult once the grille is installed back on vehicle.

STEP 13

GRILLE INSTALL

13) Take the assembled grille component and put into place to install onto vehicle.

Secure the grille to vehicle in the reverse order that is was removed in Step #4 Step #3. Start with the bottom clips first!

STEP 14

14) Finally, Re-connect the signal light plug, and then complete the installation by hooking up the main wiring harness to power LEDs.

GRILLE INSTALL - COMPLETE

STEP 15

INSPECT YOUR WORK

15) Carefully inspect your work and make certain all vehicle panels have been installed and align correctly as factory fitment.

FINISHED EXAMPLES



GRILLE INSTALL - COMPLETE



PARTS ARE PATENT PENDING. ALL RIGHTS RESERVED - COPYRIGHT ©2018 - ZROADZ LED, INC.

ZROADZ PRODUCT WARRANTY

ZROADZ PRODUCT WARRANTY

ZROADZ warrants its grille products to be free from defects in material and workmanship for the lifetime of the grille. ZROADZ warrants the finish of its grille products for a 3 year period beginning at the time of sale to the end user. These warranties are limited warranties and do not cover abuse, modification or improper installation nor do they cover finish failure caused by caustic cleaning agents, road salts or other chemicals. ZROADZ reserves the right to repair or replace a defective product at its sole discretion. Any ZROADZ product must be returned to ZROADZ for warranty consideration and must be returned at the customer's expense. In the event that the product is deemed to be defective, the repaired or replaced item will be returned via a surface shipping method to the customer at ZROADZ expense. No provision is made for any labor, rental car or other costs incurred by the failure of its products.

LED LIGHTING EQUIPMENT INSTALLATION / DISCLAIMER

WARNING

PLEASE CONSULT YOUR LOCAL AUTOMOTIVE ELECTRICAL PROFESSIONAL FOR INSTALLATION SERVICES AND ADVICE. ZROADZ IS ONLY EQUIPPED TO PROVIDE BASIC TECHNICAL ASSISTANCE DUE TO THE DIVERSITY OF VEHICLES, VEHICLE OPTIONS & MODIFICATIONS AND LIGHTING CONFIGURATION OPTIONS AVAILABLE.

ZROADZ cannot be held liable due to improper component installation and / or faulty wiring.

GENERAL GUIDELINES

LED Lights & LED Light Bars operate at relatively high currents and should only be installed by qualified personnel with experience in Switched / relayed high draw DC Circuits.

- Light Bars are designed for use only with standard 12v DC power systems
- Light Bars are for OFF-ROAD USE ONLY. Check your local laws & regulations regarding vehicle mounted lights.
- Some Light Bars are equipped with waterproof connectors while others are simply pig-tailed
- Red Wires = POSITIVE | Black Wires = NEGATIVE
- ALWAYS install your lights on a fused circuit. Basic fusing guidelines: maximum 5A for every 10" of LED Light Bar.

GENERAL USE, INSTALL AND ADJUSTMENT TIPS

NOTE 1: ZROADZ LED Light Bars themselves are for OFF-ROAD USE ONLY.

NOTE 2: Light Bars depending on the configuration of your vehicle and its options and/or modifications may need to be adjusted for appropriate beam projection. To adjust the angle of your light bars simply loosen the mounting hardware on either side of each Light Bar, rotate the Light Bar to adjust the angle, then tighten the hardware once the desired angle is achieved (please be careful not to over-tighten the mounting hardware or scratch the protective powder-coat finish). It is best to adjust the angle with the vehicle on level ground with the lights facing a wall, garage door or other solid barrier at a distance of approximately 25-30 feet.

NOTE 3: Please consult a qualified automotive electrical professional for light bar wiring installation.

NOTE 4: An optional universal wiring harness (part# Z390020S-A) is also available that includes high-heat & oil/fuel resistant wires, waterproof connector, 12v relay, 12v rocker switch, in-line fuse holder. Our universal wiring harness significantly expedites the installation process but is not a vehicles specific "Plug & Play" product and does not eliminate the need for a professional installation.

Please contact your local ZROADZ dealer for more information or visit www.zroadz.com.

PRODUCT CARE INFORMATION

PRODUCT CARE INFORMATION

Wash regularly as you would when caring for your vehicles. Never use dish soap. Never leave wet water spots as that may leave a blemish.

MATTE BLACK FINISH

Paint warranty applies to defects in material and / or workmanship, it does not cover the matte finish surface appearance. To enjoy the matte appearance for many years to come, please follow these owner care and maintenance tips. Get a no-shine matte car wash soap that uses no fillers, no silicone, and won't strip your matte paint of its layer of protection. Do not use wax, detail spray, armorall®, or any products made for normal paint. Use only products specifically developed for matte finish paint. Do not use products that are even mildly abrasive, such as polishes, glazes, or rubbing compounds. Do not use mechanical cleaners or polishers. Do not use terry cloth, cloth, or paper towels. Do not rub the finish vigorously, this will burnish the paint finish, causing a permanent shiny spot. Shiny spots cannot be removed.

Do not use commercial car wash facilities or their shine enhancement products. Most car wash brushes, large mechanized "towels", and shine enhancement products can damage matte paint.

Remove foreign substances such as insect remains, tar, and road debris using a soft applicator and a mild solvent; saturate and soak area before cleaning - rub lightly.

Hand-wash with a soft wash mitt and mild cleaning product safe for matte paint. Use microfiber cleaning cloths with alcohol-based window cleaner for basic surface clean-up.

GLOSS BLACK FINISH

ZROADZ with Gloss Black Powder Coated Finish may be washed regularly as you would when caring for your vehicles finish using soap and water. ZROADZ should be waxed at the same time that you wax the vehicle. As a general rule, anything you use to clean your vehicles painted surfaces can be used to clean and maintain your ZROADZ grille. A Gloss powder Coated Finish can be cared for in the same fashion that you would care for your vehicles factory paint job. Never leave wet water spots as that may leave a blemish.