



# Installation Instructions

## Ironsides Full Top Kits for 76-95 Jeep® Wrangler CJ7/YJ

Item #156111XX



### Hardware Part List:

Bow Assemblies (L&R) - Qty 2  
Windshield Channel - Qty 1  
Side Belt Rail w/Brackets(L&R)- Qty 2  
Corner Belt Rail (L&R) - Qty 2  
Tailgate Retainer Brackets (L&R) - Qty 2  
Bow Connectors - Qty 2  
Side Rail Pin - Qty 4  
Tailgate Bar - Qty 1  
5/16" Torx Bolt - Qty 10  
5/16" Tapping Plates - Qty 10  
5/16" Flat Washers -Qty 10  
#8x1/2" Pan Self Screws - Qty 4  
#8x1/4" Tap Mod Screws - Qty 11  
Front Bracket Mount - Qty 2

(Note: There maybe an extra hardware in package)

### Soft Part List:

Fabric Top - Qty 1  
Quarter Window, Right - Qty 1  
Quarter Window, Left - Qty 1  
Rear Window - Qty 1

### Required Tools:

Safety Glasses  
Phillips Head Screwdriver  
#40 Torx socket and Driver pliers  
Drill  
1/8" Drill Bit (optional)  
3/16" Drill Bit (optional)

### NOTICE

This Complete Soft Top Kit is designed to fit on your CJ7/YJ Wrangler when the hard top or original soft top has been completely removed. Before beginning your installation of this product, carefully remove your hard top or current soft top hardware. During the installation of this product you will encounter several steps that will require two people to properly install the hardware.

### WARNING

Loss of vehicle control involves risk of death or serious injury, particularly to parts of your body not restrained within vehicle. This product is intended for weather protection only and should not be relied upon to contain occupants in the event of an accident or to protect from either ground contact or falling objects. To reduce risk of accident or injury:

- ALWAYS WEAR SEATBELTS
- Always keep head, arms & body parts within vehicle.
- Fully secure or stow the soft top before driving according to instructions. Never try to latch or fold soft top while driving. Do not use if damaged or worn.
- Read and follow all instructions & warnings accompanying this product, in your vehicle owner's manual and Off Road Driving Supplement.

### CAUTION

RISK OF EYE INJURY. Safety glasses should be worn at all times while installing or maintaining this product.



### Important Safety information

Your MasterTop® Complete Soft Top is intended to increase the fair weather enjoyment of your off-road capable vehicle. Before installation, please take a moment to review the following safety information and installation instructions. Important safety information is generally preceded by one of three signal words indicating the relative risk of injury. The signal words mean:

**WARNING**

a hazardous situation which, if not avoided, could result in death or serious injury. You CAN be KILLED or SERIOUSLY HURT if you don't follow instructions.

**CAUTION**

a hazardous situation which, if not avoided, could result in minor or moderate injury. You CAN be moderately HURT and also may suffer property damage if you don't follow instructions.

**NOTICE**

Careful attention is required to this instruction or operation but does generally not relate to personal injury. Damage to your MasterTop® product or other property may result if you don't follow instructions.

### Before you begin Installation:

We are excited that you have chosen the MasterTop Complete Soft top Hardware System. This high quality bow and door surround system is designed to provide a platform for the installation of a fabric soft top. Please note that it is important that you become familiar with the installation process of this top by reading the following instruction sheet and warnings thoroughly.

When unpacking, carefully check to make sure all parts are included. If any part is missing or broken, please call MasterTop customer service at 720-575-5440 and 720-575-9770, or email support@mastertop.com. When unpacking, check to make sure all parts are included..

### Prior to installing the Top :

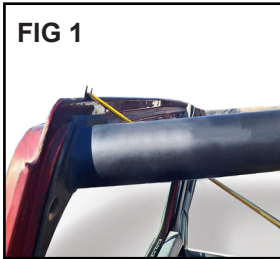


FIG 1



FIG 2

**WARNING**

Verify the windshield measurement. The distance between the top lip of the windshield and the outer edge of the body should be 75 1/8" on both sides of the vehicle. Take this measurement from 4"-6" inside the doors. Figs.1 & 2

### Installation of Soft Top Hardware



FIG 3



FIG 4

### Step 1: Windshield Channel Installation

Put on safety glasses. Position the two piece windshield channel on the vehicle lining up the existing screw holes as shown in Fig 3. Once in place, secure the windshield channel using the included 11 #8 x 1/4" tap mod screws. See Fig 4. Note: If installing the windshield channel to the vehicle for the first time (hard top vehicles) or if the holes do not line up, use the windshield channel as a template to drill 1/8" holes for installation.

**WARNING**

Make sure the Windshield Header and installation bolts are fully secured and tightened. Failure to fully tighten the bolts may cause the header to come off while driving.



FIG 5



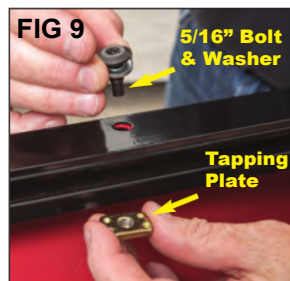
FIG 6

**NOTICE**

"for the best fit on CJ7's without the side bars, you made need a new hood to cowl weatherstrip" fig.5 & 6.



## Installation of Soft Top Hardware



### Step 3: Side Belt Rail Installation

Locate the driver's side Belt Rail assembly. Using a phillip head screw driver, remove the torx screws as shown in fig.7. Place the side Belt Rail assembly over the top of the body tub lining up each hole with the factory holes in the body tub rail. Once the holes are aligned, secure the bracket in place using the 5/16" screw, nut and washer that were removed earlier.

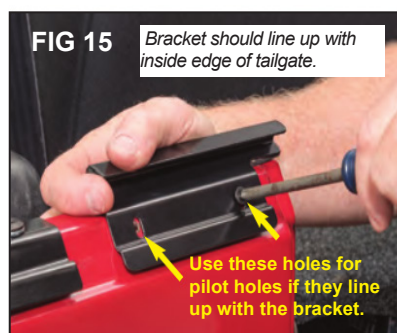
As shown in Figs 9 & 10, secure the side belt rail with the bolt, washer and then the tapping plate under the body tub lip in all four hole locations. Fig. 11

Repeat the above on the passenger side of vehicle.



### Step 4: Corner Belt Rail Installation

Locate the driver's side corner belt rail assembly, (2) 5/16" Torx Bolts, (2) 5/16" Washers and (2) 5/16" Tapping plates. Place the corner Belt Rail assembly over the top of the body tub lining up each hole with the factory holes in the body corner rail. See Fig 12. As shown above in Fig 9, secure the side belt rail with the bolt, washer and then the tapping plate under the body tub lip in all two hole locations. Repeat procedure on the passenger side of vehicle. See Fig 13.



### Step 5a: Tailgate Bracket Installation

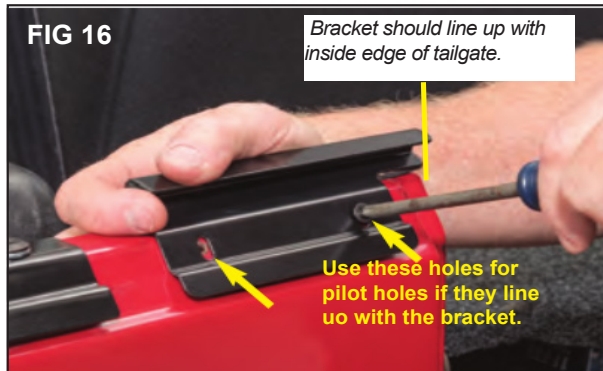
**IF you are replacing current soft top hardware,** locate the passenger and Drivers side Tailgate Brackets, (4) #10 -24x 1/2" Phillips machine screws, included in the brackets.

Take the passenger side tailgate bracket and line it up with the existing holes in the rear of the body tub. If the holes line up, use these holes as pilot holes to drill two (.136") holes. Install the Tailgate bracket using the machine screws, then the star lock washer then the flat washer on the outside of the bracket and the Nylock nut on the inside of the body tub. See Fig 14 & 15. Tighten Tighten and repeat this procedure on the Driver's Side.

**WARNING** Make sure when drilling that all wiring is moved away from the drill site. Failure to move the wiring can cause damage to your vehicles electrical system.



## Installation of Soft Top Hardware

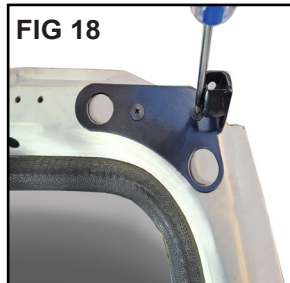


## Step 5b: Tailgate Bracket Installation

**IF you are soft top hardware for the first time,** Locate the passenger and Drivers side Tailgate Brackets, (4) #10 - 24x 1/2" Phillips machine screws included. Take the passenger side tailgate bracket and line it up with the edge of the inside of the tailgate as shown in Fig 16. Using the tailgate bracket as a template, mark and drill two (.0136") holes with a bit size #29. Install the Tailgate bracket using the machinescrews, then the star lock washer then the flat washer on the outside of the bracket and the Nylock nut on the inside of the body tub. Tighten and repeat this procedure on the Driver's Side.

### NOTICE

Make sure when drilling that all wiring is moved away from the drill site. Failure to move the wiring can cause damage to your vehicles electrical system.

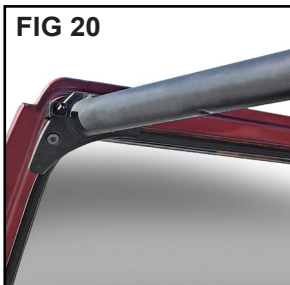


## Step 6: Front Bracket Mount Installation

To install the front bracket mounts start by loosening the visor bolts attached to the windshield:

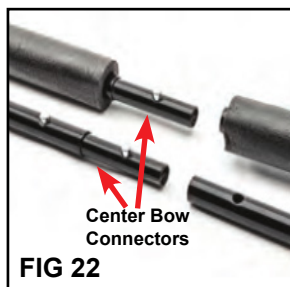
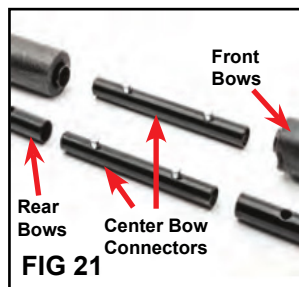
### For CJ-7 Models (1976-1986)

Place the Front Bracket Mounts in the upper corner of the windshield frame with the square protrusion facing the rear of the Jeep. Mark the two smaller holes in the bracket and drill two 1/8" holes. Using the 8 X 1/2 mod truss screws, secure the bracket to the windshield frame. Fig.18



### For YJ Models (1987-1995)

Remove the two torx bolts that attach the roll bar to the windshield frame on both sides of the vehicle. Slide the front bracket mount between the roll bar mount and the windshield frame with the square protrusion facing the rear of the Jeep. Line up the holes and reinstall the OE Torx Bolts. Fig. 19 & 20

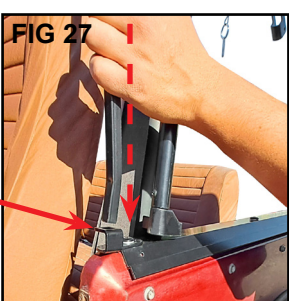
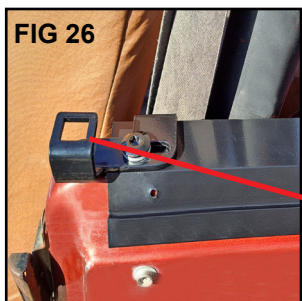
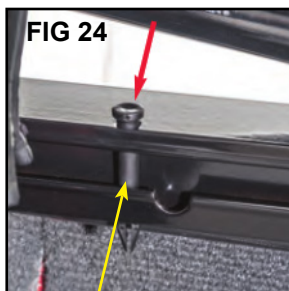


## Step 7: Front and Rear Bow Assembly

Locate the left and right bow assemblies and (2) center bow connectors. Lay the bow assemblies on a soft surface lining up the two assemblies' top and bottom tubes with the bow connectors in-between each bow. See Fig 21. Attach the bow connectors to the center bows lining up the push buttons to the holes in the front and rear bows. Note: It will be helpful to pull back the foam on the front bows to expose the holes in the bows to line up the push buttons. See Fig 22.



**NOTICE** Steps 8 & 9 Will be easier with the help of a second person.



### Step 8: Attach Bows to Side Belt Rails

Slide the ends of the front and rear bow assemblies into the tracks located on the inside of the side belt rails. These ends should be slid in from the rear of the vehicle towards the front of the vehicle and if possible, both driver's and passenger sides should be slid in together to prevent binding. See Fig 23.

Once the bow assemblies are slid into the side belt rail tracks, locate and insert the side rail pin into the pre-drilled hole on the top of the side belt rail. See Fig 24 & 25.

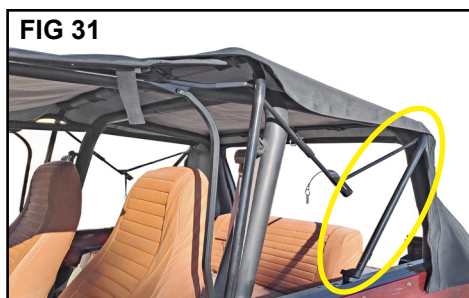
### Step 9: Attach Door Surrounds

Insert the door surrounds into the square openings located on the body rail (see Figs. 26 & 27). Ensure the surrounds are fully seated and properly aligned within the mounting points.

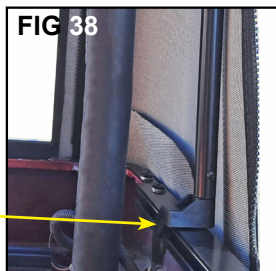
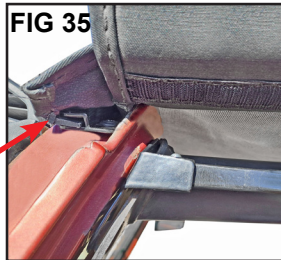
Once positioned, align the upper tube of the bow assembly with the corresponding windshield mount bracket. Engage the tube into the bracket and apply downward pressure until it snaps securely into place. Verify that both sides are fully locked and properly seated. See Figs. 28 & 29.

### Step 10: Position the Top on the Vehicle

Place the soft top fabric on the top of the hardware system. The plastic header should be facing forward and the two rear corners should be facing down. See fig. 30 Push forward the rear bow assembly as shown in fig.31.



## Installation of Soft Top Hardware



### Step 11: Attach New Fabric to Bows

Locate the front and the rear snap straps and snap each to the front and rear bows securing the top to the hardware system. See Figs. 32, 33a & 33b.



### Step 12: Install Top Fabric into the Windshield Channel

Insert the front plastic windshield retainer strip sewn along the front of the top into the Windshield Channel front slot. Do not catch any fabric in the channel. While installing, make sure the top is centered side to side in the channel so that there is an equal distance from the center of the windshield. See Figs 34 & 35.

### Step 13: Install Rear Corners

With the rear bow not completely engaged, install rear corners into the corner belt rails ensuring the clear/white plastic reinforcement are not hooked into the railing. Line up edge of the plastic strip with the edge of the retainer. Repeat on the other side. See Fig.36.

### Step 14: Secure the Rear Bows

Push the bottom of the rear bow back towards the rear of the vehicle until it snaps into place. Make sure the fabric rear corners are still engaged. Note: the first time this is done it will be very tight. See Figs 37 & 38.

### Step 15: Lock Spreader Bars in Place

With the rear bows secured, push up on the spreader bars until they lock into place. Make sure when pushing up on the spreader bars that you go straight up and not up and "inwards" while pushing. Pushing inwards will damage your spreader bars. See Figs 39 & 40.

**WARNING**

Be careful when placing your hands while closing the middle part of the spread bar.





FIG 41

Top Zipper



FIG 42

Side Zipper



FIG 43



FIG 44



FIG 45



FIG 46



FIG 47



FIG 48



FIG 49

### Step 16: Install Side Curtains

Line up and attach the top and side zippers on the side curtains approximately 2-3 inches. Note that the side zipper may not lineup with the corner fabric unless you slide the corner fabric around in the belt rail towards the front of the vehicle.

Once the side zipper is attached and zipped up 2-3 inches, you can slide the corner back around towards the rear of the vehicle and line up the black plastic strip with the edge of the retainer. See step 16 and see Figs 41 & 42.

### Step 17: Insert Side Curtains into Vertical Door Surround Retainer

With the top and side zippers still only partially closed 2-3", wrap the loose flaps around the door surrounds attaching them to the inside of the Soft Top with the hook loop fasteners. Repeat on the opposite side. See Fig 43 & 44.

### Step 18: Attach Side Curtains to Body Belt Rail

While pulling down, slip the side curtain bottom retaining channel into the body belt rail starting from one end and pressing down to the other as shown in Figs 45 & 46.

Completely zip up side curtain Zippers. See Fig 40. Repeat steps nine through eleven on the other side of the vehicle.

### Step 19: Attach the Flap Around the Upper Tube

Wrap the loose flap around the upper tube, attaching it to the inside of the Soft Top with the hook and loop fasteners. figs.48, 49 & 50.



FIG 50

Inside flap





FIG 51



FIG 52

### Step 20: Install the Rear Curtain

Attach the Top Zipper on the rear curtain to the top. Zip across 3-6" only. Attach both side zippers on the rear curtain to the top zipping them down about 3-6". See figs. 51 & 52

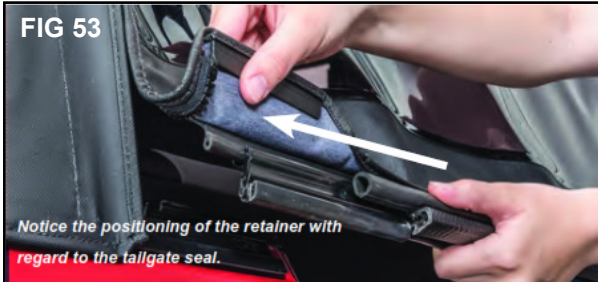


FIG 53

### Step 21: Install Tailgate Retainer

With the rear curtain loosely installed, open the tail gate and slide the rear curtain retainer onto the bottom of the rear curtain. See Fig.53



FIG 54



FIG 55

### Step 22: Securing theRear Tailgate Retainer

With the rear curtain attached, "roll" the rear tailgate bar into the two rear tailgate retainers. Once engaged into the retainers, slip the rear curtain plastic retainers into the bottom of the tailgate retainer channel. zippers closed.

See Figs 54, 55 & 56. Zip the rear curtain top and two side zippers closed.



FIG 56

Your CJ7/YJ Complete Soft Top installation is now complete!



# Care instructions 9

## Care and Maintenance of your MasterTop® Product:

Your MasterTop Complete Soft Top is made of the finest materials available but to keep it looking new and for the maximum possible wear, it will need periodic cleaning and basic maintenance. The main threat to your soft top is pollutants, dirt and grime. By keeping your top clean you will prolong the life of your top.

We recommend the following to keep your top like new:

### Washing:

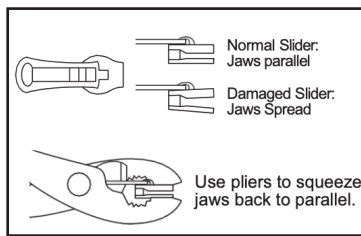
The soft top fabric should be washed often using a mild soap, warm water and a soft bristle brush. You can also use special soft top cleaners available on our Distributors websites. Make sure that after cleaning you rinse with clear water to remove all traces of soap to avoid residue.

### Water/Fabric:

In the event of seeping through the seams, 3M Scotchgard® may be applied on the inside of the seams to stop the seeping. Rips in the fabric may be repaired with Bondex® iron on patches. Iron the patches to the Inside of the top, carefully following the Bondex® instructions.

### Windows:

It is very important that you keep your Soft Top windows clean! Use a mild soap and water solution to gently clean your windows. NEVER wipe your windows clean with a dry cloth! Dust and dirt on a dry cloth can scratch your windows causing "fogging" and permanent damage. When removing your windows, store them with a towel. If frost or ice forms on the outside of your windows during the winter, DO NOT use an ice scraper to remove this frost. Over time you will see small micro scratches in your windows which are natural wear and tear. These Micro scratches can be "polished" out using the window polish available at your MasterTop Distributor.



### Zippers:

Keeping the zipper cleaned and lubricated with a silicone lubricant (available online) will help prevent damage and keep the zippers in a smooth working condition. If zipper opens behind the slider, the slider may have been spread apart. This problem can usually be fixed by using an ordinary pair of pliers to bring the sides back into parallel. Return slider to the end of the zipper in the normal Open position. Squeeze lightly at first and test zipper. If the zipper continues to remain open squeeze more firmly with pliers and try the zipper again. Repeat procedure until your zipper operates correctly.

## For more information on MasterTop:

This and other helpful product information is available on [www.mastertop.com](http://www.mastertop.com)  
Please visit our website frequently for product updates and exciting news.





# Limited 3 Year Warranty

Your MasterTop® accessory is covered by the following Limited Warranty provided exclusively by MasterTop, Inc., 25568 Genesee Trail Rd, Golden, CO 80401.

This Limited Warranty is the only warranty made in connection with your purchase. MasterTop neither assumes nor authorizes any vendor, retailer or other person or entity to assume for it any other obligation or liability in connection with this product or Limited Warranty. This Limited Warranty does not apply and is not cumulative to any accessory or part distributed by any MasterTop distributor for which the Manufacturer provides a separate written warranty.

**What is Covered:** Subject to the terms, exclusions and limitations herein and with respect only to MasterTop branded accessories first sold in the United States, MasterTop warrants to the initial retail purchaser only that your MasterTop accessory shall be free of defects in material and workmanship; **for a period of 3 years from date of initial retail sale.**

All other warranties are hereby disclaimed, except to the extent prohibited by applicable law in which case any implied warranty of merchantability or fitness for a particular purpose on this product is **limited to 3 years from date of initial retail sale.** MasterTop reserves the rights to: (a.) require invoice or other proof your product is within the terms of this Limited Warranty as a condition of warranty service and, (b.) make future revisions to this product and Limited Warranty without prior notice or obligation to upgrade your product.

**What is Not Covered:** Your MasterTop Limited Warranty does not cover products or parts MasterTop determines to have been damaged by or subjected to: (a.) installation damage, alteration, modification, failure to maintain or attempted repair or service by anyone not authorized by MasterTop, (b.) normal wear and tear, cosmetic damage or damage from water immersion, (c.) Acts of God, accidents, misuse, negligence, inadequate mounting or impact with vehicle(s), obstacles or other aspects of the environment, (d.) theft, vandalism or other intentional damage, (e.) fleet, rental or commercial use, (f.) use in competition or racing.

**Remedy Limited to Repair/Replacement:** The exclusive remedy provided hereunder shall, upon MasterTop inspection and at MasterTop's option, be either repair or replacement of product or parts (new or refurbished) covered under this Limited Warranty. Customers requesting warranty consideration on MasterTop Products should first contact MasterTop to obtain a RGA number (720-575-5440). All labor, removal, shipping and installation costs are customer's responsibility.

## Other Limitations - Exclusion of Damages

### - Your Rights Under State Law:

In consideration of the purchase price paid, neither MasterTop nor any independent MasterTop distributor /licensee are responsible for any time loss, rental costs, or for any incidental, consequential, punitive or other damages you may have or incur in connection with any part or product purchased. Your exclusive remedy hereunder for covered parts is repair/replacement as described above.

This Limited Warranty gives you specific rights. You may also have other rights that vary from state to state. For example, some states do not allow limitations of how long an implied warranty lasts and/or do not allow the exclusion or limitation of incidental or consequential damages, so the limitations and exclusions herein may not apply to you.

© MasterTop, Inc. 2023. All Rights Reserved. The terms MasterTop® and MasterTwill® are Registered Trademarks of MasterTop Incorporated, Registered in U.S. Patent and Trademark Office.

[www.MasterTop.com](http://www.MasterTop.com)

Part # 941048.01 Version 2.12.26 AMD

