

INSTALLATION INSTRUCTIONS

⚠ WARNING

To properly install this light you should have a good understanding of electrical procedures and systems. **IF YOU DO NOT, PLEASE SEEK PROFESSIONAL ASSISTANCE.**

BEFORE INSTALLATION:

Estimated Time: 90 minutes

Tools Needed: 5mm Hex Key
15mm Wrench
T20 Torx Wrench
For Wiring:
Heat Gun
Wire Stripper/Crimper

Wire Functions: Black = Ground
Red = Power
Green = Sensitivity Setting
White = Brake Override

In the Box:

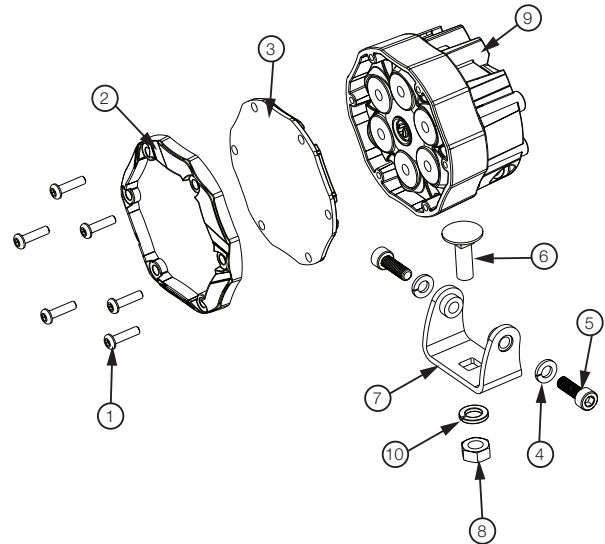
1. (12x) M4 Bezel Screws
2. (2x) Red Outer Bezels
3. (6x) Outer Lens
4. (4x) Lock Washers
5. (4x) 1/4" Bolts
6. (2x) Mounting Bolts
7. (2x) Brackets
8. (2x) Hex Nuts
9. (1x) Trail 6 Flash Parent Light
10. (1x) Trail 6 Flash Child Light
11. (2x) Mounting Washers
12. (1x) Daisy Chain Harness

Input Voltage: 12V DC

Operating Voltage: 9-16V DC

PRE-INSTALLATION INSTRUCTIONS:

1. Read all safety notes and mounting guidelines before installing the product. Verify that all parts listed under "In the Box" are present and complete.
2. Inspect the product for damage. DO NOT install the product if there is any damage. Contact the authorized retailer where you purchased it to initiate a warranty claim if there is damage.
3. Verify that all power supply and/or charging systems comply to the specified voltage limits for the light.



IMPORTANT NOTES:

To properly install this light you should have a good understanding of automotive electrical procedures and systems, and proficiency in the installation of lights. **IF YOU DO NOT, PLEASE SEEK PROFESSIONAL ASSISTANCE.**

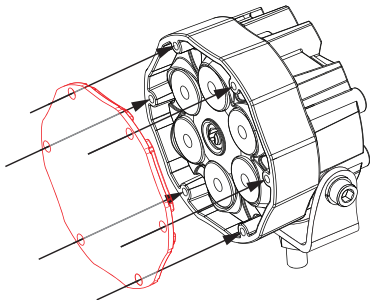
PRODUCT WARRANTY:

If you have issues with a J.W. Speaker product, please contact the authorized retailer where you purchased it.

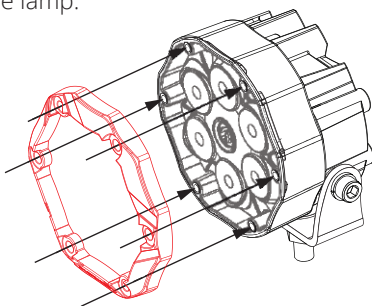
J.W. SPEAKER®
Engineered. Lighting. Solutions.

INSTALLATION INSTRUCTIONS:

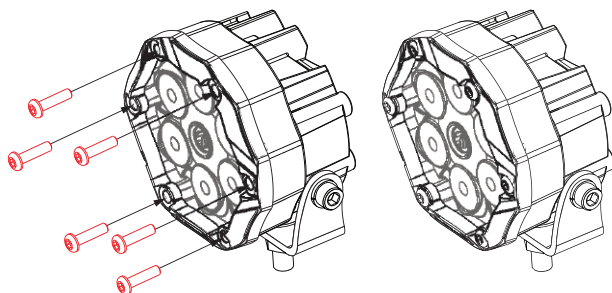
1. First choose between the Spot, Flood, or Wide Flood lens (#3) to install. Lay the lens flat on top of the light.



2. Place the outer bezel (#2) on the lamp over the lens. Be sure the J.W. Speaker logo on the outer bezel is oriented at the bottom of the lamp.



3. Take 6 of the M4 bezel screws (#1), place them in the holes of the outer bezel, and fasten the lens and bezel to the light using the T20 Torx Wrench. Repeat steps 1-3 on the other light.



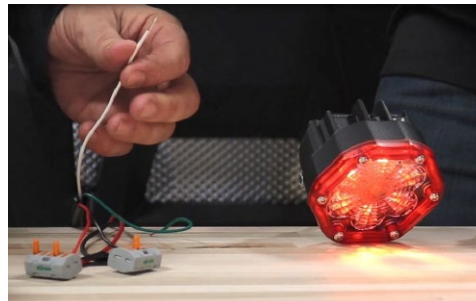
4. The unique daisy chain harness has four wires:
Black = Ground White = Brake Override
Red = Power Green = Sensitivity Setting

The Trail 6 Flash has 3 sensitivity settings: high, medium, and low. **High Sensitivity** for slower vehicles like a tractor, and **Low Sensitivity** for faster vehicles like a UTV to prevent false flashes.

5. To set the sensitivity, ground the green wire before giving power to the Trail 6 Flash lights. Then connect the red wire to a power source and you will see the parent lamp start to flash.



6. The parent lamp has a single flash x 5 times for low sensitivity, 2 flashes x 5 times for medium sensitivity, and 3 flashes x 5 times for highest sensitivity. Once it is at the sensitivity you want disconnect the green wire and it will save that setting to the lamp. Cap the green wire.



OPTIONAL: Splice the white **Brake Override** wire with your brake wire. This will cause the Trail 6 Flash to work with your brakes. **If unused, cap the white wire.**

7. Once assembled, attach the light as a bracket, hanging, or panel mount to the vehicle. For hanging or bracket option: Insert the mounting bolt (#6) through the bracket, add a washer (#10) to the bolt under the bracket, then tighten a hex nut (#8) to the bolt.



12. Aim the Trail 6 as desired and fasten the side bolts (#5) using 5mm Hex Key. Plug in the provided daisy chain harness into the back of the lamp.



13. Test to make sure the light is working. Now you're ready to hit the trails!

J.W. SPEAKER
Engineered. Lighting. Solutions.