

Radio Installation Continued

9. Rest the New Radio/Dash Kit on the heater vents between the Dash and the Dash Trim Panel.

10. Plug the Gray 22 Pin Connector to the Jeeps corresponding Wiring Harness as shown in picture #10.

11. Tuck the Digital Adaptor Box into the Left Corner of the Dash cavity as shown in picture #11. This will allow room for the New Radio to slide into the Dash.

12. Slide New Radio into the Dash making sure that all Antenna Cables are accessible on top of the Radio as shown in picture #12. Partially install one of the screws to hold Radio in place

13. Connect the White Antenna Plug into the Black Antenna Cable coming from the New Radio as shown in picture #13. If you also have a Yellow Connector it will not be used.

14. Carefully tuck the Antenna Wires back into the Dash as shown in picture #14.

15. Before going any further, test the New Radio.

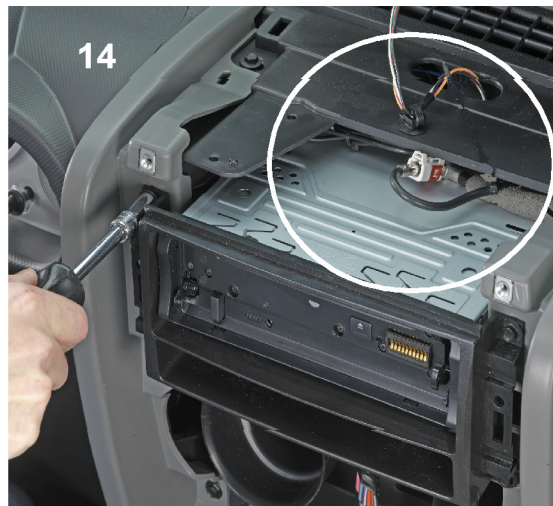
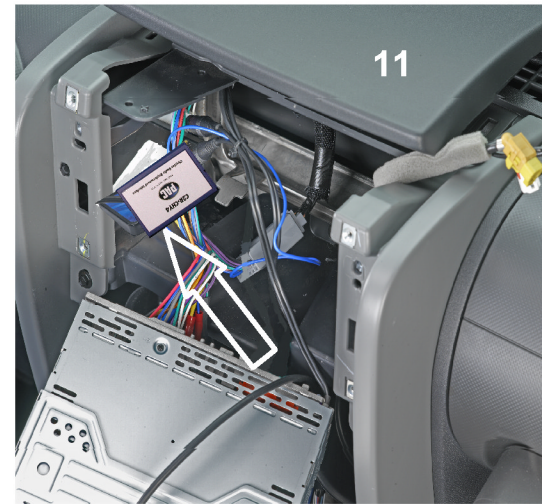
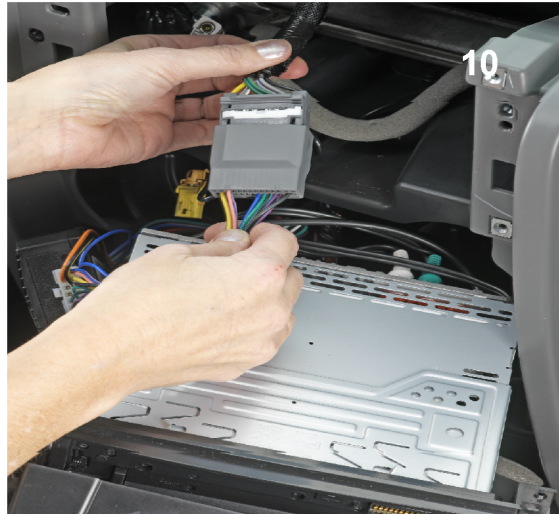
A. Install Radio Faceplate.

B. Turn on ignition key and verify that the Radio lights up.

C. Turn Radio on and tune in a station.

D. Adjust the volume up and down and check Radio for proper operation.

16. Install the remaining 3 screws for the Radio and reinstall the Dash.



WARNING : This product can expose you to chemicals including vinyl chloride and lead, which is known to the state of California to cause cancer and birth defects or other reproductive harm.

For more information go to www.P65Warnings.ca.gov