



DESTROYER SERIES

JK ROCK RAILS

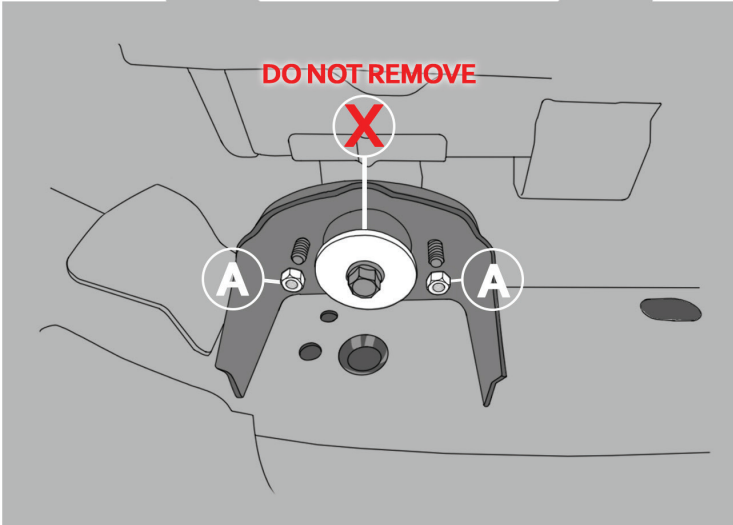
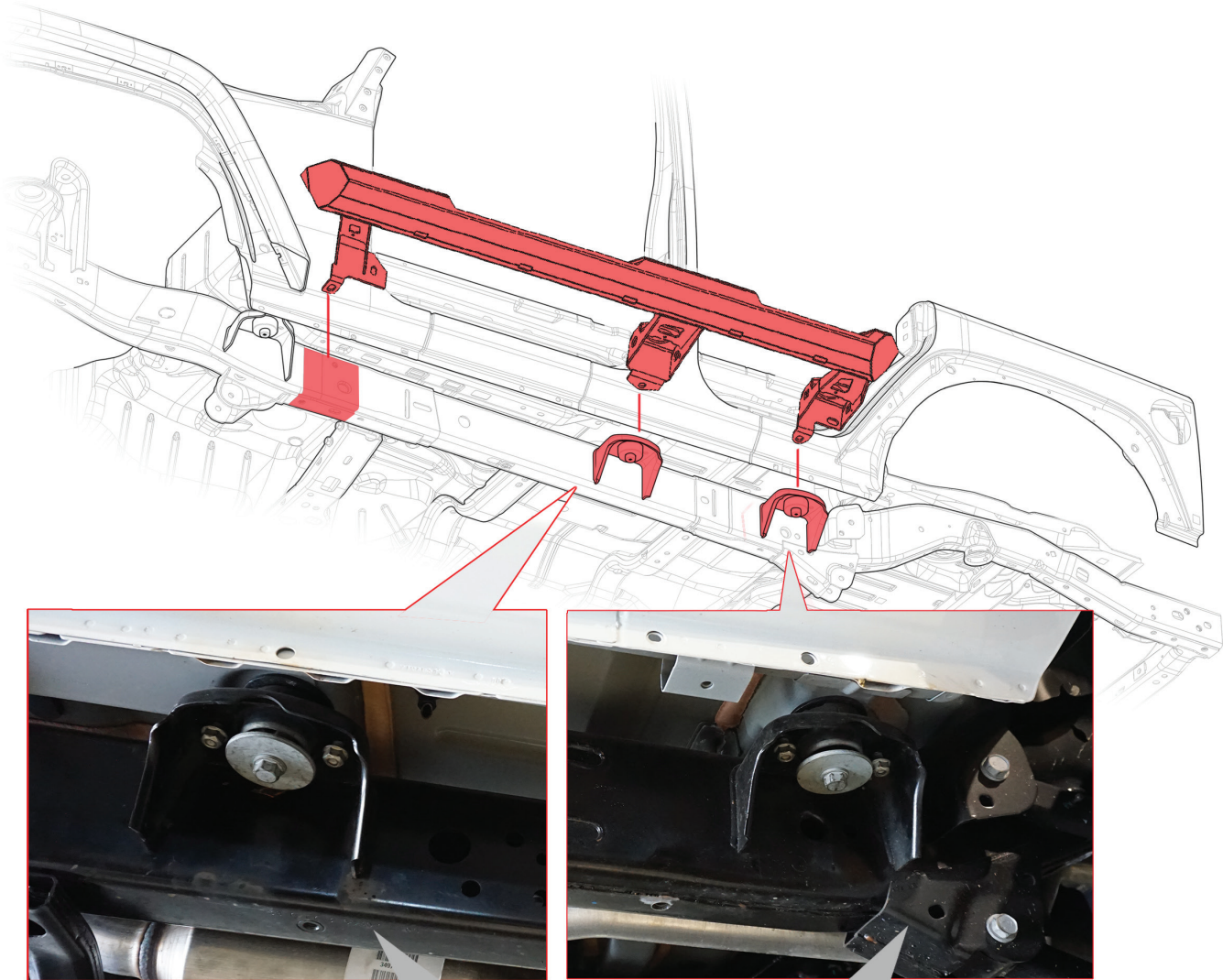
PLEASE READ THROUGH THE INSTRUCTIONS BEFORE BEGINNING ANY PART OF THE INSTALLATION PROCESS

WEB LINK: <http://lodoffroad.com/assets/pdfs/JK0704INS.pdf>



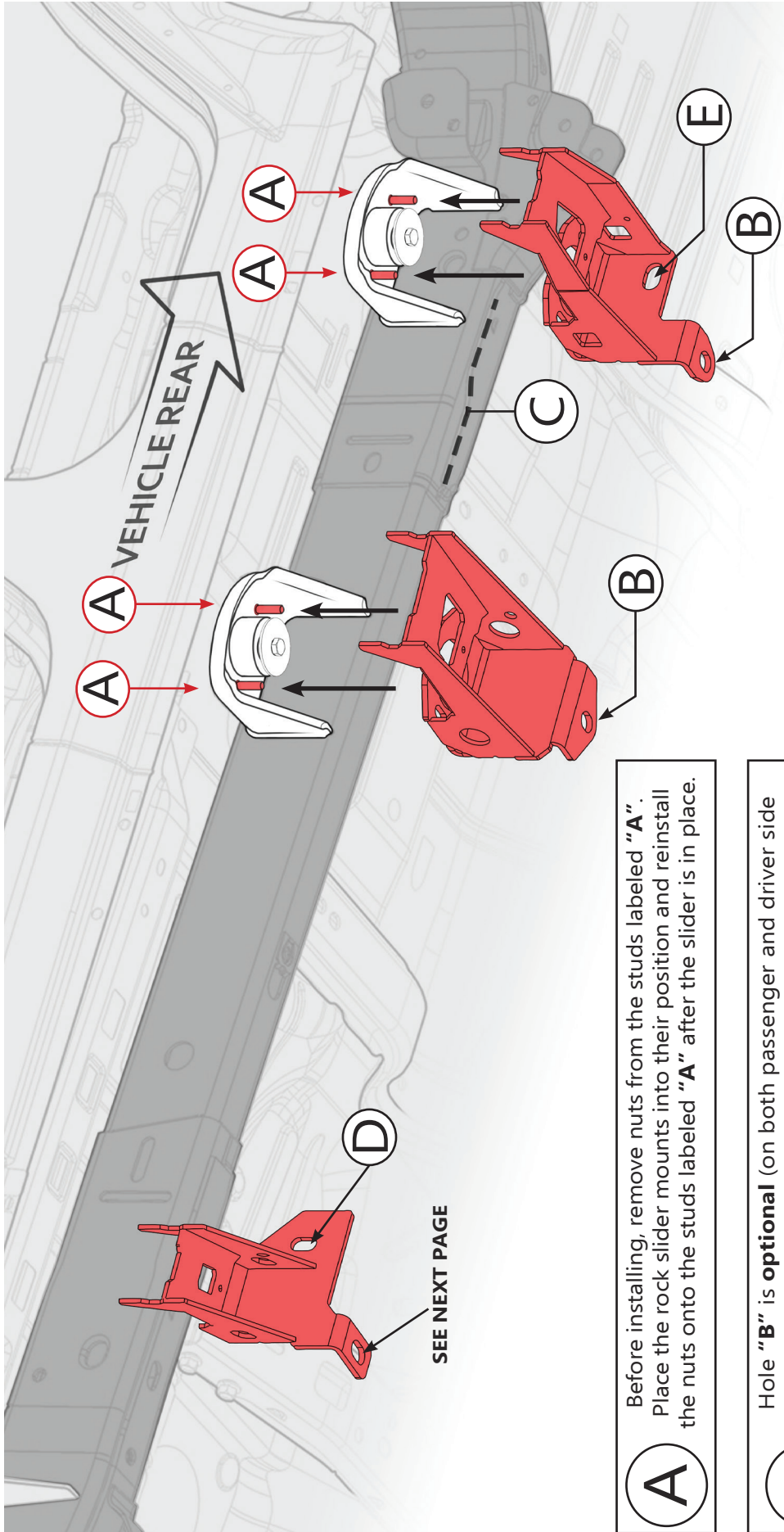
Remove the stock rock sliders (if included on vehicle)

The rock sliders mount in the shown areas.



Remove the nuts in position "A"
You may need to loosen bolt "X", but DO NOT REMOVE

FRONT, CENTER AND REAR MOUNTS - (DRIVER SIDE SHOWN)



A Before installing, remove nuts from the studs labeled "A". Place the rock slider mounts into their position and reinstall the nuts onto the studs labeled "A" after the slider is in place.

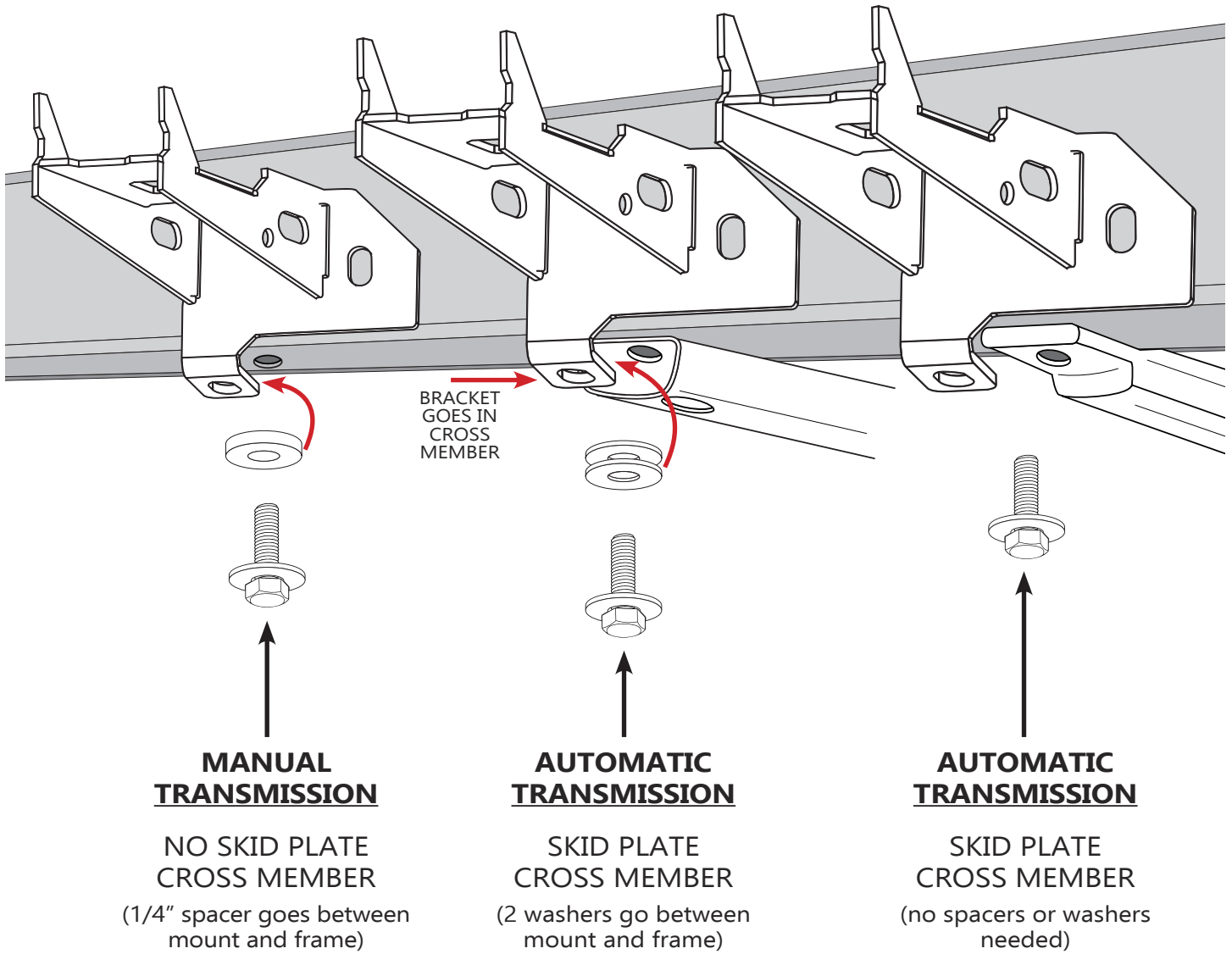
B Hole "B" is **optional** (on both passenger and driver side rear mount), but recommended for offroad use. Drill **7/16"Ø** hole and insert the self tapping bolts provided. Slowly tighten until fully seated.

C Some welds and seams may need to be ground flat with a hand grinder. The dashed line, labeled "C," indicates where we had to grind a drippy weld.

D Install **Ø1/2" x 4"** long bolt with nut and washers. Use **1/4"** backing washer on opposite side of frame rail.

DRIVER SIDE:
Install **Ø1/2" x 4"** long bolt with nut and washers. Use **1/4"** backing washer on opposite side of frame rail.

PASSENGER SIDE:
Install **Ø1/2" x 1 1/2"** long bolt and washer. Use flag nut inside of frame rail.



Thoroughly tighten all of the bolts, and you should be all set!

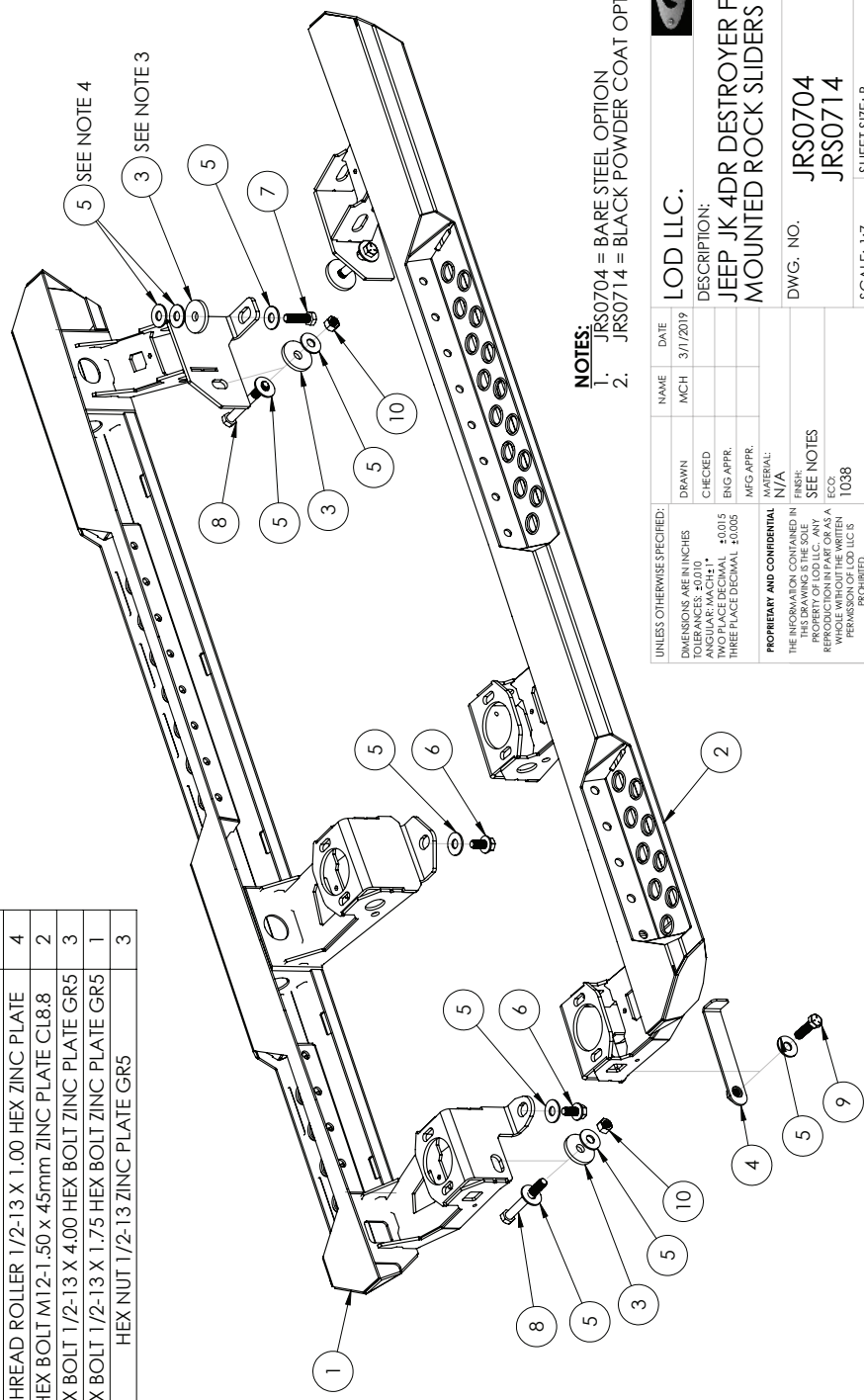


| ITEM NO. | PART NUMBER | DESCRIPTION | QTY. |
|----------|-------------|--------------------------|------|
| 1 | 4JRS0754-04 | JK DESTROYER DS WELDMENT | 1 |
| 2 | 4JRS0754-08 | JK DESTROYER PS WELDMENT | 1 |

HARDWARE

| ITEM NO. | PART NUMBER | DESCRIPTION | QTY. |
|----------|------------------|--|------|
| 3 | 2JRS0754-19 | BACKING WASHER / SPACER | 5 |
| 4 | 4JRS0754-09 | FLAG NUT 1/2-13 ZINC PLATE GR5 | 1 |
| 5 | FW50222P | FLAT WASHER Ø1/2" X 1.375" ZINC PLATE | 17 |
| 6 | TR501316ZP | THREAD ROLLER 1/2-13 X 1.00 HEX ZINC PLATE | 4 |
| 7 | HB12150M45ZPCL88 | HEX BOLT M12-1.50 x 45mm ZINC PLATE CL8.8 | 2 |
| 8 | HB501364ZPGR5 | HEX BOLT 1/2-13 X 4.00 HEX BOLT ZINC PLATE GR5 | 3 |
| 9 | HB501328ZPGR5 | HEX BOLT 1/2-13 X 1.75 HEX BOLT ZINC PLATE GR5 | 1 |
| 10 | HN5013ZPGR5 | HEX NUT 1/2-13 ZINC PLATE GR5 | 3 |

- NOTES:**
- USE LARGE SPACER WASHER ONLY ON ON JEEPS WITH NO SKID PLATE CROSS MEMBER.
 - USE WASHERS ONLY ON ON JEEPS WITH TUBULAR SKID PLATE CROSS MEMBER.
 - NO SPACERS NEEDED FOR JEEPS WITH FLATTENED SKID PLATE CROSS MEMBER.



- NOTES:**
- JRS0704 = BARE STEEL OPTION
 - JRS0714 = BLACK POWDER COAT OPTION

| | | | |
|--|-----------|------------------|----------|
| UNLESS OTHERWISE SPECIFIED: | | NAME | DATE |
| DIMENSIONS ARE IN INCHES | DRAWN | MCH | 3/1/2019 |
| ANGLES ARE AS SHOWN | CHECKED | | |
| TWO PLACE DECIMAL ±0.015 | ENG APPR. | | |
| THREE PLACE DECIMAL ±0.005 | MFG APPR. | | |
| PROPRIETARY AND CONFIDENTIAL | | MATERIAL: | |
| THE INFORMATION CONTAINED IN THIS DRAWING IS THE SOLE PROPERTY OF LOD LLC. ANY REPRODUCTION IN PART OR AS A WHOLE WITHOUT THE WRITTEN PERMISSION OF LOD LLC IS PROHIBITED. | | N/A | |
| FINISH: SEE NOTES | | DWG. NO. JRS0704 | |
| ECC: 1038 | | JRS0714 | |
| REV A | | SCALE: 1:7 | |
| SHEET 1 OF 1 | | SHEET SIZE: B | |

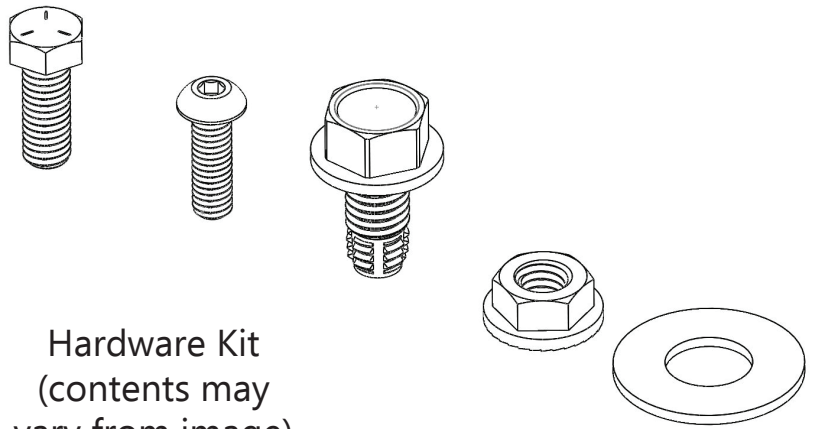


DESCRIPTION:
JEEP JK 4DR DESTROYER FRAME MOUNTED ROCK SLIDERS

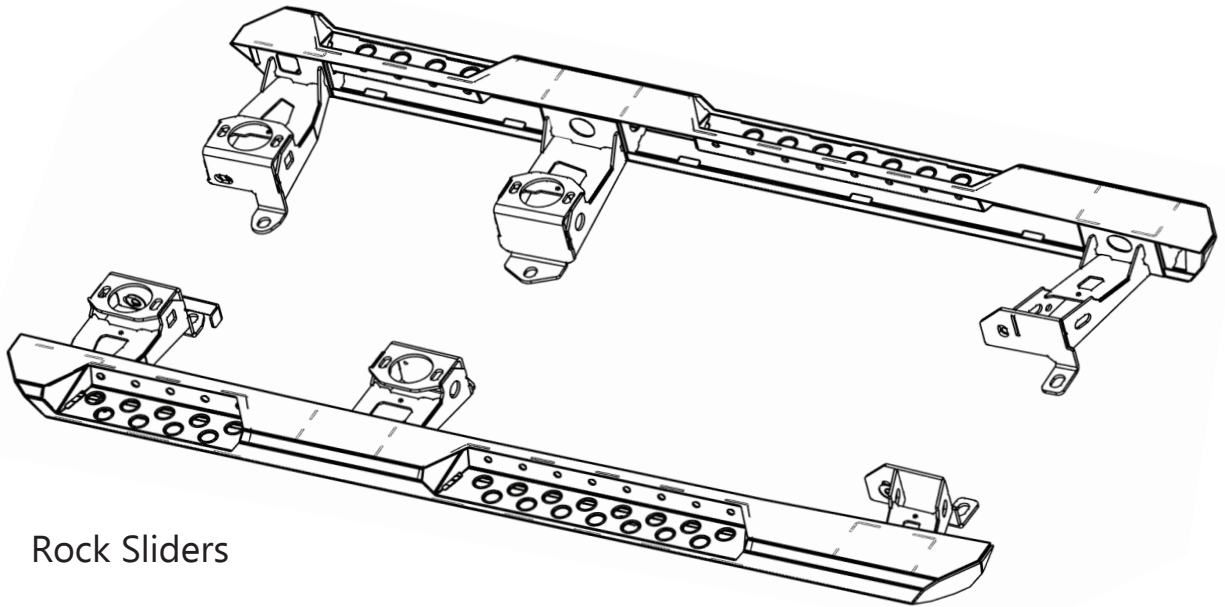


JK Jeep
Destroyer Series
Rock Sliders
Shipping Sheet
Packaged by:

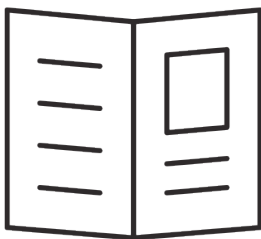
On:



Hardware Kit
(contents may vary from image)



Rock Sliders



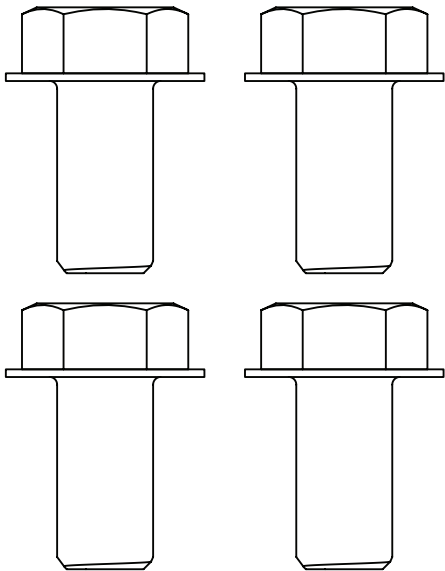
Instruction Booklet



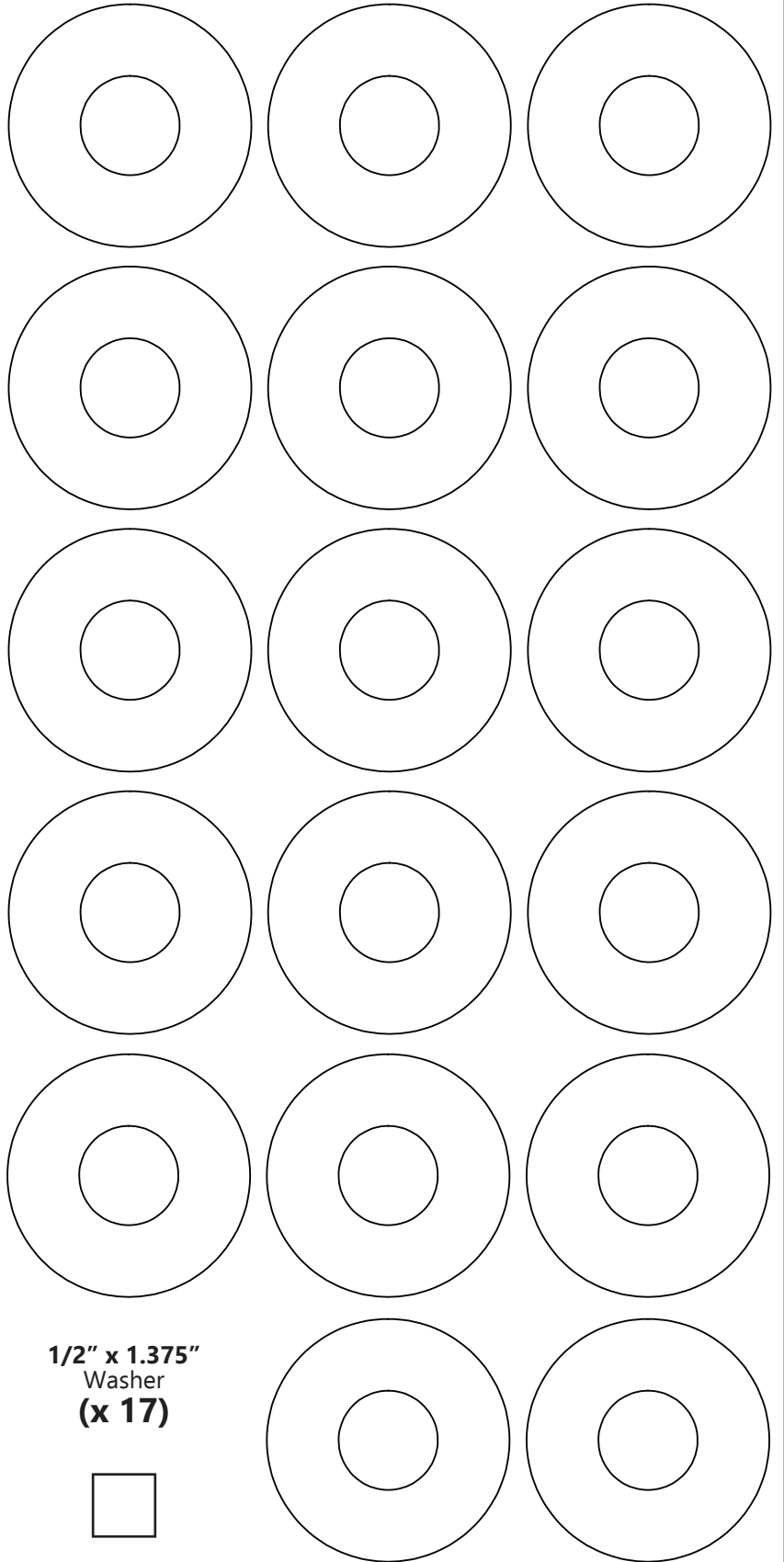
**JK Jeep
Destroyer Series
Rock Sliders
Bolt Kit**

Packaged by:

On:



**1/2" (13) x 1"
Thread Roller
(x 4)**



**1/2" x 1.375"
Washer
(x 17)**



