

CRAWLTEK

REVOLUTION

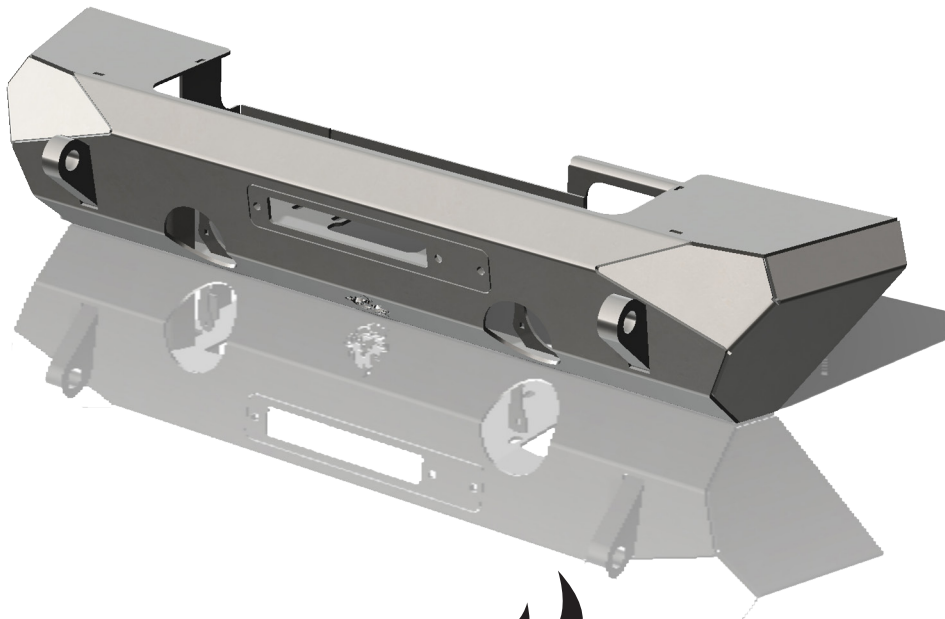
491 W. GARFIELD AVE., COLDWATER, MI 49036 • 517.278.1039
CRAWLTEKREVOLUTION.COM • E-MAIL: TECH-CRAWLTEK@RIDEFOX.COM

INSTALLATION INSTRUCTIONS

PYRO FRONT BUMPER

JK10101 - STUBBY
JK10201 - MIDWIDTH
JK10301 - FULLWIDTH

FOR USE WITH ALL
JK AND JKU MODELS FROM 2007-2018



CrawlTek YouTube

PLEASE READ THROUGH INSTRUCTIONS BEFORE INSTALLING

2024-05-28

WHAT'S IN THE BOX?

PLEASE VERIFY KIT CONTENTS BEFORE BEGINNING INSTALLATION

PART #	Qty	DESCRIPTION
06032/06033/06034	1	BUMPER - JK FRONT - PYRO
06030	1	JK PYRO FRONT BUMPER NUTSTRIP - YELLOW ZINC
06031	1	JK PYRO FRONT BUMPER FAIRLEAD MOUNT
06177	1	CRAWLTEK SS LOGO 3.5"
C0042	1	LOGO RIVETS
06011	2	PYRO BAJA DESIGN LIGHT BRACKET
C0064	1	LIGHT BRACKET HARDWARE
CWLU30010	1	DECAL: CRAWLTEK GEARSHIFT 3.5" X 3.5"
CWLU30020	1	DECAL: CRAWLTEK EYES 6" X 2"
CWLU30030	1	DECAL: CRAWLTEK JAX 3.75" X 2.8"
C0044	1	BOLT PACK
	8	7/16"-14 X 1" GRADE 8 YELLOW ZINC HEX CAP SCREW
	8	7/16" YELLOW ZINC STEEL SAE FLAT WASHER
	8	7/16"-14 ZINC SERRATED FLANGE NUT
	1	3/8"-16 X 1-1/4" GRADE 5 ZINC FINISH HEX CAP
	2	3/8"-16 X 3/4" SS BUTTON SOCKET CAP SCREW
	1	3/8" YELLOW ZINC STEEL SAE FLAT WASHER
	2	3/8"-16 ZINC SERRATED FLANGE NUT
	1	M6-1.0 X 50MM YELLOW ZINC FINISH HEX CAP SCREW
	1	M6 X 12MM YELLOW ZINC FLAT WASHER
	1	M6-1.0 FREE SPINNING WASHER NUT YELLOW ZINC
	8	NYLON NUT #6

TOOLS REQUIRED

SAFETY GLASSES

18MM SOCKET OR WRENCH

10MM SOCKET OR WRENCH

11/16" SOCKET OR WRENCH

5/8" SOCKET OR WRENCH

7/16" SOCKET

7/32" ALLEN HEAD SOCKET

FLAT HEAD SCREWDRIVER

SMALL HAMMER

CLIP TOOL



PRE-INSTALLATION NOTES

1. 2012 OR NEWER MODELS WILL NEED TO RELOCATE THE VACUUM PUMP.
2. IF INSTALLING A LARGE BODIED WINCH ADDITIONAL CUTTING MAY BE REQUIRED TO THE TOP OF THE FRAME HORNS.
3. THE PYRO BUMPER IS COMPATIBLE WITH THE OE 4-BOLT MOUNTING HALOGEN FOG LIGHTS ONLY. INCLUDED FOG LIGHT POCKET BRACKETS (06011) ARE COMPATIBLE WITH BAJA DESIGNS SQUADRON AND BAJA DESIGNS S2 LED AUXILIARY LIGHTS.

FACTORY FRONT BUMPER REMOVAL

STEP 1:

REMOVE 2 CLIPS HOLDING TRIM PIECE ON. (FIG. 1)

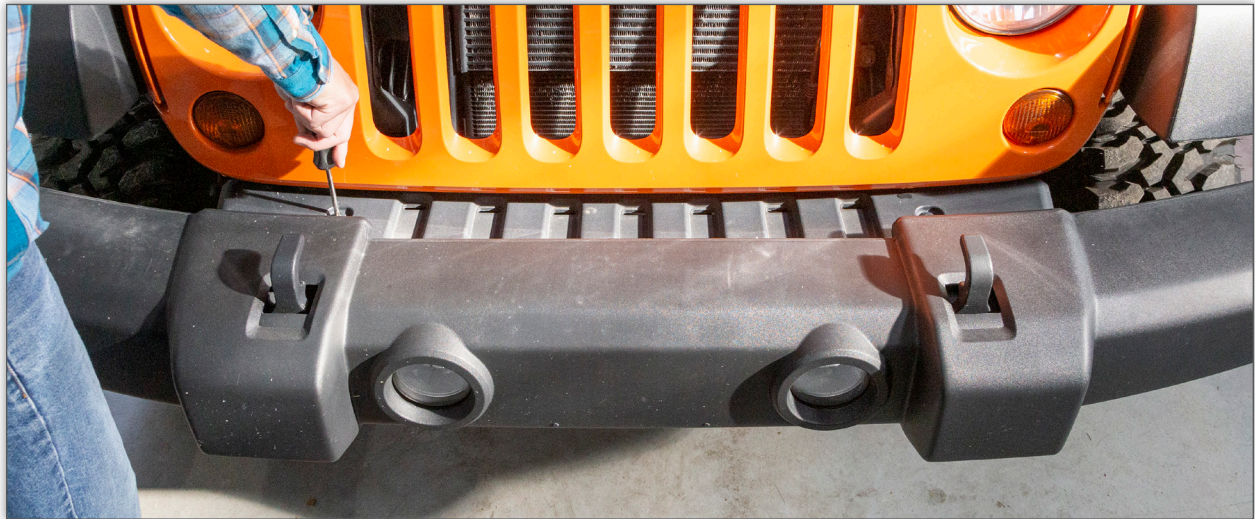


FIGURE 1

STEP 2:

REMOVE LOWER BUMPER VALANCE. (FIG. 2 AND FIG. 3)



FIGURE 2



FIGURE 3



STEP 3:

REMOVE FACTORY (8) BUMPER BOLTS. **(FIG. 4)**



STEP 3 NOTE:
18MM NUTS INSIDE FRAME
RAILS ARE DIFFICULT TO ACCESS
A SOCKET EXTENSION MAY HELP

FIGURE 4

STEP 4:

REMOVE FACTORY BUMPER FROM FRAME HORNS.

STEP 5:

DISCONNECT FACTORY FOG LIGHTS. **(FIG. 5)**



FIGURE 5

STEP 6:

REMOVE FACTORY FOG LIGHTS FROM FACTORY BUMPER, KEEP (8) FACTORY SCREWS.



FACTORY FOG LIGHT INSTALLATION

STEP 7:

INSTALL (8) NYLON NUTS INTO BUMPER FOG LIGHT MOUNTING BRACKETS. (FIG. 6)



FIGURE 6

STEP 8:

INSTALL FACTORY FOG LIGHTS REUSING (8) FACTORY SCREWS. (FIG. 7)

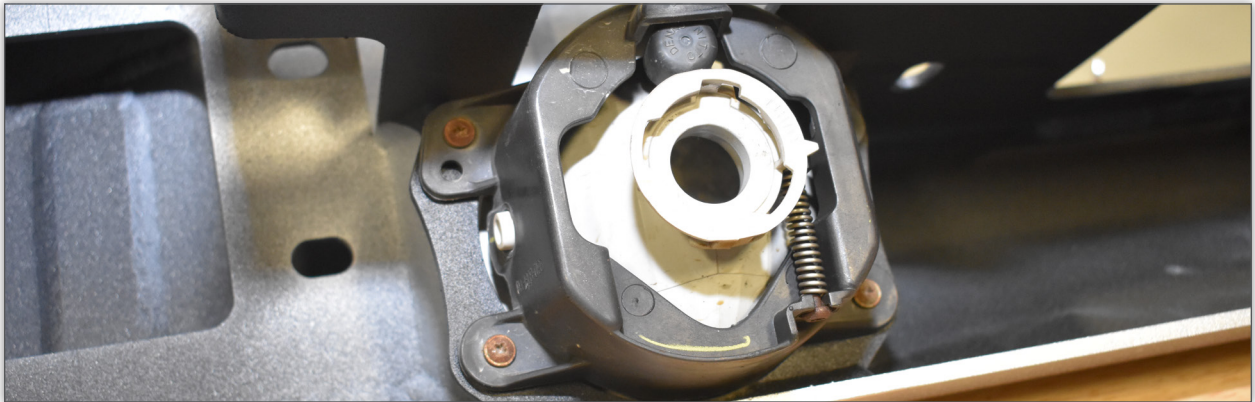


FIGURE 7

BAJA DESIGNS LIGHT INSTALLATION (OPTIONAL)

STEP 9:

FOR UPGRADING FROM FACTORY JK FOG LIGHTS, OUR PROVIDED LIGHT BRACKETS (06011) MOUNT BAJA DESIGNS SQUADRON SERIES AND S2 SERIES AUX LIGHTS INTO THE FOG LIGHT LOCATION. FOR A FORWARD LIGHT POSITION, USE BAJA DESIGNS MOUNTING HARDWARE TO MOUNT SQUADRON LIGHTS AS SHOWN IN **FIGURE 8A**. FOR RECESSING LIGHTS WITHIN THE BUMPER SHELL, MOUNT SQUADRON LIGHTS AS SHOWN IN **FIGURE 8B** USING BAJA DESIGNS MOUNTING HARDWARE. **FIGURE 8C** SHOWS LIGHTS MOUNTED IN THE FORWARD LIGHT POSITION.





FIGURE 8A



FIGURE 8B



FIGURE 8C

STEP 10:

MOUNT LIGHT & BRACKET ASSEMBLY TO BUMPER. ENSURE NYLON NUTS ARE INSTALLED INTO FOG LIGHT MOUNT (STEP 7) THEN FASTEN ASSEMBLY WITH PROVIDED SCREWS IN C0064 BOLT PACK (**FIG 8D**). WIRE LIGHTS ACCORDING TO BAJA DESIGNS WIRING INSTRUCTIONS.



FIGURE 8D



PRE-PYRO FRONT BUMPER INSTALLATION

STEP 11: (OPTIONAL)

REMOVE VACUUM PUMP. IF YOUR VEHICLE HAS STUDS HOLDING THE VACUUM PUMP IN PLACE YOU WILL NEED TO REMOVE THE FORWARD MOST STUD. CUT THE STUD FLUSH TO THE MOUNTING BRACKET.

STEP 12: (OPTIONAL)

ROTATE AND REORIENT VACUUM PUMP AS PICTURED. (FIG. 9)



FIGURE 9

STEP 12 NOTE:
REMOVE FRONT MOUNTING
STUD FOR VACUUM PUMP

STEP 13: (OPTIONAL):

INSTALL WINCH ON TO BUMPER ASSEMBLY WITH BOLTS SUPPLIED FROM WINCH MANUFACTURER. (FIG. 10)

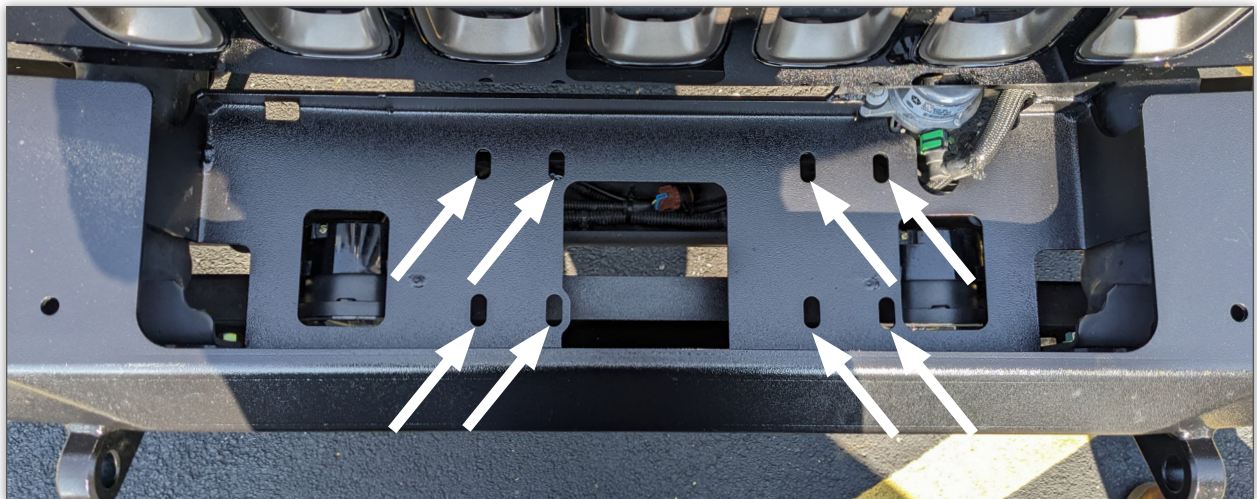


FIGURE 10



PYRO FRONT BUMPER INSTALLATION

STEP 14:

RECONNECT FOG LIGHT HARNESSES AND SET BUMPER ONTO FRAME RAILS. USING A SLIGHT UPWARD ANGLE TILT THE BACK OF THE BUMPER BACK AND OVER THE FRAME HORNS. IF YOU ARE INSTALLING A WINCH YOU MAY NEED A HELPER, AS THE WINCH AND BUMPER ASSEMBLY ARE HEAVY.

STEP 15:

ATTACH VACUUM PUMP TO BUMPER ASSEMBLY WITH SUPPLIED M6 HARDWARE.

STEP 16:

LIFT ONE SIDE OF THE BUMPER AT A TIME INTO POSITION AND INSTALL A 7/16" BOLT AND WASHER FROM THE REAR OF THE BUMPER THROUGH THE FRAME HORNS AND INTO THE BUMPER. ATTACH 7/16" SERRATED FLANGE NUT TO BOLT AND TIGHTEN. HAVE A HELPER ASSIST WITH INSTALLATION.

STEP 17:

INSTALL 3/8 NUT STRIP INTO PASSENGER POCKET INSIDE FRAME RAIL AND ATTACH BOLT THROUGH BUMPER INTO FRAME NUT STRIP LOCATED BELOW THE WINCH PLATE. (FIG. 11, FIG. 12)



FIGURE 11

STEP 17 NOTE:
FOR EASE OF NUT STRIP AND
BOLT INSTALL, 2 PEOPLE MAY
BE REQUIRED DUE TO LACK OF
VISIBILITY



FIGURE 12



STEP 18:

INSTALL THE REVERSIBLE FAIRLEAD BRACKET WITH THE 3/8 BUTTON HEAD AND FLANGE NUT. IF YOU INSTALLED A WINCH, INSTALL YOUR FAIRLEAD USING THE SUPPLIED HARDWARE. **(FIG. 13)**



FIGURE 13

STEP 19: (OPTIONAL)

CRAWLTEK HAWSE (CWLCT10100, NOT INCLUDED) INSTALLS OVER REVERSIBLE FAIRLEAD BRACKET. **(FIG. 14)**

NOTE: ALUMINUM FAIRLEAD IS INTENDED TO BE USED WITH SYNTHETIC WINCH LINE ONLY. DO NOT USE WITH STEEL CABLE, STEEL CABLE WILL DESTROY THE ALUMINUM SURFACE.



FIGURE 14



STEP 20:

INSTALL INCLUDED JAX LOGO BADGE USING THE PROVIDED RIVETS IN C0042 (**FIG 15**).

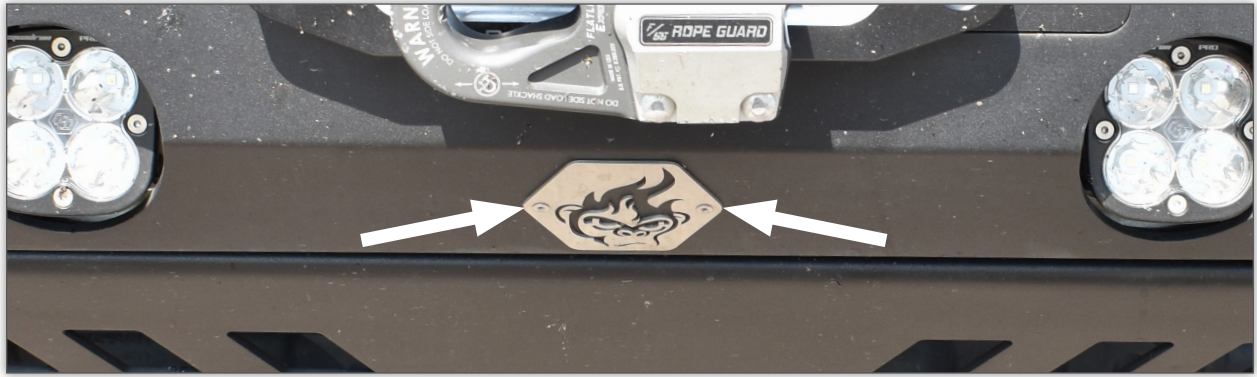


FIGURE 15

BOLT-ON STINGER INSTALLATION (OPTIONAL)

STEP 21:

FOR ADDED WINCH AND FRONT END PROTECTION, BOLT-ON BULL BAR, FLAT TOP STINGER, OR STINGER ARE COMPATIBLE WITH PYRO SERIES FRONT BUMPERS (NOT INCLUDED: CWLJK15101 - BULL BAR, CWLJK15201 - FLAT TOP STINGER, CWLJK15301 - STINGER). FOLLOW RESPECTIVE INSTRUCTIONS FOR CORRECT MOUNTING INSTALLATION.

FIGURE 16A - BULL BAR (JL VERSION SHOWN)

FIGURE 16B - FLAT TOP STINGER

FIGURE 16C - STINGER



FIGURE 16A





FIGURE 16B



FIGURE 16C





YOU'RE NOT DONE YET!

Thank you for your new CrawlTek Revolution purchase! Follow us on facebook for up to date coverage of new product releases. We love feedback, if you have any questions about the installation or parts were missing please contact us at sales-crawltek@ridefox.com or call us at 517.278.1039.

*Be sure to show off your jeep to the rest of the CrawlTek Revolution online.
Find us on facebook and instagram to keep up on new products, upcoming events and more action.
Tag us @crawltek for a chance to get featured*

