

# Quadratec® Steel Slim Flat Fender Flares

Installation Manual: for '07-'18 Jeep Wrangler (JK) #12247-2000



**Quadratec**

**⚠️ WARNING ⚠️**

TO REDUCE RISK OF SERIOUS INJURY OR PROPERTY DAMAGE:  
READ ALL SAFETY MESSAGES AND UNDERSTAND ALL INSTRUCTIONS AND PROCEDURE  
NOTICES BEFORE ATTEMPTING TO INSTALL OR USE THIS PRODUCT.

**⚠️ CAUTION ⚠️**

RISK OF EYE INJURY! SAFETY GLASSES MUST BE WORN AT ALL TIMES WHILE INSTALLING  
OR MAINTAINING THIS PRODUCT. TORQUE AND RECHECK FASTENERS AFTER 250 MILES  
AND FREQUENTLY THEREAFTER. DO NOT USE IF DAMAGED.

**A FEW WORDS ABOUT PRODUCT SAFETY:**

Your Quadratec Jeep protection product is intended to enhance the utility and enjoyment of your off road capable vehicle. Follow safety information and installation recommendations. Throughout these instructions is important safety information that is generally preceded by one of three signal words indicating the relative risk of injury, property damage or adverse consequence.

The signal words mean:

**⚠️ WARNING ⚠️**

A HAZARDOUS SITUATION WHICH, IF NOT AVOIDED, COULD RESULT IN DEATH OR  
SERIOUS INJURY. YOU CAN BE KILLED OR SERIOUSLY HURT IF YOU DON'T FOLLOW  
INSTRUCTIONS.

**⚠️ CAUTION ⚠️**

A HAZARDOUS SITUATION WHICH, IF NOT AVOIDED, COULD RESULT IN A MINOR OR  
MODERATE INJURY. YOU CAN BE MODERATELY HURT AND ALSO MAY SUFFER PROPERTY  
DAMAGE IF YOU DON'T FOLLOW INSTRUCTIONS.

**NOTICE**

CAREFUL ATTENTION IS REQUIRED TO THIS INSTRUCTION OR OPERATION BUT DOES  
GENERALLY NOT RELATE TO PERSONAL INJURY. DAMAGE TO YOUR QUADRATEC®  
PRODUCT OR OTHER PROPERTY MAY RESULT IF YOU DON'T FOLLOW INSTRUCTIONS.

**BEFORE YOU BEGIN INSTALLATION:**

Congratulations on your purchase of Quadratec® Steel Slim Flat Fender Flares for your Jeep® Wrangler. These custom Steel Slim Flat Fender Flares has been designed for protection, long life, and great looks. When unpacking, check to make sure all parts are included and not damaged due to shipping. If any part is missing or broken, please call Customer Service at 800-745-6037 as soon as possible. Thank you again for your purchase and let's start the installation process.

**⚠️ CAUTION ⚠️**

READ ALL SAFETY MESSAGES AND ALWAYS WEAR SAFETY GLASSES WHEN WORKING  
WITH TOOLS.

**NOTICE**

YOUR STOCK INNER FENDER CANNOT BE RE-USED WITHOUT SIGNIFICANT ALTERATION  
AND IT IS SUGGESTED TO VISIT QUADRATEC'S WEBSITE FOR OUR AFTERMARKET INNER  
FENDER SET.

## PARTS & REQUIRED TOOLS



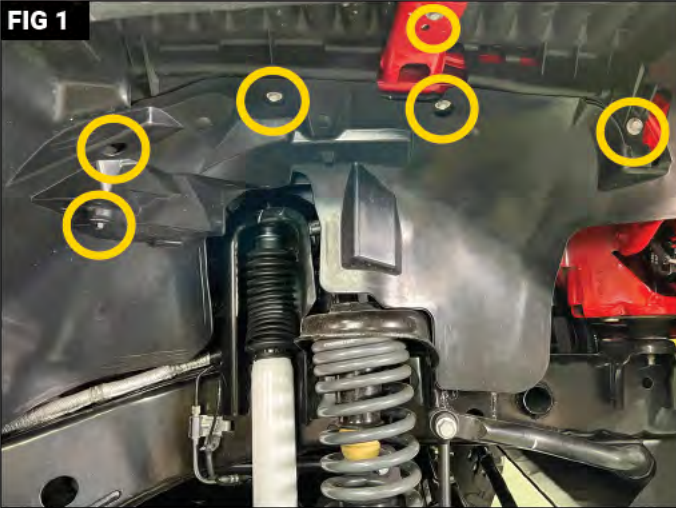
### KIT CONTENT LIST:

- A. Steel Slim Flat Front Fender Flare (x2)
- B. Steel Slim Flat Rear Fender Flare (x2)
- C. Marker Light (x2)
- D. M6 Nutsert (x16)
- E. M6 x 20mm Flat Button-Head Hex Drive Screw (x38)
- F. Flat Washer (x38)
- G. Flange Nut (x22)
- H. 4mm Allen Key

### REQUIRED TOOLS:

- Safety Glasses
- Nutsert Tool
- Drill and 3/8" Bit
- 10mm and 13mm Socket
- 10mm and 13mm Wrench
- 4mm Hex Wrench

## STEP 1: Front (Stock) Fender Flare Removal



Put on Safety Glasses. Remove the six bolts (circled) holding the fender flares and liner in place (FIG 1) using a 10mm socket and ratchet. (FIG 2)

## STEP 2



Locate the wiring harness for the running lights and side markers. Release the clip (circled) and pull apart. (Fig 3)

## STEP 3



At either front side, using even force and hands grasping the edge of the fender flares, pull directly away from the quarter panel. (Fig 4) There will be tension on from the clips and you will find resistance until they release. Some clips may stay attached to the quarter panel. (Fig 5) Remove any remaining clips attached to the panel with a pry tool and reattach to the fender flare.

#### STEP 4: Front Slim Flat Fender Flare Install

FIG 6



FIG 7



Align the front Quadratec Steel Slim Flat Fender Flare to the correct side body panel (FIG 6) and secure with the supplied M6 x 20mm Flat Button-Head Hex Drive Screw, Flat Washer, and M6 Flange Nut. You will be using the supplied 4mm Allen Key and a 13mm wrench. (FIG 7) Repeat this step on the opposite side of vehicle.

#### STEP 5

FIG 8

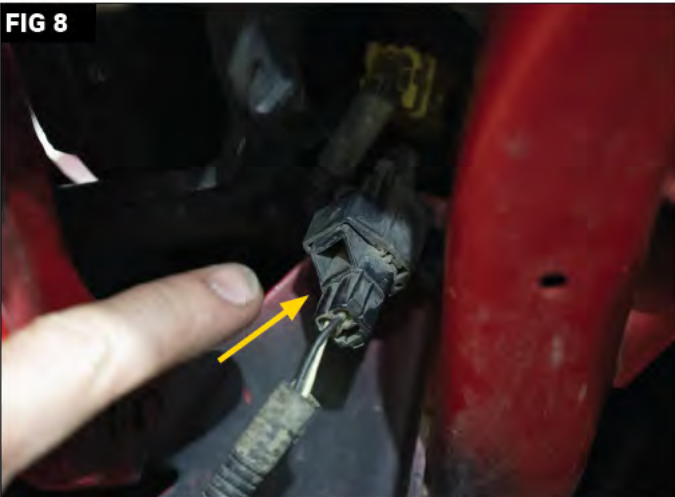


FIG 9



Locate the front marker light pigtail, the second clip located near the frame rail. (FIG 8) Disconnect this marker light pigtail extension by pushing tab in and separating the two (2) pieces. (FIG 9)

#### STEP 6

FIG 10

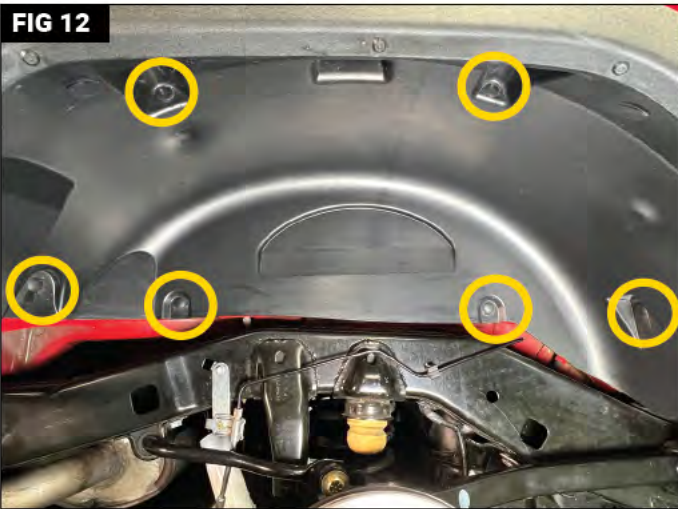


FIG 11



Slip the supplied Marker Light wire between void of the Quadratec Steel Slim Flat Fender Flare and feed the gromet snug into hole. (FIG 10) Follow up by inserting Marker Light into gromet (FIG 11), and reconnect wiring. Refer to (FIG 9)

## STEP 7: Rear (Stock) Fender Flare Removal



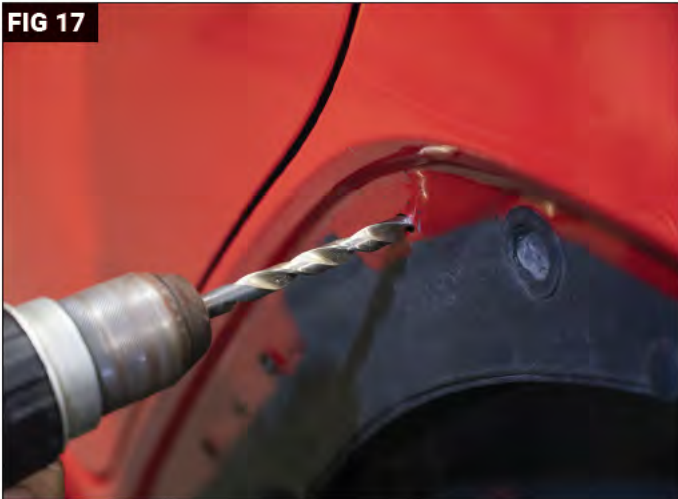
Locate the six plastic retainer rivets. (Fig 12) Using a pry tool, remove each of them and discard. (Fig 13)

## STEP 8



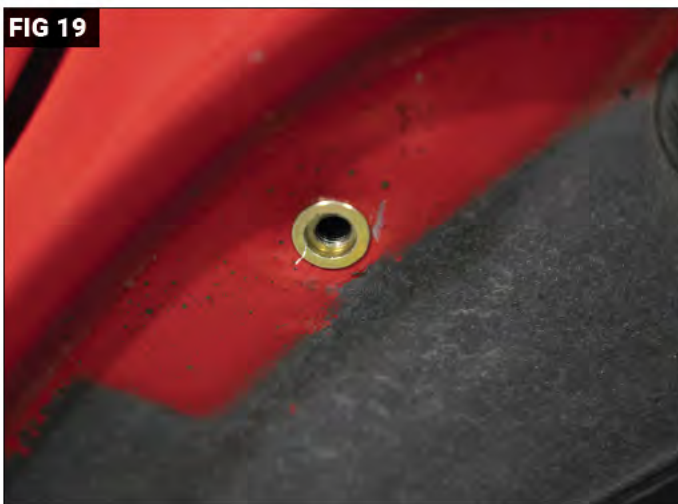
At either rear side, using even force and hands grasping the edge of the fender flares, pull directly away from the quarter panel. (Fig 14) There will be tension from the clips and you will feel resistance until they release. Some clips may stay attached to the quarter panel. (Fig 15) Remove any clips that stay attached to the quarter panel with a pry tool and reattach to the fender flare.

## STEP 9: Rear Slim Flat Fender Flare Install



With a 3/8" drill bit, drill into each existing fender mounting hole to enlarge for the Nutsert. (FIG 17) With Nutsert tool, affix the M6 Nutsert into each quarter panel drilled hole. (FIG 18)

## STEP 10

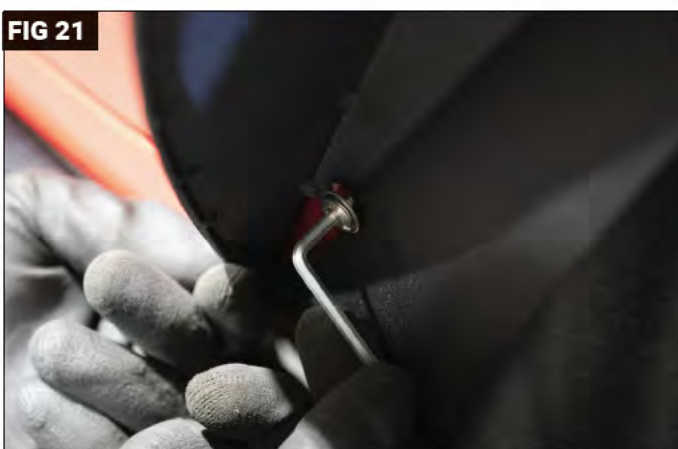


Properly installed M6 Nutsert into quarter panel. (FIG 19)



Align Rear Quadratec Steel Slim Flat Fender Flare to quarter panel and each newly installed Nutsert. (FIG 20)

## STEP 11



With the supplied M6 x 20mm Flat Button-Head Hex Drive Screws and Flat Washers, secure the Quadratec Steel Slim Flat Fender Flare to the rear quarter panel of vehicle using a 4mm Allen Key. (FIG 21)

Installation is now complete



# Quadratec® Exclusive Three Year Limited Warranty

Your Quadratec® branded accessories are covered by the following Limited Warranty provided exclusively by Quadratec, Inc., 1028 Saunders Lane, West Chester PA 19380.

This **Limited Warranty** is the only warranty made in connection with your purchase. Quadratec neither assumes nor authorizes any vendor, retailer or other person or entity to assume for it any other obligation or liability in connection with this product or Limited Warranty. This Limited Warranty does not apply and is not cumulative to any accessory or part distributed by Quadratec for which the Manufacturer provides a separate written warranty.

## **What is Covered:**

Subject to the terms, exclusions and limitations herein and with respect only to Quadratec branded accessories first sold in the United States, Quadratec warrants to the initial retail purchaser only that your Quadratec accessory shall be free of defects in material and workmanship: for a period of three (3) years from date of retail purchase.

This **Limited Warranty** is not assignable and shall terminate upon sale of the vehicle upon which the Quadratec accessory is installed or other transfer to third persons.

All other warranties are hereby disclaimed, except to the extent prohibited by applicable law in which case any implied warranty of merchantability or fitness for a particular purpose on this product is limited to three (3) years from date of initial retail sale. Quadratec reserves the rights to: (a.) **require invoice or other proof your accessory is within the terms of this Limited Warranty as a condition of warranty service and, (b.) make future revisions to this product and Limited Warranty without prior notice or obligation to upgrade your product.**

## **What is Not Covered:**

Your Quadratec Limited Warranty does not cover products or parts Quadratec determines to have been damaged by or subjected to: (a.) **installation damage, alteration, modification, combination with other parts, failure to maintain or improper repair or service, (b.) normal wear & tear, cosmetic damage or damage from moisture or water immersion, (c.) Acts of God, accidents, misuse, negligence, inadequate mounting or impact with vehicle(s), obstacles or other aspects of the environment, (d.) theft, vandalism or other intentional damage.**

## **Remedy Limited to Repair/Replacement:**

The exclusive remedy provided hereunder shall, upon Quadratec inspection and at our option, be either repair or replacement of product or parts (new or refurbished) covered under this Limited Warranty. Customers requesting warranty consideration should first contact Quadratec to obtain a RGA number (610-701-3336). All labor, removal, shipping and installation costs are customer's responsibility.

## **Other Limitations - Exclusion of Damages - Your Rights Under State Law:**

In consideration of the purchase price paid, neither Quadratec nor any independent Quadratec distributor/licensee are responsible for any time loss, rental costs, or for any incidental, consequential, punitive or other damages you may have or incur in connection with any part or product purchased. Your exclusive remedy hereunder for covered parts is repair/replacement as described above.

This **Limited Warranty** gives you specific rights. You may also have other rights that vary from state to state. For example, some states do not allow limitations of how long an implied warranty lasts and /or do not allow the exclusion or limitation of incidental or consequential damages, so the limitations and exclusions herein may not apply to you.

©Quadratec, Inc. 2022. All Rights Reserved.  
A4 Version 7/14/22

Instructions Part #12999.3277

**Quadratec**