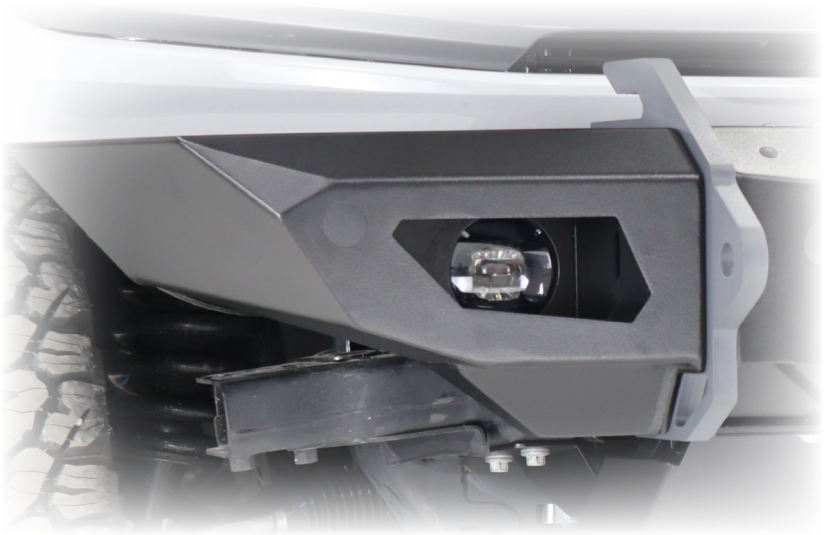




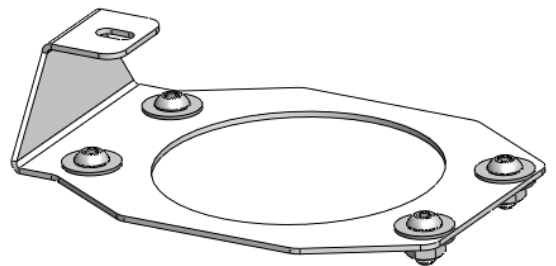
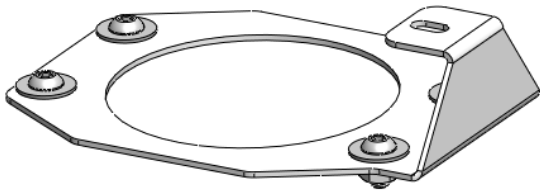
BLACK-OPS SERIES

JEEP JL/JT

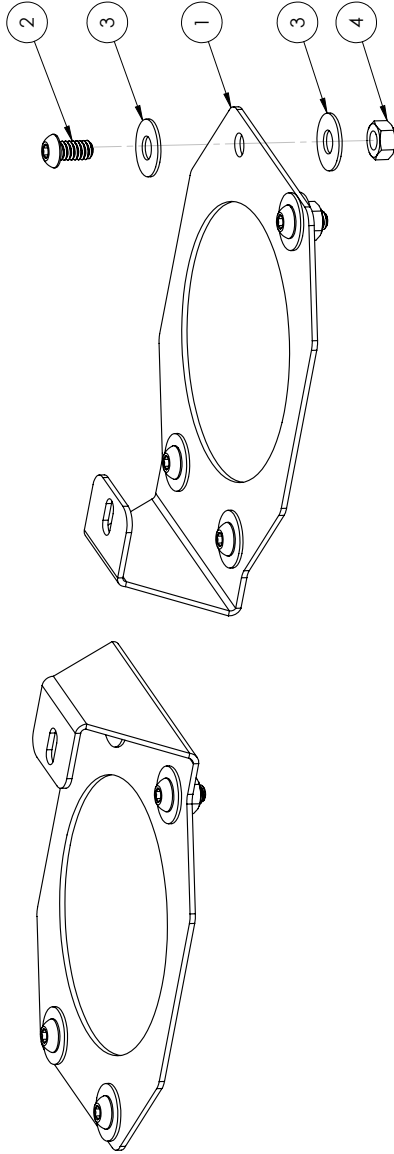
BLACK OPS OEM FOG LIGHT
BEZELS



VERIFY YOU HAVE ALL THE COMPONENTS BEFORE STARTING THE INSTALLATION. REFER TO THE ENGINEERING DRAWINGS AT THE END OF THIS DOCUMENT FOR A COMPLETE PARTS LIST



ITEM NO.	PART NUMBER	DESCRIPTION	QTY.
1	2JLB1800-03	JEEP JL/JT 2020+ FOG LIGHT BRACKET	2
2	BHSCS 1/4-20 X 0.50 ZINC PLATE	BHSCS 1/4-20 X 0.50 ZINC PLATE	8
3	FW251ZP	FLAT WASHER Ø1/4" X .75 ZINC PLATE	16
4	HN2520ZP GR5	HEX NUT 1/4-20 ZINC PLATED GR5	8



- NOTES:**
- JFL1880 = BARE STEEL OPTION
 - JFL1881 = BLACK POWDER COAT
 - WEIGHT = APPROX 1 LBS

UNLESS OTHERWISE SPECIFIED:		NAME	DATE
DRAWN	MCH	LOD LLC.	7/15/2022
CHECKED			
DESIGNED			
APPROVED			
TWO PLACE DECIMAL ±0.015	ENG APPR.		
THREE PLACE DECIMAL ±0.005	MFG APPR.		
PROPRIETARY AND CONFIDENTIAL		MATERIAL:	
THE INFORMATION CONTAINED IN THIS DRAWING IS THE SOLE PROPERTY OF LOD LLC. ANY REPRODUCTION IN PART OR AS A WHOLE WITHOUT THE WRITTEN PERMISSION OF LOD LLC IS PROHIBITED.			
DWG. NO. JFL1880		REV	A
JFL1881			
SCALE: 1:1.5		SHEET SIZE: B	SHEET 1 OF 1



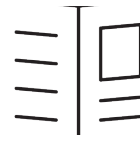
DESCRIPTION:
JEEP FOG LIGHT BEZEL KIT



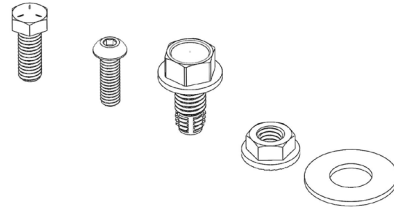
BLACK-OPS SERIES

JEEP JL/JT

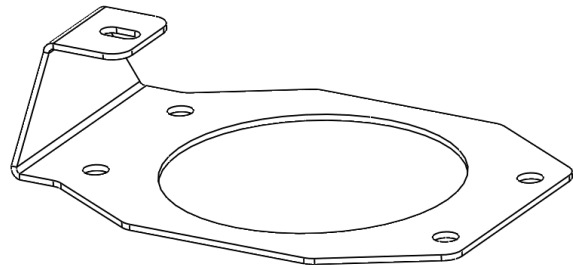
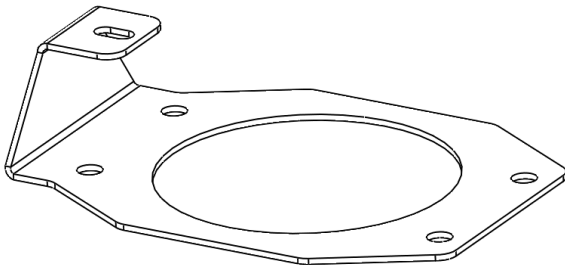
BLACK OPS OEM FOG LIGHT
BEZELS



INSTRUCTION
SHEET



BOLT KIT



JEEP JL/JT FOG LIGHT BRACKET

2JLB1800-03

(x2)

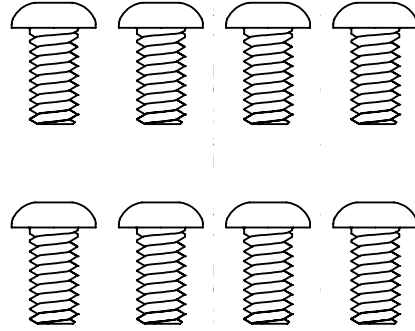




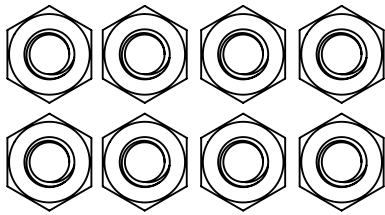
JEEP
BLACK-OPS SERIES
JEEP JL/JT FOG LIGHT BEZEL
Bolt Kit
JFL1880-BK

Packaged by:

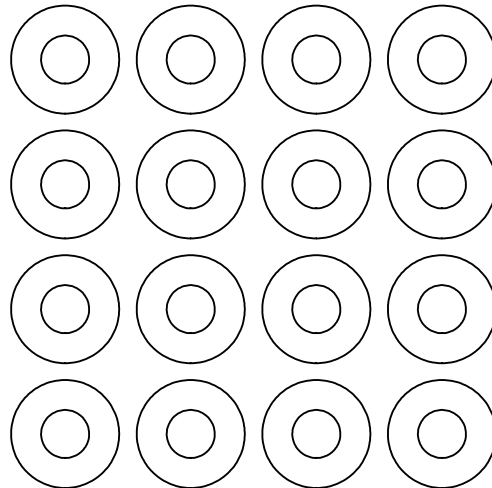
On: _____



BUTTON HEAD SCREW
1/4-20 X 0.50"
(94049)
(x6)



HEX NUT 1/4-20
(36302)
(x8)



FLAT WASHER
#12 X 0.56"
(33076)
(x16)