



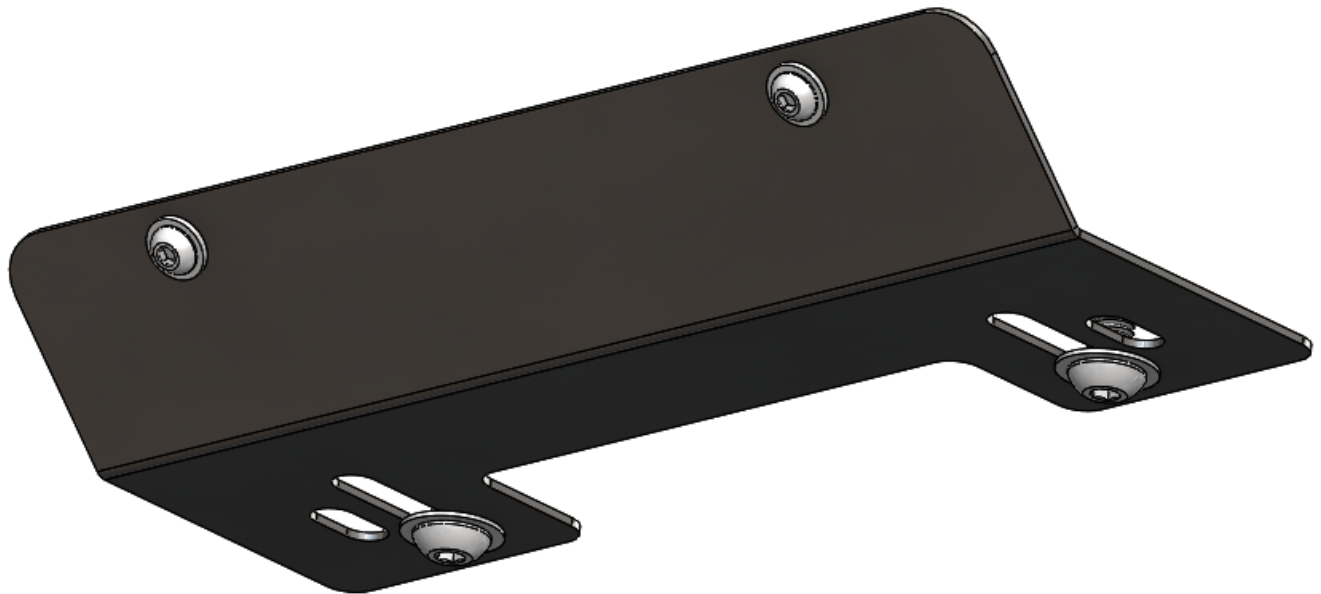
SIGNATURE SERIES

JK/JL/JT

LICENSE PLATE FRONT
BUMPER UNDER
MOUNT

WEB LINK: <http://lodoffroad.com/assets/pdfs/JLP0720 License Plate FB Under Mount.pdf>

VERIFY YOU HAVE ALL THE COMPONENTS BEFORE STARTING THE INSTALLATION. REFER TO THE ENGINEERING DRAWINGS AT THE END OF THIS DOCUMENT FOR A COMPLETE PARTS LIST

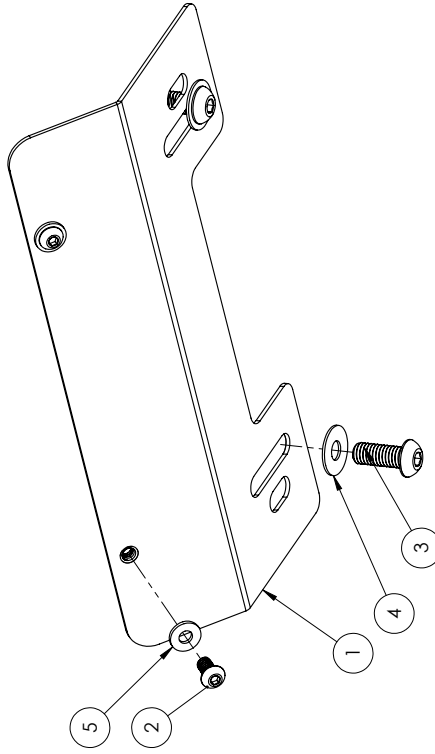


****Maintenance****

- Periodically check and re-tighten all fasteners.
- Periodically check for scratches or dings which can happen over time or after heavy use or highway driving. It is important to address these areas as soon as possible to prevent flaking and corrosion or rust from spreading. We recommend using Rustoleum® brand Black Semi-Gloss Protective Enamel (oil based). Remove loose powder coating, sand the area and clean using alcohol. Apply using a foam brush by dabbing to match the powder coat texture.



ITEM NO.	PART NUMBER	DESCRIPTION	QTY.
1	4JLP0720-01	SIG LICENSE PLATE FB UNDER MOUNT	1
2	BHSCS252008ZP	BHSCS 1/4-20 X 0.50 ZINC PLATE	2
3	BHSCS381616ZP	BHSCS 3/8-16 X 1.00 ZINC PLATE	2
4	FW3114ZP	FLAT WASHER Ø5/16" X .875" ZINC PLATE	2
5	FW1209ZP	FLAT WASHER #12 X .56" ZINC PLATED	2



NOTES:
 1. JLP0720 = BARE STEEL OPTION
 2. JLP0721 = BLACK POWDER COAT OPTION

UNLESS OTHERWISE SPECIFIED: DIMENSIONS ARE IN INCHES TOLERANCES: ±0.010 FIRST PLACE DECIMAL ±0.005 SECOND PLACE DECIMAL ±0.005 THIRD PLACE DECIMAL ±0.005	DRAWN	NAME	DATE
CHECKED	MCH		8/19/2020
ENG APPR.			
MFG APPR.			
MATERIAL:			
N/A			
PROPRIETARY AND CONFIDENTIAL			
THE INFORMATION CONTAINED IN THIS DRAWING IS THE SOLE PROPERTY OF LOD LLC. ANY REPRODUCTION IN PART OR AS A WHOLE WITHOUT THE WRITTEN PERMISSION OF LOD LLC IS PROHIBITED.			
LOD LLC.		DESCRIPTION:	
		SIGNATURE LICENSE PLATE FRONT BUMPER UNDER MOUNT	
DWG. NO.	JLP0720	SCALE:	1:2
REV	JLP0721	SHEET SIZE:	B
	A		SHEET 1 OF 1

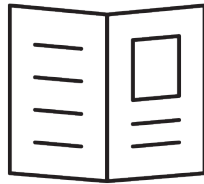




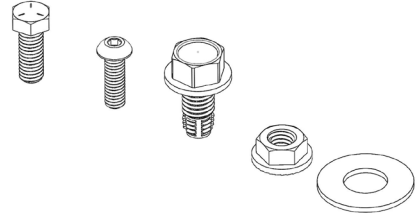
JK/JL/JT Jeep
SIGNATURE SERIES
 LICENSE PLATE FRONT
 BUMPER UNDER MOUNT
 SHIPPING SHEET

Packaged by:

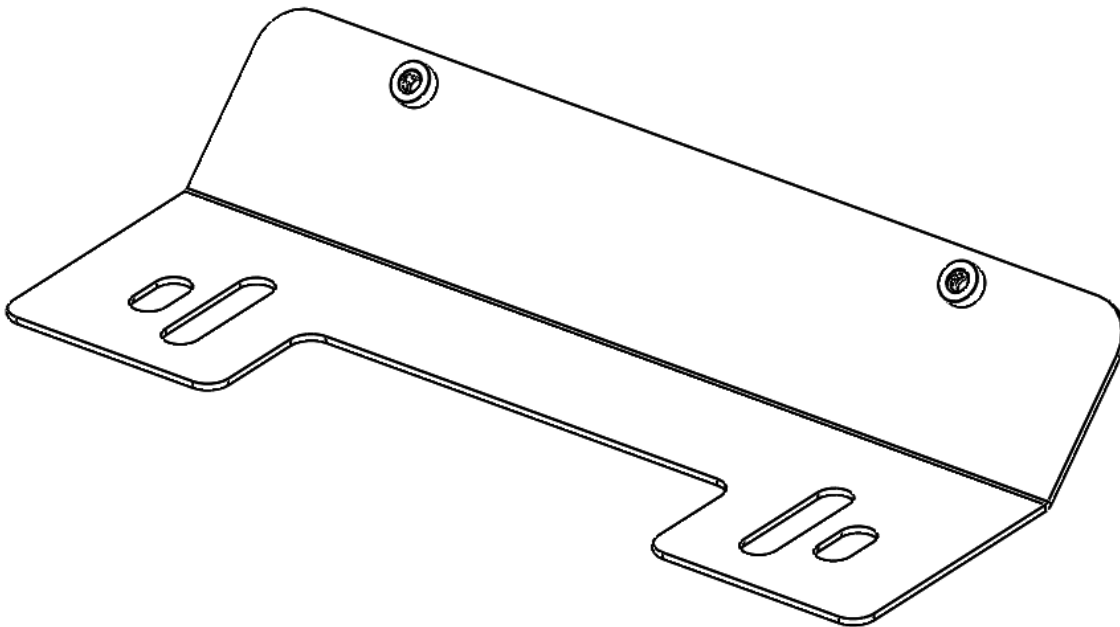
On:



Instruction
Booklet



BOLT KIT
(may vary)



SIG LICENSE PLATE FRONT
 BUMPER UNDER MOUNT
 4JLP0720-01
(x1)

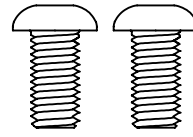




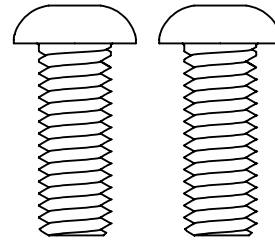
JK/JL/JT Jeep
SIGNATURE SERIES
FRONT BUMPER LICENSE
PLATE UNDER MOUNT
BOLT KIT

Packaged by:

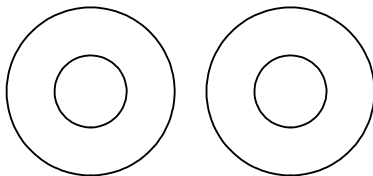
On:



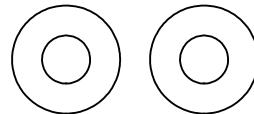
1/4-20 X .50" BUTTON HEAD CAP SCREW
(x2)



3/8-16 X 1.00" BUTTON HEAD CAP SCREW
(x2)



5/16 X .875" FLAT WASHER
(x2)



#12 X .56" FLAT WASHER
(x2)

