

JP54-061, JP54-062, JP54-063, & JP54-064

# JEEP JL SIDE MOUNTS



## INSTALLATION INSTRUCTIONS

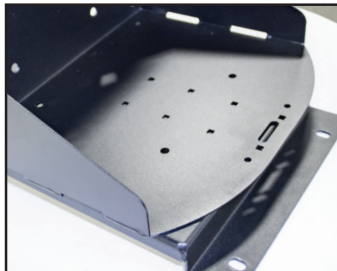
### Tools Needed

- T40 Torx Socket
- ½" Socket
- 13mm Wrench
- ½" Wrench
- 10mm Socket



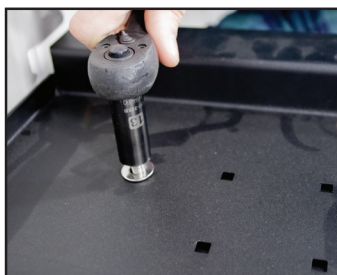
### STEP 4

Using a T40 Torx bit, remove the 2 bolts on the side of the Jeep that fasten the windshield bracket to the windshield's pillar.



### STEP 5\*

Line up the Jerry can tray/rotopax mount on the side mount (before it is installed on the Jeep).



### STEP 6

Using (2) ½" wrenches, install the Tray/Mount in the desired location on the side mount using the provided 5/16"-18 x 1" hardware.



### STEP 1

Using a 10mm socket, remove the nuts (6) that hold the nerf bar to the pinch seam on the underside of the Jeep.



### STEP 2

Using a 13mm socket, remove the bolts (3) that attach the nerf bar to the floor boards of the Jeep.

### STEP 3

Carefully remove the nerf bar from the Jeep.

**JP54-061**  
Passenger Side Mount

**JP54-062**  
Driver Side Mount

**JP54-063**  
Passenger Side Mount +Tray

**JP54-064**  
Driver Side Mount + Tray



\* Images after STEP 5 are shown without the tray attached for attachment details.

# MORryde

## HEAVY. DUTY. ADVENTURE.

www.MORryde.com • 574.293.1581

JP54-061, JP54-062, JP54-063, & JP54-064

# JL SIDE MOUNT



## INSTALLATION INSTRUCTIONS



### STEP 7

Line up the holes in the top of the mount with the holes in the windshield bracket.



### STEP 8

Install the provided M8-1.25 bolts through the side mount and into the windshield bracket with the appropriate spacers between the side mount and the Jeep. (The shorter of the two spacers should be installed on the side closer to the door of the Jeep and the longer of the two spacers should be installed on the side closest to the front bumper of the Jeep.)



### STEP 9

Looking at the pinch seam below the Jeep, line up the bottom-most slots in the side mount with the front-most holes in the pinch seam on the Jeep.



### STEP 10

Slide the studs on the back of the nerf bar through the side mount and then through the pinch seam (where it was previously installed). The side mount should now be between the nerf bar and the pinch seam on the Jeep.



### STEP 11

Re-install the rest of the nerf bar and fasten it in place using the 10mm nuts and 13mm bolts that were previously removed from the Jeep. It is best not to completely tighten down any of the hardware until the install is completed.

### STEP 13

Lastly, reinstall bolts mounting the nerf bar to the floor boards of the Jeep.

### STEP 12

Once all of the bolts are started in their corresponding holes, tighten down all hardware.

\* Images after STEP 5 are shown without the tray attached for attachment details.

# MORryde

## HEAVY. DUTY. ADVENTURE.

www.MORryde.com • 574.293.1581