



ARMOR LITE SERIES

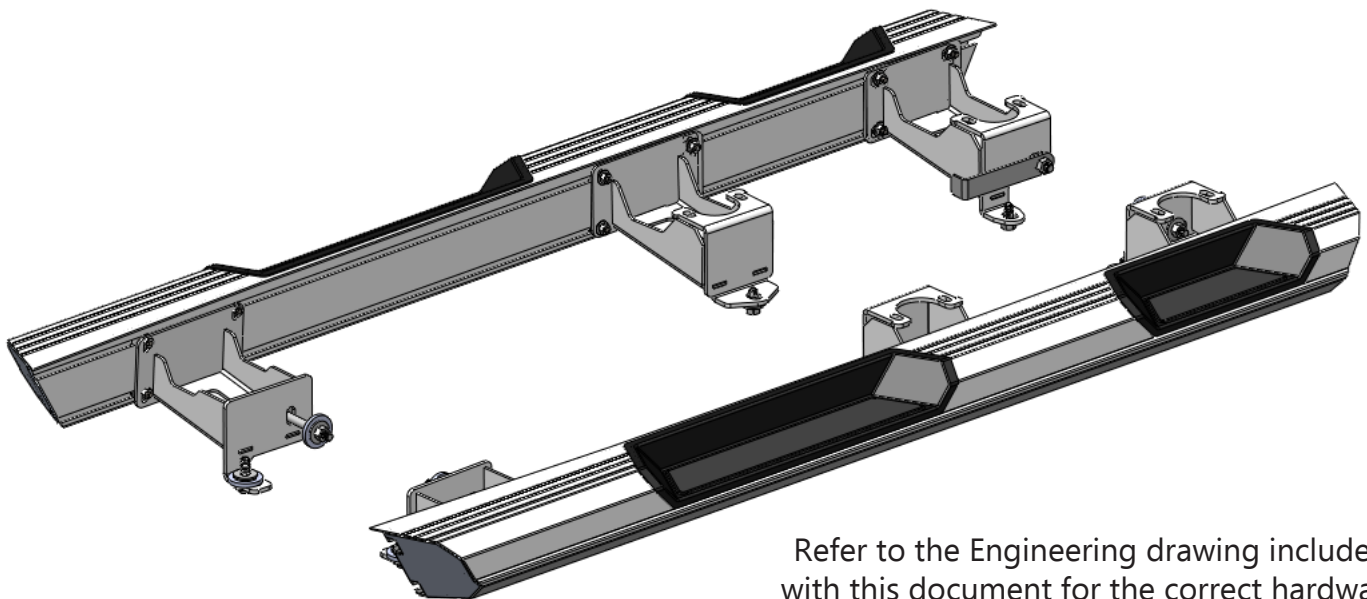
JK

**JEEP JK 4DR ARMOR LITE
SLIDERS**



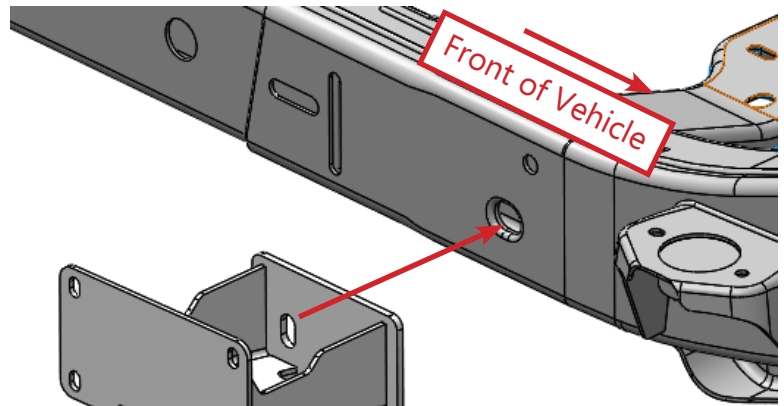
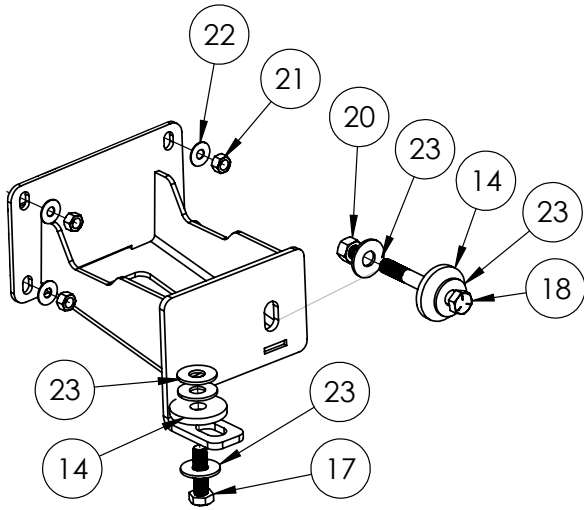
WEB LINK: <http://lodoffroad.com/assets/pdfs/JRS0760 Jk 4DR ARMOR LITE SLIDER.pdf>

***VERIFY YOU HAVE ALL THE COMPONENTS BEFORE STARTING THE INSTALLATION. REFER TO THE
ENGINEERING DRAWINGS AT THE END OF THIS DOCUMENT FOR A COMPLETE PARTS LIST***



Refer to the Engineering drawing included with this document for the correct hardware required at each step of the installation.

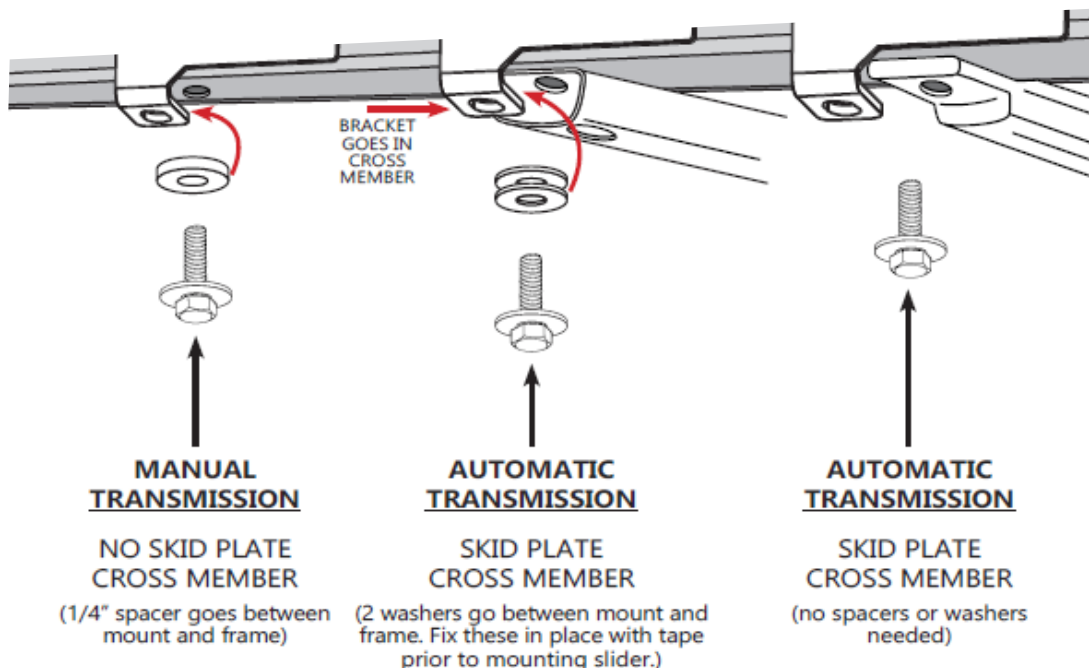
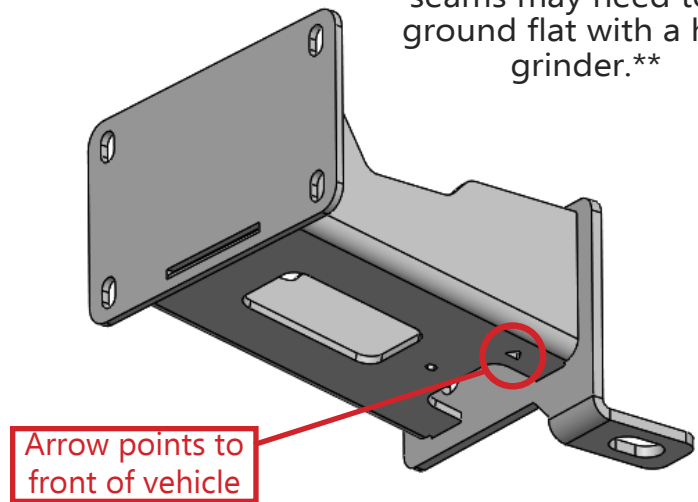
Install the Front Mounts as shown. Install the 1/2" Hex Bolt and Washers from inside the frame rail. Be sure to use the thick Backing Washer over the large hole on the inside of the frame rail.



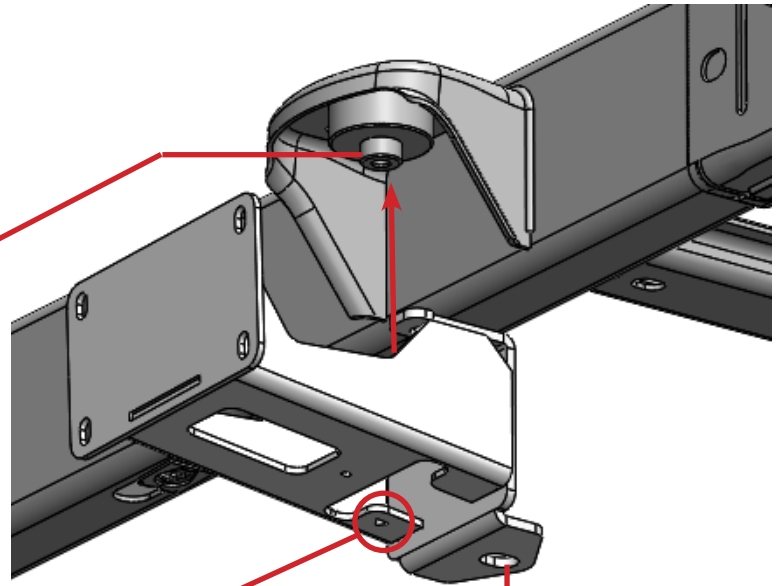
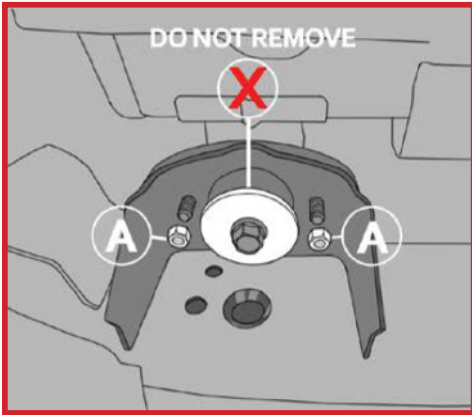
Some welds and seams may need to be ground flat with a hand grinder.

Install the M12 Hex Bolt and Washer into the lower mounting hole

Depending on your Jeep model and year, you may have a transmission cross member using the same mounting hole as Armor Lite Front Mount. We provide additional Washers and Backing Washers that you may use to correctly align your slider up and down which help maintain a consistent gap between the slider and your Jeep body.



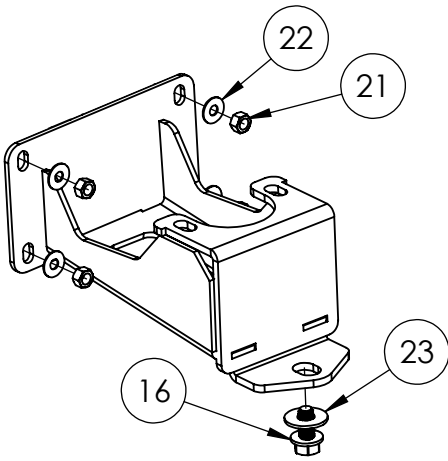
Install the Center Mounts as shown using the two body isolator nuts "A" shown below. You may need to loosen the large center bolt slightly if the large washer is in the way, but do not remove it.



****Arrow points to front of vehicle****

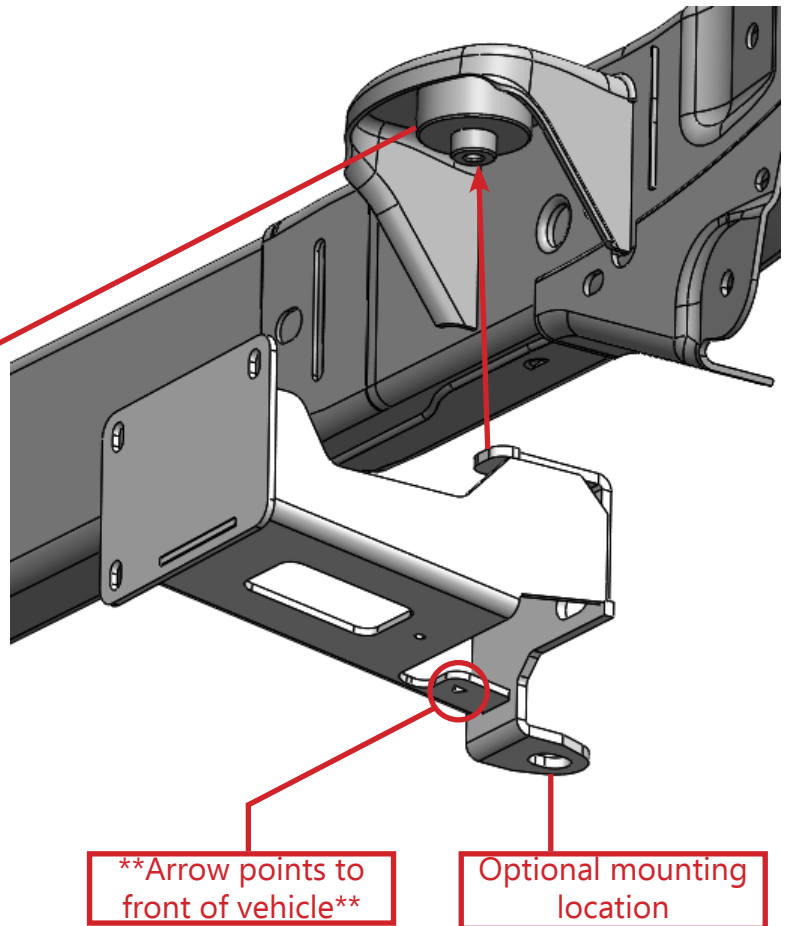
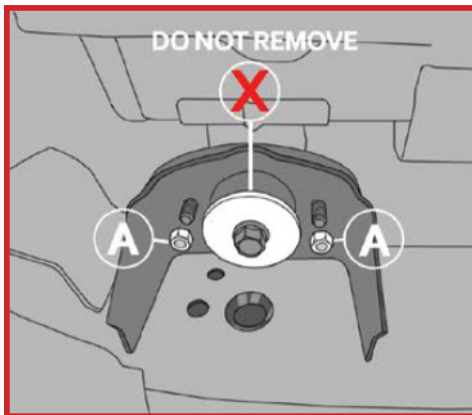
Optional mounting location

****Some welds and seams may need to be ground flat with a hand grinder.****



The lower mounting hole is optional (on both passenger and driver side Center and Rear Mounts), but recommended for offroad use. Drill 7/16"Ø hole and insert the self tapping Thread Roller Bolts provided. Slowly tighten until fully seated.

Install the Rear Mounts as shown using the two body isolator nuts "A" shown below. You may need to loosen the large center bolt slightly if the large washer is in the way, but do not remove it.



****Arrow points to front of vehicle****

Optional mounting location

The lower mounting hole is optional (on both passenger and driver side Center and Rear Mounts), but recommended for offroad use. Drill 7/16"Ø hole and insert the self tapping Thread Roller bolts provided. Slowly tighten until fully seated.

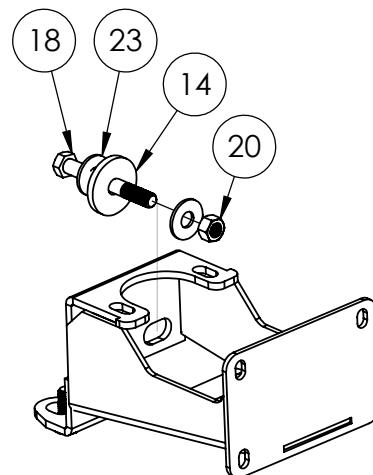
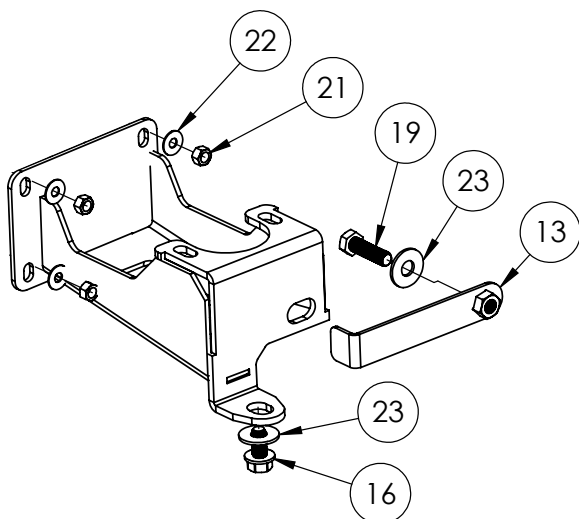
****Some welds and seams may need to be ground flat with a hand grinder.****

Passenger Side

On the passenger side, install the Flag Nut provided into the frame rail, install the 1/2" Hex Bolt and Washer as shown.

Driver Side

On the driver side, install the 1/2" Hex Bolt and Washers from inside the frame rail. Be sure to use the thick Backing Washer over the large hole on the inside of the frame rail.



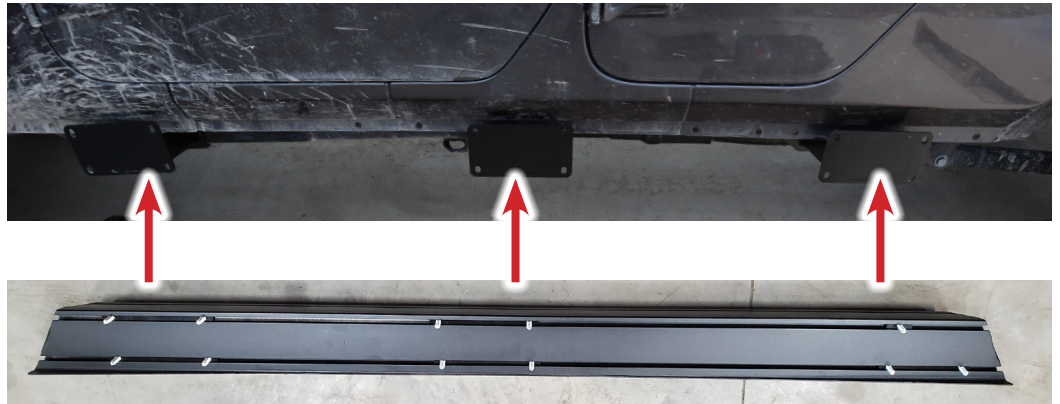
Install 4 Double Backup Plates with Carriage Bolts as shown into the T-Slots on the back of the Armor Lite Step Assembly. Position these for the Front and Center Mounts.



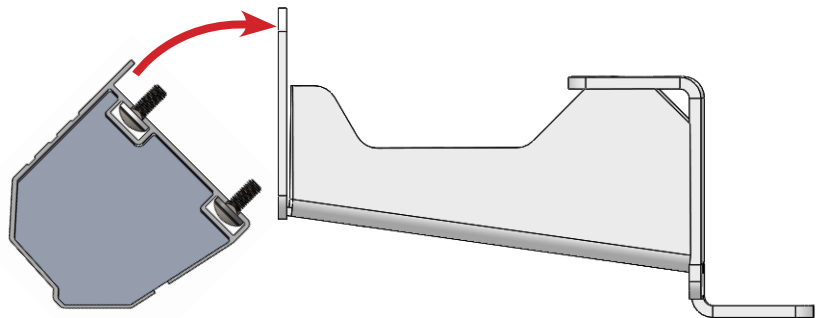
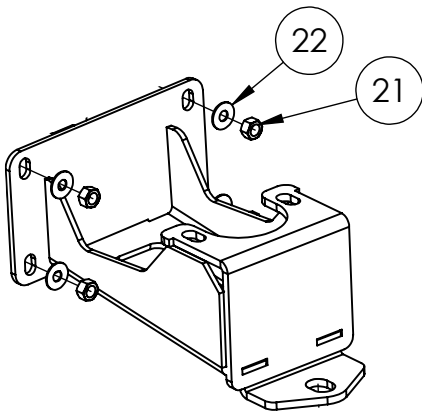
Install 1 Small Double Backup Plate and 1 Single Backup Plate as shown. Position these for the Rear Mount.

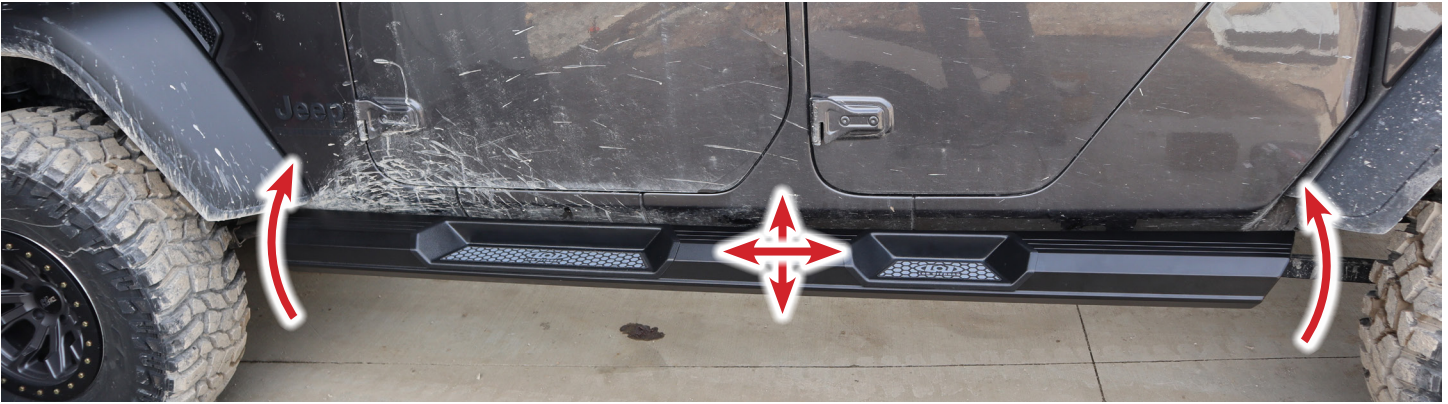


Align the Double Backup Plates as shown, front, center and rear. Line the bolts up with the holes in the Mounts and rotate the Step Assembly into place.



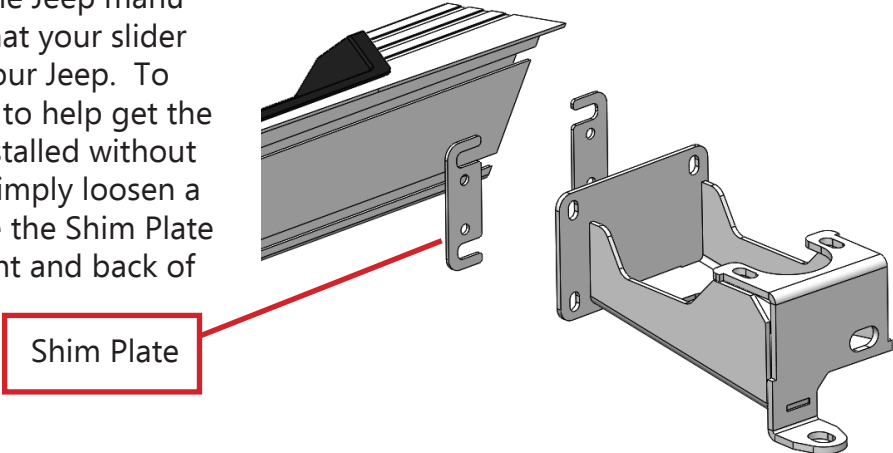
It is helpful to have a friend assist with this step to get all the bolts into the mounting holes at the same time. Once in place, loosely attach with Hex Nuts and Washers






If necessary you can adjust the sliders slightly by rotating it, or moving up/down or forward/backward to get an even gap between back side of your sliders and your Jeep body.

Every Jeep is different and due to the Jeep manufacturing process, you might find that your slider is a little too close to the body of your Jeep. To resolve this we provide Shim Plates to help get the perfect gap. These plates can be installed without completely removing your slider. Simply loosen a few of the mounting bolts and slide the Shim Plate in where needed between the mount and back of the slider body.



****Maintenance****

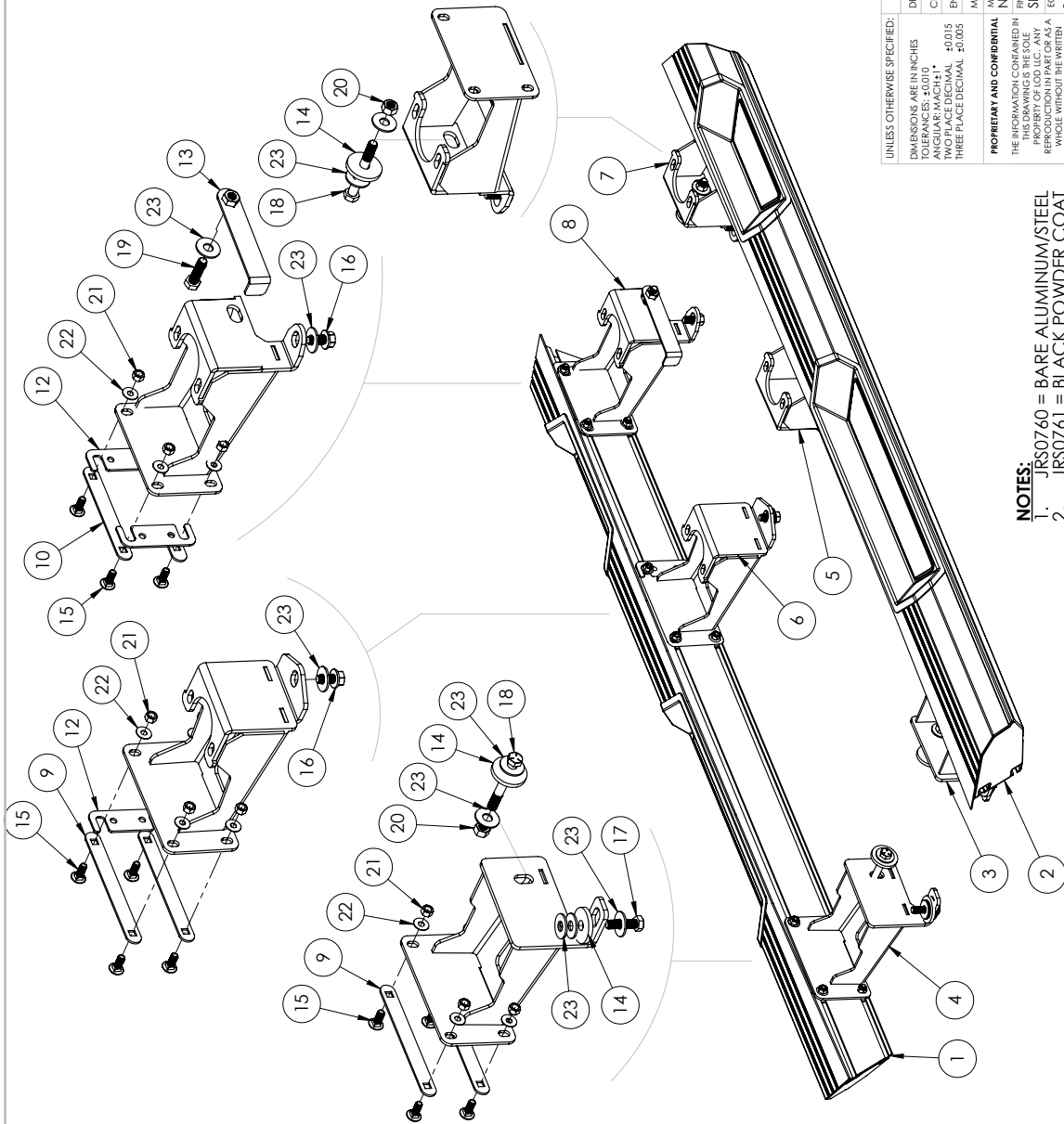
- Periodically check and re-tighten all fasteners.
- Periodically check your Armor Lite Sliders for scratches or dings which can happen over time or after heavy use or highway driving. It is important to address these areas as soon as possible to prevent flaking and corrosion or rust from spreading. We recommend using Rustoleum® brand Black Semi-Gloss Protective Enamel (oil based). Remove loose powder coating, sand the area and clean using alcohol. Apply using a foam brush by dabbing to match the powder coat texture.



ITEM NO.	PART NUMBER	DESCRIPTION	QTY.
1	4JRS1860-13	JL ARMOR LITE STEP ASSEMBLY - PS	1
2	4JRS1860-14	JL ARMOR LITE STEP ASSEMBLY - DS	1
3	4JRS0760-01	JK SLIDER FRONT MOUNT DS	1
4	4JRS0760-04	JK SLIDER FRONT MOUNT PS	1
5	4JRS0760-02	JK SLIDER CENTER MOUNT DS	1
6	4JRS0760-05	JK SLIDER CENTER MOUNT PS	1
7	4JRS0760-03	JK SLIDER REAR MOUNT DS	1
8	4JRS0760-06	JK SLIDER REAR MOUNT PS	1
9	2JRS1860-15	DOUBLE BACKUP PLATE	8
10	2JRS1860-23	DOUBLE BACKUP PLATE SMALL	2
11	2JRS1860-24	SINGLE BACKUP PLATE	2
12	2JRS1860-29	MOUNT SHIM PLATE	6
13	4JRS0754-09	FLAG NUT 1/2-13 ZINC PLATE GR5	1
14	2JRS0754-19	BACKING WASHER / SPACER	5

HARDWARE

ITEM NO.	PART NUMBER	DESCRIPTION	QTY.
15	CB381616ZPGR5	CARRIAGE BOLT 3/8-16 X 1.00 ZINC PLATE GR5	22
16	TR501316ZP	THREAD ROLLER 1/2-13 X 1.00 HEX ZINC PLATE	4
17	HB12150M45ZPCL88	HEX BOLT M12-1.50 X 45mm ZINC PLATE CL8.8	2
18	HB501364ZPGR5	HEX BOLT 1/2-13 X 4.00 HEX BOLT ZINC PLATE GR5	3
19	HB501328ZPGR5	HEX BOLT 1/2-13 X 1.75 HEX BOLT ZINC PLATE GR5	1
20	HN5013ZPGR5	HEX NUT 1/2-13 ZINC PLATE GR5	3
21	HN3816ZPGR5	HEX NUT 3/8-16 ZINC PLATE GR5	22
22	FW3114ZP	FLAT WASHER Ø5/16" X .875" ZINC PLATE	22
23	FW5022ZP	FLAT WASHER Ø1/2" X 1.375" ZINC PLATE	17



UNLESS OTHERWISE SPECIFIED:
 DIMENSIONS ARE IN INCHES
 TOLERANCES: ±0.010
 ANGULAR: MACH±1°
 TWO PLACE DECIMAL .0015
 THREE PLACE DECIMAL .0005
 ENG APPR. _____
 MFG APPR. _____

PROPRIETARY AND CONFIDENTIAL
 THE INFORMATION CONTAINED IN THIS DRAWING IS THE SOLE PROPERTY OF LOD LLC. NO PART OF THIS DRAWING IS TO BE REPRODUCED OR TRANSMITTED IN ANY FORM OR BY ANY MEANS WITHOUT THE WRITTEN PERMISSION OF LOD LLC IS PROHIBITED.

- NOTES:**
 1. JRS0760 = BARE ALUMINUM/STEEL
 2. JRS0761 = BLACK POWDER COAT

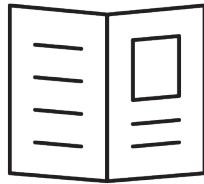
NAME	LOD LLC.
DATE	5/19/2020
DESCRIPTION:	JEEP JK 4DR ARMOR LITE SLIDER
DWG. NO.	JRS0760
REV	A
SCALE:	1:8
SHEET SIZE:	B
SHEET 1 OF 1	



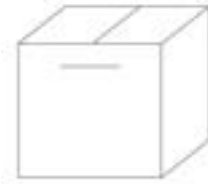
JK Jeep
ARMOR LITE SERIES
JEEP JK 4DR ARMOR LITE
SLIDERS
SHIPPING SHEET - 1

Packaged by:

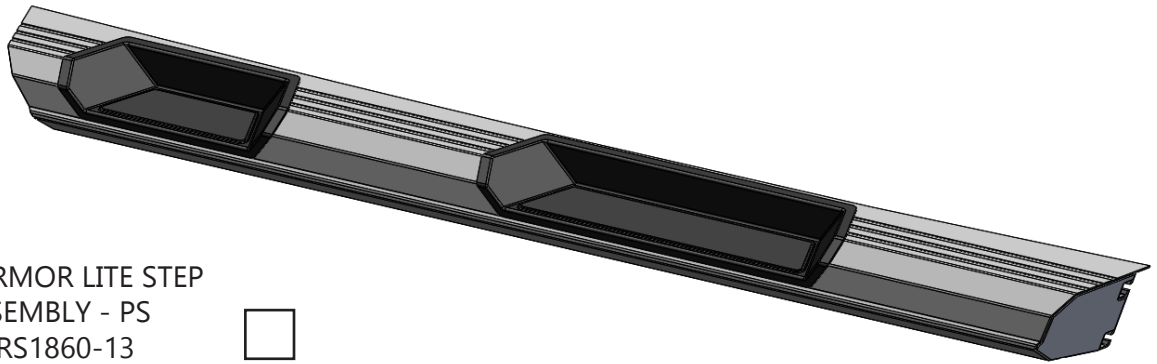
On:



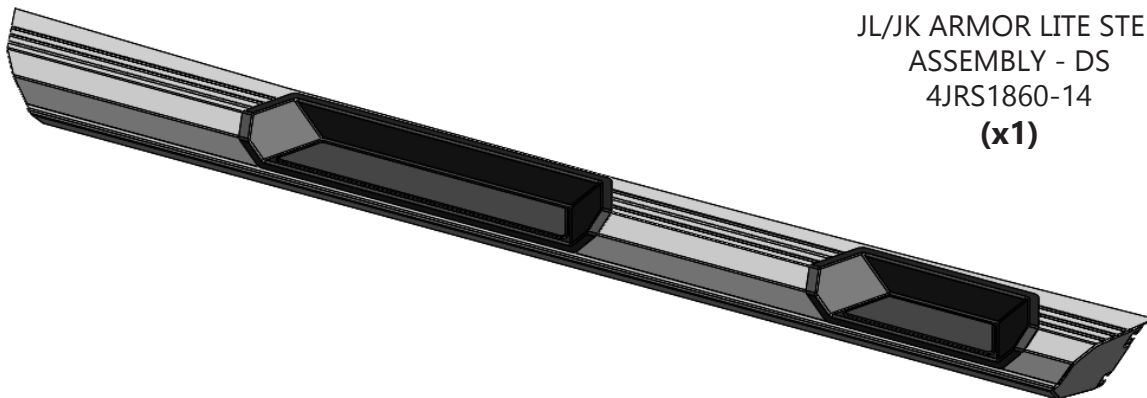
Instruction
Booklet



Hardware Kit
(contents
may vary)

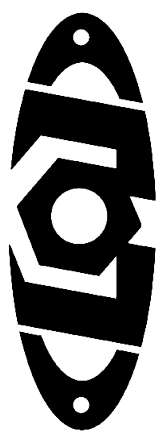


JL/JK ARMOR LITE STEP
ASSEMBLY - PS
4JRS1860-13
(x1)



JL/JK ARMOR LITE STEP
ASSEMBLY - DS
4JRS1860-14
(x1)





JK Jeep
ARMOR LITE SERIES
 JEEP JK 4DR ARMOR LITE
 SLIDERS

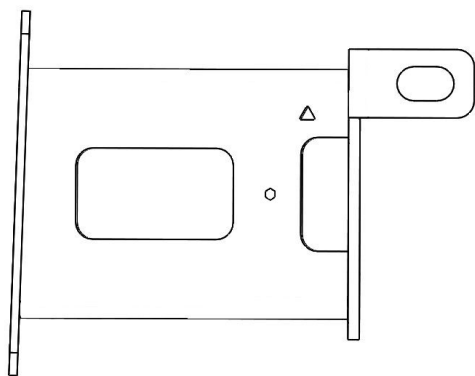
SHIPPING SHEET - 2

Packaged by: _____

On: _____

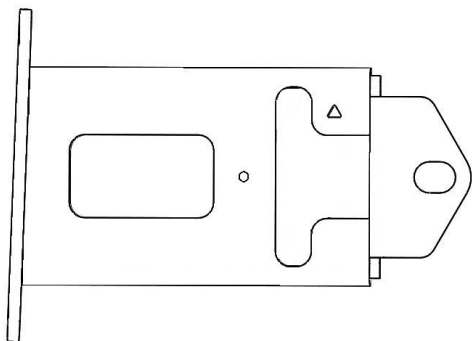
JK SLIDER FRONT MOUNT - PS
 4JRS0760-04

(x1)



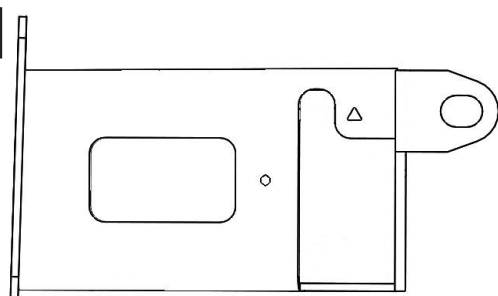
JK SLIDER CENTER MOUNT - PS
 4JRS0760-05

(x1)



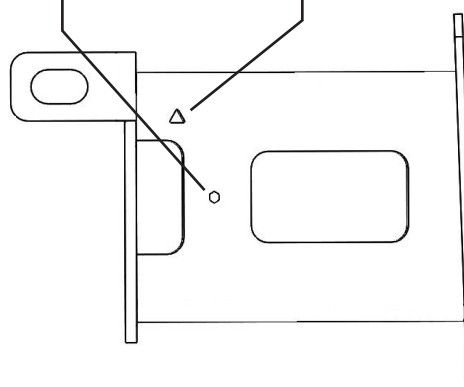
JK SLIDER REAR MOUNT - PS
 4JRS0760-06

(x1)



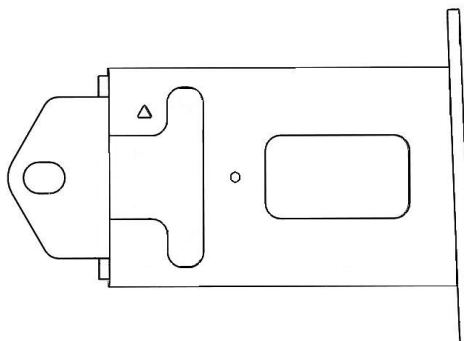
JK SLIDER FRONT MOUNT - DS
 4JRS0760-01

(x1)



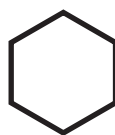
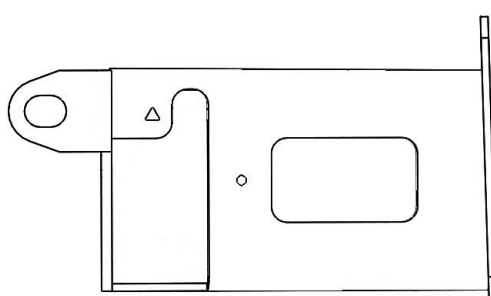
JK SLIDER CENTER MOUNT - DS
 4JRS0760-02

(x1)



JK SLIDER REAR MOUNT - DS
 4JRS0760-03

(x1)



JEEP JK INDICATOR



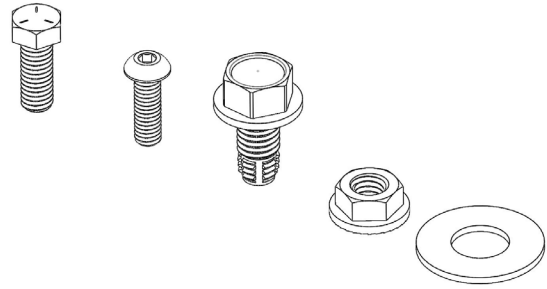
ARROW POINTS TOWARD
 FRONT OF JEEP



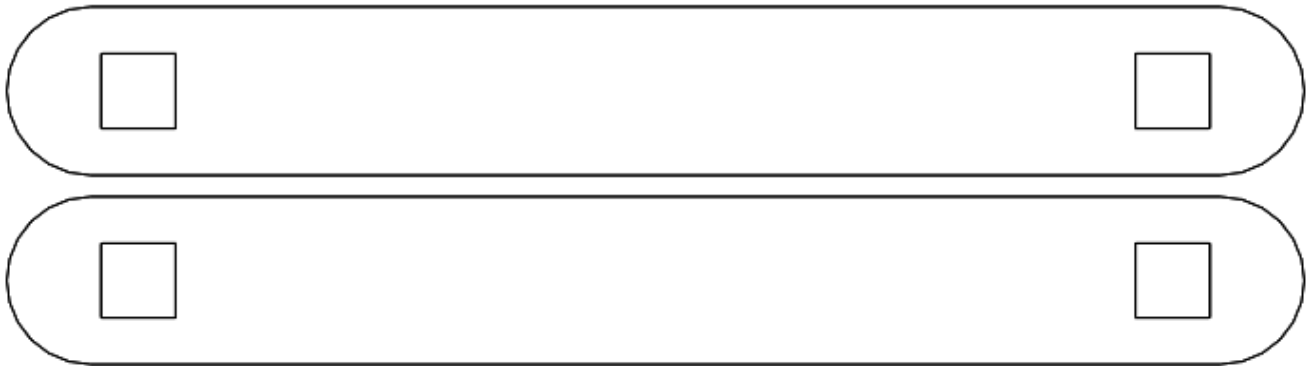
JK Jeep
ARMOR LITE SERIES
JEEP JK 4DR ARMOR LITE
SLIDERS
HARDWARE KIT

Packaged by:

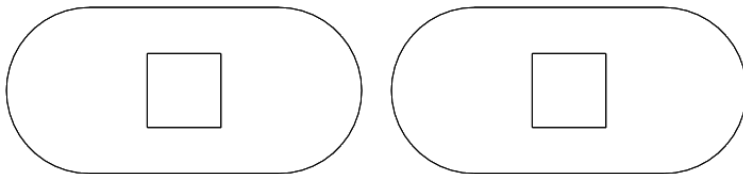
On:



BOLT KIT
(may vary)

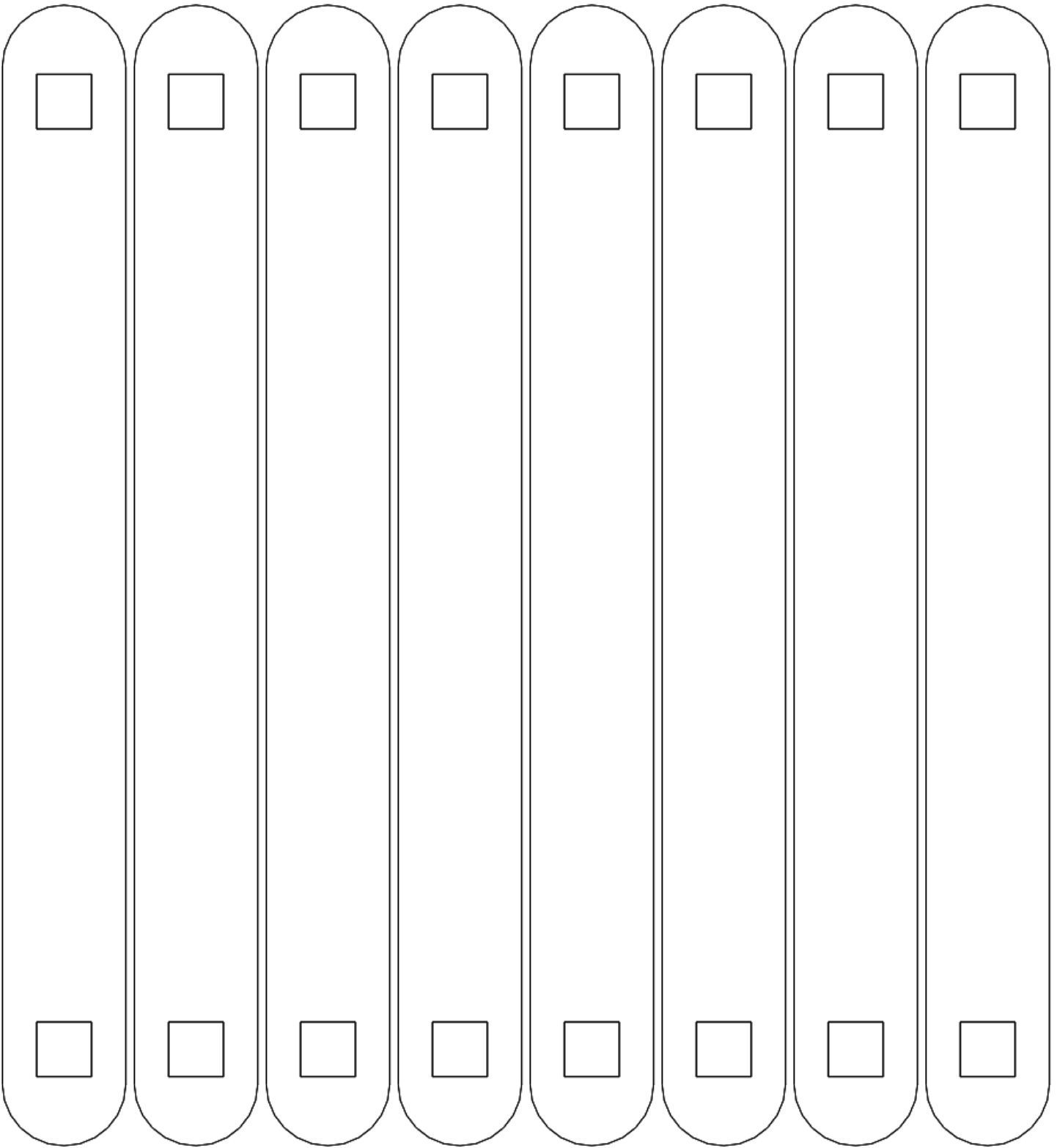


DOUBLE BACKUP PLATE SMALL
2JRS1860-23
(x2)



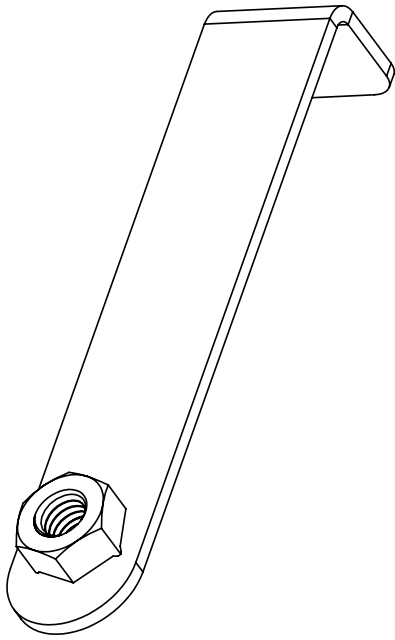
SINGLE BACKUP PLATE
2JRS1860-24
(x2)



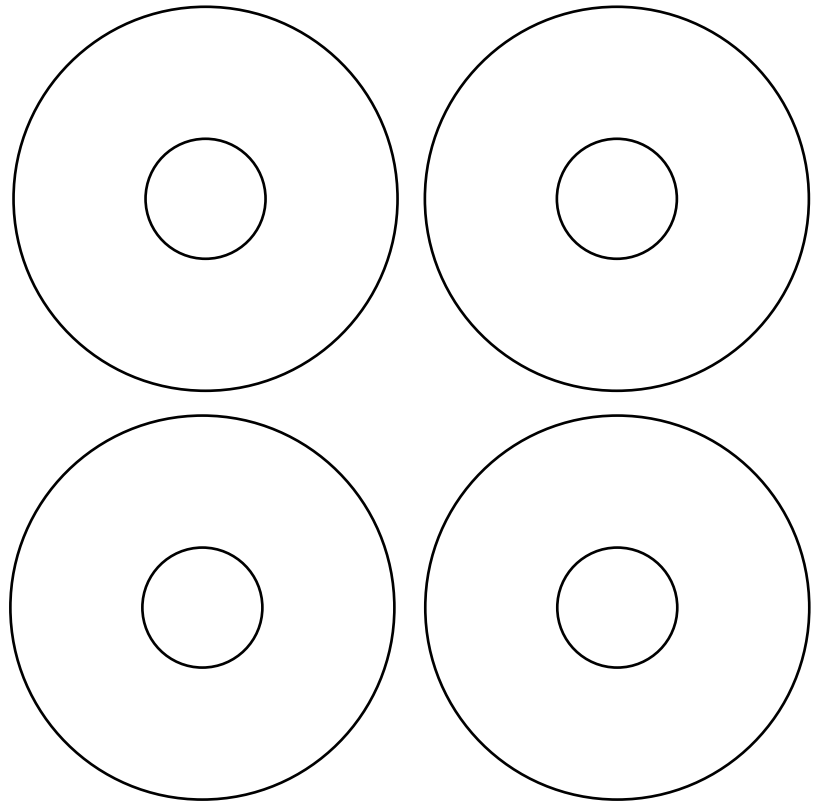


DOUBLE BACKUP PLATE
2JRS1860-15
(x8)

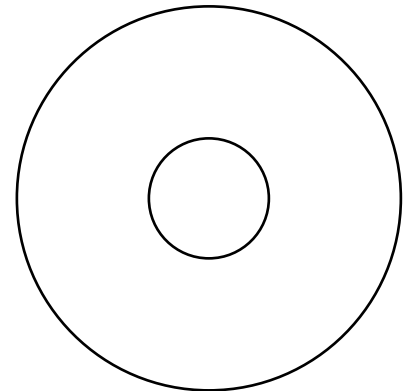




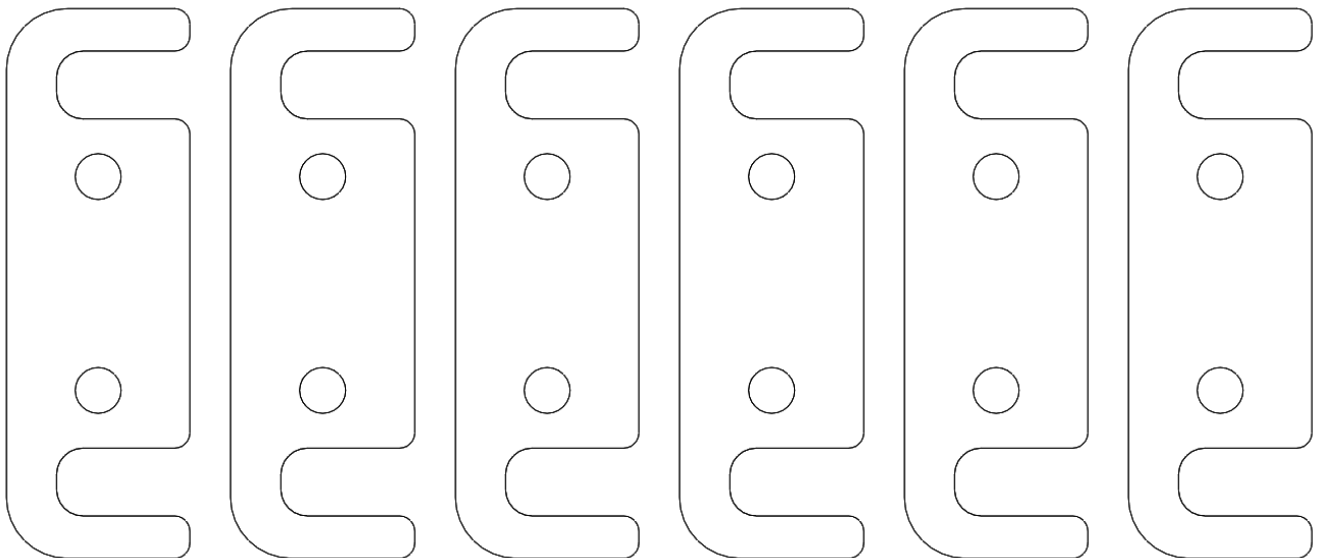
FLAG NUT 1/2-13
4JRS0754-09
(x1)



BACKING WASHER
2JRS0754-19
(x5)



MOUNT SHIM PLATE
2JRS1860-29
(x6)

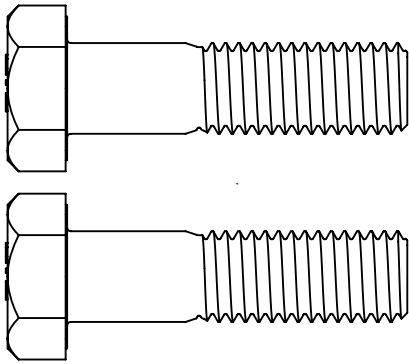




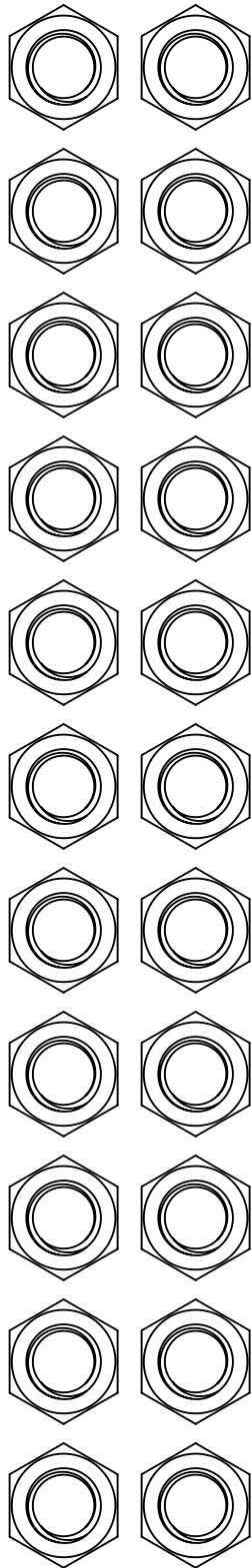
JK Jeep
ARMOR LITE SERIES
 JEEP JK 4DR ARMOR LITE
 SLIDERS
 BOLT KIT

Packaged by:

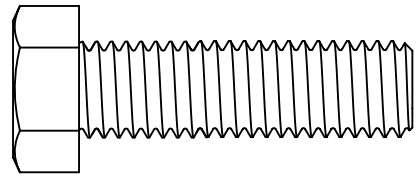
 On:



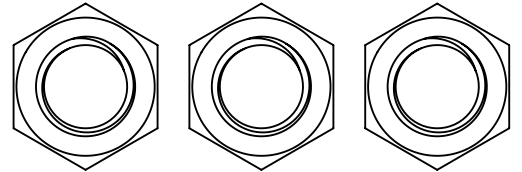
HEX BOLT M12-1.50 X 45MM
(x2)



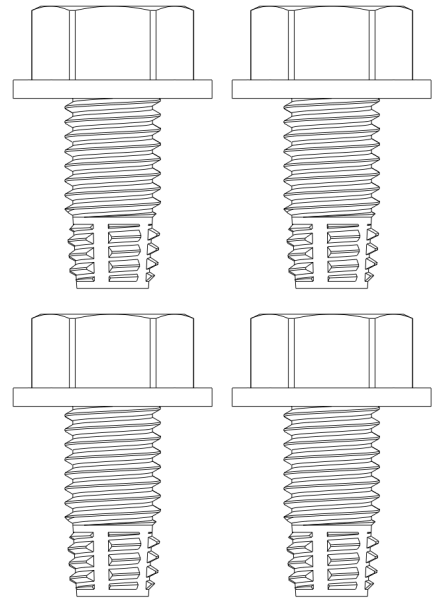
HEX NUT 3/8-16
(x22)



HEX BOLT 1/2-13 X 1.75
(x1)

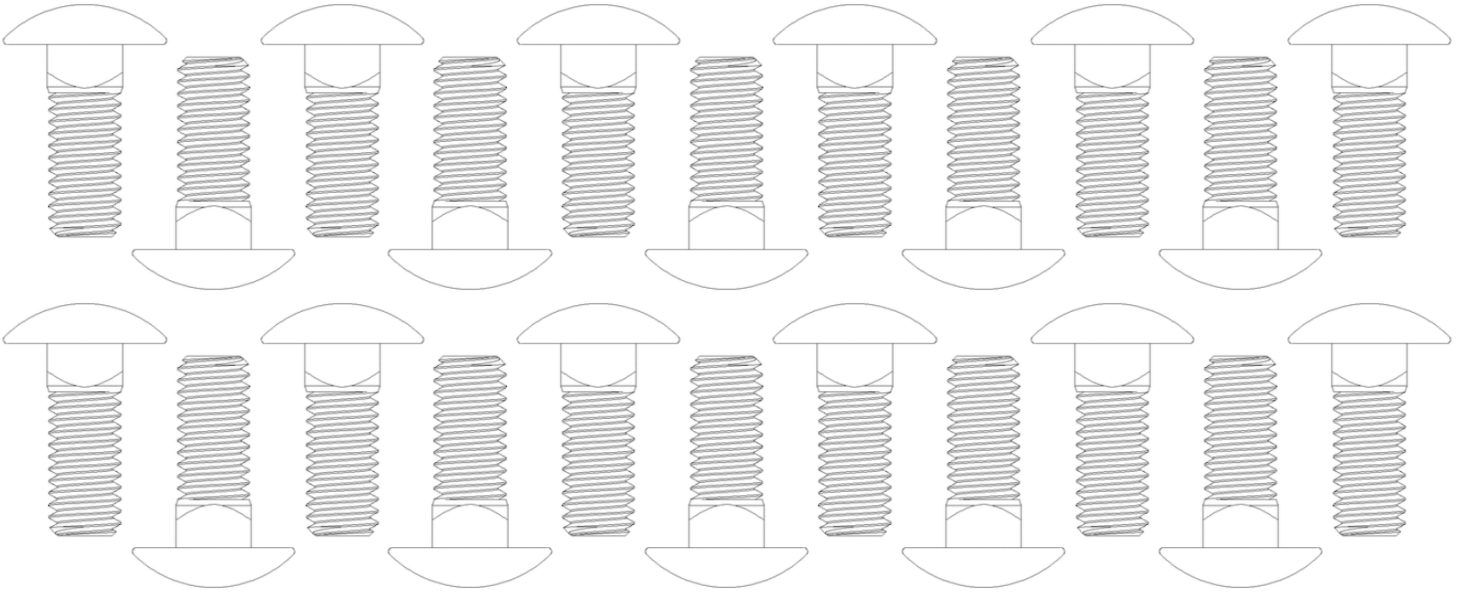


HEX NUT 1/2-13
(x3)

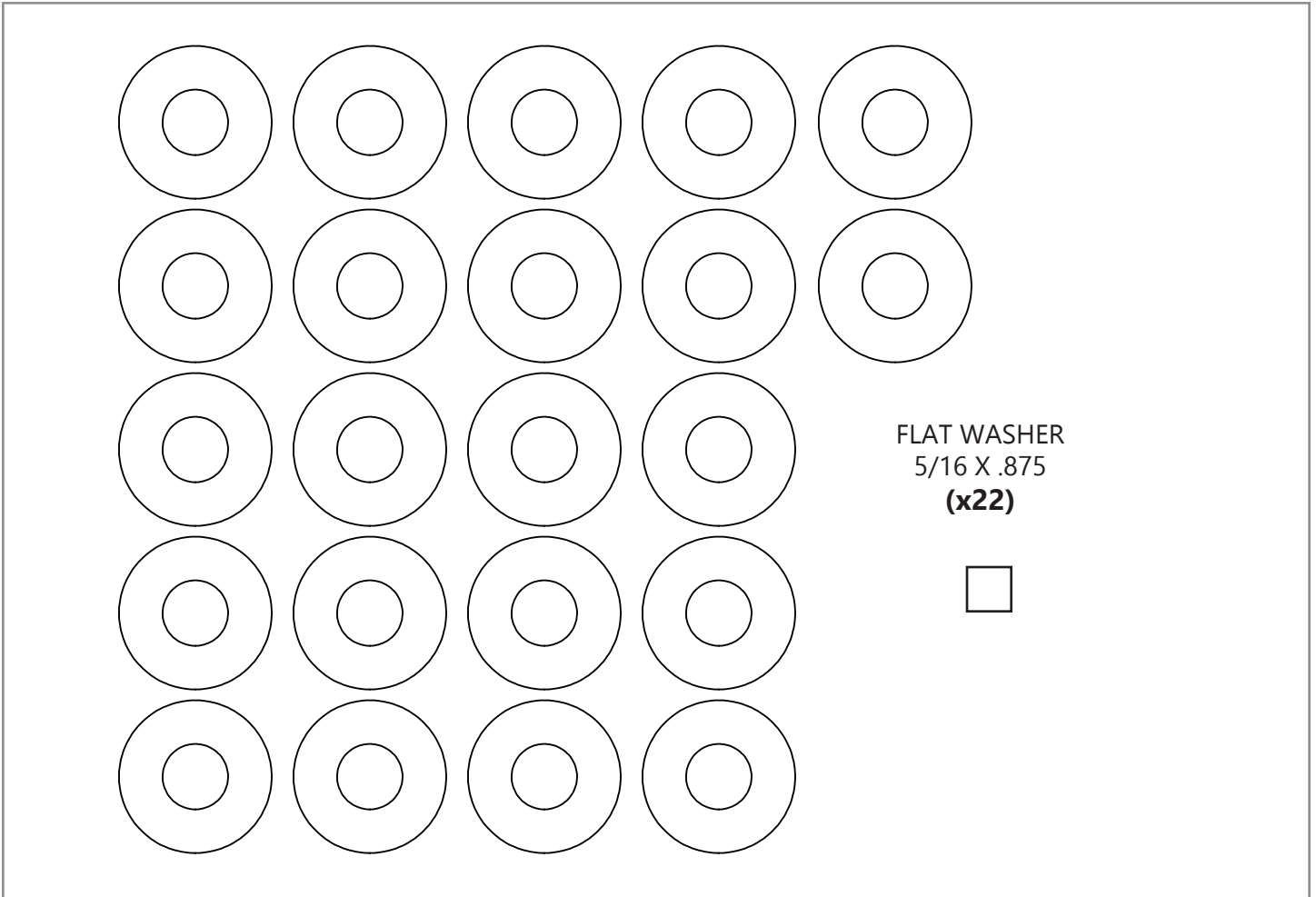


THREAD ROLLER 1/2-13 X 1.00
(x4)





CARRIAGE BOLT 3/8-16 X 1.00
(x22)



FLAT WASHER
5/16 X .875
(x22)



