



INSTALLATION MANUAL
GLADIATOR OVERLANDING RACK
PRODUCT NUMBER: JTOR-01
APPLICATION: 2020 JEEP GLADIATOR



IMPORTANT SAFETY GUIDE | Your safety and the safety of others is very important.

In order to help you make informed decisions about safety, we have provided the following warnings, safety precautions, installation instructions, and other important information to alert you to potential hazards that could hurt you or others.

Please do a job safety analysis before each task to identify potential hazards for your situation and remove/protect against them. Use own good judgment and take your time.

Check packaged materials immediately upon arrival to ensure that all listed parts are included and undamaged.

Read and understand all warnings, safety precautions, and instructions before installing this product.

SENSORS FIELD OF VIEW MAY BE ALTERED WITH USE OF THE REPLACEMENT BUMPER.

WARNINGS

- Failure to observe the following warnings and instructions provided in this manual could lead to severe injury and/or death.
- For professional installation only. Careless installation and/or operation can result in serious injury, death, and/or equipment damage. All liability for installation and use rests with the user or consumer.
- Fab Fours, Inc. only approves installing this product according to these written instructions with the hardware provided. Failure to install according to these instructions will invalidate the warranty. This includes, but is not limited to, using alternative installation methods, hardware, or materials.
- This product is for off road use only.

SAFETY PRECAUTIONS

- Always remove jewelry and wear eye protection.
- Always use extreme caution when jacking up a vehicle for work. Set emergency brake and use tire blocks. Locate and use the vehicle manufacturers designated lifting points. Use jack stands.
- Always use appropriate and adequate care in lifting components into place.
- Always ensure components will remain secure during installation and operation.
- Always wear safety glasses when installing this kit. A drilling operation will cause flying metal chips. Flying chips can cause serious eye injury.
- Always use extreme caution when drilling a vehicle. Always disconnect power before welding. Thoroughly inspect the area to be drilled (on both sides of material when possible) prior to drilling, and relocate any objects that may be damaged.
- Always use extreme caution when welding a vehicle. Thoroughly inspect the area to be welded (on both sides of material when possible) prior to welding, and relocate any objects that may be a fire hazard. When welding in a cab, make sure the interior surfaces are covered (e.g., welding blanket) and a fire extinguisher is at hand.
- Always use extreme caution when cutting and trimming during fitting.
- Always tighten all nuts and bolts securely per installation instructions.
- Always route electrical cables carefully. Avoid moving parts, components that become hot, and rough or sharp edges.
- Always insulate and protect all exposed wiring and electrical terminals.
- Perform regular inspections and maintenance on mounts and hardware.

TABLE OF CONTENTS

- 2 SAFETY / DISCLAIMER
- 3 TABLE OF CONTENTS
- 4 A MESSAGE FROM THE OWNER
- 5 GETTING STARTED
- 6 PROVIDED MATERIAL
- 7 DISASSEMBLY
- 9 INSTALLATION
- 11 CONTACT

A MESSAGE FROM THE OWNER



Fab Fours' was born out of a passion for customizing vehicles and a love of the outdoors. Our engineering team uses the latest 3D design software to turn new product ideas into reality. In our factory, designs come to life with the combination of cutting edge technology for metal cutting and forming and an American workforce that puts its' heart and pride into every product.

From design and manufacturing, to quality and delivery, Fab Fours' mission is to be the market leader for steel truck and jeep accessories. We make sure a quality product is delivered on time, more than expected, better than expected to our customers.

Enjoy your new Fab Fours product. Welcome to the family!

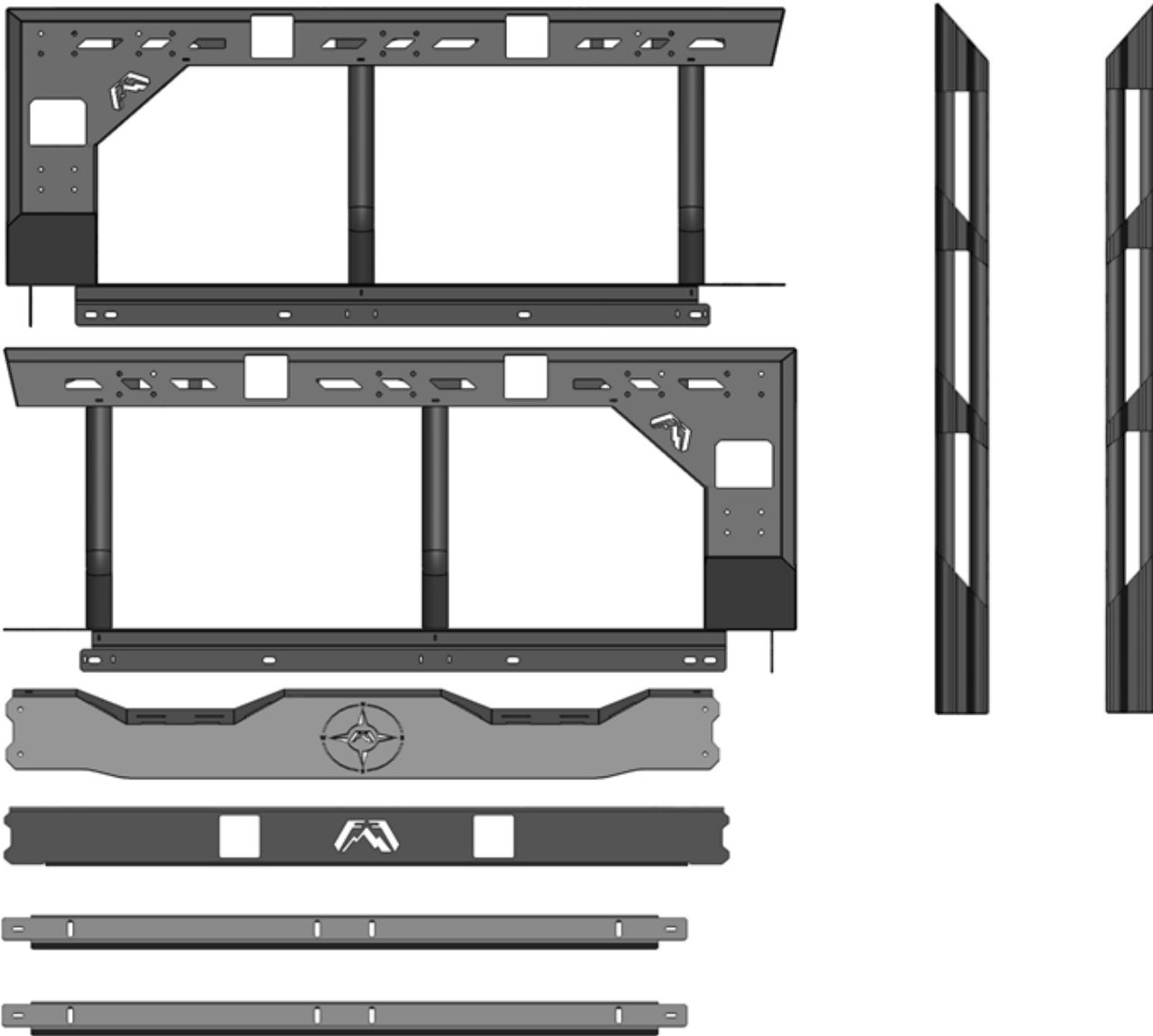
Ereg Higgs

FOUNDER, FAB FOURS

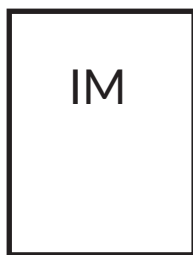
GETTING STARTED

Before you begin the installation process of your new Fab Fours product, we suggest laying out all materials and parts on a pad or protective surface.

Failure to fully account for all components before beginning installation may leave vehicle immobile until part is acquired. Refer to the next pages as an inventory check.



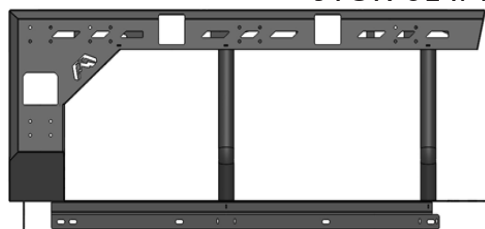
PROVIDED MATERIALS



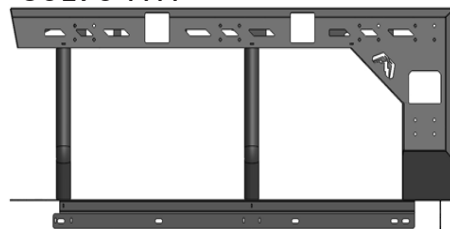
JTOR-01 IM



50190-HW



21944



21945



21948



21949



21950 x2



21946



21947

HARDWARE KIT | 50190

FAB FOURS IDENTIFICATION	COMPONENT DESCRIPTION	QTY
50190-HW	M6 Flat Washer Zinc Steel	8
50190-HW	M6 x 1.0 x25 Bolt Zinc Steel	8
50190-HW	5/16"-18 Hex Nut Yellow Zinc Steel	6
50190-HW	5/16"-18 Bolt Yellow Zinc Steel	6
50190-HW	5/16" Flat Washer Yellow Zinc Steel	12
50190-HW	5/16" Lock Washer Yellow Zinc Steel	6
50190-HW	5/16"-18 Button Head Stainless Steel	16
50190-HW	5/16"-18 Hex Nut Stainless Steel	16
50190-HW	5/16" Flat Washer Stainless Steel	32
50190-HW	5/16" Lock Washer Stainless Steel	16
50190-HW	M8 x 1.25 x 30 Bolt Zinc Steel	2
50190-HW	M8 Fender Washer Zinc Steel	2
50190-HW	M8 Lock Washer Zinc Steel	2

TOOLS REQUIRED

- 10mm socket wrench
- 13mm socket wrench
- 1/2" socket wrench
- 3/16" allen wrench

ASSISTANCE

We recommend two people perform the installation as items are heavy and may need to be held in place while installing.

ORGANIZATION

Disassemble the vehicle where you can catalog and store everything. We suggest labeling and bagging all the OEM bolts when removing from the vehicle. Failure to keep track of parts could lead to an inability to properly reinstall components.

INSTALLATION

NOTE: Save all OEM parts until installation is complete!

1. If truck is equipped with tie down rails: Remove both the passenger and driver side rails using a 10mm socket wrench to remove the five (5) mounting bolts. The rails have sticky patches holding them to the bed and may require some force to remove. (Figure 1)

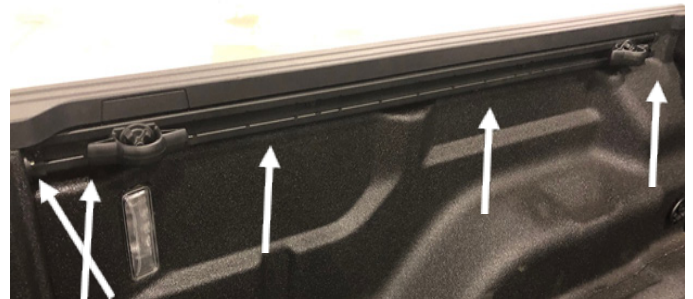


Figure 1

2. With assistance, place the two base assemblies (21944 and 21945) on the bed rails. If your truck is equipped with the tie down rails: Reinstall the rails over the base assemblies using the OEM hardware and 10mm socket wrench. If your truck is not equipped with the tie down rails use the M6 bolts and washers provided along with a 10mm socket wrench to fasten the base assemblies in place (50190-HW). (Figure2)



Figure 2

3. Use a 13mm socket wrench to install the M8 bolts, flat and lock washers into the front flange of the base assemblies (50190-HW). (Figure 3)



Figure 3

4. Take the two tube assemblies (21946 and 21947) and place them on top of the base assemblies (21944 and 21945). Using a 1/2" socket wrench attach the tube assemblies to the base assemblies using the three (3) 5/16" yellow zinc steel bolts, flat, lock washers, and nuts (50190-HW). (Figure 4)



Figure 4

5. Place the rear assembly (21949) between the tube assemblies and use a 1/2" socket wrench with a 3/16" allen wrench to attach six (6) 5/16" stainless steel button head bolts with flat and lock washers and nuts (50190-HW). (Figure 5)

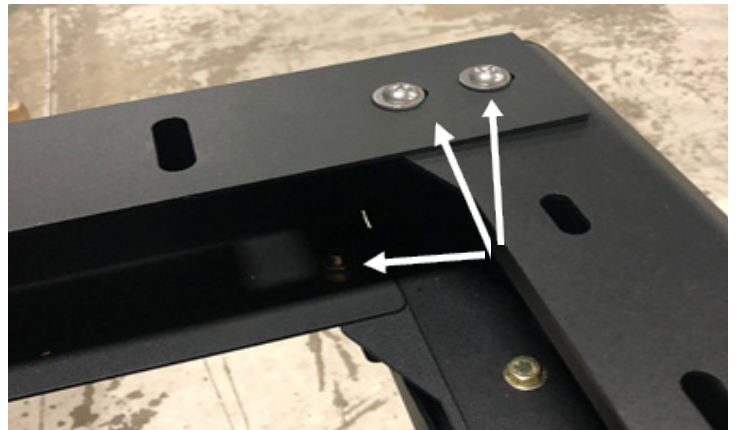


Figure 5

6. Take the front visor (21948) and put it between the two tube assemblies using a 1/2" socket wrench and 3/16" allen wrench to install six (6) 5/16" stainless steel button head bolts with flat and lock washers and nuts (50190-HW). (Figure 6)

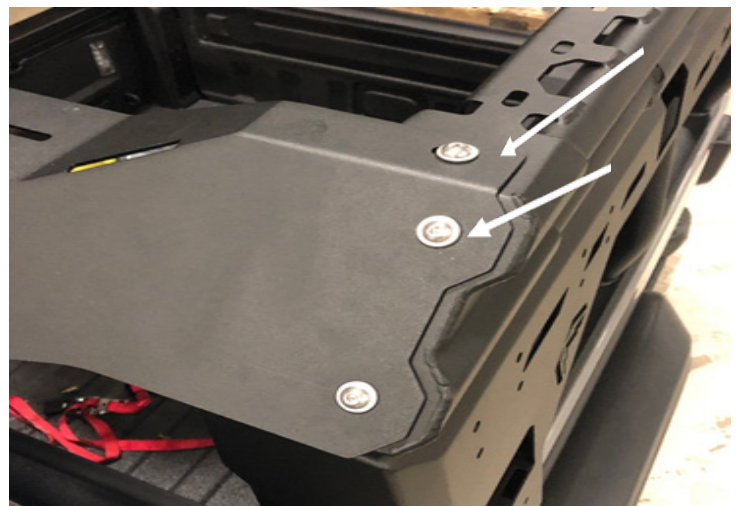


Figure 6

INSTALLATION

7. Place the cross bars (21950) between the tube assemblies using a 1/2" socket wrench and 3/16" allen wrench to install the two (2) 5/16" stainless steel button head bolts with flat and lock washers and nuts (50190-HW). (Figure 7)



Figure 7

8. Fully tighten all mounting hardware between each assembly and the truck.

CONTACT INFORMATION

**FAB FOURS INC.
2213 INDUSTRIAL PARK ROAD
LANCASTER, SC 29720**

PHONE: (803) 416-1100

FAX: 866-574-1423

EMAIL: SUPPORT@FABFOURS.COM

WWW.FABFOURS.COM



**“IF YOU’RE LOOKING FOR MORE OF THE SAME,
THEN YOU’VE COME TO THE WRONG PLACE.”**

- GREG HIGGS

