

American Made = American Jobs



IRON CROSS
AUTOMOTIVE INC.

GP-2000/2200

Jeep Wrangler

GP-2100/2300

Jeep Wrangler

Jeep Rear Bumper

www.ironcrossautomotive.com

Installation Instructions

Hardware	
2	1/2" Frame Locks with Hardware
8	1/2" Stainless Allen Head Bolts
8	1/2" Flat Washers
8	1/2" Lock Washers
8	1/2" Nuts

Bumper Removal

- 1) Remove your factory bumper from the frame by taking out the (2) bolts on each side of the outer frame rail. Make sure to keep these bolts for reinstallation of your new bumper.
- 2) Make sure all wiring is disconnected, remove and discard your rear bumper



IRON CROSS AUTOMOTIVE

4942 E. 66th Street North,
Tulsa, OK 74117

www.ironcrossautomotive.com

Bumper Installation

1) Install the supplied frame lock bolts into the frame rail as shown. **Fig 1.**

2) Install bracket using frame lock and the (2) factory bolts on each side. Hand tighten at this time. Driver side is shown in **Fig 2.**

3) Slide brackets rearward and install rear bumper. Attach your rear bumper using the shackles and remaining hardware. The Allen bolts will go through the shackle mount, then the bumper and finally the brackets. Install the flat washer, lock washer, and then the nut on the backside. **Fig 3.**

4) Align the bumper up and down and side to side. Tighten the bolts going through the shackle mounts to 60 ft/lb.

5) Align the bumper front to rear and tighten the brackets to the frame. The frame lock tighten to 60 ft/lb, and the factory bolts to 30 ft/lb.

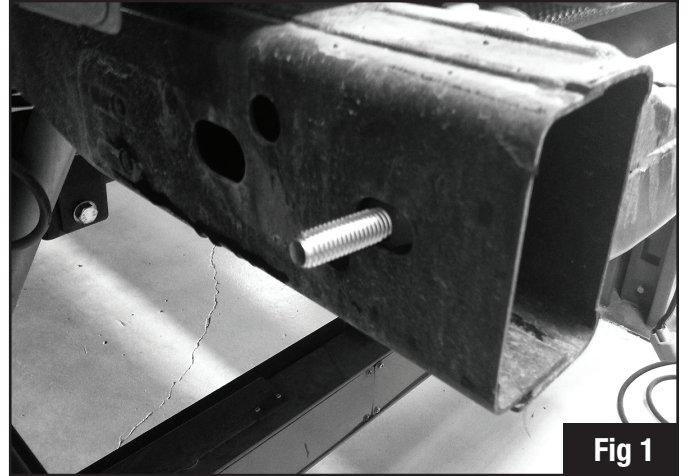


Fig 1

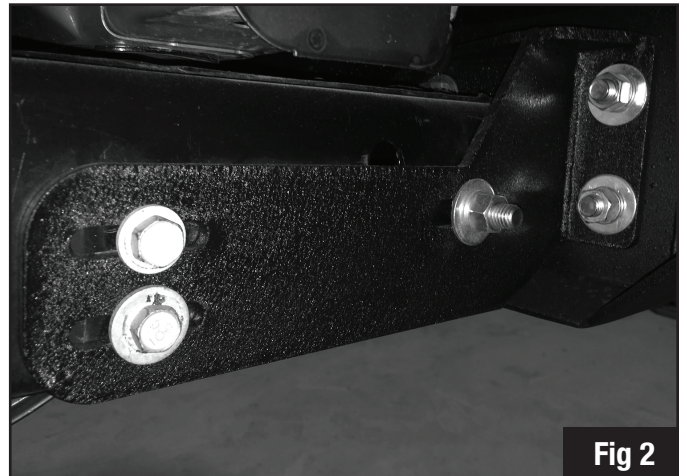


Fig 2



Fig 3



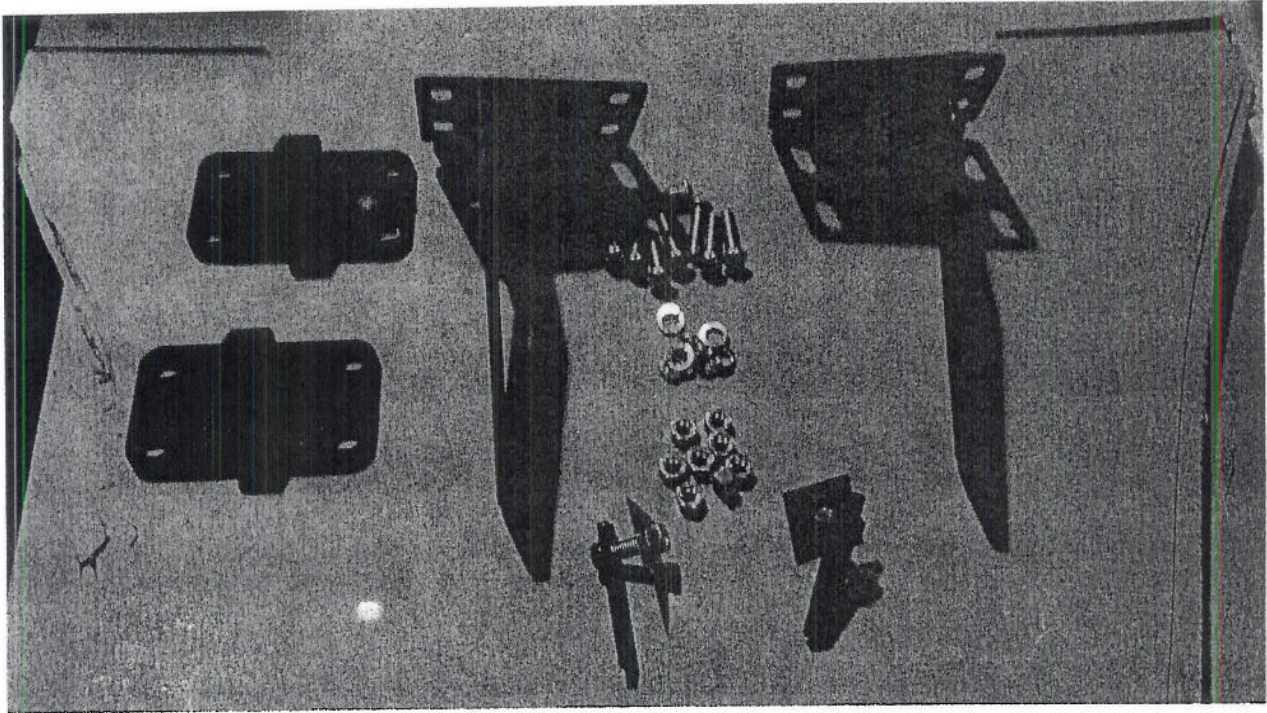
IRON CROSS AUTOMOTIVE

4942 E. 66th Street North,
Tulsa, OK 74117

www.ironcrossautomotive.com

JEEP REAR BRACKET / HARDWARE

GP-2000/2100/2200/2300



RIGHT BRACKET = 1

LEFT BRACKET = 1

D-LUG PLATES = 2

1/2" STAINLESS BUTTON HEAD = 8

1/2" LOCK WASHERS = 8

1/2" NUTS = 8

1/2" FRAME LOCK = 2

1/2 FLATWASHERS - 8