



THE AUTOMOTIVE LIGHTING BENCHMARK

2016-23 TACOMA XB LED TAIL LIGHTS INSTALL GUIDE

WARNING: By reading this document, you agree it is only to be used as an educational guide. Morimoto Lighting nor its dealers make guarantees on any finished results, nor are they to be held responsible for any damage, misuse, or personal injuries. If you are unable to clearly understand and adapt the information below, professional installation is recommended.

PACKAGE CONTENTS



2X TAIL LIGHT ASSEMBLIES



1X BOOST BAR (OPTIONAL)

TOOLS REQUIRED

- 10MM SOCKET OR WRENCH
- 1/4" / 7MM DRILL BIT / DRILL (FOR BOOST BAR)
- ZIP / CABLE TIES (FOR BOOST BAR)

IMPORTANT: If your vehicle is equipped with anything but OEM turn signals (full assemblies, LED bulbs, or otherwise) in the headlights or elsewhere: You may experience a hyper flash and/or problems with the sequential signal setting on these tail lights. This is not a defect in the tail light, and caused by un-matched impedance with your original vehicle settings.

INSTALLATION PROCESS

1. Lower the tailgate. Remove the two (2) 10mm bolts holding in each tail light (Image #1). Pull the tail lights back and away to remove from the truck (Image #2).

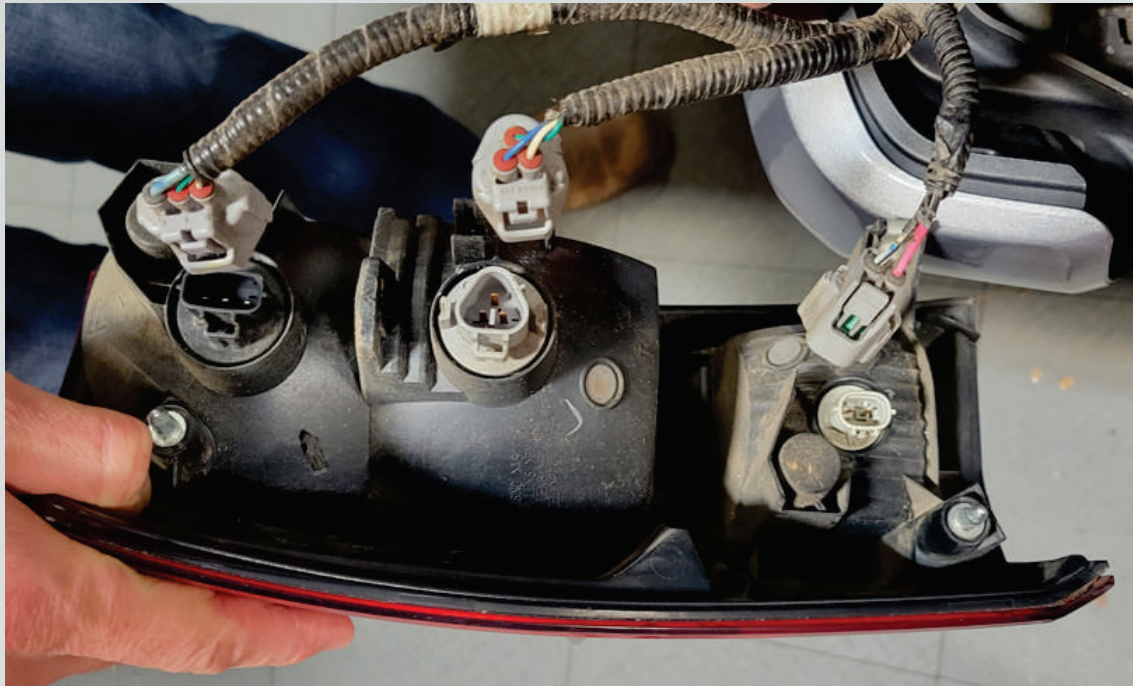


Image #1

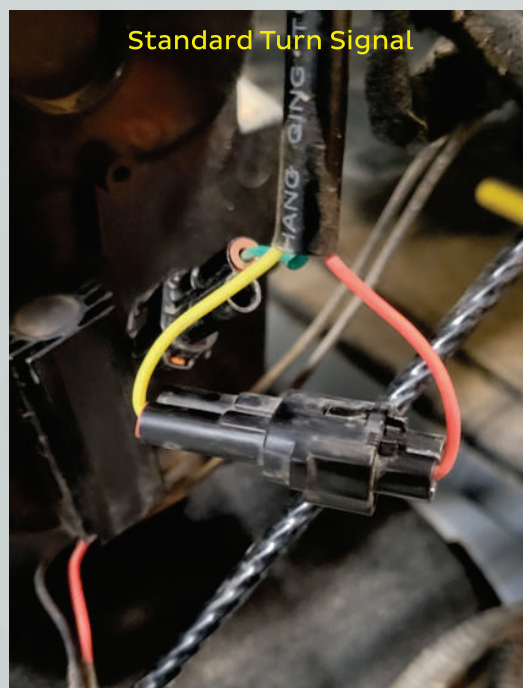


Image #2

2. Disconnect the OEM connectors by pressing the release tabs then sliding the connector off.



3. Determine which style turn signals you would like from your tail lights. Connect red + green for sequential turn signals or red + yellow for standard on/off turn signals.



5. Install the tail lights on to the truck. Reinstall the 10mm bolts and hand tighten.

6. Turn on the truck and go through all modes to confirm the tail lights function properly.

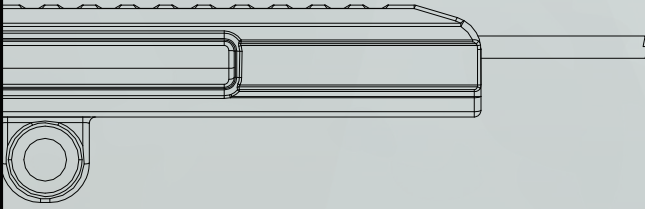
7. Enjoy your new Morimoto XB LED Tail Lights!

-END-

FOR (OPTIONAL) BOOST BAR INSTALLATION, PAGE 4

INSTALLATION PROCESS

BOOST BAR



1. Remove your license plate and bolt in the Boost Bar. Mark on the bumper where the wire needs to go through.



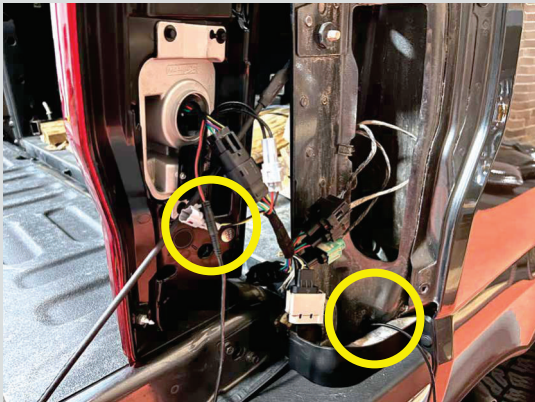
2. Drill a 1/4" hole in your bumper and pass the wiring through. and reinstall your license plate with Boost Bar.



3. Run the wiring behind the bumper along the top, and secure using zip ties.



4. Run the wiring up through the tail light hole and plug into your Passenger Morimoto tail light. Secure remaining wiring with zip ties.



DIRECT CONNECTION TO RIGHT MORIMOTO XB LED TAIL LIGHT

