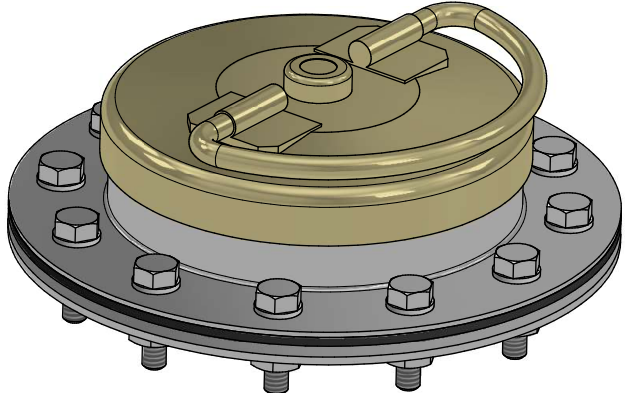
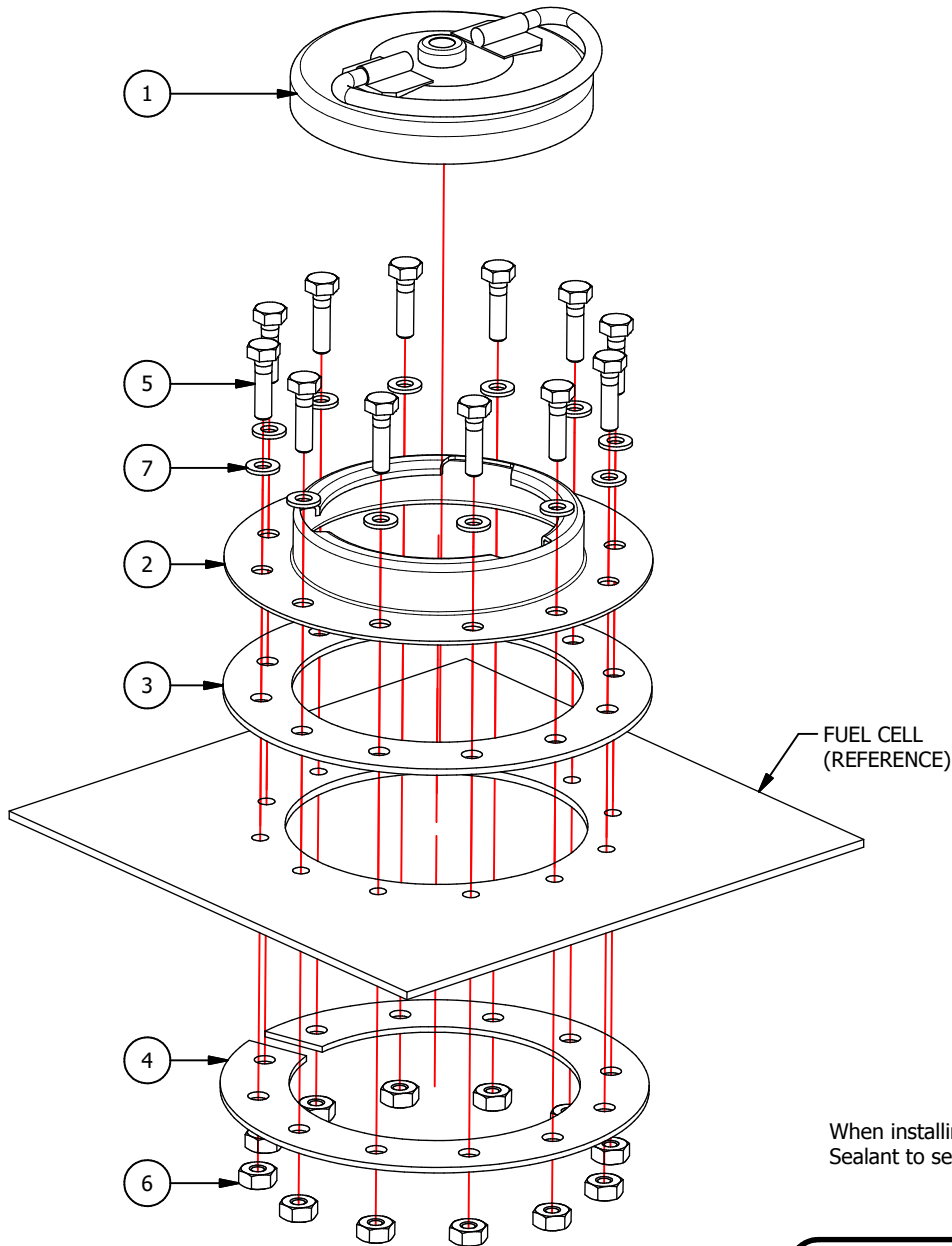


PARTS LIST		
ITEM	QTY	DESCRIPTION
1	1	Filler Cap, Series 600 Bail Handle
2	1	Filler Neck, 12 Hole
3	1	Filler Neck, 12 Hole, Rubber Gasket
4	1	Filler Neck, 12 Hole, Split Ring
5	12	Hex Bolt, 1/4" UNC x 1.0" lg
6	12	Nylock Nut, 1/4" UNC
7	12	Nylon Washer, 1/4"



FILLER NECK & CAP ASSEMBLY
(AS SHIPPED)

When installing the fuel cap assembly, we recommend using Permatex 80016 Form-A-Gasket number 2 Sealant to seal the contact surfaces in place of the gasket if you are using Ethanol based gas.



Dwg/Part No: **Fuel Cells**
 Description: **Filler Neck & Cap Assembly**
 Mat'l:
 Sheet No: **1** of **1**
 Rev No: **0**