



Installation Instructions

Replacement Soft Top Hardware for 1987-1995 Jeep® Wrangler YJ Vehicles Item #15433101



Parts List:

Bow Assemblies (L&R) - Qty 2
Windshield Channel - Qty 1
Side Belt Rail (L&R) - Qty 2
Corner Belt Rail (L&R) - Qty 2
Tailgate Brackets (L&R) - Qty 2
Bow Connectors - Qty 2
Upper Door
Windshield Insert (L&R) - Qty 2
Tailgate Bar - Qty 1
Tailgate Seal - Qty 1

Included Hardware:

#10-24 x 1/2" Phillips Screws - Qty 4
#10-24 Nylock Nuts - Qty 4
#10 Flat Washers - Qty 4
#10 Star Lock Washers - Qty 4
5/16" Torx Screws - Qty 12
5/16" Tapping Plates - Qty 12
5/16" Flat Washers - Qty 12
#8 x 1" Sheet Metal Screw - Qty 2
#8 x 1/2" Sheet Metal Screw - Qty 8
#8 x 1/4" Sheet Metal Screw - Qty 11

Note: There may be extra hardware in package.

Required Tools:

Safety Glasses
Phillips Head Screw Driver
#40 Torx socket and Driver
Pliers
Drill
1/8" Drill Bit (optional)
3/16" Drill Bit (optional)

⚠ WARNING ⚠

Loss of vehicle control involves risk of death or serious injury, particularly to parts of your body not restrained within vehicle. This product is intended for weather protection only and should not be relied upon to contain occupants in the event of an accident or to protect from either ground contact or falling objects. To reduce risk of accident or injury:

- ALWAYS WEAR SEATBELTS
- Always keep head, arms & body parts within vehicle.
- Fully secure or stow the soft top before driving according to instructions. Never try to latch or fold soft top while driving. Do not use if damaged or worn.
- Read and follow all instructions & warnings accompanying this product, in your vehicle owner's manual and Off Road Driving Supplement.

⚠ CAUTION ⚠

RISK OF EYE INJURY. Safety glasses should be worn at all times while installing or maintaining this product.



Important Safety information

Your MasterTop® Replacement Soft Top Hardware is intended to be used with other MasterTop Products to increase the fair weather enjoyment of your off-road capable vehicle. Before installation, please take a moment to review the following safety information and installation instructions. Important safety information is generally preceded by one of three signal words indicating the relative risk of injury. The signal words mean:

⚠ WARNING ⚠

A hazardous situation which, if not avoided, could result in death or serious injury. You CAN be KILLED or SERIOUSLY HURT if you don't follow instructions.

⚠ CAUTION ⚠

A hazardous situation which, if not avoided, could result in minor or moderate injury. You CAN be moderately HURT and also may suffer property damage if you don't follow instructions.

NOTICE

Careful attention is required to this instruction or operation but does generally not relate to personal injury. Damage to your MasterTop product or other property may result if you don't follow instructions.

Before you begin Installation:

We are excited that you have chosen MasterTop for your Replacement Hardware needs. This product is designed to work with several MasterTop products and has been engineered to exacting standards to deliver a long and productive life. When unpacking, check to make sure all parts are included. If any part is missing or broken, please call MasterTop customer service at 720-575-5440.

NOTICE

Before you begin the installation of the replacement hardware, you must first remove all existing hardware/Top from the vehicle. This includes the front Windshield channel which should be replaced when replacing the existing hardware. Also, over time the screw holes on a YJ Windshield may have been enlarged where the enclosed screws will no longer fit. In this case you may need to use the existing screws to install the windshield Channel or purchase new from a local hardware store.

Installation of Soft Top Hardware



Step 1: Windshield Channel Installation

Put on safety glasses. Position the two piece windshield channel on the vehicle lining up the existing screw holes as shown in Fig 1. Once in place, secure the windshield channel using the included 11 #8 x 1/4" Sheet Metal Screws. See Fig 2. Note: If installing the windshield channel to the vehicle for the first time (hard top vehicles) or if the holes do not line up, use the windshield channel as a template to drill 1/8" holes for installation



Step 2A: Install Upper Door Windshield Inserts

IF you are replacing current soft top hardware, locate the upper driver's side upper door windshield insert and position it over the existing holes drilled into the windshield. See Fig 3. Using a Phillips head screwdriver, install four (4) #8x 1/2" Sheet metal screws through the existing holes securing the windshield insert to the windshield. See Fig 4. Repeat this procedure for the passenger side. Go to Step three.

⚠ WARNING ⚠

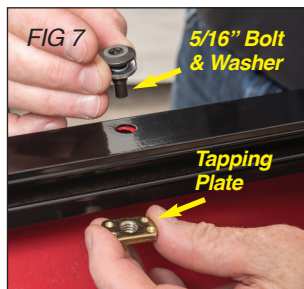
Make sure the Windshield Header and installation bolts are fully secured and tightened. Failure to fully tighten the bolts may cause the header to come off while driving.



Installation of Soft Top Hardware



Step 2B: Install Upper Door Windshield Inserts
IF you are installing soft top hardware for the first time, Locate the upper driver's side upper door windshield insert and position it over the windshield flange lining up the horizontal reinforcement with the top of the flange. See Fig 5. Using the Windshield insert as a template, mark and drill four (4) 1/8" holes through the windshield flange per side. See fig 6. Using a Phillips head screwdriver, install four (4) #8x 1/2" Sheet metal screws through the recently drilled holes securing the windshield insert to the windshield. See Fig 4. Repeat this procedure for the passenger side.



Step 3: Side Belt Rail Installation
 Locate the driver's side Belt Rail assembly, (4) 5/16" Torx Bolts, (4) 5/16" Washers and (4) 5/16" Tapping plates. Place the side Belt Rail assembly over the top of the body tub lining up each hole with the factory holes in the body tub rail. As shown in Figs 7 & 8, secure the side belt rail with the bolt, washer and then the tapping plate under the body tub lip in all four hole locations. Repeat the above on the passenger side of vehicle.



Step 4: Corner Belt Rail Installation
 Locate the driver's side corner belt rail assembly, (2) 5/16" Torx Bolts, (2) 5/16" Washers and (2) 5/16" Tapping plates. Place the corner Belt Rail assembly over the top of the body tub lining up each hole with the factory holes in the body corner rail. See Fig 9. As shown above in Fig 7, secure the side belt rail with the bolt, washer and then the tapping plate under the body tub lip in all two hole locations. Repeat procedure on the passenger side of vehicle. See Fig 10



Step 5a: Tailgate Bracket Installation
IF you are replacing current soft top hardware, locate the passenger and Drivers side Tailgate Brackets, (4) #10 -24x 1/2" Phillips machine screws, (4) #10 star lock washers, (4) #10 flat washers and (4) #10 -24 Nylock nuts.

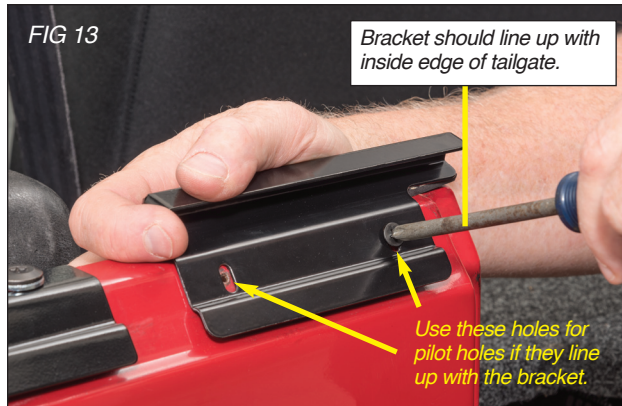
Take the passenger side tailgate bracket and line it up with the existing holes in the rear of the body tub. If the holes line up, use these holes as pilot holes to drill two 3/16" holes. Install the Tailgate bracket using the machine screws, then the star lock washer then the flat washer on the outside of the bracket and the Nylock nut on the inside of the body tub. See Fig 11 & 12. Tighten and repeat this procedure on the Driver's Side.

NOTICE

Make sure when drilling that all wiring is moved away from the drill site. Failure to move the wiring can cause damage to your vehicles electrical system.



Installation of Soft Top Hardware

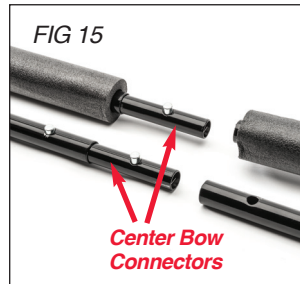
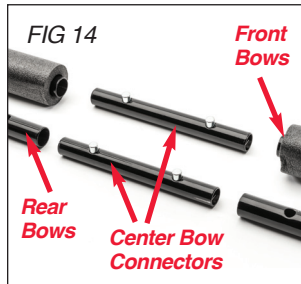


Step 5b: Tailgate Bracket Installation

IF you are soft top hardware for the first time, Locate the passenger and Drivers side Tailgate Brackets, (4) #10 - 24x 1/2" Phillips machine screws, (4) #10 star lock washers, (4) #10 flat washers and (4) #10 - 24 Nylock nuts. Take the passenger side tailgate bracket and line it up with the edge of the inside of the tailgate as shown in Fig 13. Using the tailgate bracket as a template, mark and drill two 3/16" holes. Install the Tailgate bracket using the machine screws, then the star lock washer then the flat washer on the outside of the bracket and the Nylock nut on the inside of the body tub. Tighten and repeat this procedure on the Driver's Side.

NOTICE

Make sure when drilling that all wiring is moved away from the drill site. Failure to move the wiring can cause damage to your vehicles electrical system.



Step 6: Front and Rear Bow Assembly

Locate the left and right bow assemblies and (2) center bow connectors. Lay the bow assemblies on a soft surface lining up the two assemblies' top and bottom tubes with the bow connectors in-between each bow. See Fig 14. Attach the bow connectors to the center bows lining up the push buttons to the holes in the front and rear bows. Note: It will be helpful to pull back the foam on the front bows to expose the holes in the bows to line up the push buttons. See Fig 15.

NOTICE

Steps 7 & 8 Will be easier with the help of a second person.



Step 7: Attach Bows to Side Belt Rails

Slide the ends of the front and rear bow assemblies into the tracks located on the inside of the side belt rails. These ends should be slid in from the rear of the vehicle towards the front of the vehicle and if possible, both driver's and passenger sides should be slid in together to prevent binding. See Fig 16. Once the bow assemblies are slid into the side belt rail tracks, locate and insert the side rail pin into the pre-drilled hole on the top of the side belt rail. See Fig 17.

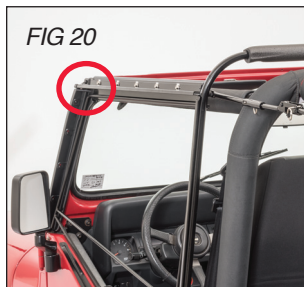


Step 8a: Attach Bows to Windshield Inserts

Unfold the flat vertical and horizontal stamping and slide the front bow (with foam) forward raising the horizontal over door surround towards the front windshield. The front and rear bows should lock into the notch in the belt rail. See Figs 18 & 19.

See continuation of step 8 on next page.

Installation of Soft Top Hardware



Step 8b: Attach Bows to Windshield Inserts

With the bow assemblies in place, insert the plastic locking tab over the windshield inserts large pin and slide the tab towards the rear of the vehicle locking the over door surround in place. See Figs 20 & 21. Repeat procedure on opposite side of vehicle.

⚠ WARNING ⚠

Make sure the upper door rail is securely locked into place prior to installing a soft top or driving. Failure to do so may cause personal injury or damage to the vehicle/soft top if it is not locked into place.



Step 9: Secure Tailgate Weather Strip

Your MasterTop Tailgate bar utilizes an oversized bulb seal that is attached to the tailgate rather than on the tailgate bar itself. This seal will provide extra sealing capability during inclement weather.

Open the tailgate. Locate the weather seal and starting at the hinge side of the tailgate firmly push down the weather seal onto the upper tailgate lip securing it all the way across the length of the tailgate. See Fig 23.



Step 10a: Using Adjustable Spreader Bar

Your MasterTop Soft top hardware features an up-upgraded adjustable Spreader bar to help tighten your soft top during warm weather and if the top has stretched.

To Release the spreader Bar Tension: with the soft top hardware/top in the up position, remove the two pins inserted in the spreader bar. Pull down on the center of the spreader bar to release the tension on the top. See Fig 24, 25 & 26.

See next page for additional adjustments.



Installation of Soft Top Hardware



Step 10b: Tighten or Loosen Top Tension

With the Spreader bar in the up position, remove the front pin. Rotate the handle forwards or backwards to tighten or loosen the top. Repeat on the opposite side to make sure the top is tensioned equally. See Fig 27.



Step 11: Securing Hardware Stack

Your MasterTop hardware has two elastic straps installed on the side of the rear bow assembly. These straps can be used to secure the soft top hardware when it is folded down. Fold the straps from the inside out and attach the plastic piece at the end of the elastic into the belt rail as shown in Fig 28.





Summer Soft Tops & Accessories

Introducing MasterTop®

High Quality Soft Accessories Custom Made for Jeep® Wrangler!

MasterTop is the most exciting new entry into the Jeep® accessories market with a wide assortment of superior quality products designed to maximize your Jeep experience. MasterTop is unlike existing companies who have switched to imported materials of average quality for their products to increase profits while subtracting real value. Savvy Jeepers have noticed. Starting in the summer of 2016 MasterTop was created to counter this negative trend and offer modern Jeep Wrangler owners only highest quality products, sold through select Jeep accessory retailers. Based in Golden, Colorado, MasterTop's staff has decades of experience in both original equipment and Jeep aftermarket manufacturing and product development. This expertise combined with North American manufacturing and using only the finest materials make MasterTop the new standard for knowledgeable Jeepers.



The MasterTop Quality Commitment:

- Every MasterTop Summer Accessory has been engineered to ensure the best fit and performance of any product on the market today.
- Only MasterTop Black Diamond Summer Accessories use heavy duty 28oz OEM Approved Sail Cloth material.
- MasterTop fabric Summer Accessories use only original equipment approved fabrics in their construction*.

**Excludes Mesh products for which there is no OEM approved standard.*

MasterTop Summer Soft Tops Include:

-  EASY ON/EASY OFF DESIGN
-  GRAB HANDLE FRIENDLY DESIGN
-  NO DRILL INSTALLATION
-  DURABLE OEM APPROVED TOP FABRICS
-  PROUDLY CONSTRUCTED IN NORTH AMERICA
-  INSTALLATION REQUIRES USE OF A NO DRILL WINDSHIELD HEADER CHANNEL



ShadeMaker™ Mesh Tops



Complete product line available for all Jeep Wrangler 1987-2017

For more information and updates
visit mastertop.com





Limited 3 Year Warranty

Your MasterTop® accessory is covered by the following Limited Warranty provided exclusively by MasterTop, Inc., 420 J Corporate Circle, Golden, CO 80401.

This Limited Warranty is the only warranty made in connection with your purchase. MasterTop neither assumes nor authorizes any vendor, retailer or other person or entity to assume for it any other obligation or liability in connection with this product or Limited Warranty. This Limited Warranty does not apply and is not cumulative to any accessory or part distributed by any MasterTop distributor for which the Manufacturer provides a separate written warranty.

What is Covered: Subject to the terms, exclusions and limitations herein and with respect only to MasterTop branded accessories first sold in the United States, MasterTop warrants to the initial retail purchaser only that your MasterTop accessory shall be free of defects in material and workmanship; **for a period of 3 years from date of initial retail sale.**

All other warranties are hereby disclaimed, except to the extent prohibited by applicable law in which case any implied warranty of merchantability or fitness for a particular purpose on this product is **limited to 3 years from date of initial retail sale.** MasterTop reserves the rights to: (a.) require invoice or other proof your product is within the terms of this Limited Warranty as a condition of warranty service and, (b.) make future revisions to this product and Limited Warranty without prior notice or obligation to upgrade your product.

What is Not Covered: Your MasterTop Limited Warranty does not cover products or parts MasterTop determines to have been damaged by or subjected to: (a.) installation damage, alteration, modification, failure to maintain or attempted repair or service by anyone not authorized by MasterTop, (b.) normal wear and tear, cosmetic damage or damage from water immersion, (c.) Acts of God, accidents, misuse, negligence, inadequate mounting or impact with vehicle(s), obstacles or other aspects of the environment, (d.) theft, vandalism or other intentional damage, (e.) fleet, rental or commercial use, (f.) use in competition or racing.

Remedy Limited to Repair/Replacement: The exclusive remedy provided hereunder shall, upon MasterTop inspection and at MasterTop's option, be either repair or replacement of product or parts (new or refurbished) covered under this Limited Warranty. Customers requesting warranty consideration on MasterTop Products should first contact MasterTop to obtain a RGA number (720-575-5440). All labor, removal, shipping and installation costs are customer's responsibility.

Other Limitations - Exclusion of Damages - Your Rights Under State Law:

In consideration of the purchase price paid, neither MasterTop nor any independent MasterTop distributor /licensee are responsible for any time loss, rental costs, or for any incidental, consequential, punitive or other damages you may have or incur in connection with any part or product purchased. Your exclusive remedy hereunder for covered parts is repair/replacement as described above.

This Limited Warranty gives you specific rights. You may also have other rights that vary from state to state. For example, some states do not allow limitations of how long an implied warranty lasts and/or do not allow the exclusion or limitation of incidental or consequential damages, so the limitations and exclusions herein may not apply to you.

©MasterTop, Inc. 2017. All Rights Reserved. The term MasterTop® is a Registered Trademark of MasterTop Incorporated, Registered in U.S. Patent and Trademark Office.

www.MasterTop.com

Part #941017.01 Version 8.4.17 LTR

