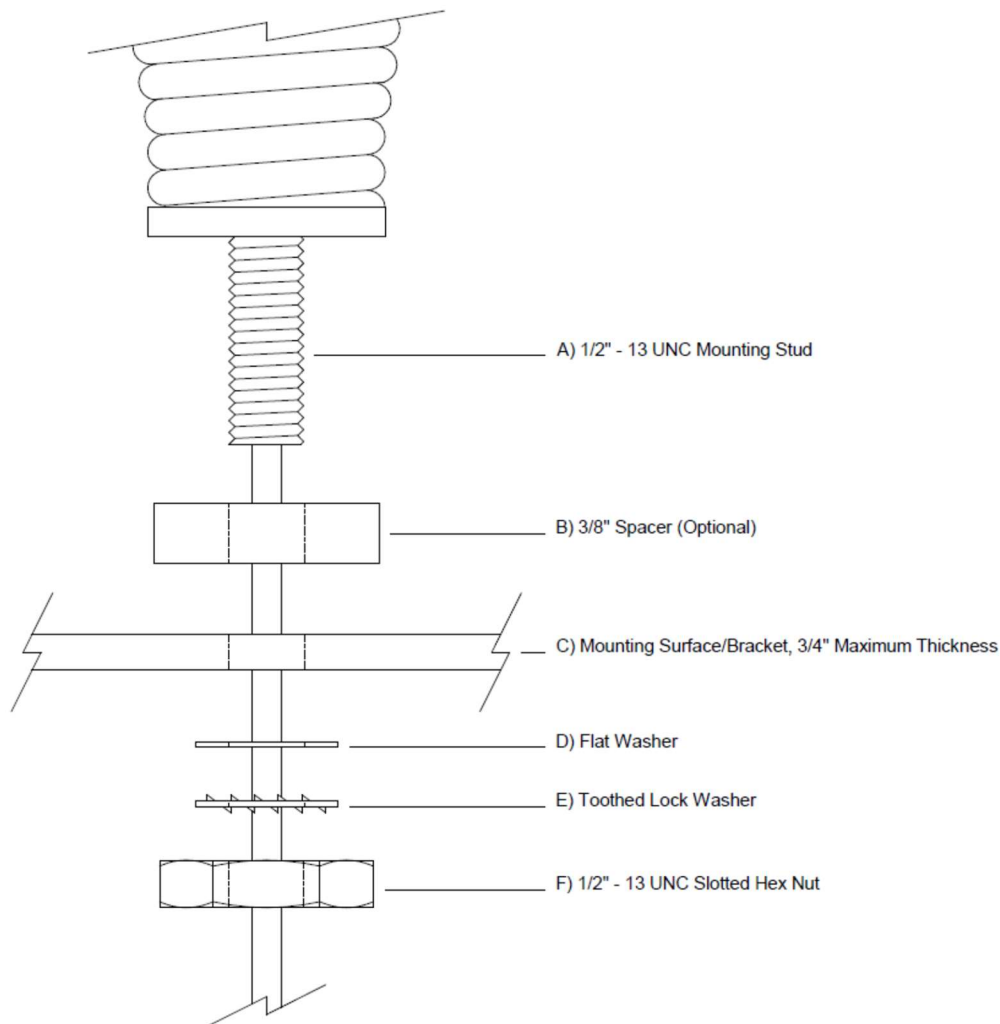


4/26/2023

## MXAT04 and MXAT05 Assembly Diagram



1. The MXAT04 and MXAT05 are designed for **substantial** mounting brackets or surfaces up to 3/4" thick.
2. The MXAT04 and MXAT05 are designed to be installed in a 1/2" hole.
3. Part B, 3/8" spacer, is optional for mounting brackets or surfaces up to 3/8" thick. Part B, 3/8" spacer, should be removed for brackets or surfaces more than 3/8" thick.
4. Remove the FME to PL259 adapter on the end of the coaxial cable so the washers and hex nut can be slid off the coaxial cable. Also remove the 3/8" spacer, Part B, if not being used.
5. Route the coaxial cable from the topside through the mounting hole in the bracket or surface, Part C.
6. Slide the flat washer, lock washer and hex nut, Parts D, E and F, back on the coaxial cable in the order shown.
7. Hold the antenna assembly in position while tightening the hex nut, Part F. Maximum torque 35 lb-ft.
8. Finish routing the coaxial cable through the vehicle to the radio, before reinstalling the FME to PL259 adapter.