



ORACLE LIGHTING

PRE-RUNNER GRILL KIT

PART #5871

INSTALLATION GUIDE

FOR TECH SUPPORT, PLEASE CONTACT US @ 1-800-407-5776

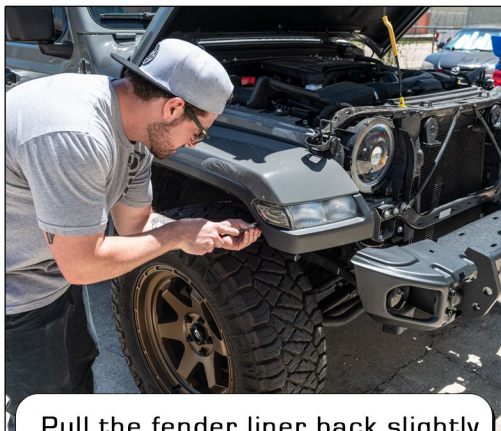
VIDEO INSTALL



TOOLS NEEDED: PANEL TOOL / WIRE CRIMPS / 8MM SOCKET / 10 MM SOCKET/ SPACERS



Use a panel tool or flathead to remove the retainer clips across the top. Firmly pull bottom of grill outward.



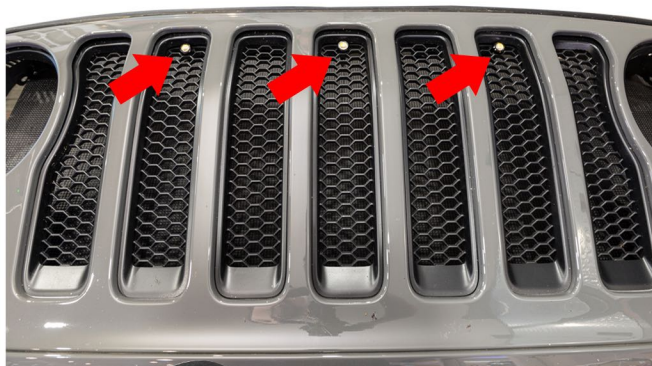
Pull the fender liner back slightly to access the park light harness. Remove the 3 outer fasteners.



Next, we'll unbolt these (2) 8mm bolts and (1) 10mm bolt.



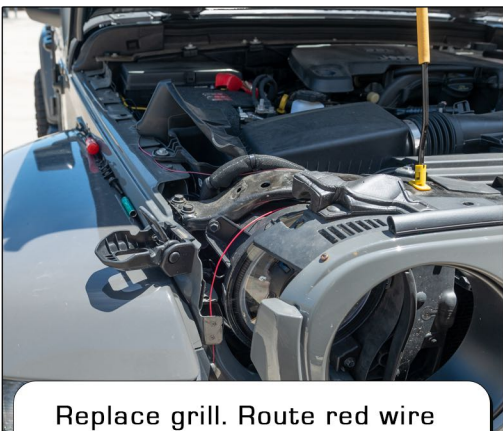
Thread the locking nuts onto each bolt light.



Make sure to add the supplied spacers to the bolt lights. (2) per light.



Group your cables together at the center. Crimp the red wires together and the black wires together.



Replace grill. Route red wire through the core support and around the passenger HL.



Route the black wire along the passenger fender to the ground post. Ground post is a 10mm bolt.



Locate the parking light bulb plug. T-Tap the red wire to the white with brown striped wire for power. Turn on park mode to test.