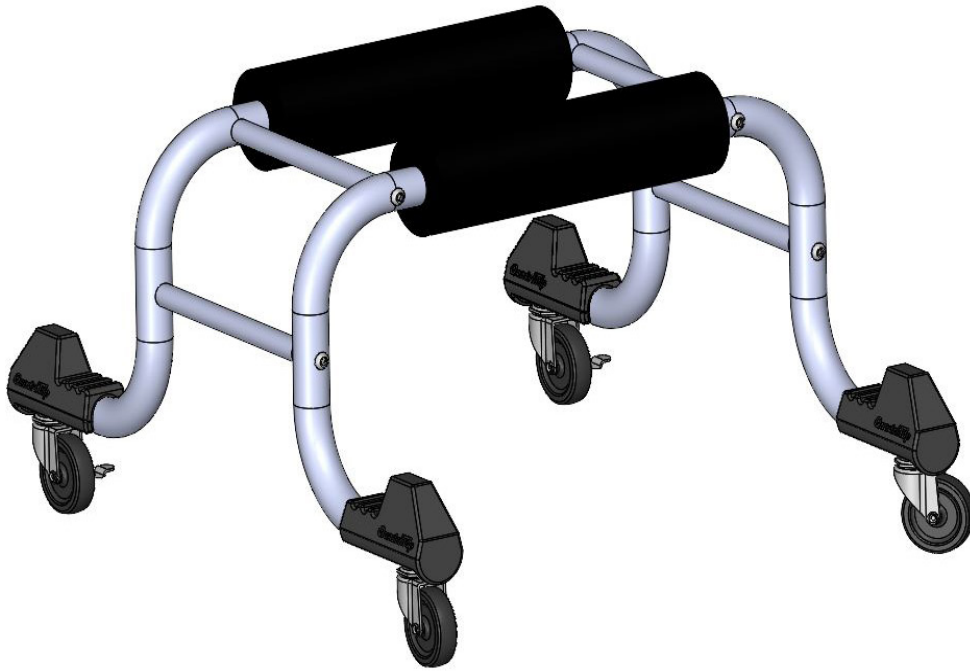


QuadraTop® Door & Freedom Panel Storage Cart

Installation Manual: For CJ, Wrangler & Gladiator #12020-3700

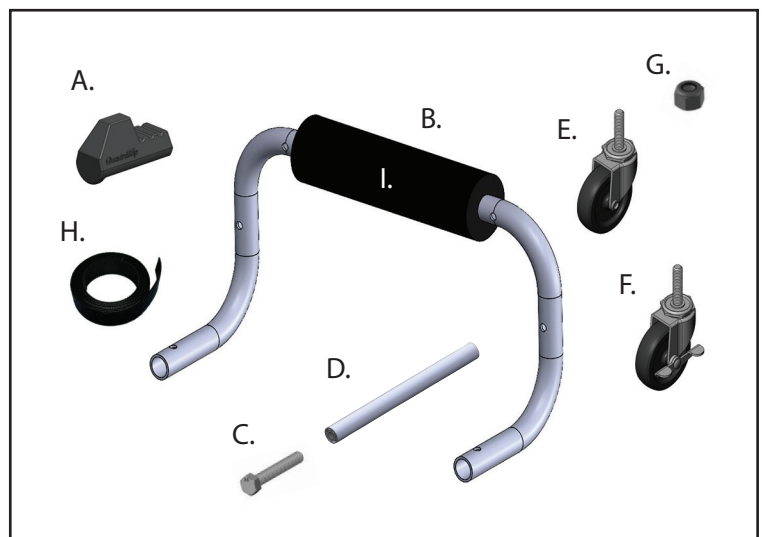


NOTICE

THIS DOOR/FREEDOM PANEL CART IS DESIGNED ONLY TO HOLD ONE PAIR OF DOORS OR FREEDOM PANELS, TWO CARTS WOULD BE NEEDED TO ACCOMMODATE A 4 DOOR VEHICLE.

PARTS LIST:

- A. Rubber Foot (x4)
- B. Cart Frame Section with Pad (x2)
- C. M8-1.25 x 50mm Bolt (x8)
- D. Spacer Tube M8-1.25 Threads(x4)
- E. Caster Wheel Non-Locking (x2)
- F. Caster Wheel Locking (x2)
- G. Nylock Nut M10-1.50 (x4)
- H. Hook & Loop Cinch Strap 48"L (x1)
- I. Center Foam Pad (x2) Preinstalled



REQUIRED TOOLS LIST:

- Safety Glasses
- 14mm Wrench
- 17mm Wrench

Check out these additional Perfect Quadratop Product Pairings at Quadratec.com:

- 12020-2000 Quadratop Hardtop Hosit System
- 12020-3600 Quadratop Premium Hardtop Cart for 20'-Present Gladiator JT
- 12020-3601 Quadratop Premium Hardtop Cart for 07'-Present Wranglers
- 12020-3602 Quadratop Premium Hardtop Cart for 76'-06' CJs & Wranglers
- 12020-5100 Quadratop Wall Mount Door Hanger Bracket (Single Pair of Doors)
- 12020-5101 Quadratop Wall Mount Door Hanger Bracket (Two Pair of Doors)

QuadraTop®





BEFORE YOU BEGIN INSTALLATION:

Congratulations on your purchase of QuadraTop® Door and Freedom Panel Cart for your Jeep® CJ, Wrangler or Gladiator. This custom Cart has been designed for protection, long life, and great looks. When unpacking, check to make sure all parts are included and not damaged due to shipping. If any part is missing or broken, please call Customer Service at: 800-745-6037 as soon as possible. Thank you again for your purchase, now let's start the assembly process.

A FEW WORDS ABOUT PRODUCT SAFETY:

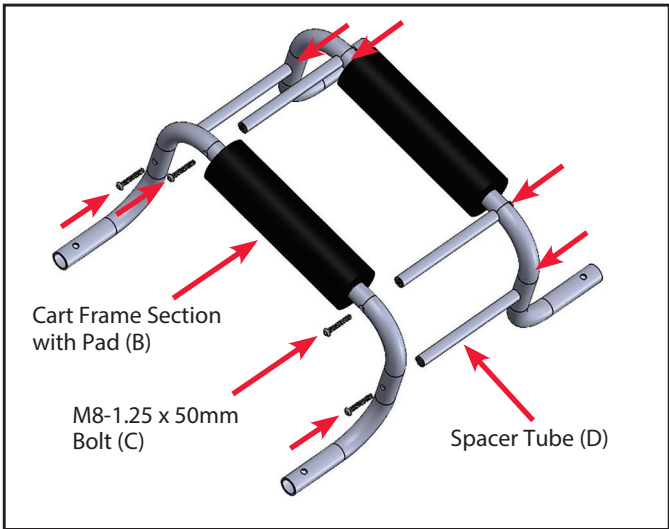
Your QuadraTop Door and Freedom Panel Storage Cart is intended to enhance the versatility and enjoyment of your vehicle and to help preserve your investment. Before assembly and use, please review the following safety and assembly information. Throughout these instructions important safety information is generally preceded by one of the three signal words indicating the relative risk of injury, property damage or adverse consequence.

The signal words mean:

 WARNING 	A HAZARDOUS SITUATION WHICH, IF NOT AVOIDED, COULD RESULT IN DEATH OR SERIOUS INJURY. YOU CAN BE KILLED OR SERIOUSLY HURT IF YOU DON'T FOLLOW INSTRUCTIONS.
 CAUTION 	A HAZARDOUS SITUATION WHICH, IF NOT AVOIDED, COULD RESULT IN A MINOR OR MODERATE INJURY. YOU CAN BE MODERATELY HURT AND ALSO MAY SUFFER PROPERTY DAMAGE IF YOU DON'T FOLLOW INSTRUCTIONS.
NOTICE	CAREFUL ATTENTION IS REQUIRED TO THIS INSTRUCTION OR OPERATION BUT DOES GENERALLY NOT RELATE TO PERSONAL INJURY. DAMAGE TO YOUR QUADRATOP® PRODUCT OR OTHER PROPERTY MAY RESULT IF YOU DON'T FOLLOW INSTRUCTIONS.

SECTION 1: CART ASSEMBLY

STEP 1: ASSEMBLING THE CART FRAME

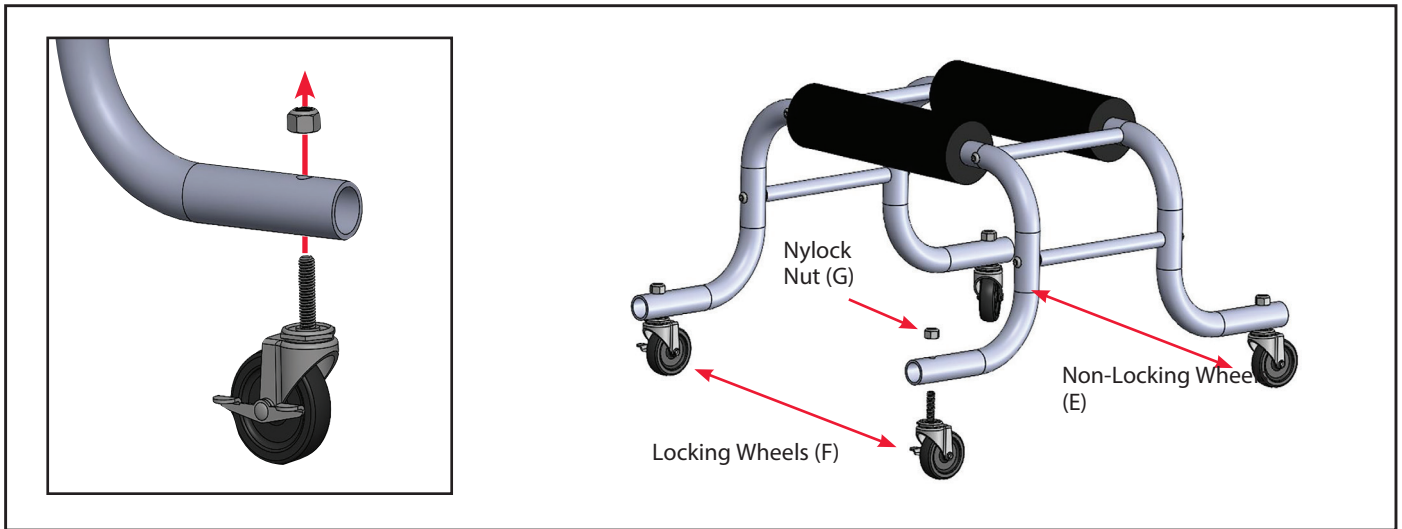


Install the four Spacer Tubes (D) between the two Cart Frame Sections (B). Fasten the Cart Frame Sections together using eight M8-1.25 x 50mm Bolts (C). Tighten each bolt with a 14mm wrench.

NOTICE	DO NOT OVERTIGHTEN THE EIGHT M8-1.25MM BOLTS OR THE CART FRAME TUBING WILL BEGIN TO DEFORM.
---------------	---------------------------------------------------------------------------------------------

SECTION 1: CART ASSEMBLY (CON'T)

STEP 2: INSTALLING THE CASTER WHEELS

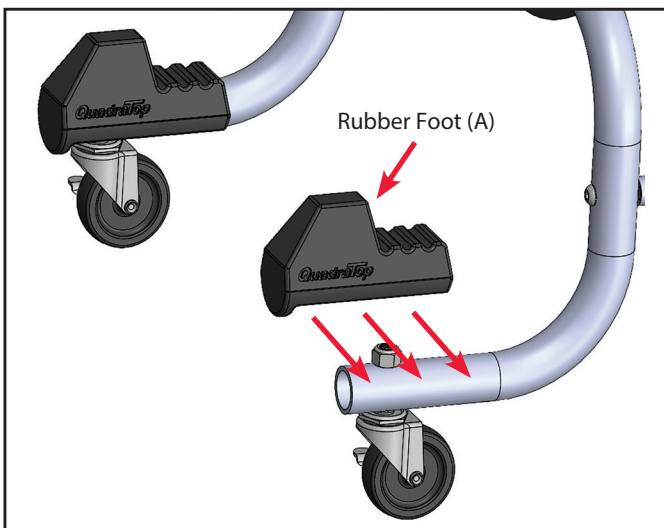


Fasten both Non-Locking Wheels (E) on same side and both Locking Wheels (F) on the opposite side. Secure each Caster Wheel to the Cart Frame assembly using an M10-1.50 Nylock Nut (G). Tighten all four Nylock Nuts with a 17mm wrench.

NOTICE

DO NOT OVERTIGHTEN THE CASTOR WHEEL NUTS OR THE CART FRAME TUBING WILL BEGIN TO DEFORM.

STEP 3: INSTALLING THE RUBBER FEET



Install a Rubber Foot (A) over each Cart Frame end. These are a slip-on fit. Be sure that each foot is completely snug and secure over the tubing. Cart assembly is now complete and ready for use.

SECTION 1 COMPLETE - CART ASSEMBLY

YOU CAN NOW MOVE ON TO SECTION 2.

SECTION 2: DOOR STORAGE



NOTE: ALL doors should be removed and reinstalled at a 90° angle to the body as shown. Otherwise, damage to doors may occur. Roll windows down first. Remember to disconnect the door check straps and wire connectors prior to removing doors. Reconnect door check straps and wiring IMMEDIATELY upon door reinstallation.

NOTICE

DOORS SHOULD BE REMOVED AND REINSTALLED AT A 90° ANGLE TO THE BODY OR DAMAGE MAY OCCUR TO THE DOOR AND VEHICLE.

NOTICE

DOORS MUST BE SECURED WITH THE INCLUDED HOOK AND LOOP CINCH STRAP TO PREVENT THE DOORS FROM TIPPING OFF THE CART.

CAUTION

DOORS ARE HEAVY. PLEASE USE CAUTION DURING REMOVAL AND REINSTALLATION. THE HELP OF A SECOND PERSON IS RECOMMENDED.

WARNING

TIP OVER HAZARD. KEEP STORED DOORS INSIDE AND AWAY FROM WIND. KEEP CHILDREN AWAY FROM STORED DOORS AT ALL TIMES.

FRONT DOOR STORAGE



Before loading the cart, ensure that both locking caster wheels are in the LOCKED position (FIG 13). Before removing the doors from the vehicle, roll the door windows DOWN and fold the side view mirrors inward. Follow vehicle manufacturer's door removal instructions if available. Doors should be removed at a 90° angle to the body. Place doors onto the cart with the exterior sides against the center foam pads (I) (Fig 1 & 2) and bottom door edge into the rubber foot grooves (Fig 3). An assistant is recommended to steady each door as it is placed onto the cart. Once both doors are properly positioned onto the cart, wrap the Hook & Loop Cinch Strap (H) around the window frames (Fig 2 & 4). This will prevent the doors from being tipped off the cart.

SECTION 2: DOOR STORAGE (CONT')

REAR DOOR STORAGE

FIG 5



FIG 6



FIG 7



Before loading the cart, ensure that both locking caster wheels are in the LOCKED position (FIG 13). Roll the door windows DOWN before removing doors. Follow vehicle manufacturer's door removal instructions if available. Doors should be removed at a 90° angle to the body. Place doors onto the cart with the exterior sides against the center foam pads (I) (Fig 5 & 6) and bottom and angled door edges into the rubber foot grooves (Fig 7). An assistant is recommended to steady each door as they it is placed onto the cart. Once both doors are properly positioned onto the cart, wrap the Hook & Loop Cinch Strap (H) around the window frames (Fig 4 & 6). This will prevent the doors from being tipped off the cart.

SECTION 3: FREEDOM PANEL STORAGE



NOTICE

FREEDOM PANELS MUST BE SECURED WITH THE INCLUDED HOOK AND LOOP CINCH STRAP TO PREVENT THE PANELS FROM TIPPING OFF THE CART.

⚠ WARNING ⚠

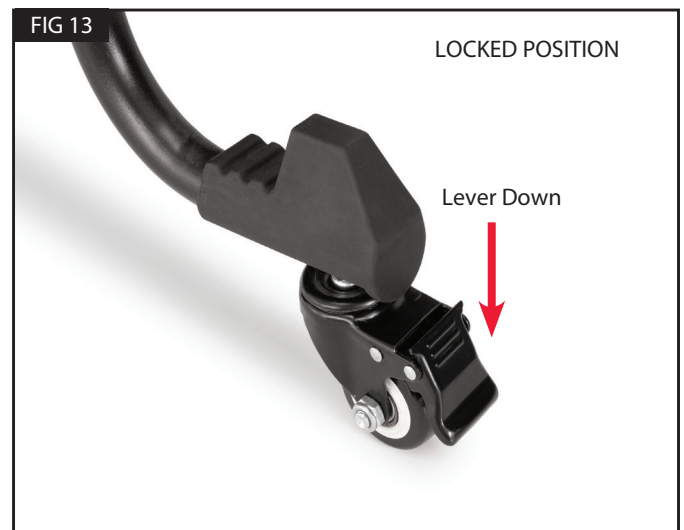
TIP OVER HAZARD. KEEP STORED FREEDOM PANELS INSIDE AND AWAY FROM WIND. KEEP CHILDREN AWAY FROM STORED PANELS AT ALL TIMES.

SECTION 3: FREEDOM PANEL STORAGE (CON'T)



Before loading the cart, ensure that both locking caster wheels are in the LOCKED position (FIG 13). Follow vehicle manufacturer's freedom panel removal instructions. Place panels onto the cart with the exterior sides against the center foam pads (I) with the panel edges in the rubber foot grooves (Fig 8, 9 & 10). Use the Hook & Loop Cinch Strap (H) to secure the freedom panels to each other by looping the Cinch Strap around the freedom panel latches (Fig 11). This will help to prevent panels from tipping off the cart.

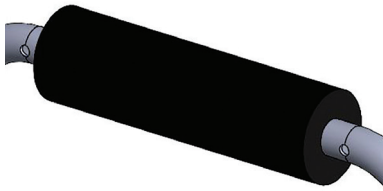
SECTION 4: MOVING AND PARKING THE CART



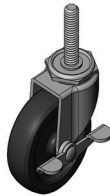
Before moving a loaded cart, ensure that doors or freedom panels are secured with the Hook & Loop Cinch Strap (Fig 4 & 11). Next, place both locking caster wheels in the UNLOCKED position (FIG 12). Cart may safely roll along hard and level flooring such as concrete, blacktop or hardwood. DO NOT attempt to roll cart on gravel, soil, grass or carpeting. Once the cart is in the desired storage spot, place both caster wheels in the LOCKED position (FIG13).

SERVICE PARTS

Available Service replacement parts for you QuadraTop Door and Freedom Panel Storage Cart #12020-3700.



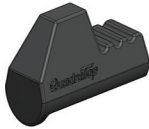
#12020-9107 Center Foam Pad - (Qty. 1)



#12020-9101 Caster Wheel - Locking (Qty. 1)



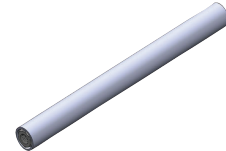
#12020-9102 Locknut - Caster Wheel - M10 (Qty. 4)



#12020-9104 Rubber End Cap - (Qty. 1)



#12020-9100 Caster Wheel - Non-Locking (Qty. 1)



#12020-9106 Tie Bar - M8-1.25 Threaded Ends (Qty. 1)



#12020-9108 Hook & Loop Cinch Strap - 48" long (Qty. 1)



#12020-9105 Bolt - Tie Bar - M8 (Qty. 8)

QuadraTop® Exclusive Three Year Limited Warranty

Your QuadraTop® branded accessories are covered by the following Limited Warranty provided exclusively by QuadraTop, Inc., 1028 Saunders Lane, West Chester PA 19380.

This Limited Warranty is the only warranty made in connection with your purchase. QuadraTop neither assumes nor authorizes any vendor, retailer or other person or entity to assume for it any other obligation or liability in connection with this product or Limited Warranty. This Limited Warranty does not apply and is not cumulative to any accessory or part distributed by QuadraTop for which the Manufacturer provides a separate written warranty.

What is Covered:

Subject to the terms, exclusions and limitations herein and with respect only to QuadraTop branded accessories first sold in the United States, QuadraTop warrants to the initial retail purchaser only that your QuadraTop accessory shall be free of defects in material and workmanship: for a period of three (3) years from date of retail purchase.

This Limited Warranty is not assignable and shall terminate upon sale of the vehicle upon which the QuadraTop accessory is installed or other transfer to third persons.

All other warranties are hereby disclaimed, except to the extent prohibited by applicable law in which case any implied warranty of merchantability or fitness for a particular purpose on this product is limited to three (3) years from date of initial retail sale. QuadraTop reserves the rights to: (a.) require invoice or other proof your accessory is within the terms of this Limited Warranty as a condition of warranty service and, (b.) make future revisions to this product and Limited Warranty without prior notice or obligation to upgrade your product.

What is Not Covered:

Your QuadraTop Limited Warranty does not cover products or parts QuadraTop determines to have been damaged by or subjected to: (a.) installation damage, alteration, modification, combination with other parts, failure to maintain or improper repair or service, (b.) normal wear & tear, cosmetic damage or damage from moisture or water immersion, (c.) Acts of God, accidents, misuse, negligence, inadequate mounting or impact with vehicle(s), obstacles or other aspects of the environment, (d.) theft, vandalism or other intentional damage.

Remedy Limited to Repair/Replacement:

The exclusive remedy provided hereunder shall, upon QuadraTop inspection and at our option, be either repair or replacement of product or parts (new or refurbished) covered under this Limited Warranty. Customers requesting warranty consideration should first contact QuadraTop to obtain a RGA number (610-701-3336). All labor, removal, shipping and installation costs are customer's responsibility.

Other Limitations - Exclusion of Damages - Your Rights Under State Law:

In consideration of the purchase price paid, neither QuadraTop nor any independent QuadraTop distributor/licensee are responsible for any time loss, rental costs, or for any incidental, consequential, punitive or other damages you may have or incur in connection with any part or product purchased. Your exclusive remedy hereunder for covered parts is repair/replacement as described above.

This Limited Warranty gives you specific rights. You may also have other rights that vary from state to state.

For example, some states do not allow limitations of how long an implied warranty lasts and /or do not allow the exclusion or limitation of incidental or consequential damages, so the limitations and exclusions herein may not apply to you.

©QuadraTop, Inc. 2024. All Rights Reserved.

A4 Version 1.5.2024

Instructions Part# 12999-3310