

Quadratec® Baja HD Fender Flares

Installation Manual: for 2018-Current Jeep Wrangler (JL) #12510.5230



Quadratec

⚠️ WARNING ⚠️

TO REDUCE RISK OF SERIOUS INJURY OR PROPERTY DAMAGE: READ ALL SAFETY MESSAGES AND UNDERSTAND ALL INSTRUCTIONS AND PROCEDURE NOTICES BEFORE ATTEMPTING TO INSTALL OR USE THIS PRODUCT.

⚠️ CAUTION ⚠️

RISK OF EYE INJURY! SAFETY GLASSES MUST BE WORN AT ALL TIMES WHILE INSTALLING OR MAINTAINING THIS PRODUCT. TORQUE AND RECHECK FASTENERS AFTER 250 MILES AND FREQUENTLY THEREAFTER. DO NOT USE IF DAMAGED.

NOTICE

FENDER FLARES ADD EXTRA PROTECTION ON THE TRAIL, BUT IT CAN NOT GUARANTEE AGAINST ALL POSSIBLE DAMAGE FROM LARGE OBJECTS YOU MAY ENCOUNTER. ALWAYS DRIVE WITH RESPECT FOR OBJECTS AND TERRAIN THAT COULD DAMAGE SENSITIVE PARTS OF THE VEHICLE.

A FEW WORDS ABOUT PRODUCT SAFETY:

Your Quadratec Baja HD Fender Flares are intended to enhance the utility and enjoyment of your off-road capable vehicle. Follow safety information and installation recommendations. Throughout these instructions are important safety information that is generally preceded by one of three signal words indicating the relative risk of injury, property damage or adverse consequence.

The signal words mean:

⚠️ WARNING ⚠️

A HAZARDOUS SITUATION WHICH, IF NOT AVOIDED, COULD RESULT IN DEATH OR SERIOUS INJURY. YOU CAN BE KILLED OR SERIOUSLY HURT IF YOU DON'T FOLLOW INSTRUCTIONS.

⚠️ CAUTION ⚠️

A HAZARDOUS SITUATION WHICH, IF NOT AVOIDED, COULD RESULT IN A MINOR OR MODERATE INJURY. YOU CAN BE MODERATELY HURT AND ALSO MAY SUFFER PROPERTY DAMAGE IF YOU DON'T FOLLOW INSTRUCTIONS.

NOTICE

CAREFUL ATTENTION IS REQUIRED TO THIS INSTRUCTION OR OPERATION BUT DOES GENERALLY NOT RELATE TO PERSONAL INJURY. DAMAGE TO YOUR QUADRATEC® PRODUCT OR OTHER PROPERTY MAY RESULT IF YOU DON'T FOLLOW INSTRUCTIONS.

BEFORE YOU BEGIN INSTALLATION:

Congratulations on your purchase of Quadratec® Fender Flares for your Jeep® Wrangler JL. These custom fit fender flares have been designed for protection, long life, and great looks. When unpacking, check to make sure all parts are included and not damaged due to shipping. If any part is missing or broken, please call Customer Service at 800-745-6037 as soon as possible. Thank you again for your purchase and let's start the installation process.

⚠️ CAUTION ⚠️

READ ALL SAFETY MESSAGES AND ALWAYS WEAR SAFETY GLASSES WHEN WORKING WITH TOOLS.

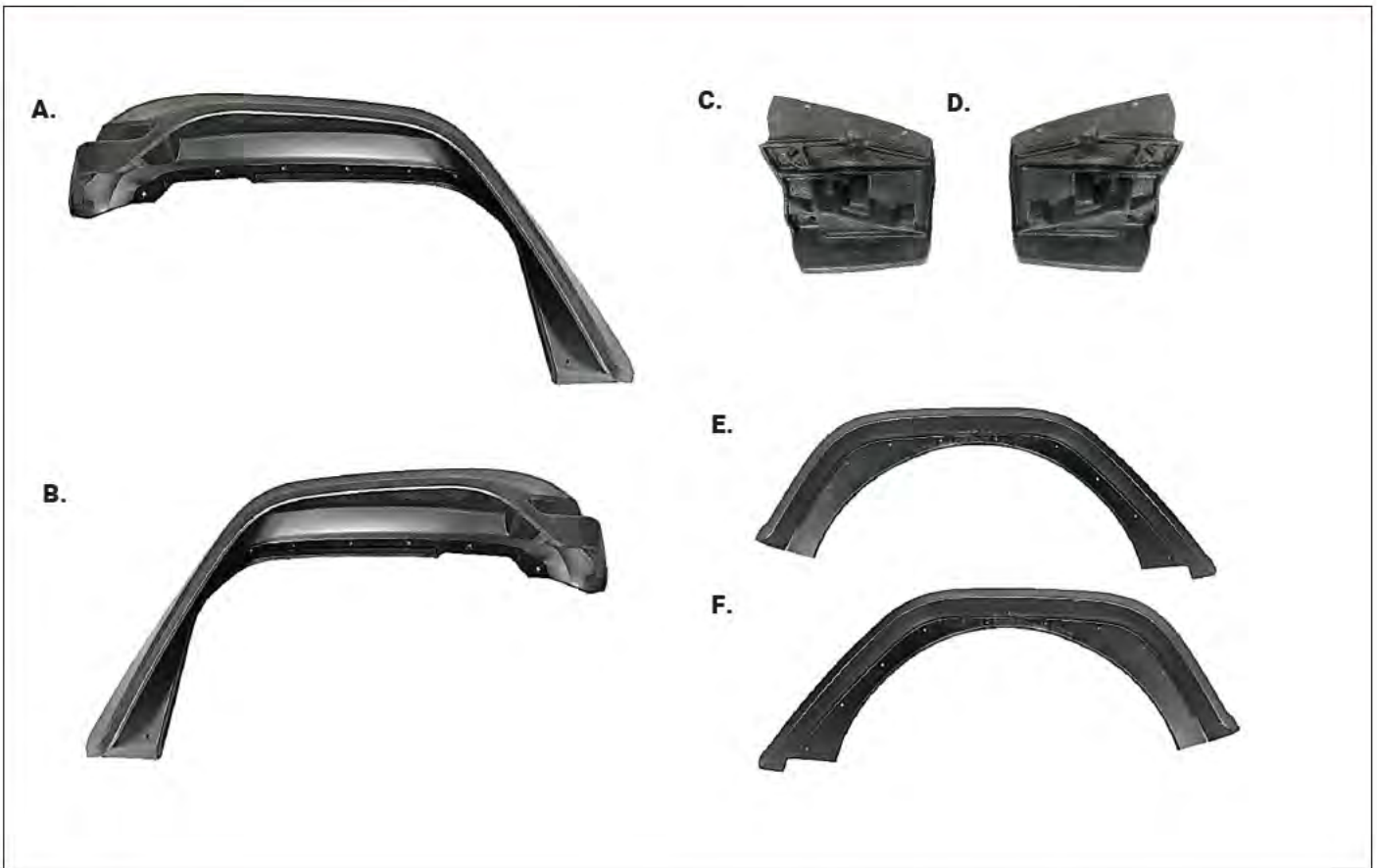
NOTICE

THIS PRODUCT IS INSTALLED ON THE SIDE THE VEHICLE AND REQUIRES ACCESS TO THE WHEEL WELLS. WE RECOMMEND USING A VEHICLE LIFT SUCH AS THOSE FOUND IN MOST REPAIR SHOPS TO ACCESS THIS PART OF THE VEHICLE. ALWAYS USE CAUTION WHEN WORKING AROUND YOUR VEHICLE.

WE ALSO RECOMMEND THAT YOU HAVE A HELPER NEARBY AS SOME OF THE STEPS OUTLINED BELOW WILL BE MUCH EASIER WITH THE HELP OF ANOTHER SET OF HANDS.

NOTICE

IF THERE IS ANY INTERFERENCE, ADJUST THE FENDER FLARES ACCORDINGLY TO MAKE SURE ALL COMPONENTS ARE NOT TOUCHING. FAILURE TO DO THIS STEP MAY CAUSE DAMAGE TO THE VEHICLE.



REQUIRED TOOLS:

- Safety Glasses
- Gloves
- 10mm Socket
- T-30 TORX Driver
- Ratchet
- Phillips Screwdriver
- Plastic Pry Tool
- Awl
- Cut-off Wheel or Dremel or Snips
- Sanding Disc or Sandpaper



KIT CONTENT LIST:

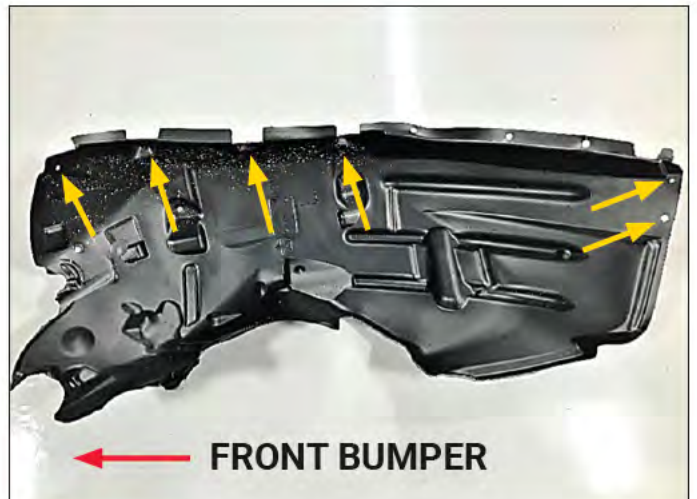
- A. Front Flare - L (1)
- B. Front Flare - R (1)
- C. Front Bracket - L (1)
- D. Front Bracket - R (1)
- E. Rear Flare - L (1)
- F. Rear Flare - R (1)
- G. "U" Clip (6)
- H. Truss Screw (6)
- I. Plastic Retainer (44)

STEP 1 - FACTORY FRONT FLARE REMOVAL



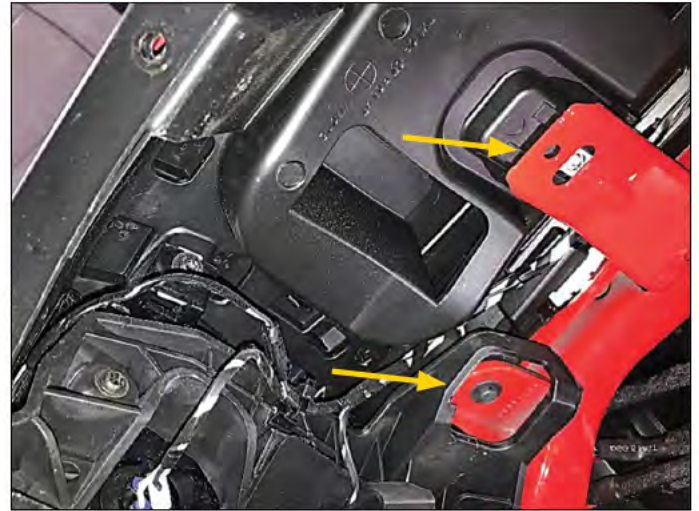
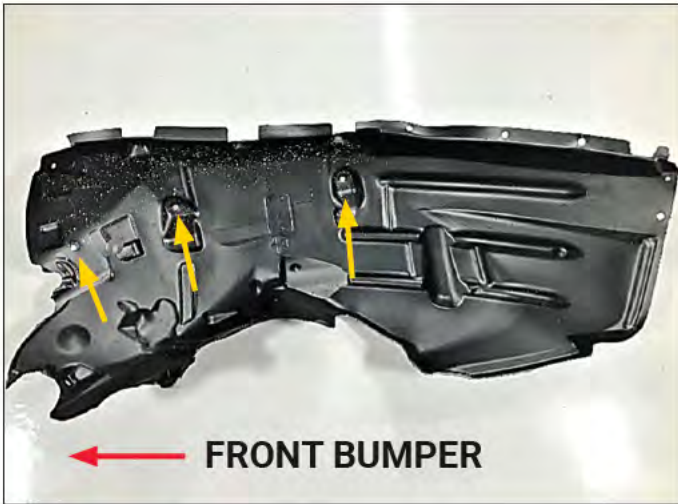
Put on safety glasses and gloves. On front factory flare, use an awl to pop the eight factory retainers in center of each retainer to disengage. Arrows point to the location of factory retainers.

STEP 2 - FACTORY FRONT FLARE AND WHEEL WELL REMOVAL



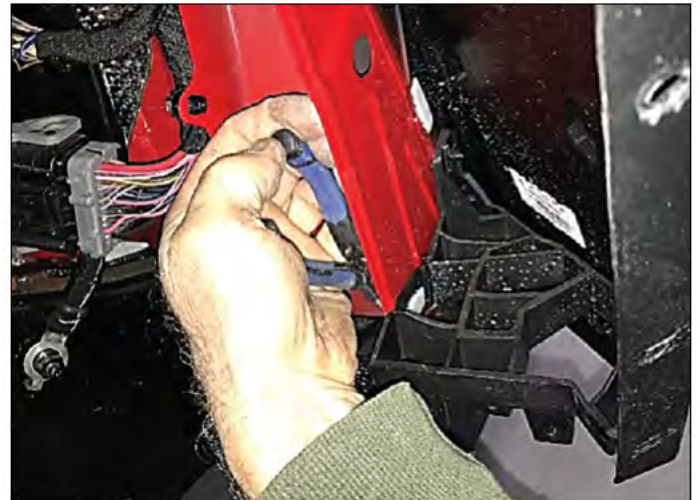
Using a plastic pry tool, remove each retainer popped in Step 1 and discard. To remove wheel well liner, first use a pry tool to remove 6 factory retainers from liner as shown by the arrows and discard. (Liner is shown removed from wheel well to make it easier to view.)

STEP 3 - FACTORY FRONT FLARE REMOVAL



Using a 10mm socket, remove the three factory bolts from locations marked by arrows. Remove and discard wheel well liner. Remove two bolts from the light housing but retain those for use in Step 17.

STEP 4 - FACTORY FRONT FLARE REMOVAL



Disconnect the light wire harness (in the circle) by pushing the red tab out to unlock. Push in the release tab and pull the harness out. To remove lower bracket, use pliers behind bracket and sheet metal to disengage two white factory retainers and discard.

STEP 5 - FACTORY FRONT FLARE REMOVAL



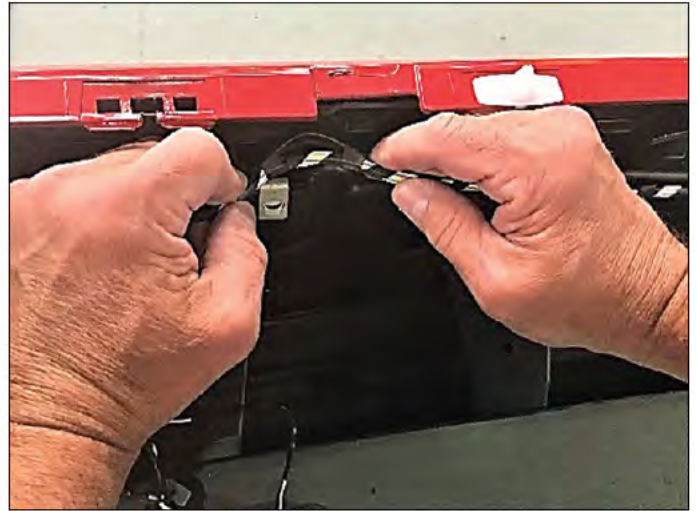
Disengage the nine white factory retainers that are holding the factory flare onto vehicle. These are spaced along the wheel well. All but one bracket is accessible by pliers. If you wish to preserve the paint finish (which will be covered by flare), use a plastic pry tool to help remove retainers. Pull factory flare from vehicle. Pry any white retainers from the sheet metal and discard. These holes must be clear for installation. Retain factory flare to remove light housing in the next steps.

STEP 6 - LIGHT HOUSING REMOVAL



Turn the removed flare on its back on a work surface. Using a Phillips screwdriver, remove the factory fastener from the light housing as shown. Using a T-30 Torx driver, remove the four factory fasteners as shown. Retain ALL factory fasteners as most will be reused in Steps 9 and 13.

STEP 7 - LIGHT HOUSING REMOVAL



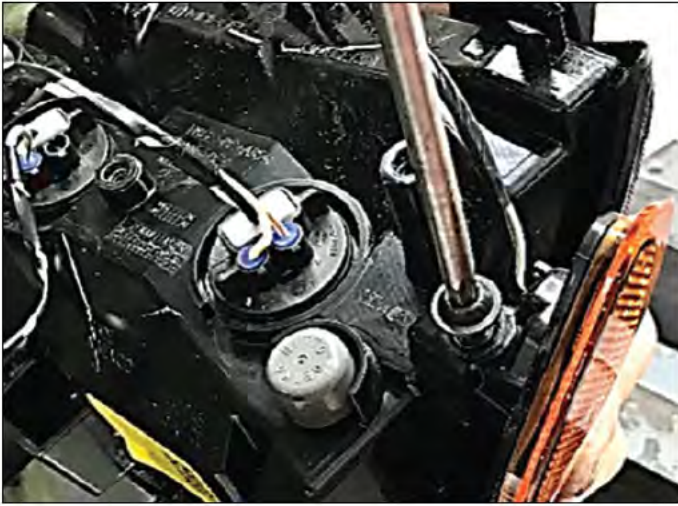
Lift the housing flap up to remove four more fasteners underneath it as shown using the T-30 Torx driver. Remove the wiring harness from light housing routing using your hands or pliers. Do not cut the electrical tape. Gently pry from contact points. Disconnect light bulb connector. Remove the light from the factory flare.

STEP 8 - LIGHT HOUSING REMOVAL



Slide the side marker light from the housing. Light is taped to the factory flare. Gently pry the housing from flare to disengage tape.

STEP 9 - LIGHT HOUSING REMOVAL



Reinstall the side marker light using the short factory specialty plastic fastener (removed at Step 6 as shown).

⚠ WARNING ⚠

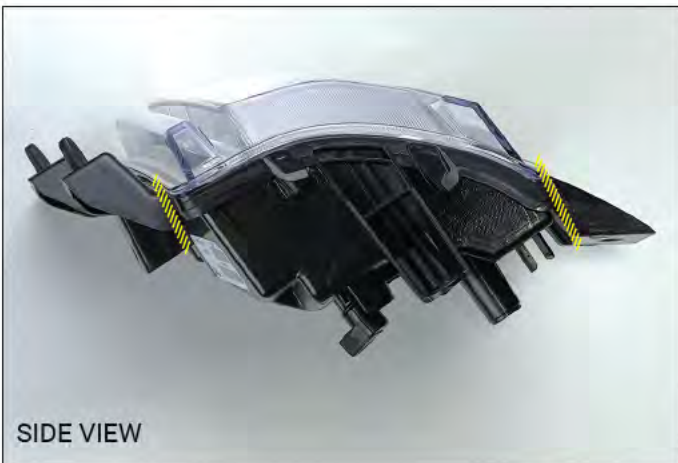
READ ALL SAFETY WARNINGS, INSTRUCTIONS, ILLUSTRATIONS AND SPECIFICATIONS PROVIDED WITH YOUR POWER TOOL. FAILURE TO FOLLOW INSTRUCTIONS PROVIDED WITH YOUR POWER TOOL MAY RESULT IN ELECTRIC SHOCK, FIRE AND/OR SERIOUS INJURY.

STEP 10 - LIGHT HOUSING MODIFICATION

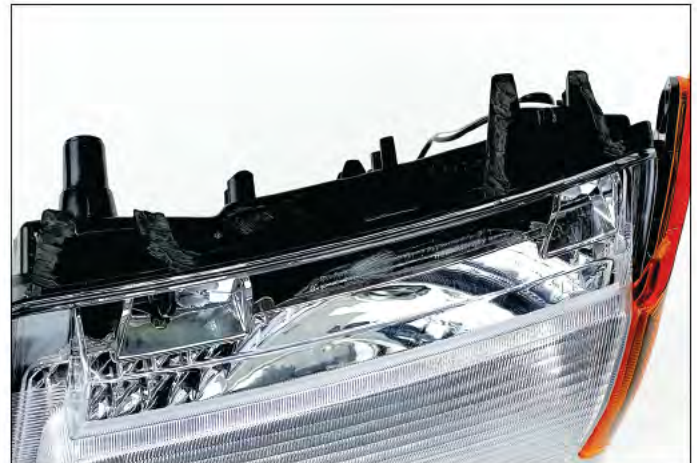


FRONT VIEW

Using a cutoff wheel or saw, cut the four plastic tabs on light housing as shown. The yellow line denotes the locations to cut. The goal is to remove these tabs parallel with contours of light housing as cleanly as possible. Take precautions to avoid cutting away too much material from light housing. Use the next pictures to help visualize where to make cuts. Do not cut into the sealed clear lens or housing.



SIDE VIEW



STEP 11 - LIGHT HOUSING MODIFICATION



Using a sanding disc or sandpaper, sand down any remaining tab vestiges. Tab vestiges must be as flush as possible for proper installation.

STEP 12 - LIGHT HOUSING REASSEMBLY



Install a supplied "U" Clip over hole in bottom bracket of modified light housing, centering the hole in clip over the hole in the bracket. Reconnect harness and/or light bulbs if you removed them. The wire harness will need to be routed in the groove in the housing and ultimately to the connector in the engine compartment when installing new flares.

STEP 13 - LIGHT HOUSING REASSEMBLY



Assemble the modified light housing with supplied front bracket. Start three factory fasteners (removed at Step 6) through supplied Front Bracket and into modified light housing, but do not tighten. Using an awl, make sure "U" clip installed previously is still centered over hole in bracket.

STEP 14 - LIGHT HOUSING REASSEMBLY



Start a supplied Truss screw into clip. Screws will not be tightened until after the light housing is installed in new flare.

STEP 15 - FRONT FLARE INSTALLATION



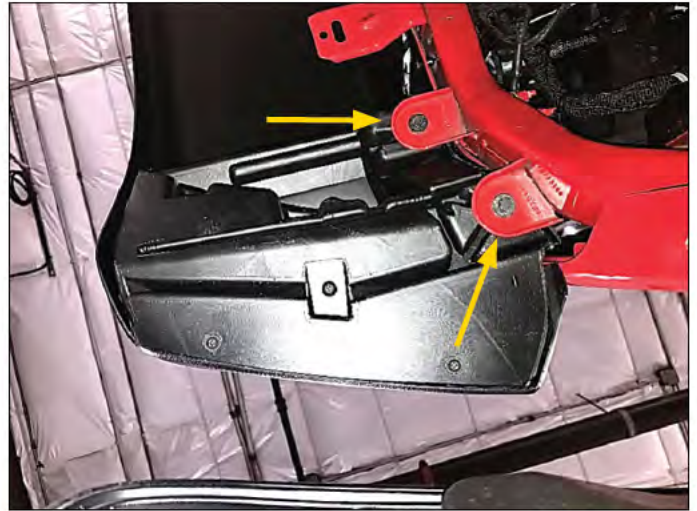
Slide the two supplied "U" clips onto the front flare inner bracket as shown. Holding the flare on the fender, install two supplied plastic retainers through the flare holes located at the arrows. Push each retainer in to engage. The remaining plastic retainers will be installed in later steps.

STEP 16 - FRONT FLARE INSTALLATION



Holding the flare on the fender, install two supplied plastic retainers through the holes at bottom rear of flare, under flare corner bracket feature, and into holes in fender. Push each retainer in to engage. Fit assembled light housing bracket into inside of flare, as shown.

STEP 17 - FRONT FLARE INSTALLATION



Using a 10mm socket, start two factory bolts (removed at Step 3) through sheet metal brackets and into t-nuts present on light housing bracket. Do not tighten.

STEP 18 - FRONT FLARE INSTALLATION



Using a Phillips screwdriver, start two supplied Truss screws through clip holes in the bracket and into the flare inner structure. Do not tighten. Check fit of light inside light pocket and adjust screws incrementally as needed to ensure even spacing between light and flare. Slowly tighten ALL screws and bolts in light housing and bracket. It is intentional that parts of the light lenses will be obscured by the flare.

STEP 19 - FRONT FLARE INSTALLATION



Route wiring harness from light housing over the first of the metal fender brackets and toward the channel molded into flare. Tuck wiring harness up into channel in flare and route into engine compartment (connector is located near washer fluid reservoir). Connect wiring harness to connector.

STEP 20 - FRONT FLARE INSTALLATION



Install the seven remaining plastic fasteners. Repeat instructions to this point for the other side of the vehicle.

STEP 21 - REAR FACTORY FLARE REMOVAL



On the rear factory flare, use an awl to pop eight factory retainers in center of each retainer to disengage. Arrows point to factory retainer locations.

STEP 22 - REAR FACTORY FLARE REMOVAL



Using a plastic pry tool, pry each plastic retainer from vehicle and discard. To remove wheel well liner, first use a pry tool to remove four factory retainers from outer edge of wheel well liner and discard. The removed liner shows the locations of the four fasteners.

STEP 23 - REAR FACTORY FLARE AND WHEEL WELL LINER REMOVAL



Using a pry tool, remove four more factory retainers from liner area behind wheel and discard retainers. Remove wheel well liner. Use pliers and pry tool to disengage the twelve white factory retainers. Unlike the front flare retainers, the rear retainers cannot be released from behind. Force is required to remove the factory flare and some retainers will break apart. Discard these factory retainers.

STEP 24 - REAR FACTORY FLARE REMOVAL



Pull factory flare from vehicle. Pry any white retainers from sheet metal and discard – holes must be clear for installation. Discard factory flare. While holding the flare on the fender, install the eleven supplied plastic retainers through holes in flare and into holes in fender. Push each retainer to engage. NOTE: One plastic fastener will be placed in the factory hole at the lower front *without* engaging the flare.



Plastic Fastener locations. NOTE: Fastener in lower front goes directly into sheet metal. Repeat instructions from Step 21 to this point for the other side of the vehicle.

Quadratec® Exclusive Three Year Limited Warranty

Your Quadratec® branded accessories are covered by the following Limited Warranty provided exclusively by Quadratec, Inc., 1028 Saunders Lane, West Chester PA 19380.

This **Limited Warranty** is the only warranty made in connection with your purchase. Quadratec neither assumes nor authorizes any vendor, retailer or other person or entity to assume for it any other obligation or liability in connection with this product or Limited Warranty. This Limited Warranty does not apply and is not cumulative to any accessory or part distributed by Quadratec for which the Manufacturer provides a separate written warranty.

What is Covered:

Subject to the terms, exclusions and limitations herein and with respect only to Quadratec branded accessories first sold in the United States, Quadratec warrants to the initial retail purchaser only that your Quadratec accessory shall be free of defects in material and workmanship: for a period of three (3) years from date of retail purchase.

This **Limited Warranty** is not assignable and shall terminate upon sale of the vehicle upon which the Quadratec accessory is installed or other transfer to third persons.

All other warranties are hereby disclaimed, except to the extent prohibited by applicable law in which case any implied warranty of merchantability or fitness for a particular purpose on this product is limited to three (3) years from date of initial retail sale. Quadratec reserves the rights to: (a.) **require invoice or other proof your accessory is within the terms of this Limited Warranty as a condition of warranty service and, (b.) make future revisions to this product and Limited Warranty without prior notice or obligation to upgrade your product.**

What is Not Covered:

Your Quadratec Limited Warranty does not cover products or parts Quadratec determines to have been damaged by or subjected to: (a.) **installation damage, alteration, modification, combination with other parts, failure to maintain or improper repair or service, (b.) normal wear & tear, cosmetic damage or damage from moisture or water immersion, (c.) Acts of God, accidents, misuse, negligence, inadequate mounting or impact with vehicle(s), obstacles or other aspects of the environment, (d.) theft, vandalism or other intentional damage.**

Remedy Limited to Repair/Replacement:

The exclusive remedy provided hereunder shall, upon Quadratec inspection and at our option, be either repair or replacement of product or parts (new or refurbished) covered under this Limited Warranty. Customers requesting warranty consideration should first contact Quadratec to obtain a RGA number (610-701-3336). All labor, removal, shipping and installation costs are customer's responsibility.

Other Limitations - Exclusion of Damages - Your Rights Under State Law:

In consideration of the purchase price paid, neither Quadratec nor any independent Quadratec distributor/licensee are responsible for any time loss, rental costs, or for any incidental, consequential, punitive or other damages you may have or incur in connection with any part or product purchased. Your exclusive remedy hereunder for covered parts is repair/replacement as described above.

This **Limited Warranty** gives you specific rights. You may also have other rights that vary from state to state. For example, some states do not allow limitations of how long an implied warranty lasts and /or do not allow the exclusion or limitation of incidental or consequential damages, so the limitations and exclusions herein may not apply to you.

©Quadratec, Inc. 2021. All Rights Reserved.
A4 Version 1/4/2022

Instructions Part #12999.3218

Quadratec