

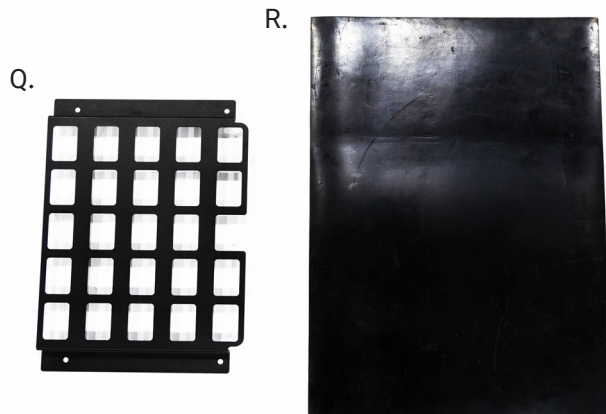
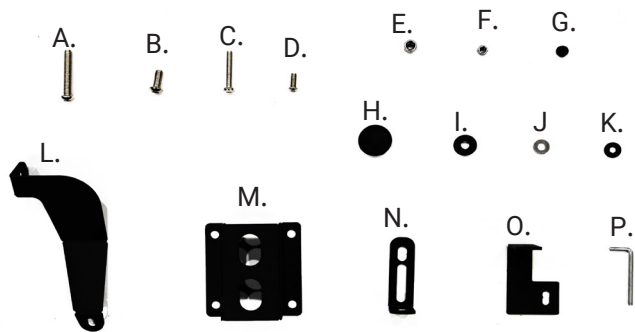
Quadratec® Trail and Tool Storage box

Installation Instructions: '07-'17 JK Wrangler #14141-2000



KIT CONTENT LIST:

- A. M10 x 50mm Hex bolt (x4)
- B. M10 x 20mm Hex bolt (x4)
- C. M8 x 40mm Hex bolt (x4)
- D. M8 nylon nut (x4)
- E. M6 nylon nut (x16)
- F. Small rubber gromet (x2)
- G. Large rubber gromet (x2)
- I. Floor mounting spacer (x16)
- J. Flat washer (x30)
- K. Black washer (x4)
- L. Box front floor bracket (x2)
- M. Tie down strap bracket (x2)
- N. "L" Shaped mount bracket (x4)
- O. Box rear floor bracket (x2)
- P. Allen key
- Q. Molle Panel
- R. Rubber mat



REQUIRED TOOLS:

- Safety glasses
- T-30 security torx bit
- T-40 security torx bit
- Allen key (supplied) or 4mm hex drive
- 10mm Wrench
- 13mm Wrench

Quadratec®

! WARNING !

TO REDUCE RISK OF SERIOUS INJURY OR PROPERTY DAMAGE:
READ ALL SAFETY MESSAGES AND UNDERSTAND ALL INSTRUCTIONS AND PROCEDURE
NOTICES BEFORE ATTEMPTING TO INSTALL OR USE THIS PRODUCT.

! CAUTION !

RISK OF EYE INJURY! SAFETY GLASSES MUST BE WORN AT ALL TIMES WHILE INSTALLING
OR MAINTAINING THIS PRODUCT. TORQUE AND RECHECK FASTENERS AFTER 250 MILES
AND FREQUENTLY THEREAFTER. DO NOT USE IF DAMAGED.

A FEW WORDS ABOUT PRODUCT SAFETY: Your Quadratec Trail and Tool Storage box is intended to provide a safe and secure storage location for you belongings while you are away from you vehicle and vehicle is unattended during your off-road excursions. Before installation, please review the following safety information and installation recommendations. Throughout these instructions important safety information is preceded by one of the three signal words indicating the relative risk of injury, property damage or adverse consequence.

The signal words mean:

! WARNING !

A HAZARDOUS SITUATION WHICH, IF NOT AVOIDED, COULD RESULT IN DEATH OR SERIOUS
INJURY. YOU CAN BE KILLED OR SERIOUSLY HURT IF YOU DON'T FOLLOW INSTRUCTIONS.

! CAUTION !

A HAZARDOUS SITUATION WHICH, IF NOT AVOIDED, COULD RESULT IN A MINOR OR
MODERATE INJURY. YOU CAN BE MODERATELY HURT AND ALSO MAY SUFFER PROPERTY
DAMAGE IF YOU DON'T FOLLOW INSTRUCTIONS.

NOTICE

CAREFUL ATTENTION IS REQUIRED TO THIS INSTRUCTION OR OPERATION BUT DOES
GENERALLY NOT RELATE TO PERSONAL INJURY. DAMAGE TO YOUR QUADRATEC®
PRODUCT OR OTHER PROPERTY MAY RESULT IF YOU DON'T FOLLOW INSTRUCTIONS.

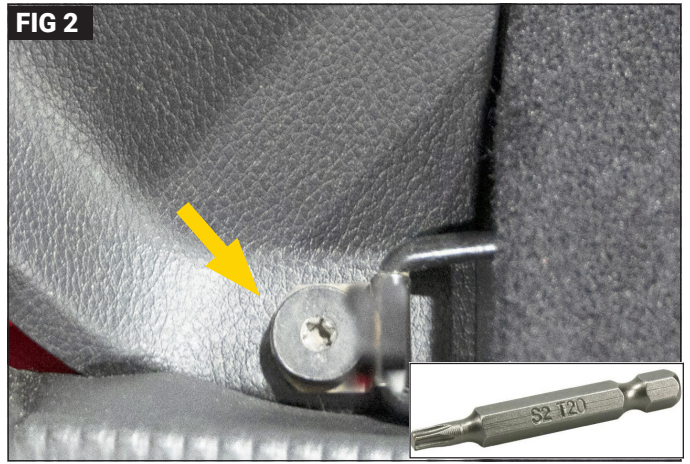
BEFORE YOU BEGIN INSTALLATION:

Congratulations on your purchase of your new Quadratec Trail and Tool Storage box. When unpacking, check to make sure all parts are included and not damaged due to shipping. If any part is missing, or broken, please call Customer Service at 800-745-6037 as soon as possible. Thank you again for your purchase and let us start the installation process.

! CAUTION !

READ ALL SAFETY MESSAGES AND ALWAYS WEAR SAFETY GLASSES WHEN WORKING
WITH TOOLS.

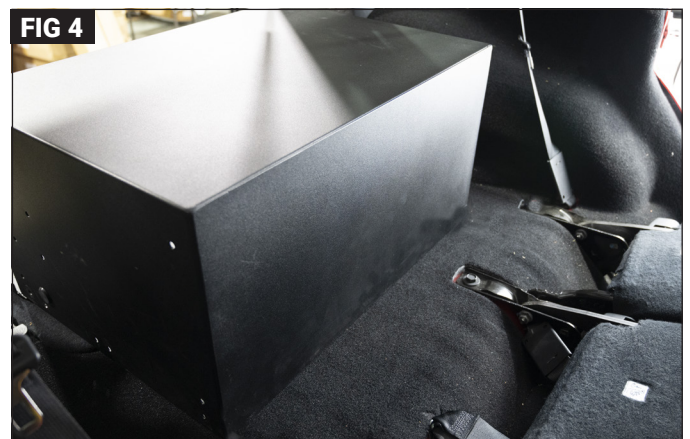
STEP 1



Put on safety glasses. The Quadratec Trail and Tool Storage box has the ability to be mounted in two locations in the rear of the cargo area, a forward or rear location. After choosing a mounting location, remove bolts and anchors at each of the four (4) chosen mounting locations with a T-30 torx bit. (FIG 2)

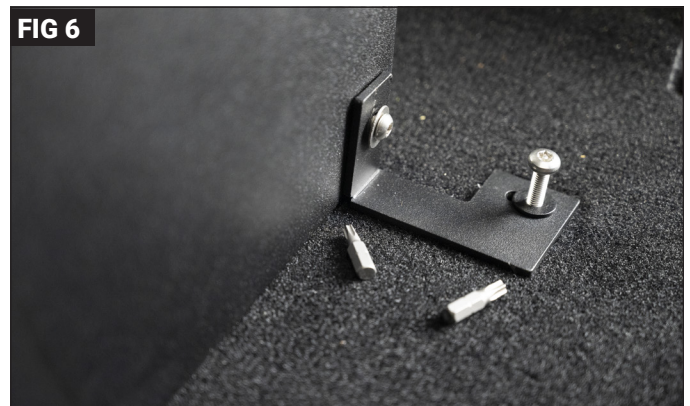
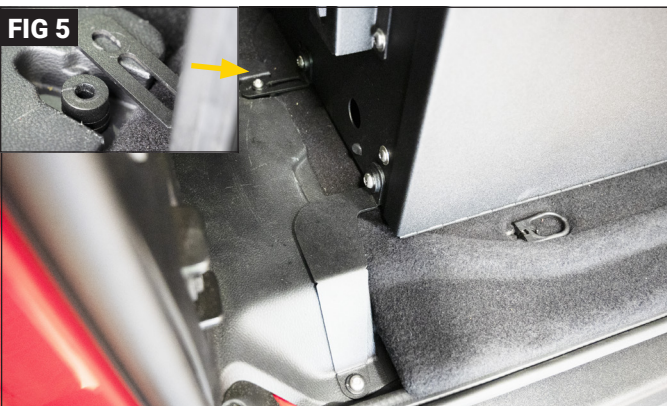
Note: Save this hardware. If you ever need to remove the Quadratec Trail and Tool Storage box for any reason, you will need to reinstall these tie down points.

STEP 2



Set Quadratec Trail and Tool Storage box into cargo area at the desired location. (FIG 3) Align storage box with the respective cargo floor mounting points and the corresponding mounting holes on the side of the Quadratec Trail and Tool Storage box. (Fig 4) is a depiction of the forward most mounting. Align and secure using appropriate brackets, spacers, tools, and hardware.

STEP 3



To mount box in the rear most position (by tailgate), you will need to use the brackets lettered "L and N" of the kit content list on either side of the box. You will also be using four (4) spacers lettered "I" with kit content list letter "N" on either side of the box. (FIG 5) To mount box in the forward most position (behind seat), you will need to use brackets lettered "N and O" of the kit content list on either side of the box. (FIG 6) You will also be using four (4) spacers lettered "I" with kit content list letter "N" on either side of the box.

STEP 4

FIG 7

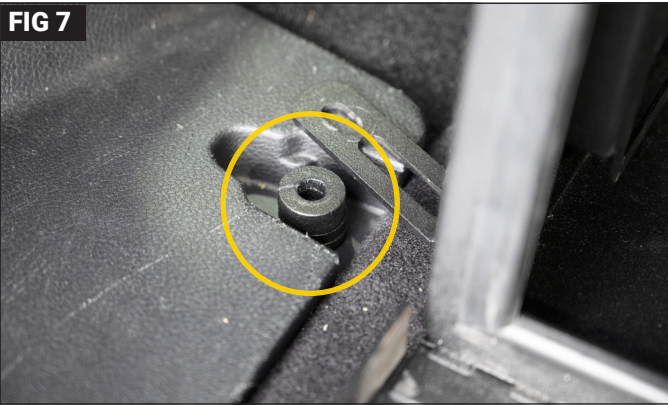


FIG 8

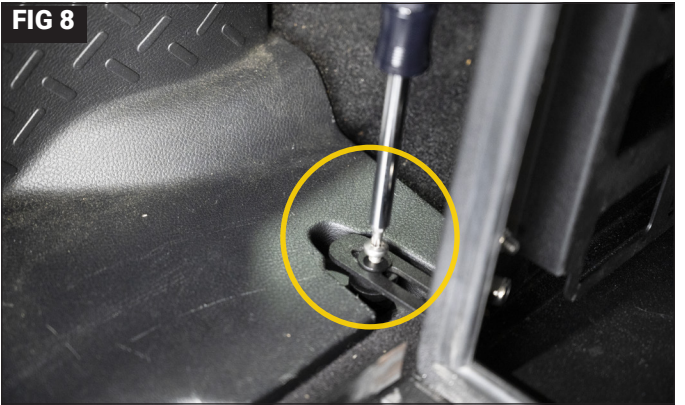


FIG 9

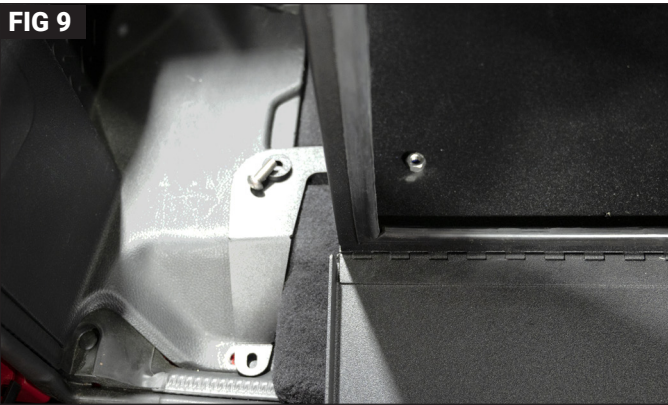
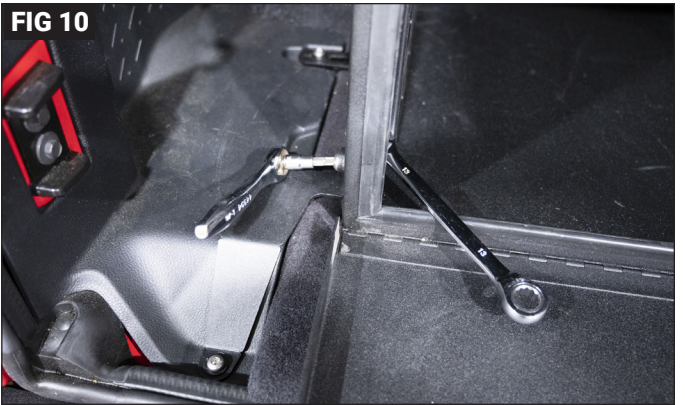


FIG 10



Four (4) M8 x 40mm hex bolts with black flat washers and spacers will be used to secure brackets to the floor. A T-30 security torx bit is the appropriate tool (FIG 7 and 8) Four (4) M10 x 20mm hex bolts with or without spacer and M8 nylon nuts will be used to secure brackets to the Quadratec Trail and Tool Storage box. A T-30 security torx bit and a 13mm wrench is the appropriate tool. (FIG 10)

Note: If mounting in the forward most position using bracket letter "O", the bracket mounting hardware to the box is the M6x15mm torx head bolt. The allen key or 4mm hex drive and a 10mm wrench are the appropriate tools.

STEP 5

FIG 11



FIG 12



Align each corner of the Tie down strap bracket to the appropriate holes of the box. (FIG 11) Using four (4) M6 x 15mm Hex bolts with flat washers and M6 nylon nuts, secure Tie down strap bracket to the box. Repeat process on the other side of box. An allen key or 4mm hex drive and a 10mm wrench are the appropriate tools. (FIG 12)

FIG 13



Note: The Tie down strap bracket secured to both sides of the outer box, will allow you to secure items on top of the Quadratec Trail and Tool Storage box. (FIG 13)

STEP 6

FIG 14

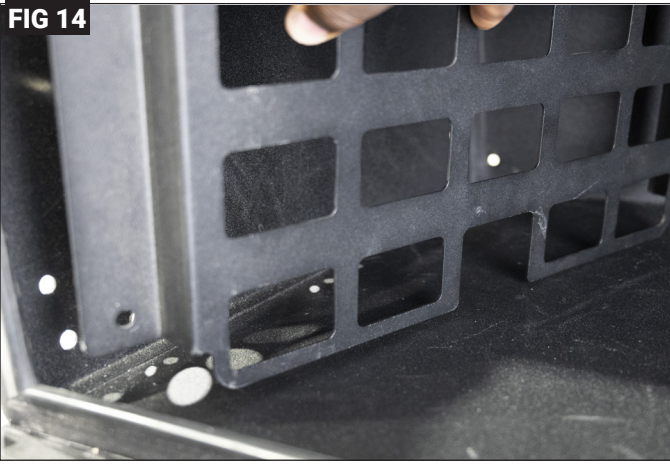
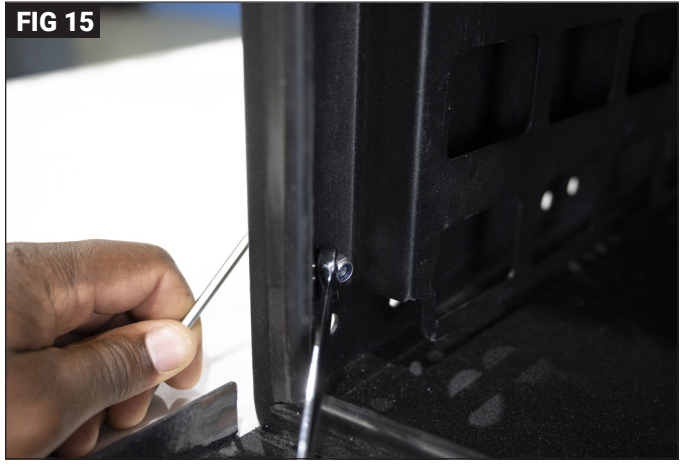
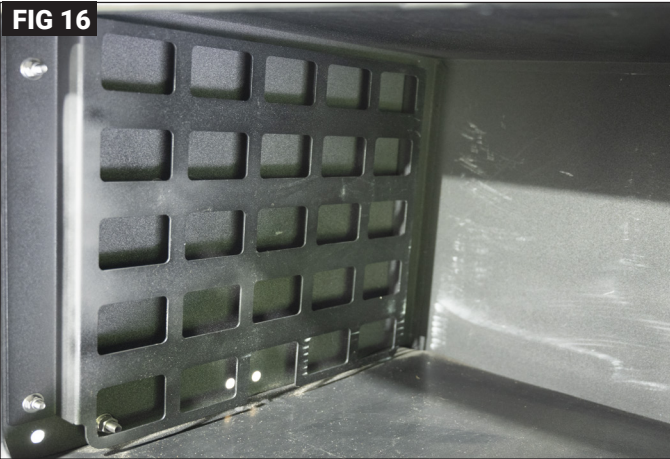


FIG 15



Align each corner of the Molle Panel to the appropriate holes of the box. (F14) Using four (4) M6 x 15mm hex bolts with flat washers and M6 nylon nuts to the box. Repeat the process on the other side. An allen key or 4mm hex drive and a 10mm wrench is the appropriate tool. (FIG 15)

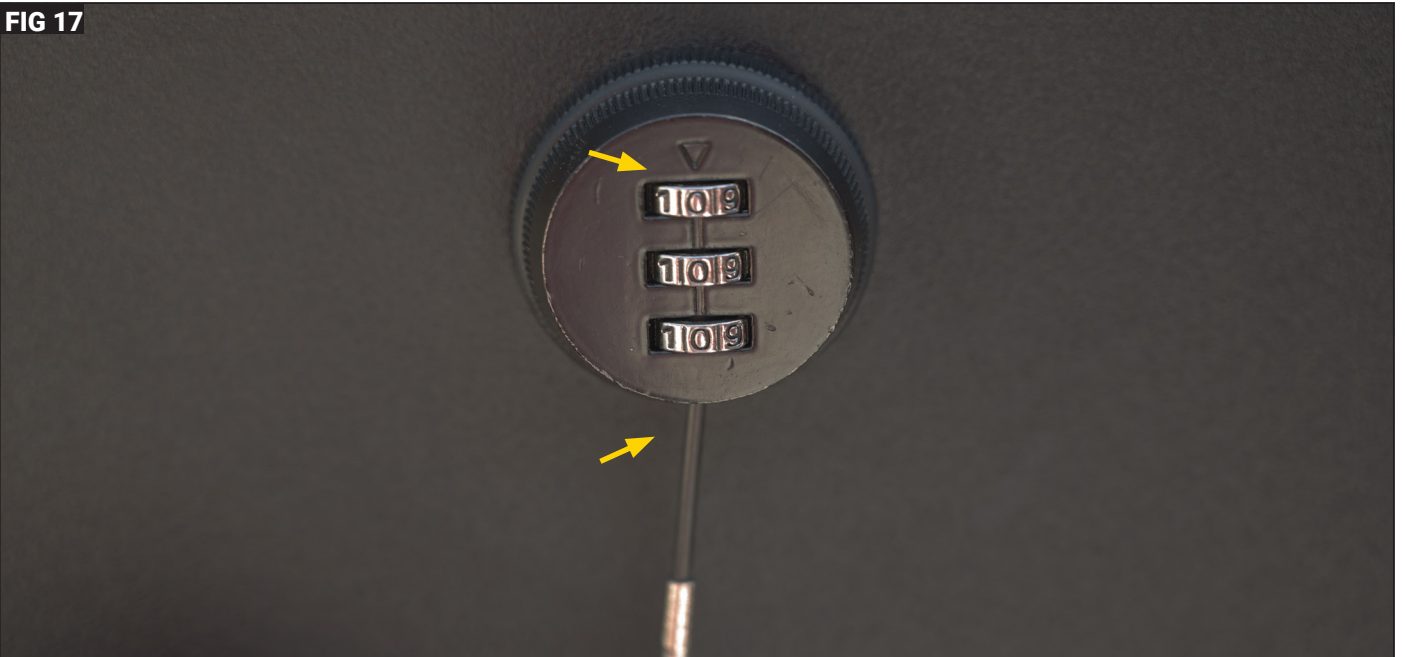
FIG 16



Note: The Molle panel secured to both sides of the inside of the box, will allow you to secure items to either side of the Quadratec Trail and Tool Storage box. (FIG 16)

STEP 7

FIG 17



To set combination lock, turn dial clockwise to the unlock position. (FIG 17) With arrow pointed in the downward position, locate void on opposite side of dial and with a small screw driver, insert and depress. While holding in, you can choose your three (3) digit code of choice and release. (FIG 17)

Quadratec® Exclusive Three Year Limited Warranty

Your Quadratec® branded accessories are covered by the following Limited Warranty provided exclusively by Quadratec, Inc., 1028 Saunders Lane, West Chester PA 19380.

This **Limited Warranty** is the only warranty made in connection with your purchase. Quadratec neither assumes nor authorizes any vendor, retailer or other person or entity to assume for it any other obligation or liability in connection with this product or Limited Warranty. This Limited Warranty does not apply and is not cumulative to any accessory or part distributed by Quadratec for which the Manufacturer provides a separate written warranty.

What is Covered:

Subject to the terms, exclusions and limitations herein and with respect only to Quadratec branded accessories first sold in the United States, Quadratec warrants to the initial retail purchaser only that your Quadratec accessory shall be free of defects in material and workmanship: for a period of three (3) years from date of retail purchase.

This **Limited Warranty** is not assignable and shall terminate upon sale of the vehicle upon which the Quadratec accessory is installed or other transfer to third persons.

All other warranties are hereby disclaimed, except to the extent prohibited by applicable law in which case any implied warranty of merchantability or fitness for a particular purpose on this product is limited to three (3) years from date of initial retail sale. Quadratec reserves the rights to: **(a.) require invoice or other proof your accessory is within the terms of this Limited Warranty as a condition of warranty service and, (b.) make future revisions to this product and Limited Warranty without prior notice or obligation to upgrade your product.**

What is Not Covered:

Your Quadratec Limited Warranty does not cover products or parts Quadratec determines to have been damaged by or subjected to: **(a.) installation damage, alteration, modification, combination with other parts, failure to maintain or improper repair or service, (b.) normal wear & tear, cosmetic damage or damage from moisture or water immersion, (c.) Acts of God, accidents, misuse, negligence, inadequate mounting or impact with vehicle(s), obstacles or other aspects of the environment, (d.) theft, vandalism or other intentional damage.**

Remedy Limited to Repair/Replacement:

The exclusive remedy provided hereunder shall, upon Quadratec inspection and at our option, be either repair or replacement of product or parts (new or refurbished) covered under this Limited Warranty. Customers requesting warranty consideration should first contact Quadratec to obtain a RGA number (610-701-3336). All labor, removal, shipping and installation costs are customer's responsibility.

Other Limitations - Exclusion of Damages - Your Rights Under State Law:

In consideration of the purchase price paid, neither Quadratec nor any independent Quadratec distributor/licensee are responsible for any time loss, rental costs, or for any incidental, consequential, punitive or other damages you may have or incur in connection with any part or product purchased. Your exclusive remedy hereunder for covered parts is repair/replacement as described above.

This **Limited Warranty** gives you specific rights. You may also have other rights that vary from state to state. For example, some states do not allow limitations of how long an implied warranty lasts and /or do not allow the exclusion or limitation of incidental or consequential damages, so the limitations and exclusions herein may not apply to you.

©Quadratec, Inc. 2022. All Rights Reserved.
A4 Version 6/24/22

Instructions Part #12999.3269

Quadratec®