

Quadratec® Tailgate BikePad

for 2019-Current Jeep JT Gladiator
Item #92034.1018



PART LIST:

Tailgate Bike Pad

QTY 1

REQUIRED TOOLS:

Safety Glasses

NOTICE

Before traveling, make sure the front tire assembly of your bike is only resting on the Bike pad. If your bike is touching the tailgate off the pad, damage to the vehicles paint can occur

NOTICE

It is extremely important that you keep the back side of the Bike Pad Clean. Wash the Bike pad with warm Soapy water often to keep dirt and road grime from building up and potentially causing paint damage.

WARNING

Never install this product while the engine is running. Before installing this product, put the vehicle in park and set the emergency brake. Always secure your bike(s) with the safety straps attached to the front of the pad before traveling.

CAUTION

RISK OF EYE INJURY. Safety glasses should be worn at all times while installing or maintaining this product.



The Trusted Source

Important Safety information

Your QuadraTop® Tailgate Bike Pad is intended to provide tailgate protection from carrying bikes on your off-road capable vehicle. Before installation,

please take a moment to review the following safety information and installation instructions. Important safety information is generally preceded by one of three signal words indicating the relative risk of injury. The signal words mean:

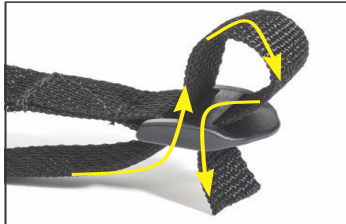
WARNING a hazardous situation which, if not avoided, could result in death or serious injury. You CAN be KILLED or SERIOUSLY HURT if you don't follow instructions.

CAUTION a hazardous situation which, if not avoided, could result in minor or moderate injury. You CAN be moderately HURT and also may suffer property damage if you don't follow instructions.

NOTICE Careful attention is required to this instruction or operation but does generally not relate to personal injury. Damage to your Quadratec® product or other property may result if you don't follow instructions.

When unpacking, carefully check to make sure all parts are included. If any part is missing or broken, please call Quadratec customer service at 800-745-6037.

Pre-Installation of Tailgate Bike Pad



Threading Straps through Buckles:

Throughout the installation, you will need to thread webbing straps through buckles several times. Please review the picture for correct strap routing through the buckles. As a rule of thumb, run the strap below and through the sewn side of the buckle first and then back down through the end of the buckle. Tighten the strap by simply pulling the exposed webbing after threading the strap through the buckle.



Tailgate Bike Pad Installation:

After unpacking the tailgate Bike Pad lay it flat on the ground. With the tailgate closed, position the bike pad on top of the tailgate. Adjust the pad so that the panel rests flat on the tailgate while the pad's lower straps dangling below. Fig 2.



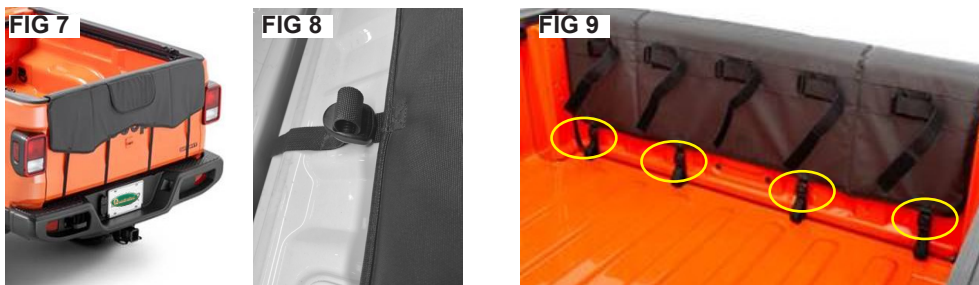
The Trusted Source



Open the tailgate of your vehicle slightly. Through the bottom of the tailgate, slip the two hanging center straps in-between the tailgate and the bed of the truck. Make sure your straps go through the tailgate opening. Fig's 3 & 4.

CAUTION: When using both hands to both hold the tailgate open and slip the strap under the tailgate, be careful not to pinch your fingers as you slip the straps between the tailgate and truck bed.

Bring the straps towards the top of the tailgate and loosely connect the strap to buckle (Fig 5 & 6). Do not tighten these straps yet.



Repeat this procedure for the two outside straps. (Fig's 7 & 8). Tighten and secure all four of the straps (FIG 9-Circled). Adjust the pad by rotating it or pulling it in the direction needed so the front facing safety straps are positioned as shown in FIG 9.

WARNING

Before traveling with the bikes in the back of your truck, the rear safety straps must be secured to the frame(s) of your bike(s). See FIG's 11 & 12 below. Failure to secure your Bike(s) with these straps can cause damage to your vehicle or other vehicles and possible injury or death.



Loading the bikes. Place the bikes on the tailgate, starting from the left side first. Make sure your bike's disc (where applicable) brake is facing out from the pad and the wheel is tilted out where possible. Position the bicycles so the front forks are resting on the bike pad and the back wheels touch the bed of the truck (FIG10). Use great care when placing the bikes inside the rear of your vehicle as not to scratch your truck bed with the pedals. Secure the bikes by hooking the safety straps around the bike frame as shown in FIG's 11 & 12. See Warning above

NOTICE

It is extremely important that you frequently remove the bike pad and clean the back side of the pad that touches your tailgate paint. Use warm soapy water and a soft cloth often to clean and keep dirt and road grime from building up and potentially causing paint damage. After washing the bike pad, let it dry in the sun before re-installing.

Quadratec® Exclusive Three Year Limited Warranty

Your Quadratec® branded accessories are covered by the following **Limited Warranty** provided exclusively by Quadratec, Inc., 1028 Saunders Lane, West Chester PA 19380..

This **Limited Warranty** is the only warranty made in connection with purchase. Quadratec neither assumes nor authorizes any vendor, retailer or other person or entity to assume for it any other obligation or liability in connection with this product or **Limited Warranty**.

What is Covered:

Subject to the terms, exclusions and limitations herein and with respect only to soft tops first sold in the United States, Quadratec warrants to the initial retail purchaser only that your QuadraTop soft top shall be free of defects in material and workmanship for a period of **3 years from date of initial retail sale**.

All other warranties are hereby disclaimed, except to the extent prohibited by applicable law in which case any implied warranty of merchantability or fitness for a particular purpose on this product is limited to 3 years from date of initial retail sale. Quadratec reserves the rights to: (a.) require invoice or other proof your soft top is within the terms of this **Limited Warranty** as a condition of warranty service and, (b.) make future revisions to this product and **Limited Warranty** without prior notice or obligation to upgrade your soft top.

What is Not Covered:

Your Quadratec **Limited Warranty** does not cover products or parts Quadratec determines to have been damaged by or subjected to: (a.) installation damage, alteration, modification, failure to maintain or attempted repair or service by anyone not authorized by Quadratec, (b.) normal wear and tear, cosmetic damage or damage from water immersion, (c.) Acts of God, accidents, misuse, negligence, inadequate mounting or impact with vehicle(s), obstacles or other aspects of the environment, (d.) theft, vanda-

Remedy Limited to Repair/Replacement: The exclusive remedy provided hereunder shall, upon Quadratec inspection and at Quadratec's option, be either repair or replacement of product or parts (new or refurbished) covered under this **Limited Warranty**. Customers requesting warranty consideration on QuadraTop soft top should first contact Quadratec to obtain a RGA number (610-701-3336). All labor, removal, shipping and installation costs are customer's responsibility.

Other Limitations - Exclusion of Damages - Your Rights Under State Law:

In consideration of the purchase price paid, neither Quadratec nor any independent Quadratec distributor/licensee are responsible for any time loss, rental costs, or for any incidental, consequential, punitive or other damages you may have or incur in connection with any part or product purchased. Your exclusive remedy hereunder for covered parts is repair/replacement as described above.

This **Limited Warranty** gives you specific rights. You may also have other rights that vary from state to state. For example, some states do not allow limitations of how long an implied warranty lasts and/or do not allow the exclusion or limitation of incidental or consequential damages, so the limitations and exclusions herein may not apply to you.

The terms Quadratec®, QuadraTop®, Essentials® and Essential® are Registered Trademarks of Quadratec Inc. Registered in U.S. Patent and Trademark Office.

©Quadratec, Inc. 2021. All Rights Reserved. Version 12.14.21

Part # 92034.1018



The Trusted Source