

QuadraTop® Complete Soft Top

for 87-95

Jeep® Wrangler YJ

Item #11100.50XX, 11100.7026



NOTICE

This Complete Soft Top kit is designed to fit on your Jeep® Wrangler when the original soft top or hard top has been completely removed. Before beginning your installation of this product, you will need to remove your existing soft top fabric, hardware or Hard top.

Loss of vehicle control involves risk of death or serious injury, particularly to parts of your body not restrained within vehicle. This product is intended for weather protection only and should not be relied upon to contain occupants in the event of an accident or to protect from either ground contact or falling objects. To reduce risk of accident or injury:

- ALWAYS WEAR SEATBELTS

WARNING

- Always keep head, arms & body parts within vehicle.
- Fully secure or stow the soft top before driving according to instructions. Never try to latch or fold soft top while driving. Do not use if damaged or worn.
- Read and follow all instructions & warnings accompanying this product, in your vehicle owner's manual and Off Road Driving Supplement.

CAUTION

RISK OF EYE INJURY. Safety glasses should be worn at all times while installing or maintaining this product.

HARDWARE PART LIST:

BOW ASSEMBLIES (L & R)	QTY 2
WINDSHIELD CHANNEL	QTY 1
SIDE BELT RAIL (L & R)	QTY 2
CORNER BELT RAIL (L & R)	QTY 2
TAILGATE BRACKETS W/SCREWA (L & R)	QTY 2
BOW CONECTOR	QTY 2
UPPER DOOR WINDSHIELD INSERT (L & R)	QTY 2
TAILGATE BAR	QTY 1
5/16" TORX SCREWS	QTY 12
5/16" TAPPING PLATES	QTY 12
5/16" FLAT WASHERS	QTY 12
#8X1/2" PAN SELF SCREWS	QTY 10
#8X1/4" TAP MOD SCREWS	QTY 11

(Note: There maybe an extra hardware in package)

SOFT PART LIST:

FABRIC TOP	QTY1
QUARTER WINDOWS RIGHT	QTY1
QUARTER WINDOWS LEFT	QTY1
REAR WINDOW	QTY1
UPPER DOOR SKIN RIGHT	QTY1
UPPER DOOR SKIN LEFT	QTY1
DOOR FRAME RIGHT	QTY1
DOOR FRAME LEFT	QTY1

REQUIRED TOOLS:

SAFETY GLASSES
PHILLIPS HEAD SCREWDRIVER
#40 TORX SOCKET AND DRIVER
PLIERS
DRILL
1/8" DRILL BIT (OPTIONAL)
3/16" DRILL BIT (OPTIONAL)
SHOE HORN OR LARGE SPOON
RAZOR KNIFE
PHILLIPS SCREWDRIVER
SOFT BEACH SIZE TOWEL



The Trusted Source

Important Safety information

Your QuadraTop® Complete Soft Top is intended to be used with other Quadra-Top Products to increase the fair weather enjoyment of your off-road capable vehicle. Before installation,

please take a moment to review the following safety information and installation instructions. Important safety information is generally preceded by one of three signal words indicating the relative risk of injury. The signal words mean.

WARNING a hazardous situation which, if not avoided, could result in death or serious injury. You CAN be KILLED or SERIOUSLY HURT if you don't follow instructions.

CAUTION a hazardous situation which, if not avoided, could result in minor or moderate injury. You CAN be moderately HURT and also may suffer property damage if you don't follow instructions.

NOTICE Careful attention is required to this instruction or operation but does generally not relate to personal injury. Damage to your Quadratec® product or other property may result if you don't follow instructions.

Before you begin Installation:

We are excited that you have chosen the Complete Soft Top. This high-quality soft top is designed to provide protection from the elements and a stylish look on your Jeep®. Please note that it is important that you become familiar with the installation process of this top by reading the following instruction sheet and warnings thoroughly.

When unpacking, carefully check to make sure all parts are included. If any part is missing or broken, please call Quadratec customer service at 800-745-6037.

NOTICE For a smooth fit and ease of installation, this top should be installed at temperatures above 72 degrees. Below this temperature, the fabric may contract an inch or more making it difficult to install. We highly recommend taking the top out of the package and letting it sit inside a warm place or direct sunlight for 1-2 hours before you install the top. When warm, this top will install quickly.

Step 1: Windshield Channel Installation



Put on safety glasses. Position the two piece windshield channel on the vehicle lining up the existing screw holes as shown in Fig 1. Once in place, secure the windshield channel using the included 11 #8 x 1/4" tap mod screws. See Fig 2. Note: If installing the windshield channel to the vehicle for the first time (hard top vehicles) or if the holes do not line up, use the windshield channel as a template to drill 1/8" holes for installation.

Step 2A: Install Upper Door Windshield Inserts



IF you are replacing current soft top hardware, locate the upper driver's side upper door windshield insert and position it over the existing holes drilled into the windshield. See Fig 3. Using a Phillips head screwdriver, install four (4) #8x 1/2" Pan Self screws through the existing holes securing the windshield insert to the windshield. See Fig 4. Repeat this procedure for the passenger side. Go to Step three.

WARNING Make sure the Windshield Header and installation bolts are fully secured and tightened. Failure to fully tighten the bolts may cause the header to come off while driving.



The Trusted Source

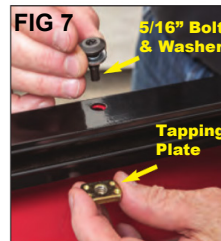
Step 2B: Install Upper Door Windshield Inserts



IF you are installing soft top hardware for the first time, Locate the upper driver's side upper door wind- shield insert and position it over the windshield flange lining up the horizontal reinforcement with the top of the flange. See Fig 5. Using the Windshield insert as a template, mark and drill four (4) 1/8" holes through the windshield flange per side. See fig 6. Using a Phillips head screwdriver, install four (4) #8x 1/2" Pan self screws through the recently drilled holes securing the windshield insert to the windshield. See Fig 4. Repeat this procedure for the passenger side.

Step 3: Side Belt Rail Installation

Locate the driver's side Belt Rail assembly, (4) 5/16" Torx Bolts, (4) 5/16" Washers and (4) 5/16" Tapping plates. Place the side Belt Rail assembly over the top of the body tub lining up each hole with the factory holes in the body tub rail. As shown in Figs 7 & 8, secure the side belt rail with the bolt, washer and then the tapping plate under the body tub lip in all four hole locations. Repeat the above on the passenger side of vehicle.



Step 4: Corner Belt Rail Installation

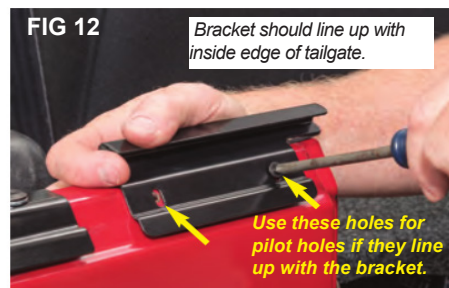


Locate the driver's side corner belt rail assembly, (2) 5/16" Torx Bolts, (2) 5/16" Washers and (2) 5/16" Tapping plates. Place the corner Belt Rail assembly over the top of the body tub lining up each hole with the factory holes in the body corner rail. See Fig 9. As shown above in Fig 7, secure the side belt rail with the bolt, washer and then the tapping plate under the body tub lip in all two hole locations. Repeat procedure on the passenger side of vehicle. See Fig 10

Step 5a: Tailgate Bracket Installation

IF you are replacing current soft top hardware, locate the passenger and Drivers side Tailgate Brackets, (4) #10 -24x 1/2" Phillips machine screws, included in the brackets.

Take the passenger side tailgate bracket and line it up with the existing holes in the rear of the body tub. If the holes line up, use these holes as pilot holes to drill two 3/16" holes. Install the Tailgate bracket using the machine screws, then the star lock washer then the flat washer on the outside of the bracket and the Nylock nut on the inside of the body tub. See Fig 11 & 12. Tighten and repeat this procedure on the Driver's Side.



WARNING

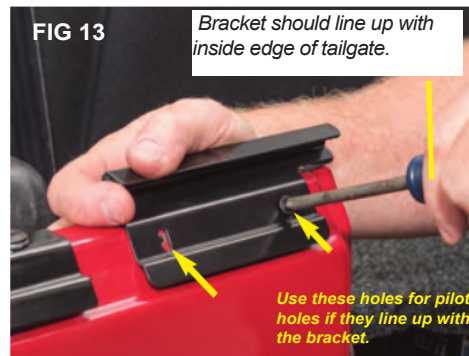
Make sure when drilling that all wiring is moved away from the drill site. Failure to move the wiring can cause damage to your vehicles electrical system.



The Trusted Source

Step 5b: Tailgate Bracket Installation

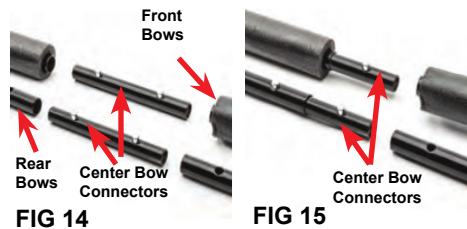
IF you are soft top hardware for the first time, Locate the passenger and Drivers side Tailgate Brackets, (4) #10 - 24x 1/2" Phillips machine screws included. Take the passenger sidetailgate bracket and line it up with the edge of the inside of the tailgate as shown in Fig 13. Using the tailgate bracket as a template, mark and drill two 3/16" holes. Install the Tailgate bracket using the machine screws, then the star lock washer then the flat washer on the outside of the bracket and the Nylock nut on the inside of the body tub. Tighten and repeat this procedure on the Driver's Side.



NOTICE

Make sure when drilling that all wiring is moved away from the drill site. Failure to move the wiring can cause damage to your vehicles electrical system.

Step 6: Front and Rear Bow Assembly



Locate the left and right bow assemblies and (2) center bow connectors. Lay the bow assemblies on a soft surface lining up the two assemblies' top and bottom tubes with the bow connectors in-between each bow. See Fig 14. Attach the bow connectors to the center bows lining up the push buttons to the holes in the front and rear bows. Note: It will be helpful to pull back the foam on the front bows to expose the holes in the bows to line up the push buttons. See Fig 15.

NOTICE

Steps 7 & 8 Will be easier with the help of a second person.

Step 7: Attach Bows to Side Belt Rails

Slide the ends of the front and rear bow assemblies into the tracks located on the inside of the side belt rails. These ends should be slid in from the rear of the vehicle towards the front of the vehicle and if possible, both driver's and passenger sides should be slid in together to prevent binding. See Fig 16. Once the bow assemblies are slid into the side belt rail tracks, locate and insert the side rail pin into the pre-drilled hole on the top of the side belt rail. See Fig 17a.

Note: The ends of the rear bow assembly should be placed in front of the notch shown with the green dot in Fig 17b.



The Trusted Source

Step 8a: Attach Bows to Windshield Inserts

FIG 18



FIG 19a



Unfold the flat vertical and horizontal stamping and slide the front bow (with foam) forward raising the horizontal over door surround towards the front windshield. The front and rear bows should lock into the notch in the belt rail. See Figs 18 & 19a.

Note: The ends of the front bow assembly should be locked into the most forward notch as shown with the green dot in Fig 19b. If placed in the rearward notch, you will not be able to close your doors as the bow will interfere.

FIG 19b

Inside of the side belt rail(Front)



Step 8b: Attach Bows to Side Belt Rails

FIG 20



FIG 21



With the bow assemblies in place, insert the plastic locking tab over the windshield inserts large pin and slide the tab towards the rear of the vehicle locking the over door surround in place. See Figs 20 & 21. Repeat procedure on opposite side of vehicle.

WARNING

Make sure the upper door rail is securely locked into place prior to installing a soft top or driving. Failure to do so may cause personal injury or damage to the vehicle/soft top if it is not locked into place.

Step 9: Position the Top on the Vehicle

FIG 22



Place the soft top fabric on the top of the hardware system. The plastic header should be facing forward and the two rear corners should be facing down. See fig.22.

FIG 23



Step 10: Attach New Fabric to Bows

Locate the front and the rear snap straps and snap each to the front and rear bows securing the top to the hardware system. See Figs. 23, 24 & 25.



NOTICE

If your original factory hardware has been replaced with an after-market version, the center snap strap will not be used. If this is the case, remove the center snap and fabric.



The Trusted Source

Step 11: Install Top Fabric into the Windshield Channel

FIG 26



FIG 27



Insert the front plastic windshield retainer strip sewn along the front of the top into the Windshield Channel front slot. Do not catch any fabric in the channel. While installing, make sure the top is centered side to side in the channel so that there is an equal distance from the center of the windshield. See Figs 26 & 27.

Step 12: Secure the Front Bow Assembly

FIG 28



FIG 29



Push the front bow assembly all the way forward into the notch found on the side belt rail. See Figs. 28 & 29.

FIG 30



Make sure the white clear plastic is NOT hooked into the belt rail.

Step 13: Install Rear Corners

With the rear bow not completely engaged, install rear corners into the corner belt rails ensuring the clear/white plastic reinforcement are not hooked into the railing. Line up edge of the plastic strip with the edge of the retainer. Repeat on the other side. See Fig.30.

Step 14: Secure the Rear Bows

Push the bottom of the rear bow back towards the rear of the vehicle until it snaps into place. Make sure the fabric rear corners are still engaged. Note: the first time this is done it will be very tight. See Figs 31 & 32.

FIG 31



FIG 32



FIG 33



FIG 34



Step 15: Lock Spreader Bars in Place

With the rear bows secured, push up on the spreader bars until they lock into place. Make sure when pushing up on the spreader bars that you go straight up and not up and "inwards" while pushing. Pushing inwards will damage your spreader bars. See Figs 33 & 34.



The Trusted Source

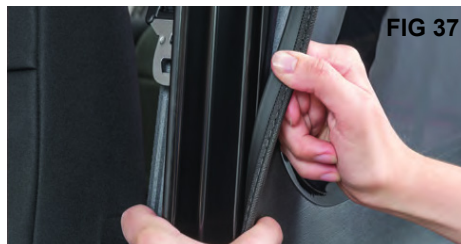
Step 16: Install Side Curtains



Release the spreader bars. Line up and attach the top and side zippers on the side curtains approximately 2-3 inches. Note that the side zipper may not line up with the corner fabric unless you slide the corner fabric around in the belt rail towards the front of the vehicle. Once the side zipper is attached and zipped up 2-3 inches, you can slide the corner back around towards the rear of the vehicle and line up the black plastic strip with the edge of the retainer. See step 16 and see Figs 35 & 36.

Step 17: Insert Side Curtains into Vertical Door Surround Retainer

With the top and side zippers still only partially closed 2-3", slip the plastic strip on the front of the side curtain into the retainer channel support bow. See Fig 37.



Step 18: Attach Side Curtains to Body Belt Rail

While pulling down, slip the side curtain bottom retaining channel into the body belt rail starting from one end and pressing down to the other as shown in Figs 38 & 39.



Completely zip up side curtain Zippers, re-engage spreader bars and then completely zip top side curtain zipper. See Fig 40. Repeat steps nine through eleven on the other side of the vehicle.

Step 19: Install the Rear Curtain

Attach the Top Zipper on the rear curtain to the top. Zip across 3-6" only. Attach both side zippers on the rear curtain to the top zipping them down about 3-6". See Figs 41 & 42.



Step 20: Install Tailgate Retainer

With the rear curtain loosely installed, open the tail gate and slide the rear curtain retainer onto the bottom of the rear curtain. See Fig 43.



Step 21: Securing the Rear Tailgate Retainer

With the rear curtain attached, “roll” the rear tailgate bar into the two rear tailgate retainers. Once engaged into the retainers, slip the rear curtain plastic retainers into the bottom of the tailgate retainer channel. zippers closed.



See Figs 44, 45 & 46. Zip the rear curtain top and two side zippers closed.



Step 22: Snap Top Over Door Snaps

Fasten snaps on top to the over door sliding studs on hardware. Snaps should easily slide to match snap locations on the top. See Fig 47.

The Soft top portion of the installation is now complete.

WARNING

When using a razor knife, be sure to keep hands, fingers and other body parts safely away from the knife blade. Use extreme caution as serious injury can occur.

FIG 48



Step 23: Remove Old Upper Door Skins

Remove the upper door fabric from the door frames. Use a razor knife to carefully cut the stitches on the upper door frame fabric and remove them from the metal door frame. See important warning at left.



Step 24: Install Your Upper Doors to Hard Half Doors

Install upper doors to hard half doors. Insert the pins into the door grommets in the lower hard half doors. Note that for the doors to work properly the door grommets must be un-damaged and in place. Snap the front snap on the front of the door to the snap stud on the hard half door. Work the plastic retaining strip into the door rail to secure the upper door to the hard half door. See Fig 48 & 49.

The Complete Soft top Kit with Upper Doors installation is now complete.

WARNING

Your Quadratop Door skins are designed to fit over your factory supplied door frames and will only provide protection from the elements. Do not rely on these soft upper doors to contain the occupants within the vehicle or to protect against injury during an accident. WEAR SEAT BELTS AT ALL TIMES.



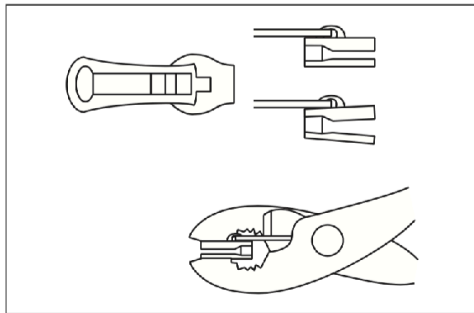
The Trusted Source

Care and Maintenance:

Your QuadraTop is made of the finest materials available but to keep it looking new and for the maximum possible wear, it will need periodic cleaning and basic maintenance. The main threats to your soft top are pollutants, dirt and grime. By keeping your soft top clean you will prolong the life of your top. We recommend the following to keep your top like new:

Washing: The soft top fabric should be washed often using a mild soap, warm water and a soft bristle brush (do not use the brush on the window glass!). You can also use special soft top cleaners available on our website and shown on page 15. Make sure that after cleaning you rinse with clear water to remove all traces of soap.

Zippers: Keeping the zipper cleaned and lubricated with a silicone lubricant (see Page 15) will help prevent damage and keep the zippers in a smooth working condition. If zipper opens behind the slider, the slider may have been spread apart. This problem can usually be fixed



by using an ordinary pair of pliers to bring the sides back into parallel. Return slider to the end of the zipper in the normal Open position. Squeeze lightly at first and test zipper. If the zipper continues to remain open squeeze more firmly with pliers and try the zipper again. Repeat procedure until your zipper operates correctly.

Windows: It is very important that you keep your QuadraTop windows clean! Use a mild soap and water solution to gently clean your windows. NEVER wipe your windows clean with a dry cloth! Dust and dirt on a dry cloth can scratch your windows causing "fog-ging" and permanent damage. When removing your windows, store them with a towel between the panels/rear windows to protect them from damage. If frost or ice forms on the outside of your windows during the winter, DO NOT use an ice scraper to remove this frost. Over time you will see small micro scratches in your windows which are natural wear and tear. These Micro scratches can be "polished" out using the window polish listed on page 15 (Available at Quadratec.com).

Water/Fabric: In the event of seeping through the seams, 3M Scotchgard® may be applied on the inside of the seams to stop the seep. Rips in the fabric may be repaired with Bondex® iron on patches. Iron the patches to the Inside of the top, carefully following the Bondex® instructions.

Snap: Keep snaps cleaned and lubricated with silicone to help prevent snaps from sticking to the studs. If a snap does become stuck to a stud, use a screwdriver and GENTLY pry apart to prevent permanent damage to the snap or the top fabric.



The Trusted Source

Quadrtec Limited Warranty

for QuadraTop® Replacement Soft Tops

Your QuadraTop® replacement soft top is covered by the following Limited Warranty provided exclusively by Quadrtec, Inc. 1028 Saunders Lane, West Chester, PA 19380.

This **Limited Warranty** is the only warranty made in connection with purchase. Quadrtec neither assumes nor authorizes any vendor, retailer or other person or entity to assume for it any other obligation or liability in connection with this product or **Limited Warranty**.

What is Covered:

Subject to the terms, exclusions and limitations herein and with respect only to soft tops first sold in the United States, Quadrtec warrants to the initial retail purchaser only that your QuadraTop soft top shall be free of defects in material and workmanship **for a period of 3 years from date of initial retail sale**.

All other warranties are hereby disclaimed, except to the extent prohibited by applicable law in which case any implied warranty of merchantability or fitness for a particular purpose on this product is limited to 3 years from date of initial retail sale. Quadrtec reserves the rights to: (a.) require invoice or other proof your soft top is within the terms of this **Limited Warranty** as a condition of warranty service and, (b.) make future revisions to this product and **Limited Warranty** without prior notice or obligation to upgrade your soft top.

What is Not Covered:

Your Quadrtec **Limited Warranty** does not cover products or parts Quadrtec determines to have been damaged by or subjected to: (a.) installation damage, alteration, modification, failure to maintain or attempted repair or service by anyone not authorized by Quadrtec, (b.) normal wear and tear, cosmetic damage or damage from water immersion, (c.) Acts of God, accidents, misuse, negligence, inadequate mounting or impact with vehicle(s), obstacles or other aspects of the environment, (d.) theft, vandalism or other intentional damage.

Remedy Limited to Repair/Replacement: The exclusive remedy provided hereunder shall, upon Quadrtec inspection and at Quadrtec's option, be either repair or replacement of product or parts (new or refurbished) covered under this **Limited Warranty**. Customers requesting warranty consideration on QuadraTop soft top should first contact Quadrtec to obtain a RGA number (610-701-3336). All labor, removal, shipping and installation costs are customer's responsibility.

Other Limitations - Exclusion of Damages - Your Rights Under State Law:

In consideration of the purchase price paid, neither Quadrtec nor any independent Quadrtec distributor/licensee are responsible for any time loss, rental costs, or for any incidental, consequential, punitive or other damages you may have or incur in connection with any part or product purchased. Your exclusive remedy hereunder for covered parts is repair/replacement as described above.

This **Limited Warranty** gives you specific rights. You may also have other rights that vary from state to state. For example, some states do not allow limitations of how long an implied warranty lasts and/or do not allow the exclusion or limitation of incidental or consequential damages, so the limitations and exclusions herein may not apply to you.

The terms Quadrtec®, QuadraTop®, Essentials® and Essential® are Registered Trademarks of Quadrtec Inc. Registered in U.S. Patent and Trademark Office.

©Quadrtec, Inc. 2020. All Rights Reserved.
Version 2.10.25

Part # 941048.01



The Trusted Source