



CFE PRODUCTS MODEL # JLJT-CBFMK

Jeep JL Wrangler & JT GLADIATOR Pick Up Fender Mount CB Antenna Kit 2018 & UP

Rev
P65

Parts Included:

1. Custom Stainless Steel Fender Mount
2. Low Profile 18 ft. Cable
3. Custom Wound 3ft Super Flex Antenna
4. One 6mm Fender Bolt
5. Three Stainless Steel Tie Straps
6. 4ft heat shield
7. Replacement floor gourmet

Your New Antenna is custom wound and pre-tuned to match your Jeep. No further adjustment is necessary.

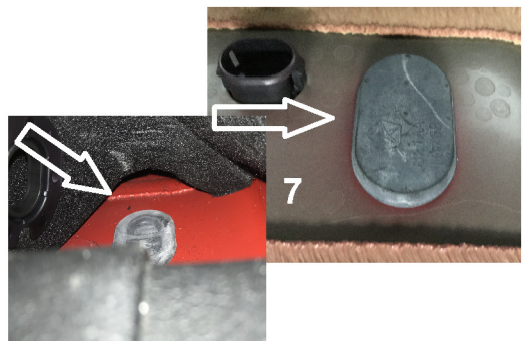
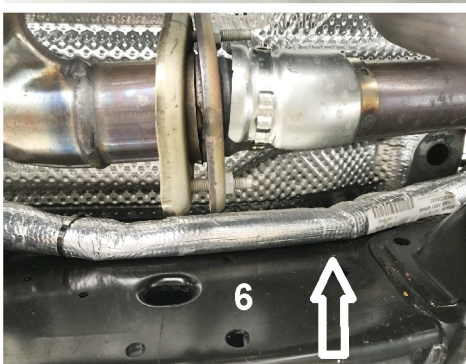
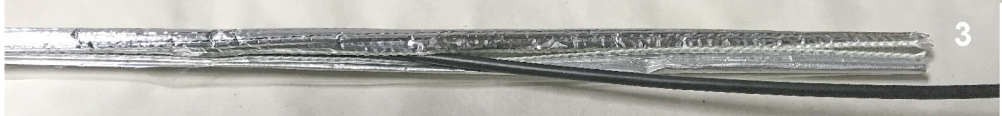
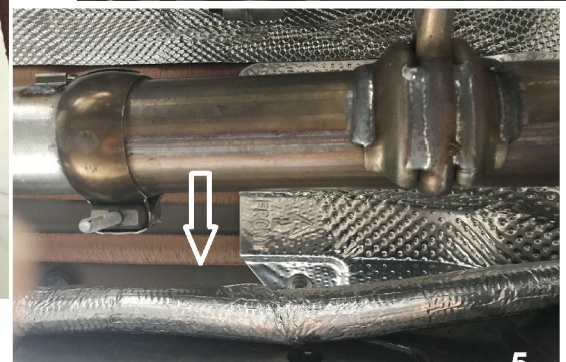
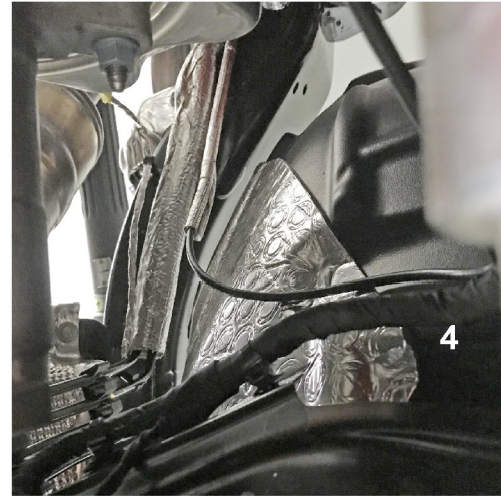
This product can expose you to chemicals including vinyl chloride and lead, which is known to the state of California to cause cancer and birth defects or other reproductive harm. For more information go to www.P65Warnings.ca.gov

WARNING



INSTALLATION INSTRUCTIONS

1. The Fender Mount is designed to be installed on the driver's side.
2. Remove the bolt as shown in picture #1 using a 10mm socket.
3. As an optional precaution to prevent scratching of the paint, turn the mount upside down and put a piece of black tape along the bend as shown in picture # 1.
4. Install the mount using the screw supplied in the kit with a 10mm socket as shown in picture # 2. **It is very important that you use the screw supplied with the kit. This screw is not painted and will ground the mount to the fender. The paint on the original screw prevents proper grounding of the mount which can cause very poor performance from the antenna.**
5. The next step is to install the Heat Shield on the cable, as shown in picture # 3.
6. Run the cable into your Jeep along the frame rail as shown in picture # 4 , 5, & 6. Strap the cable to the heat shield that also runs along the frame rail using the stainless steel ty-straps supplied in the kit. Do not pull the ty-straps . Leave the straps loose at this time. Continue to run the wire along the frame rail to the end of the front driver side door. You will notice a gourmet in the floor at that location. Lift up the carpet under the driver seat and pop out the factory grommet . Save this grommet . Using the new grommet run the cable into the jeep. Pull all the extra cable into the jeep. Run the cable around the console to the CB. Leave any extra cable under the carpet . Do not coil up the extra cable, make long loops under the carpet. Do not attempt to shorten the cable, the length is critical for proper antenna operation.
8. After the antenna is installed, you can use the two 1/4 - 20 bolts to adjust the antenna so that it is straight.
9. When the installation is complete you can go back and tighten up the stainless steel ty-straps . Just make them snug, do not over tighten .



Questions or Comments ? call CFE PRODUCTS @ 610 358 1886 / ASK FOR BOB