



**RUST  
BUSTER**  
FRAME REPAIR

**RB2009**

**Jeep® YJ Wrangler  
Upper Rear Shock Mount**



**REQUIRED TOOLS**

Jack Stands or Lift  
Mig Welder  
Paint/Primer  
Locking Pliers  
Hand Grinder  
Cutting Wheel or Torch  
Welding Gloves  
Welding Hood/Shield  
Ear & Eye Protection  
Sockets & Ratchet  
Fire Extinguisher & Water

**KIT CONTAINS**

Upper Rear Shock Mount  
- Fits DRIVER & PASSENGER sides  
M12 Flat Washer  
M12x1.5mm Nyloc Nut

**QTY**

1  
  
1  
1



**RUST  
BUSTER**  
FRAME REPAIR

**RB2009**

**Jeep® YJ Wrangler  
Upper Rear Shock Mount**

**1) PREPARING YOUR VEHICLE**

Begin by disconnecting your battery prior to starting your installation.

Inspect your vehicle for leaking fuel lines, fuel tank and engine components. If you have fuel leaks repair all leaks prior to starting your installation. If your fuel tank is near your welding area **remove your tank prior to welding.**

Remove all combustible items above the work area such as seats, carpets, padding, etc.

**Keep all flammable materials away from the vehicle work area.**

**2) PREPARING YOUR WORKSTATION**

Keep a fire extinguisher and water close by in the case of fire and make sure you always have a designated "Fire Watch" to assist during the cutting or welding phases.

Abide by all apprenticed welding safety standards and practices.

Always use appropriate welding eye protection, ear protection, and work and fire safety gloves during the installation and within the work area.



**WARNING!**

If you are unsure on how to perform the installation or how to operate any of the required tools listed above, it is **HIGHLY** advised that you enlist the work of a certified welder/installer.

Failure to follow proper safety precautions and instructions may result in serious injury. **The user assumes all liability when installing the product.**



**RUST  
BUSTER**  
FRAME REPAIR

**RB2009**

## Jeep® YJ Wrangler Upper Rear Shock Mount

### 3) PREPARING FOR YOUR INSTALL

Lift your vehicle.

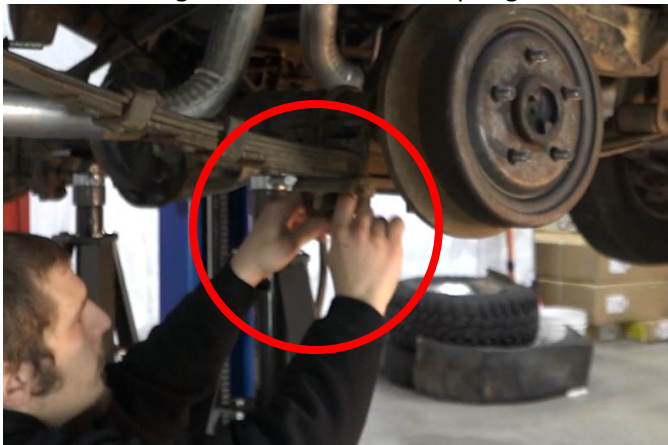
Remove the rear wheels and set them out of the way.

Support your rear axle using two jack stands for the driver and passenger sides.

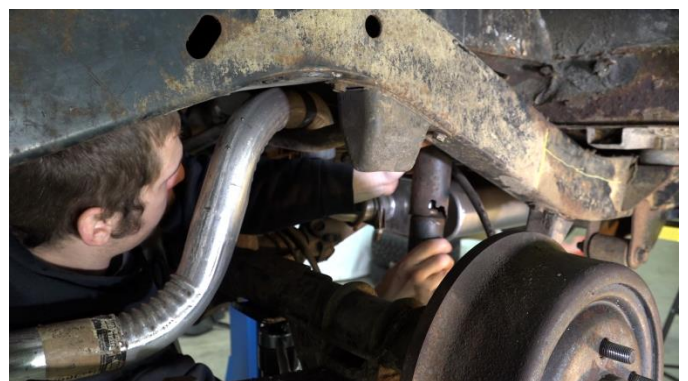
Drop and remove the gas tank and all cords and tubes associated with it, and plug/cover the remaining tubes to prevent fume leakage\*. Place it safely outside of your workstation as it poses as a fire hazard during installation. \*This is only recommended for the driver side modification.



Using two 19mm sockets, remove the lower strut bolt connecting the shock to the leaf spring first.



Remove the upper strut bolt connecting the shock to the Upper Rear Shock Mount and remove the shock.



Depending on how you intend to cut, clean the cut zones free of rust and down to bare metal.



# RUST BUSTER

FRAME REPAIR

RB2009

## Jeep® YJ Wrangler Upper Rear Shock Mount



Make note of, or mark and trace, the OEM location before removal to aid in the replacement of the new part.



### 6) WELDING PREP

Once the part has been fitted, prepare your weld zones by clearing away any rust or debris, revealing bare metal.

### 4) CUT

Begin cutting away the Upper Rear Shock Mount as close to the frame rails as possible without damaging it, and remove any remaining material until the frame rails are flush.



### 5) TEST FIT PART

Place the part onto the OEM frame location. Check to see if it rests evenly on the rail, with no gaps, and take note of any difficulties. Continue to cut away any obstructions.



(OPTIONAL): Coat the part with a weld-able primer or other rust inhibitor to help prevent or reduce the risk of rust formation.





# RUST BUSTER

FRAME REPAIR

RB2009

## Jeep® YJ Wrangler Upper Rear Shock Mount

Replace the part and C-clamp and tack weld it into place to prevent it from moving later.



NOTE: If your vehicle's ride height has been modified, confirm the fitment and alignment of the shock prior to welding as it may be different and require additional modifications.

### 7) WELD

Remove any remaining potential fire hazards on both the vehicle and surrounding area. Following proper welding procedures begin welding the part onto the frame rails.



100% weld around all edges.

### 8) PAINT AND PROTECT

If you chose not to protect your support in (Step 6), coat the part and work area with a primer or other rust inhibitor to help prevent or reduce the risk of rust formation.

### 9) REASSEMBLE VEHICLE

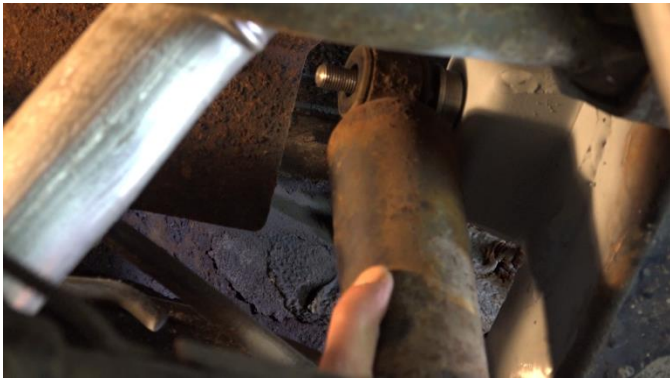
Begin reassembling your vehicle by starting with the included upper strut bolt and your shock.



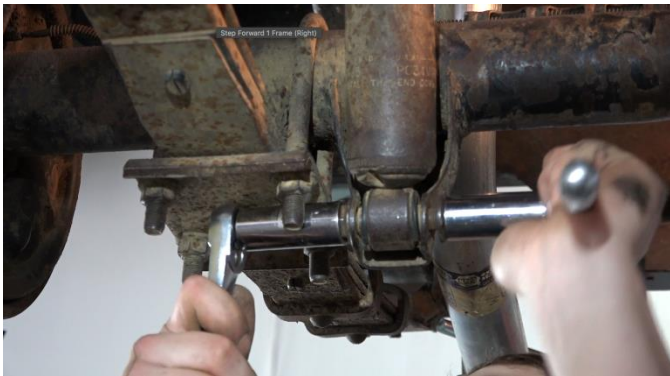
**RUST  
BUSTER**  
FRAME REPAIR

**RB2009**

**Jeep® YJ Wrangler  
Upper Rear Shock Mount**



Reassemble the lower strut bolt and shock.



Reinstall your gas tank, cords, and tubes.

Reinstall your wheels.

Reconnect your battery.