

**RBGL-03****Gladiator Rear Bumper with Drawer****WARNINGS/CAUTIONS BEFORE STARTING INSTALLATION**

**Before you install this kit – Read and understand all instructions, warnings, cautions, and notes contained in this installation instruction guide. Consult your vehicle owner's manual for proper disconnection of electrical and lifting of vehicle if required for installation of this product.**

This install may require some technical skills and knowledge of basic mechanical work. If you do not feel that you are capable of performing this install please take this product to a trained professional.

After reading this guide please contact us with any questions or concerns before installing product.  
Customer Service: 855-680-9595

*DV8 Offroad is not responsible for any bodily injury or harm to you or your vehicle as a result of an improper install.*

Proper installation of this kit requires knowledge of the factory recommended procedures for removal and installation of original equipment components. We recommend that the factory shop manual and any special tools needed to service your vehicle be on hand during the installation. Installation of this kit without proper knowledge of the factory recommended procedures may affect the performance of these components and the safety of the vehicle.

• *Always wear eye protection when operating power tools.* •

*Inspect all contents of this package to make sure product is not damaged and all installation hardware has been included. If parts are missing from kit, please be prepared to provide the following information:*

1. Name of purchase location
2. Bar Code on side of box
3. Date above bar code
4. Date inside box cover

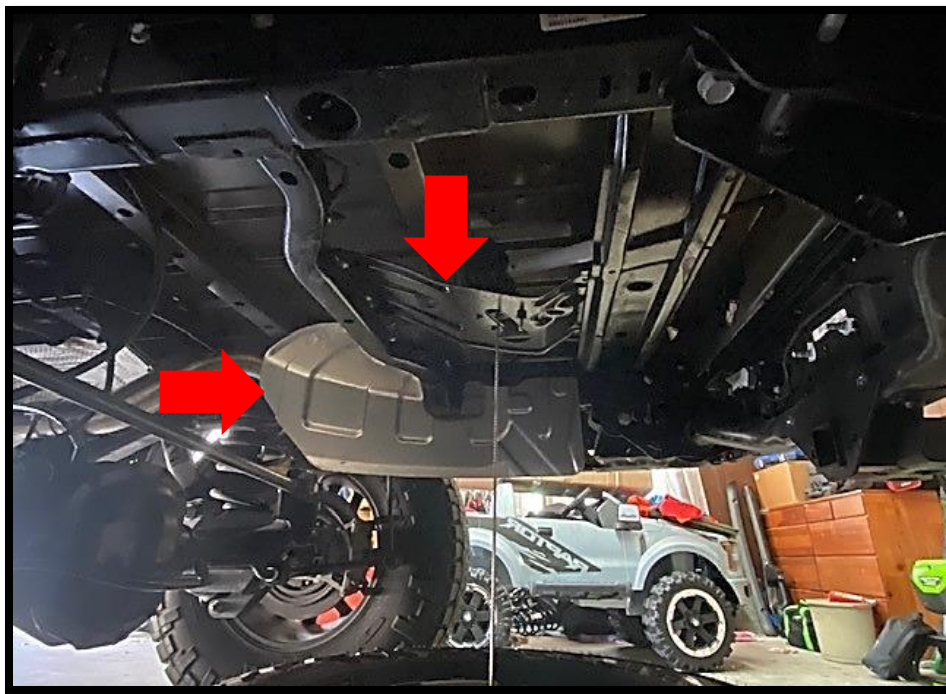


# INSTALLATION MANUAL

1. Begin by opening your new bumper and inspecting all items for damage or missing items.
2. Remove factory bumper and tie up wiring for license plate lights and sensors if applicable.
3. Using Mopar provided tools, drop spare tire and remove tire.
4. Using a cut off wheel, trim off license plate/ bumper support bracket at red dashed line.



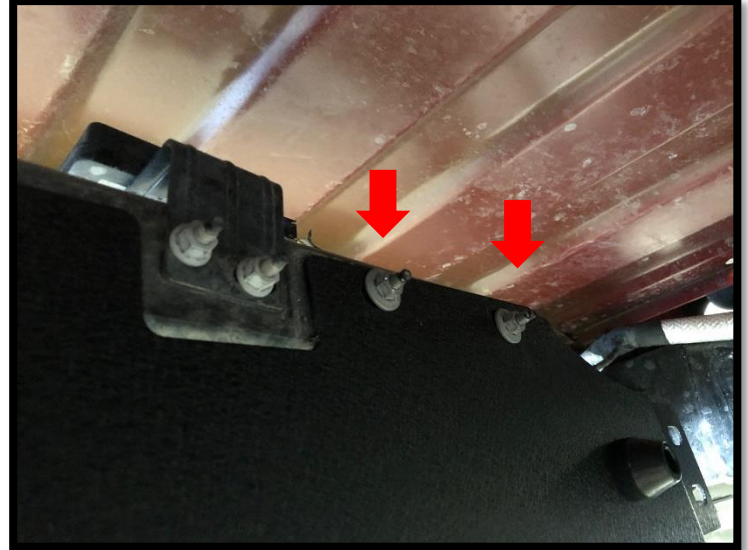
5. Next, remove heat shield and bracket that holds spare tire pulley.





# INSTALLATION MANUAL

6. Begin by installing the rear bracket. Note the orientation in the image. Using factory hardware, loosely secure this to cross member as shown.



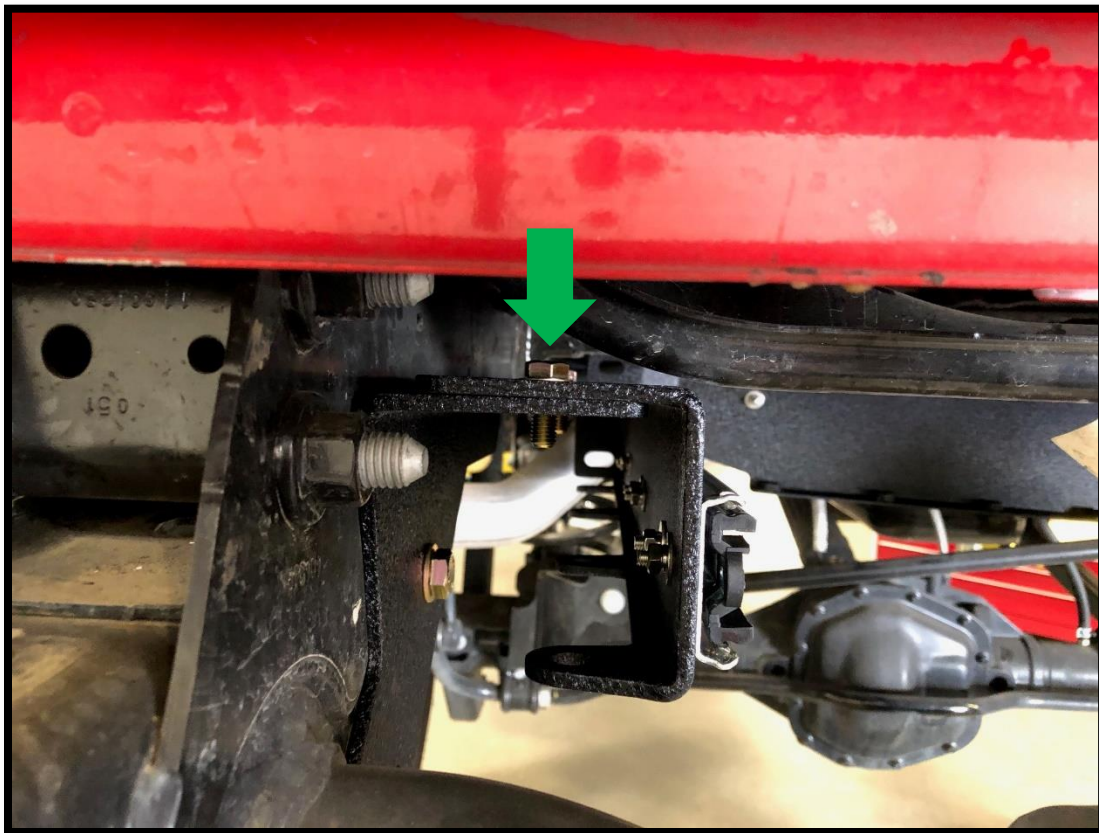
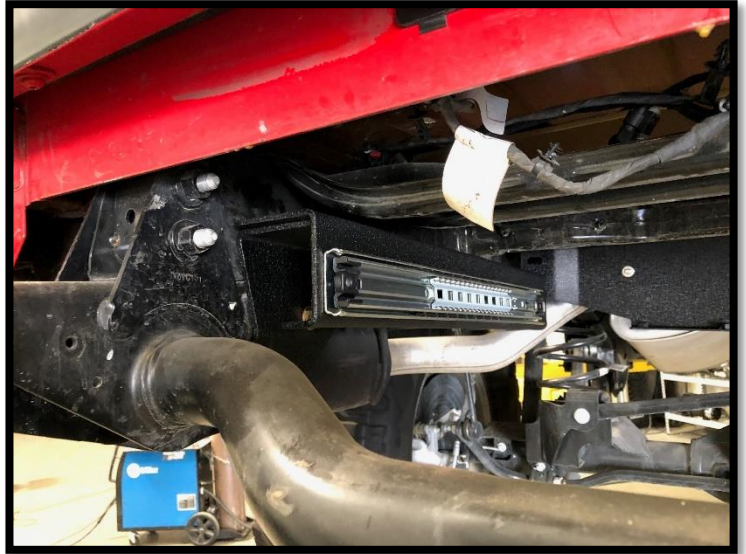
7. Install forward side brackets using the M12x30mm bolts and associated nuts and washers. (**NOTE:** Keep all hardware loose to allow for adjustment when drawer is installed)



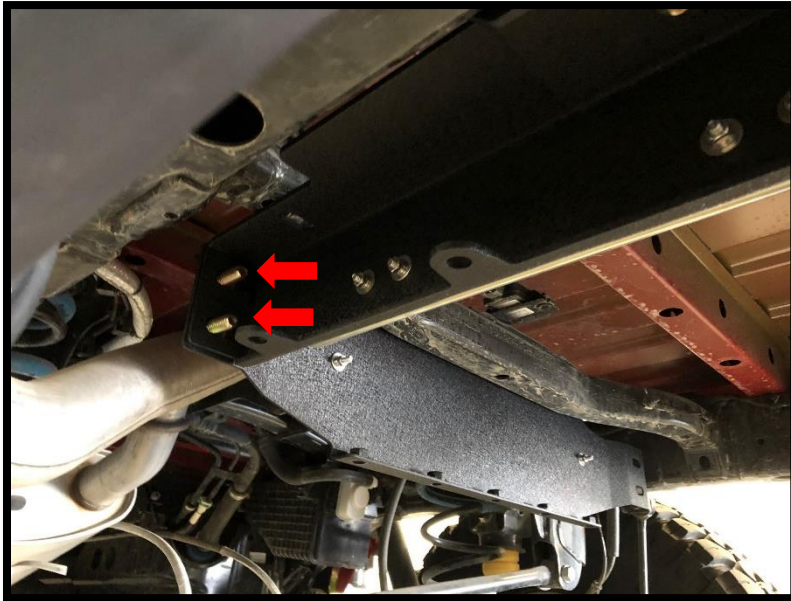


# INSTALLATION MANUAL

- Place brackets with rails onto each forward bracket as shown. Use the image for orientation of each bracket. When placing bolts into these brackets, feed the bolt from the top as shown in the image below with the M12x30mm bolts. This makes tightening them during adjustment much easier.



9. Loosely attach the rear bracket to rail brackets with the same hardware on both sides.



10. Reverse the rubber bumpstops to face towards the rear of the vehicle. They are faced on the wrong side for packing reasons. This is what the rear should look like prior to installing the bumper.





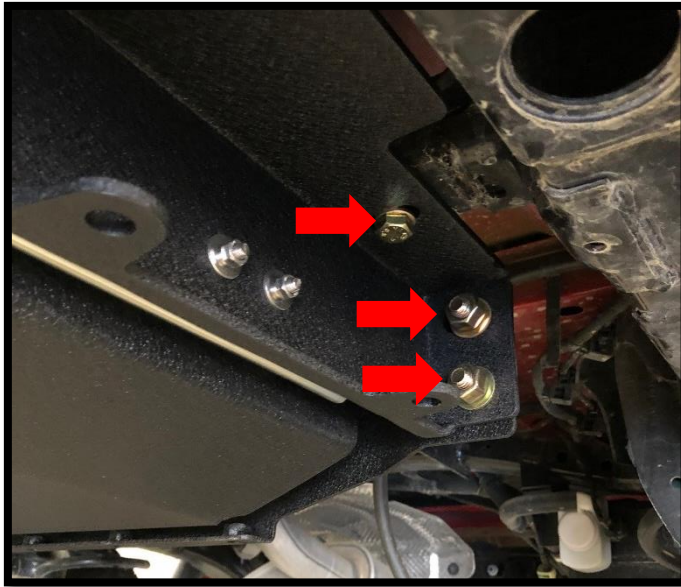
11. With help, loosely mount the rear bumper using the supplied M12x40mm bolts. Center the bumper and tighten. (**NOTE:** use the side of the bumper and the gap between the sides to help with centering the bumper.)



12. Pull the slide rails out, and with help, line up the drawer and push in. This may be tight, however do not force the drawer. Also take note that the drawer will most likely hit the bumper. This is normal and will be adjusted in the next steps. Do not damage the coating on the drawer or bumper, but the drawer does need to be closed for the next steps.



13. Once drawer is closed. Move to the back and tighten these three bolts on each side.

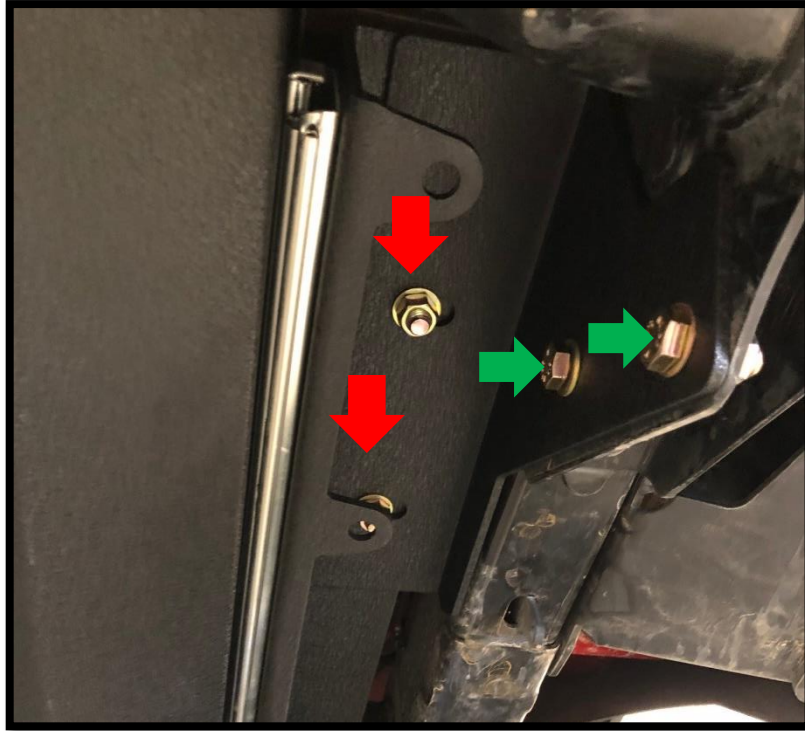


14. Place a pry bar or large flat head screwdriver between front of drawer and hitch on the underside and lift. Do this until there is 1/8" - 1/4" gap between drawer and footstep of bumper.





15. Starting with the forward side brackets, tighten all hardware. Then work your way back down each side rail bracket until secure. Green arrows then red.

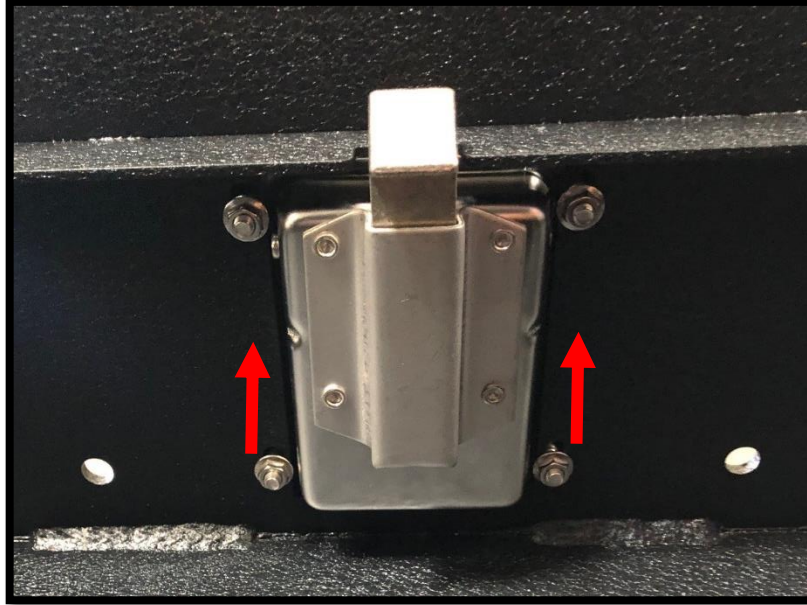


16. Using the provided long nut plate, insert plate with nut upward into frame in hole shown. Using provided hardware, tighten bolt.





17. Next close drawer and check handle adjustment. If the handle is not latching adjust handle so drawer latches properly by moving the handle up.



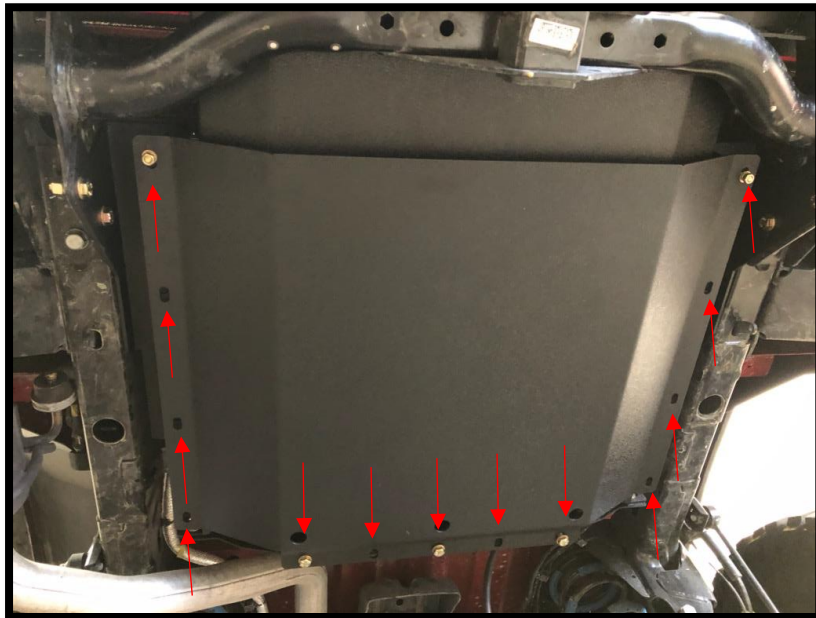
18. Once drawer is working properly, install the provided flip down license plate kit. The flip down will pull down from the top.



19. Using the two tapered Allen head bolts, install the trail plug. The bottom lip should be facing out to the back of the vehicle as shown below.



20. Lastly, using the remaining supplied hardware, install the skid plate to the bottom of the drawer. The remaining long volts will go in the back-rear holes with the shorter around the sides.



**If you have any questions or concerns, please call us at 951-680-9595 or email us at [info@dv8offroad.com](mailto:info@dv8offroad.com)**