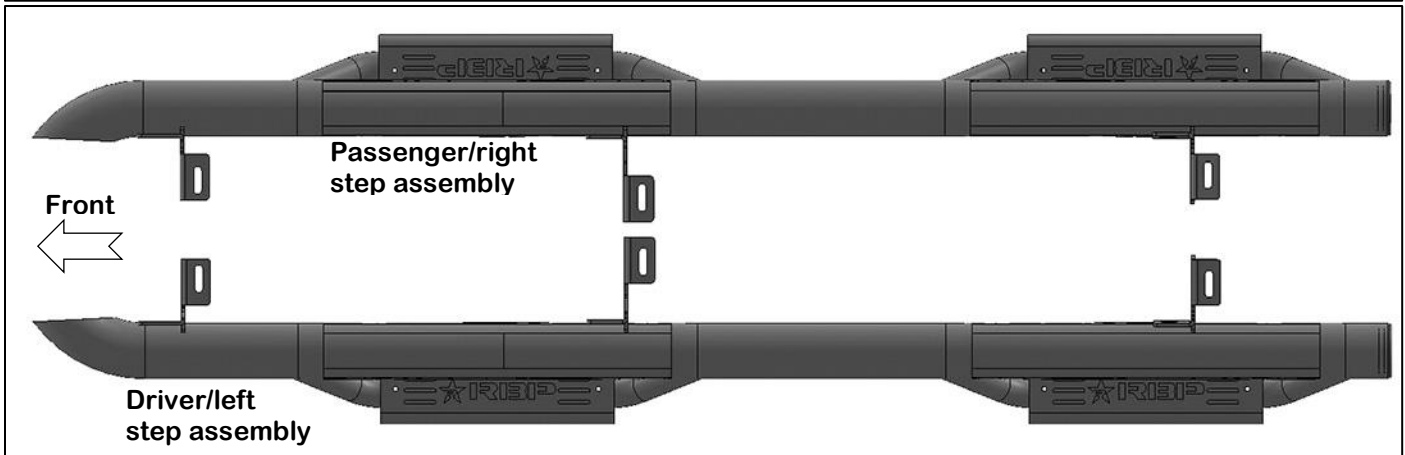




2007-2016 JEEP WRANGLER UNLIMITED FOUR DOOR RX7



| HARDWARE INCLUDED | | | | RECOMMENDED TOOLS | |
|-------------------|---------------------------------|---|----------------------------------|-------------------|------------------------------------|
| 12 | 8-1.25mm x 30mm Hex Bolt | 4 | 10mm Nut Plates | 1 | 13mm Wrench and Socket |
| 12 | 8mm Lock Washer | 4 | 10-1.5mm x 35mm Hex Bolt | 1 | 16mm Wrench and/or Socket |
| 18 | 8mm x 28mm OD x 3mm Flat Washer | 4 | 10mm Lock Washer | | 3/8 Ratchet w/3" and 6" Extensions |
| 6 | 8mm Hex Nuts | 4 | 10mm x 34mm OD x 2mm Flat Washer | | Drill & 5/16" Bit |

STEP 1- Select the driver side RX7 Step, (curved end goes toward the front of the vehicle).

STEP 2- Remove any old steps or factory installed "Rock Rails" and hardware from vehicle.

STEP 3- Start installation on the driver side of the vehicle. Locate the (3) pairs of holes in the pinch weld. The Step will bolt to the forward hole in each location, (Figure 1). If necessary, hold the driver side RX7 Step up in position to help determine correct mounting holes to use.

STEP 4- Remove any tape, sealant or insulation that may be covering the inner mounting locations on the bottom of the floor panel, (Figure 2).

STEP 5- Line up the (3) brackets on the Step with the holes in the pinch weld. Select (1) 8mm Hex Bolt from the hardware bag. Insert the 8mm Hex Bolt into each of the (3) holes in the pinch weld to make sure that there is clearance, (Figure 3). NOTE: Due to manufacturer tolerances, it may be necessary to use a 5/16" drill bit to open up the holes in the pinch weld.

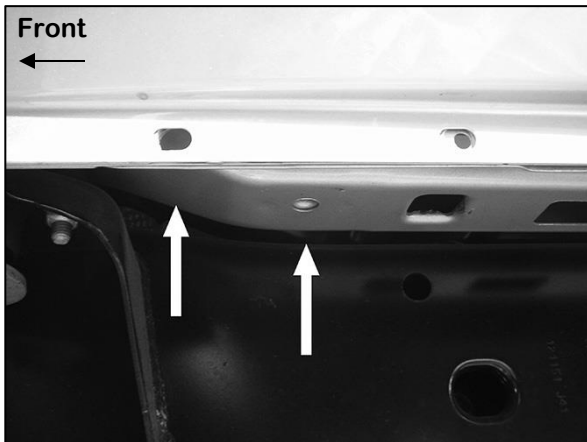
STEP 6- Attach the Step to the (3) forward mounting holes in the pinch weld with (3) 8mm Hex Bolts, (6) 8mm Flat Washers, (3) 8mm Lock Washers and (3) 8mm Hex Nuts, (Figure 3). Leave hardware loose at this time.

STEP 7- Next, line up the top mounting tab on each of the brackets with the hole in the bottom of the channel. Determine if the vehicle has an open floor panel, (Figure 4), or a threaded hole in the floor panel for the mounting tab, (Figures 1 & 8).

- a) **Vehicles with open mounting location:** Insert (1) 10mm Nut Plate into the large square opening in the floor panel, (Figures 5 & 6). Line up the threaded nut with the small hole in line with the tab on the Bracket, (Figure 7). Bolt the Bracket to the Nut Plate with (1) 10mm x 35mm Hex Bolt, (1) 10mm Lock Washer and (1) 10mm Flat Washer, (Figure 9). Hand tighten at this time only. Repeat as required for the remaining brackets.
- b) **Vehicles with factory 8mm threaded hole in floor panel:** Bolt the top tab on the Bracket to the threaded hole in the floor panel with (1) 8mm x 30mm Hex Bolt, (1) 8mm Lock Washer and (1) 8mm Flat Washer, (Figures 8 & 9). Hand tighten at this time only. Repeat as required for the remaining brackets.

STEP 8- Once the step is fully installed, adjust and align the Step to the side of the vehicle, (Figures 10—12). Tighten the (3) 8mm hex bolts in the pinch weld first, then move to the (3) hex bolts attaching the top tab to the bottom of the channel. Torque all 10mm hardware to 20ft-lbs, 8mm hardware to 16ft-lbs.

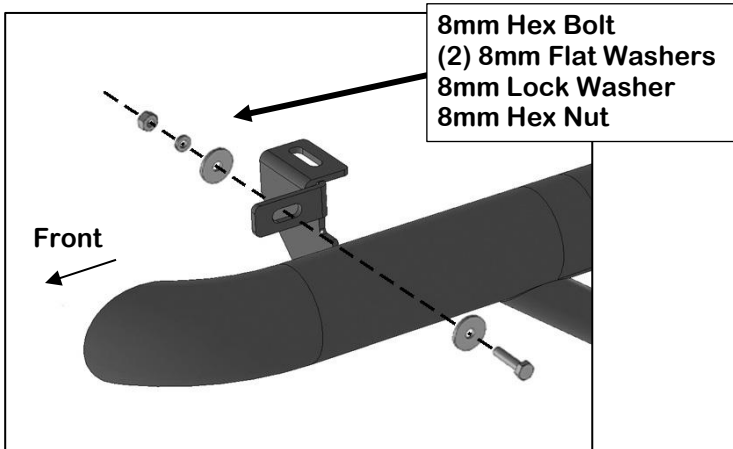
STEP 9- Repeat Steps 1—8 to install the passenger side RX7 Step assembly.



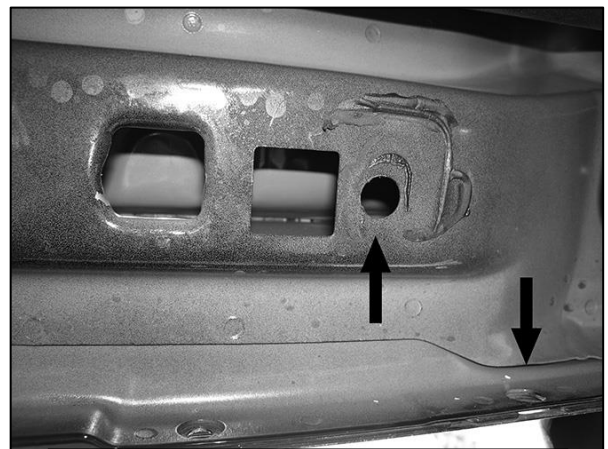
(Figure 1) Driver side front mounting location pictured (later model w/threaded insert)



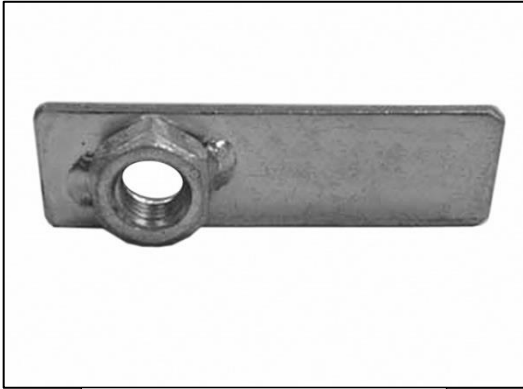
(Figure 2) Remove any sealing tape or sealant covering mounting holes



(Figure 3) Attach the Step to the forward holes in the pinch weld



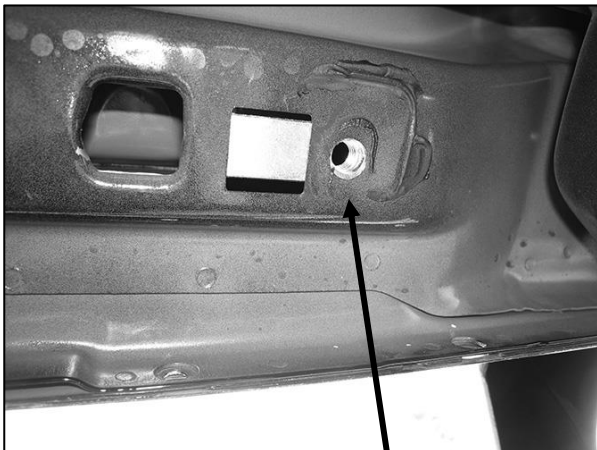
(Figure 4) Example of driver side front with "open channel" pictured



(Figure 5) 10mm Nut Plate



(Figure 6) Slide Nut Plate into channel



(Figure 7) Line up Nut Plate with factory hole



(Figure 8) Closed floor channel with factory 8mm threaded hole

10mm Nut Plate
Use with "open"
floor channel only

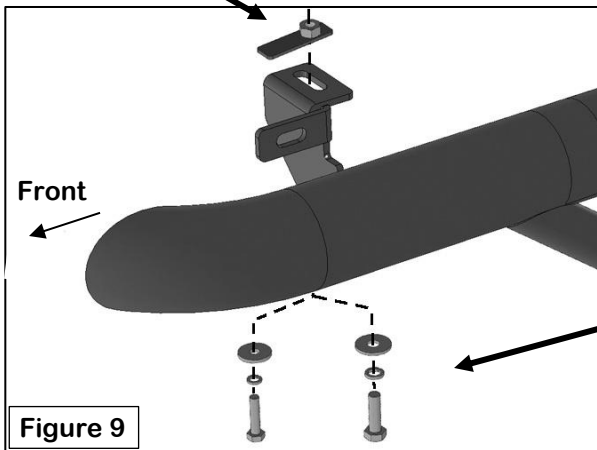
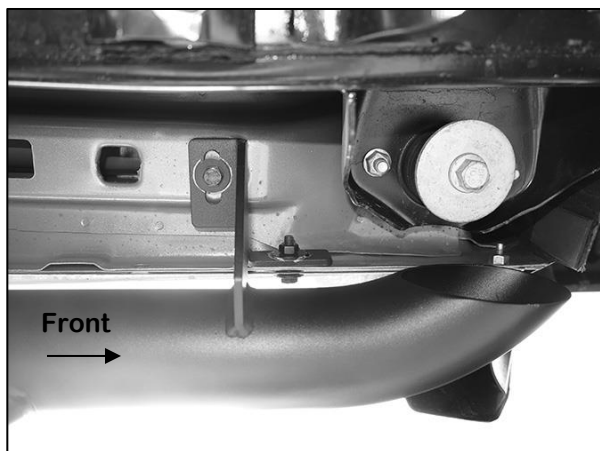


Figure 9

Models with threaded hole use:
8mm Hex Bolt
8mm Lock Washer
8mm Flat Washer

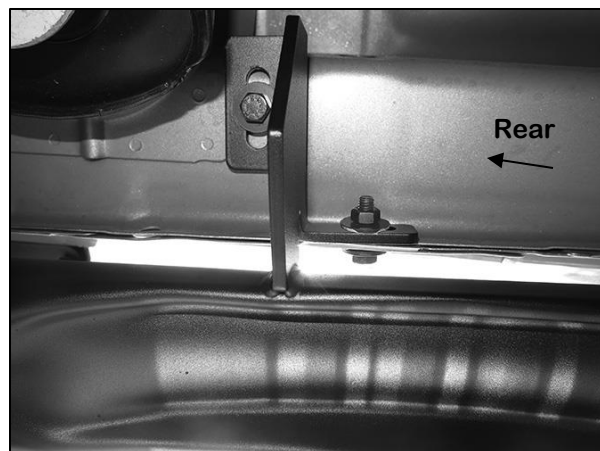
Models with "open" channel use:
10mm Hex Bolt
10mm Lock Washer
10mm Flat Washer



(Figure 10) Driver/left front installation



(Figure 11) Driver/left center installation



(Figure 12) Driver/left rear installation

