



Rusty's Off-Road Products
7161 Steele Station Road
Rainbow City, AL 35906
1-256-442-0607
www.rustysoffroad.com

Rusty's Adjustable Front HD Track Bar RC-TB225-UV INSTALLATION INSTRUCTIONS

Last Revised: 1/10/2017

Introduction:

Rusty's recommends that this installation be performed by a certified automotive technician or a person with professional mechanical knowledge. Installing this kit without this expertise may jeopardize the handling and safety of the vehicle.

Read instructions several times before starting. Be sure you have all the needed parts and know where they install. Read each step completely as you go. Exhaust modifications may be necessary. Prior to drilling or cutting, check behind the surface being worked on for any wires, lines, or hoses that could be damaged. After any drilling or cutting, remove burrs and grind smooth any surfaces. An inclinometer or similar tool may be needed to measure driveshaft angles before and after the installation.

Warning:

- It is the owners' responsibility to inspect all Rusty's products for proper torque specs to prevent loosening of components.
- Seat belts and shoulder harnesses should be worn at all times.
- Re-check all bolts and nuts after the first 100 miles and after any off-road usage during the first 300 miles.
- Although all of our products are made from the highest quality materials possible, they are not a substitute for Safe and Careful driving. In other words, have good safe on-road / off-road sense. Know the terrain, the speed limitations, and any obstacles that may lie ahead. Please remember to preserve our right to enjoy public land through the proper use of off-road vehicles.

Before Starting Installation:

1. Carefully Read all warnings and instructions completely before beginning.
2. Verify all parts have been received in this kit by checking the parts list on page#2 of this document.
3. Only install this kit on the vehicle for which it is specified.
4. Park the vehicle on a clean, dry, flat, level surface and block the tires so the vehicle cannot roll in either direction.
5. Be certain the vehicle is safely secured on jack stands or a vehicle lift prior to working around or under a vehicle. Never rely on a jack alone to support a vehicle's weight; use appropriately rated stands to support the vehicle's frame and any other heavy components.



Rusty's Off-Road Products
7161 Steele Station Road
Rainbow City, AL 35906
1-256-442-0607
www.rustysoffroad.com

Important Fitment Note: The RC-TB225-UV Rusty's Adjustable Front Track Bar is designed to be installed with the following Rusty's HD Frame Mount: **RC-TB160-UV** (XJ,ZJ).

Parts List:

Note: Please be sure that you have all the provided parts listed below before continuing with the installation.

<u>Part #</u>	<u>DESCRIPTION:</u>	<u>Quantity</u>
RC-TB225-UV	Rusty's Adjustable Front HD Track Bar (5-8" Lift) (XJ,ZJ)	1
SI-200	Rusty's Adjustable Track Bar 22mm Loop End (Pre-installed) (Contents Below)	1
RS-JN22M-L	Rusty's Jam Nut - 22mm - Left Hand Thread (Qty:1)	
03244860	1/4"-28 Thread Straight Head Standard Grease Fitting (Qty:1)	
MO20769-UV	Track Bar Replacement Bushing (MO20769) (Contents Below)	
MO20769-H	MO20769 Bushing Half (Qty:2)	
MO20769-12S	1/2" I.D. x 3/4" O.D. x 1-5/8" Length Bushing Sleeve (Qty:1)	
MO2327	Track Bar Replacement Bushings (MO2327) (Pre-installed) (Contents Below)	1
MO2327-H	MO2327 Bushing Half (Qty:2)	
MO2327-10S	10mm I.D. x 5/8" O.D. x 1-5/8" Length Bushing Sleeve (Qty:1)	





Rusty's Off-Road Products
7161 Steele Station Road
Rainbow City, AL 35906
1-256-442-0607
www.rustysoffroad.com

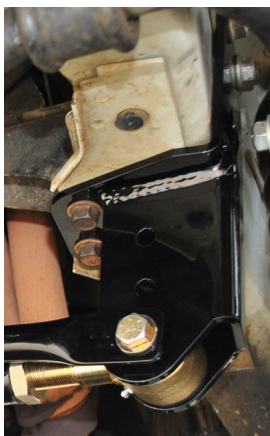
Installation Instructions

Note: Save all factory components and hardware for reuse, unless noted.

1. Park the vehicle on a level work surface with wheels in a straight forward position.
2. Position the vehicle into park and set the emergency brake as well as choke the wheels to prevent any movement. (**Note:** The installation will be preformed with the vehicle on the ground at ride height.)
3. Remove the cotter pin and castle nut securing the factory track bar to the frame bracket.
4. Remove the bolt and nut securing the factory track bar to the axle mount.
5. Remove the tie rod end with a puller (or pickle fork) and remove the factory track bar from the vehicle.
6. Remove the two nuts using a 18mm socket on the out side of the frame rail on the driver's side of the vehicle shown in the image below. (**Note:** Retain the hardware it will be reused.)



7. Remove the two bolts with a 15mm wrench positioned on the bottom side of the frame rail on the driver's side of the vehicle shown in the image below. (**Note:** Retain the hardware it will be reused.)



8. Remove the factory track bar mount from the vehicle and discard.
9. Clean the frame of any dirt and grease before continuing.



Rusty's Off-Road Products
7161 Steele Station Road
Rainbow City, AL 35906
1-256-442-0607
www.rustysoffroad.com

Installation Instructions (Continued)

10. Mount the new Rusty's HD Frame Mount in place on the two studs on the outside of the frame rail. Use the original hardware removed in step 6 to fasten in to position. **(Note:** Do not tighten)
11. Rotate the frame mount so that the two lower track bar frame mounting holes line up with the two holes in the bottom of the new track bar frame mounting bracket so that you may start the two bolts removed in step 7. **(Note:** This will be very tight fitting and may require a drift or a punch to pry into place.)
12. Add a drop of thread-locking compound to the factory hardware used in steps# 10 & 11 and tighten. (Torque Specs: 105 ft. lbs.)
13. Before bolting the track bar to the frame mount, you will need to center the body over the axle. Look at the front of the vehicle to see if the axle is centered. If not unlock the steering wheel. Turn the steering wheel in order to shift the body over the axle until centered. Once centered lock the steering wheel and adjust the adjustable end of the track-bar to the proper length. Fasten to the frame mount using the supplied 1/2" Grade 8 Hardware. (Torque spec: 85 ft. lbs.)
14. Verify that the body is centered over the axle and that the track bar is adjusted correctly by taking measurements. This can be done several ways. We recommend measuring from the frame rails to the ball joints on opposing sides (i.e. driver side frame rail to passenger side ball joint, passenger frame rail to driver ball joint). Adjust the length of the track bar as necessary until the measurements are equal.
15. Once adjusted to the correct length, add a drop of thread-locking compound to the jam nut and tighten (Torque Specs: 55 ft. lbs.)
16. After the track bar is adjusted to the correct length and all hardware has been tighten, it is a good idea to make sure there are enough threads in the track bar. The tie rod end has approximately 2.5" of threads and at least one inch of threads needs to be screwed into the bar, so measure the amount of threads outside the jam nut, the amount of threads showing should not exceed 1.50 inches.
17. Installation Completed!

WARNING

It is the owners' responsibility to inspect all Rusty's products for proper torque specs to prevent loosening of components. Seat belts and shoulder harnesses should be worn at all times. Re-check all bolts and nuts after the first 300 miles and after any off-road usage during the first 300 miles. Although all of our products are made from the highest quality materials possible, they are not a substitute for Safe and Careful driving. In other words, have good safe on-road / off-road sense. Know the terrain, the speed limitations, and any obstacles that may lie ahead. Please remember to preserve our right to enjoy public land through the proper use of off-road vehicles. Thank you for choosing Rusty's Off Road Products.