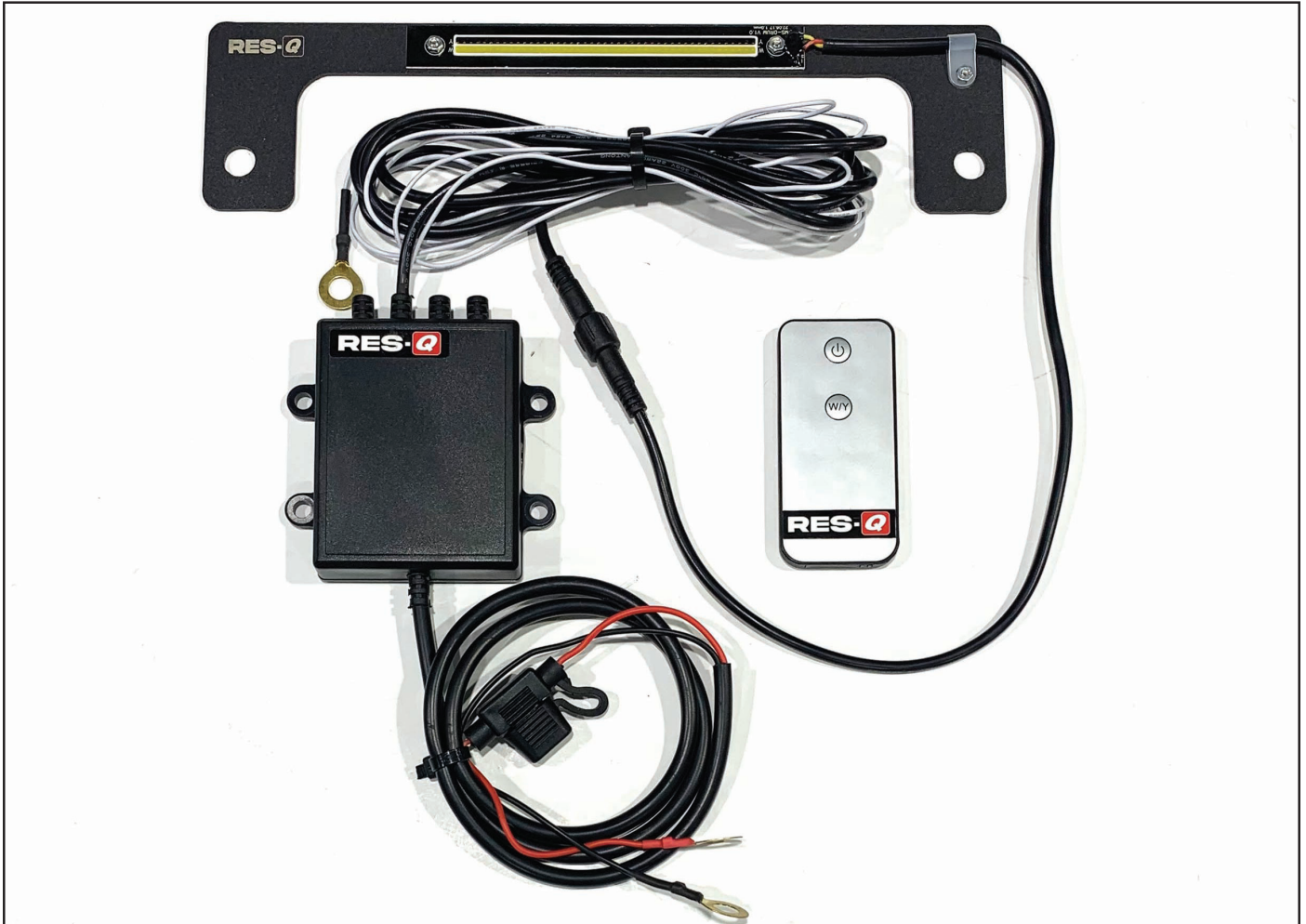




# Premium Fairlead Light Bracket Kit

Instruction Manual: #92128-9010



## KIT CONTENT LIST:

Fairlead Light Bracket (x1)  
Remote Control (x1)

## TOOLS REQUIRED:

Safety Glasses  
Ratchet  
13mm Socket  
15mm Socket  
15mm Wrench

## A FEW WORDS ABOUT PRODUCT SAFETY:

Your Res-Q Premium Fairlead Light Bracket Kit is intended to enhance the utility and enjoyment of your off-road capable vehicle. Follow safety information and installation recommendations. Throughout these instructions is important safety information that is generally preceded by one of three signal words indicating the relative risk of injury, property damage or adverse consequence.

The signal words mean:

### **! WARNING !**

A HAZARDOUS SITUATION WHICH, IF NOT AVOIDED, COULD RESULT IN DEATH OR SERIOUS INJURY. YOU CAN BE KILLED OR SERIOUSLY HURT IF YOU DON'T FOLLOW INSTRUCTIONS.

### **! CAUTION !**

A HAZARDOUS SITUATION WHICH, IF NOT AVOIDED, COULD RESULT IN A MINOR OR MODERATE INJURY. YOU CAN BE MODERATELY HURT AND ALSO MAY SUFFER PROPERTY DAMAGE IF YOU DON'T FOLLOW INSTRUCTIONS.

### **NOTICE**

CAREFUL ATTENTION IS REQUIRED TO THIS INSTRUCTION OR OPERATION BUT DOES GENERALLY NOT RELATE TO PERSONAL INJURY. DAMAGE TO YOUR RES-Q PRODUCT OR OTHER PROPERTY MAY RESULT IF YOU DON'T FOLLOW INSTRUCTIONS.

## BEFORE YOU BEGIN USAGE:

Congratulations on your purchase of the Res-Q Premium Fairlead Light Bracket Kit. When unpacking, check to make sure all parts are included and not damaged due to shipping. If any part is missing or broken, please call Customer Service at 800-745-6037 as soon as possible. Thank you again for your purchase.

### **! CAUTION !**

READ ALL SAFETY MESSAGES AND ALWAYS WEAR SAFETY GLASSES WHEN WORKING WITH TOOLS.

### **! WARNING !**

TO REDUCE RISK OF ELECTRICAL SHOCK OR ELECTROCUTION, DO NOT DISASSEMBLE OR ATTEMPT REPAIRS OR MODIFICATIONS.

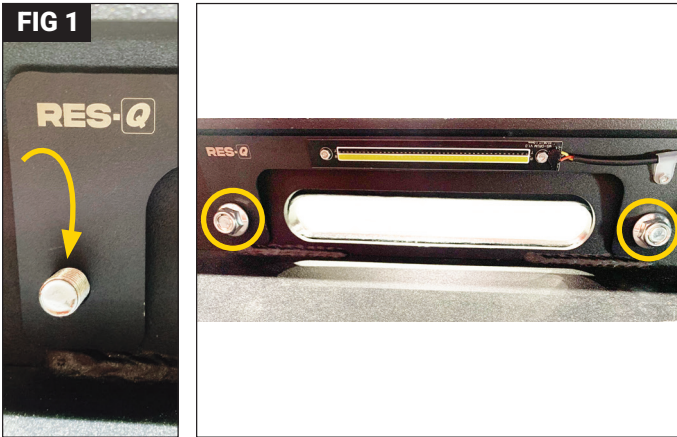
### **NOTICE**

TO REDUCE RISK OF SERIOUS INJURY OR PROPERTY DAMAGE:  
READ ALL SAFETY MESSAGES AND UNDERSTAND ALL INSTRUCTIONS AND PROCEDURE NOTICES BEFORE ATTEMPTING TO INSTALL OR USE THIS PRODUCT.

### **NOTICE**

RISK OF EYE INJURY! SAFETY GLASSES MUST BE WORN AT ALL TIMES WHILE INSTALLING OR MAINTAINING THIS PRODUCT. DO NOT USE IF DAMAGED.

## INSTALLATION - STEP 1



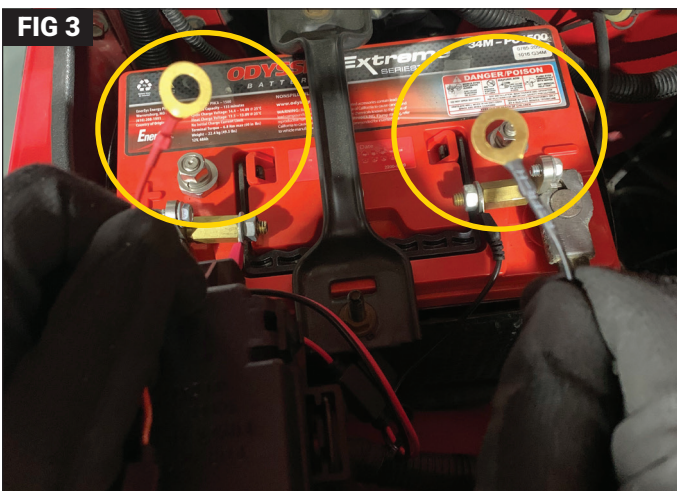
Put on safety glasses. Remove the two bolts securing your fairlead. Place the light bracket on the inside of the bumper fairlead mounting flange. Thread and tighten the two bolts securing your fairlead attaching the fairlead light between the bumper and winch. (FIG 1) Begin to plan your wiring route, keep in mind the white wire is the winch signal wire and it will need to be attached to the winch at a latter step. At this time, connect the weather resistant connector in line with the fairlead light to the control module making sure to tighten the screw connector.

## STEP 2

Run your fairlead wires under your vehicle and up through the opening following your winch cables. The white wire will need to be attached to one of the terminals of the winch motor. Next, secure the Res-Q Fairlead Light Control Module in a safe location under the hood of the vehicle away from any hot engine components. Using wire ties, place the extra wiring where it is easy to bundle together for your vehicle. (FIG 2)

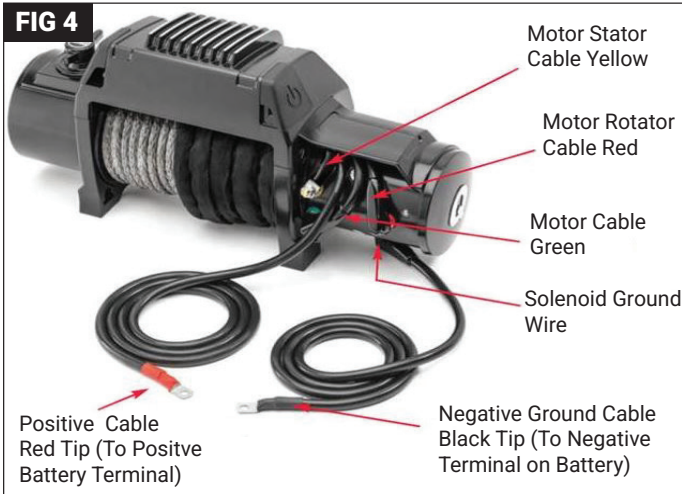


## STEP 3



Locate your positive and negative fairlead wires. Connect the positive and negative wires directly to your positive and negative battery terminals. (FIG 3) **NOTE:** After the positive and negative connectors are connected to the battery the fairlead light will illuminate. After this step the Res-Q fairlead light bracket can be turned "On" and "Off" with the remote control included in the kit. Additionally, the remote will be used to change the color from "White" to "Amber" color.

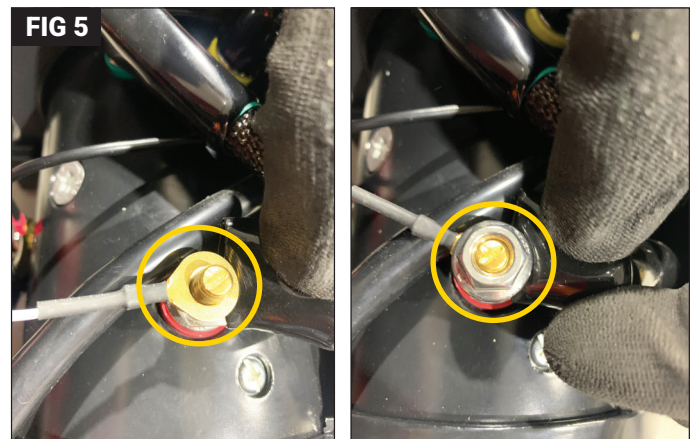
## STEP 4 - WIRING YOUR WINCH SIGNAL WIRE



After securing the Res-Q Fairlead Light Control Module, continue to follow the "WHITE" trigger wire back to the winch motor area. The module is equipped to automatically turn on the LED Fairlead Light when the winch is activated. The trigger wire is to be connected to the "Motor Rotator Cable RED" located on the back side of the winch's motor. (FIG 4)

## STEP 5

Loosen the Motor Rotator Cable Terminal with the correct size hex wrench and attach the white trigger wire terminal to the winch's motor terminal. Rethread and tighten the Motor Rotator Terminal nut. Further consult your winch's manufacture wiring diagram to confirm the Motor Rotator Terminal on the back side of your winch. (FIG 5)



## STEP 6 - REMOTE FUNCTION AND WINCH TRIGGER WIRE



Once the trigger wire is connected to your winch, turn your winch "ON" and with the winch in free spool action the "In" or "Out" function of the winch to ensure the trigger wire functions properly. (FIG 6)

## STEP 7 - REMOTE FUNCTION AND WINCH TRIGGER WIRE CONT.



The Res-Q fairlead light will turn on for 15 seconds after the winch trigger wire is charged with 12v. The Fairlead light will illuminate with the last color that the module turned off with. The color can be changed by turning on the Res-Q Fairlead light with the remote and changing the color. Then turning off the fairlead light will save the alternate color as the trigger wire illumination color. (FIG 7 & FIG 8) Installation is now complete.

## NOTES:

# Res-Q Exclusive Three Year Limited Warranty

Your Res-Q branded accessories are covered by the following Limited Warranty provided exclusively by Res-Q, 1028 Saunders Lane, West Chester PA 19380.

This **Limited Warranty** is the only warranty made in connection with your purchase. Res-Q neither assumes nor authorizes any vendor, retailer or other person or entity to assume for it any other obligation or liability in connection with this product or Limited Warranty. This Limited Warranty does not apply and is not cumulative to any accessory or part distributed by Res-Q for which the Manufacturer provides a separate written warranty.

## **What is Covered:**

Subject to the terms, exclusions and limitations herein and with respect only to Res-Q branded accessories first sold in the United States, Res-Q warrants to the initial retail purchaser only that your Res-Q accessory shall be free of defects in material and workmanship: for a period of three (3) years from date of retail purchase.

This **Limited Warranty** is not assignable and shall terminate upon sale of the vehicle upon which the Res-Q accessory is installed or other transfer to third persons.

All other warranties are hereby disclaimed, except to the extent prohibited by applicable law in which case any implied warranty of merchantability or fitness for a particular purpose on this product is limited to three (3) years from date of initial retail sale. Res-Q reserves the rights to: **(a.) require invoice or other proof your accessory is within the terms of this Limited Warranty as a condition of warranty service and, (b.) make future revisions to this product and Limited Warranty without prior notice or obligation to upgrade your product.**

## **What is Not Covered:**

Your Res-Q Limited Warranty does not cover products or parts Res-Q determines to have been damaged by or subjected to: **(a.) installation damage, alteration, modification, combination with other parts, failure to maintain or improper repair or service, (b.) normal wear & tear, cosmetic damage or damage from moisture or water immersion, (c.) Acts of God, accidents, misuse, negligence, inadequate mounting or impact with vehicle(s), obstacles or other aspects of the environment, (d.) theft, vandalism or other intentional damage.**

## **Remedy Limited to Repair/Replacement:**

The exclusive remedy provided hereunder shall, upon Res-Q inspection and at our option, be either repair or replacement of product or parts (new or refurbished) covered under this Limited Warranty. Customers requesting warranty consideration should first contact Res-Q to obtain a RGA number (610-701-3336). All labor, removal, shipping and installation costs are customer's responsibility.

## **Other Limitations - Exclusion of Damages - Your Rights Under State Law:**

In consideration of the purchase price paid, neither Res-Q nor any independent Res-Q distributor/licensee are responsible for any time loss, rental costs, or for any incidental, consequential, punitive or other damages you may have or incur in connection with any part or product purchased. Your exclusive remedy hereunder for covered parts is repair/replacement as described above.

This **Limited Warranty** gives you specific rights. You may also have other rights that vary from state to state. For example, some states do not allow limitations of how long an implied warranty lasts and /or do not allow the exclusion or limitation of incidental or consequential damages, so the limitations and exclusions herein may not apply to you.

©Res-Q, 2023. All Rights Reserved.  
A4 Version 3/30/2023

**Instructions Part #12999.3306**

