



**ROCK HARD 4X4 JEEP WRANGLER JK 2/4-DOOR
2007-2017 FRONT BUMPER (ALL)
PART #: RH-5001-B / 5002 / 5003 / 5004 / 5005 / 5006 /
5007 / 5008 / 5009 / 5041 / 5042 / 5045 / 5046
Installation Manual**



INSTALLATION VIDEO AVAILABLE



PLEASE VISIT [YOUTUBE.COM/C/ROCKHARD4X4](https://www.youtube.com/c/RockHard4x4)

Customer Service / Tech Support: sales@rockhard4x4.com
Thank you for your purchase! Please read all instructions carefully prior to
beginning installation of your Rock Hard 4x4 product.

PACKING LIST:

- 1 - FRONT BUMPER**
- 8 - 1/2" X 3" BUTTON HEAD BOLTS**
- 8 - 1" X 1 3/8" SPACERS**
- 8 - 1/2" WASHERS**
- 8 - NYLOCK NUTS**
- 8 - 10 X 3/4" SELF DRILLING SCREWS**
- 1 - 1/2" THIN NUT BOLT FOR ZEON INSTALL**
- 1 - 1/2" X 2-3/4" BUTTON HEAD BOLT FOR ZEON INSTALL**
- 2 - 2" X 2" PLASTIC PLUGS**

ALUMINUM FRONT BUMPER ONLY:

- 2 - LONG RECTANGULAR PLATES (HOLES EACH END)**

REQUIRED TOOLS:

- WIRE OR ZIP TIE SNIPS**
- 3/4" SOCKET AND WRENCH**
- 3" SOCKET WRENCH EXTENSION**
- 5/16" OR 8MM ALLEN WRENCH**
- 5/16" OR 8MM SOCKET**
- PHILLIPS SCREWDRIVER**

Thank you for your purchase! Whether you bought this Rock Hard 4x4 product from one of our fantastic dealers or our factory direct team, we thank you for your business.

Rock Hard 4x4 is a family owned and operated business. We are headquartered in Saint Paul, Nebraska where we design, fabricate, and produce every single one of our products. Every single part we manufacture is 100% Made in the USA and exclusively in house by the Rock Hard 4x4 team.

We outsource zero processes.

To you, that means the product you are installing is the highest quality and longest lasting component on the market.

To us, that means you've selected a part we've spent years developing. Each Rock Hard 4x4 part has gone through more research and development and evolution than most people realize. While our parts may have the same striking look year after year, subtle revisions and refinements we implement maintain their status as the most durable and easy to install on the market.

We invite you to send us your feedback! Please email, call, write, or catch us on an off road trail near you to share your tales, share comments, and ask questions.

Phone: 844-762-5427

Fax: 308-754-5201

Email: sales@rockhard4x4.com

Site: www.rockhard4x4.com

Mail: ROCK HARD 4X4

PO BOX 186

Saint Paul, NE 68873

Customer Service / Tech Support: sales@rockhard4x4.com

Thank you for your purchase! Please read all instructions carefully prior to beginning installation of your Rock Hard 4x4 product.

NOTE: All lowered winch plate JK front bumpers have a predesigned allowance for side and center spool winches. This fairlead cutout may visually appear off center, but is the safe average that allows for all popular winches.

REMOVING FACTORY FRONT BUMPER

1. Remove upper valence by unscrewing two plastic body plugs. Sometimes it's easier to simply drill them out. Discard – will not be reused.
2. Remove lower air dam by unclipping 4 plastic body plugs along front of bumper and 2 along back of air dam. Discard – will not be reused.
3. Use a 18MM socket and 3” extension to remove 8 nuts on back of front bumper. 4 per frame cap.
4. Unclip factory fog lights harness from passenger side frame rail (if equipped).
5. Slide factory front bumper off frame rails to expose remaining factory fog light wiring harness clips. Use wire cutters to cut zip ties, do not cut fog light wires.
6. Unclip factory fog lights from housings.
7. Remove front bumper from vehicle.
8. If reusing factory fog lights, use Phillips screwdriver to unscrew 4 screws per light housing (if equipped).

Customer Service / Tech Support: sales@rockhard4x4.com
Thank you for your purchase! Please read all instructions carefully prior to beginning installation of your Rock Hard 4x4 product.

INSTALLING ROCK HARD 4X4 FRONT BUMPER

1. Install OEM fog lights into front bumper (if applicable) using 5/16" or 8MM and supplied zip screws. 4 per light into Rock Hard 4x4 front bumper fog light housing.

PRO TIP: You may need to trim a small corner off factory fog light mounting tabs to fit inside bumper. This can be done with a file, hack saw, or small blade. OEM HARD ROCK EDITION and 10" Anniversary Steel Front bumper fog lights not compatible. If your aftermarket fog lights do not sit perfectly horizontal, you can redrill new holes.

IF INSTALLING A LOWERED WINCH MOUNT FRONT BUMPER ON A 2012 OR NEWER WRANGLER, RELOCATE FACTORY VACUUM PUMP AT THIS TIME USING ROCK HARD 4X4 PART RH-5011 (sold separately).

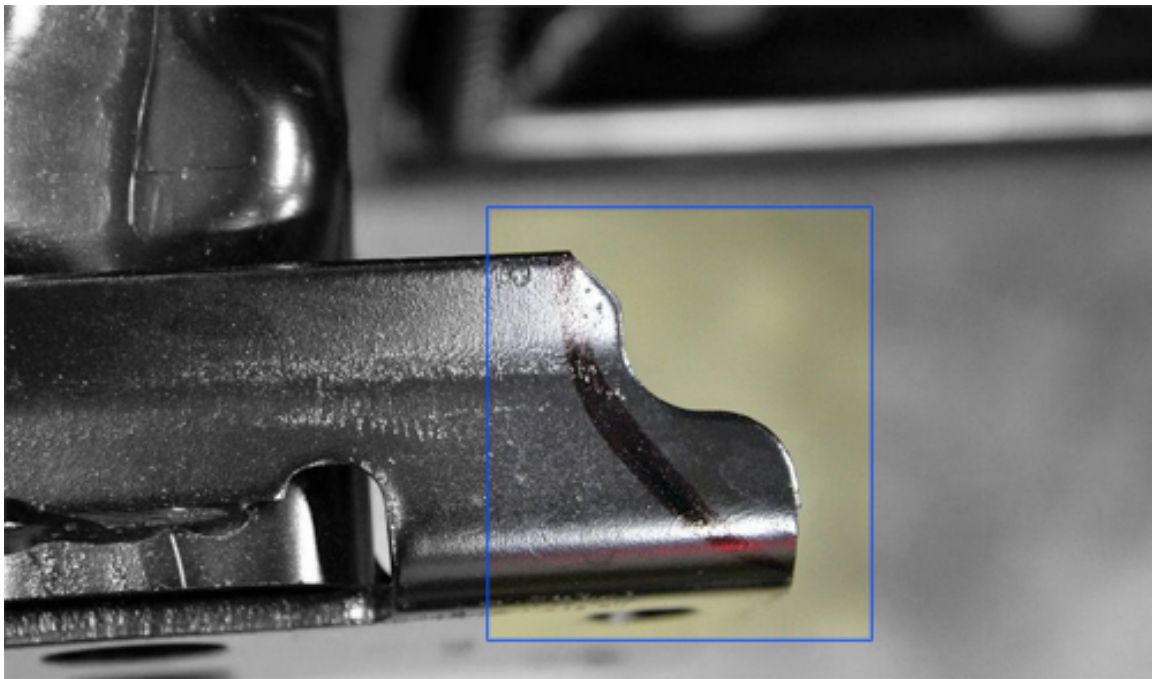
2. Slide new Rock Hard 4x4 front bumper onto frame. Leave approximately 2" between end of frame caps and inside of front bumper.
3. Use eight 1" x 1 3/8" long spacers between front end of frame and new bumper.
PRO TIP: All winches, except for some imports, will use long spacers between Jeep frame and nut. Some import winches have wires that come directly out of back of winch and would normally hit grille. In this case, use short spacers plus long spacers to provide enough room to run wire between grille and bumper.
4. Install eight 1/2" x 3" button head bolts from front of bumper through spacers and into frame. Use a 3/4" socket on back of nut, 5/16" or 8MM allen for bolt head.

Customer Service / Tech Support: sales@rockhard4x4.com

Thank you for your purchase! Please read all instructions carefully prior to beginning installation of your Rock Hard 4x4 product.

PRO TIP: If installing Rock Hard 4x4 tow bar brackets, install at this time with supplied hardware in tow bar bracket kit. Tow bar bracket kits sold separately. Learn more at www.rockhard4x4.com/towing

PRO TIP: If installing a Warn ZEON winch, use one ½" x 2 ¾" button head and one ½" thin nylock nut on top inner driver side frame mount for winch clearance. You may have to grind upper frame horn for winch clearance - trim away the driver side, upper flap of the frame horn, inside half. You do NOT trim away the face of your frame horn where your hardware mounts, just the peeled back steel. See photo below:



5. Install eight ½" washers and eight nylock nuts on inside of bumper.
6. Reroute wiring harness to fog lights and reconnect fog lights to harness.

Customer Service / Tech Support: sales@rockhard4x4.com
Thank you for your purchase! Please read all instructions carefully prior to beginning installation of your Rock Hard 4x4 product.

WINCH INSTALL TIPS:

- A. Install winch using supplied bolts and hardware.
- B. If installing a winch into a Rock Hard 4x4 aluminum front bumper, use supplied two long rectangular washers for bottom side of winch plate for added strength.
- C. You may notice your fairlead is not perfectly centered on the front bumper. This is because of the two popular winch styles – center spool and side spool. Our fairlead is the safe average between those two styles.

CONGRATULATIONS! Now go wheel your rig with a whole new level of confidence and capability.

Please send photos of your install and wheeling adventures to pics@rockhard4x4.com. We love seeing our products on the trail!

Customer Service / Tech Support: sales@rockhard4x4.com
Thank you for your purchase! Please read all instructions carefully prior to beginning installation of your Rock Hard 4x4 product.

Rock Hard 4x4 Exclusive Limited Lifetime Warranty

Your Rock Hard 4x4® branded accessories are covered by the following Limited Warranty provided exclusively by Rock Hard 4x4., 1005 Twin Forks Lane, St. Paul, NE 68873.

This Limited Warranty is the only warranty made in connection with your purchase. Rock Hard 4x4 neither assumes nor authorizes any vendor, retailer or other person or entity to assume for it any other obligation or liability in connection with this product or Limited Warranty.

What is Covered: Subject to the terms, exclusions and limitations herein and with respect only to Rock Hard 4x4 branded accessories first sold in the United States, Rock Hard 4x4 warrants to the initial retail purchaser only that your Rock Hard 4x4 accessory shall be free of defects in material and workmanship for the lifetime of this product.

Rock Hard 4x4 reserves the rights to: (a.) require invoice or other proof your accessory is within the terms of this Limited Warranty as a condition of warranty service and, (b.) make future revisions to this product and Limited Warranty without prior notice or obligation to upgrade your product.

What is Not Covered: *Your Rock Hard 4x4 Limited Warranty does not cover products or parts Rock Hard 4x4 determines to have been damaged by or subjected to:*

(a.) Installation damage, alteration, modification, combination with other parts, failure to maintain or improper repair or service, (b.) normal wear & tear, cosmetic damage or damage from moisture or water immersion, (c.) Acts of God, accidents, misuse, negligence, inadequate mounting or impact with vehicle(s), obstacles or other aspects of the environment, (d.) theft, vandalism or other intentional damage. (e.) powder coat, anodizing, or paint finish.

Remedy Limited to Repair/Replacement: *The exclusive remedy provided hereunder shall, upon Rock Hard 4x4 inspection and at Rock Hard 4x4's option, be either repair or replacement of product or parts (new or refurbished) covered under this Limited Warranty. Customers requesting warranty consideration should first contact Rock Hard 4x4 to obtain a RGA number (308-750-4690). All labor, removal, shipping and installation costs are customer's responsibility.*

Your Rights Under State Law: *In consideration of the purchase price paid, neither Rock Hard 4x4 nor any independent Rock Hard 4x4 distributor/licensee are responsible for any time loss, rental costs, or for any incidental, consequential, punitive or other damages you may have or incur in connection with any part or product purchased.*

Customer Service / Tech Support: sales@rockhard4x4.com

Thank you for your purchase! Please read all instructions carefully prior to beginning installation of your Rock Hard 4x4 product.