



JEEP JK 20" LED Grille Mount

Thank you for choosing Rough Country for all your suspension needs.

▲ NOTICE

Please read instructions before beginning installation. Check the kit hardware against the kit contents shown below. Be sure you have all needed parts and know where they go.

KIT CONTENTS

- 20" LED LIGHT GRILLE MOUNT (2)
- 1/4" x 1" Bolts (5)
- 1/4" Flat Washer (6)
- 1/4" Riv Nut (4)
- 5/16" Nut (1)



TOOLS NEEDED

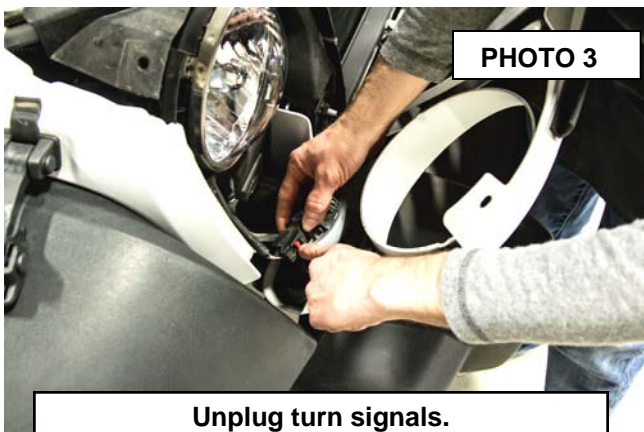
- 7/16 Wrench
- 1/2 Wrench
- Flat Screwdriver
- Pliers
- Drill
- 25/64 Drill Bit

INSTALLATION INSTRUCTIONS

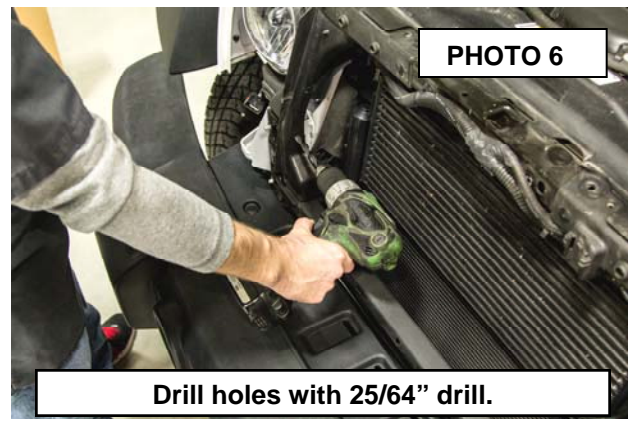
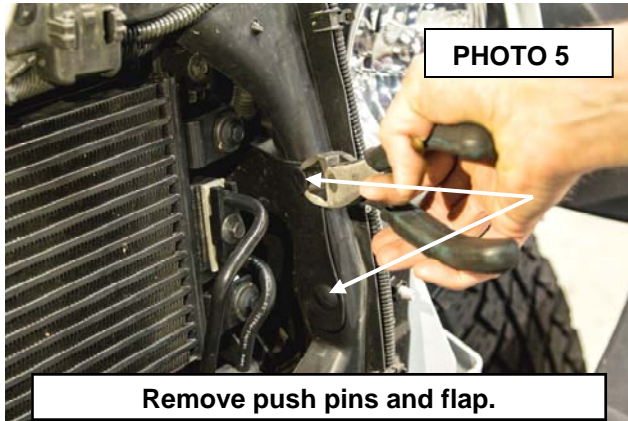
1. Open the hood and locate the (6) push pins from the top of the grille. **See Photo 1.**
2. Using a screwdriver, remove the push pins and retain for reuse. **See Photo 2.**



3. Unplug the turn signals from the rear of the grille. **See Photo 3.**
4. Carefully pull the lower part of the grille away from the Jeep to release the clips. **See Photo 4.**



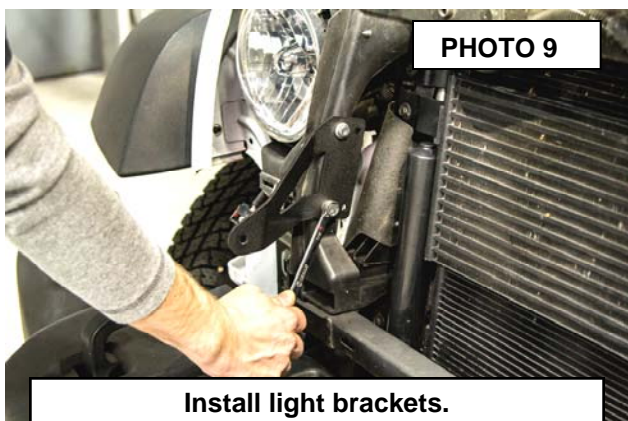
5. Using a pair of pliers, remove the (2 per side) push pins from the radiator support. **See Photo 5.**
6. Using a 25/64 drill, open up the existing (2) holes from where the push pins were removed in step 5. **See Photo 6.**



7. Insert rivnut into hole. **See Photo 7.**
8. Using a 1/4" x 1" bolt and the 5/16" nut, hold the 5/16" nut with a 1/2" wrench and tighten the 1/4" bolt with a 7/16" wrench until the rivnut is secure. **See Photo 8.**



9. Install the supplied light brackets using the forward most holes and the 1/4" by 1" hardware. Tighten using a 7/16" wrench. **See Photo 9.**
10. Push the push pins, along with the rubber flap, into the rear holes in the light bracket. **See Photo 10.**



11. Plug the turn signals back into the factory wiring harness. **See Photo 11.**
12. Carefully push grille back into place and secure with the (6) push pins in the top of the grille. **See Photo 12.**
13. In-

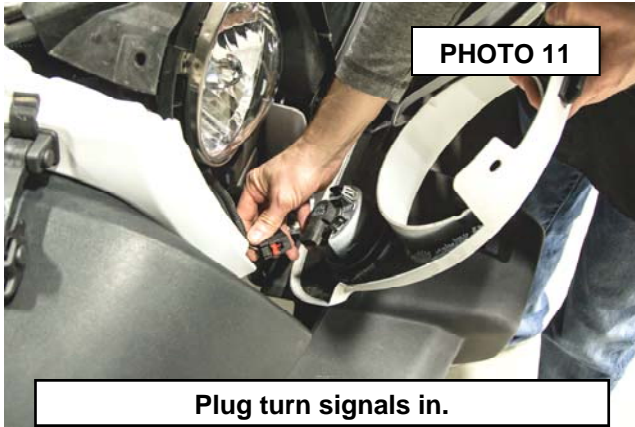


PHOTO 11

Plug turn signals in.

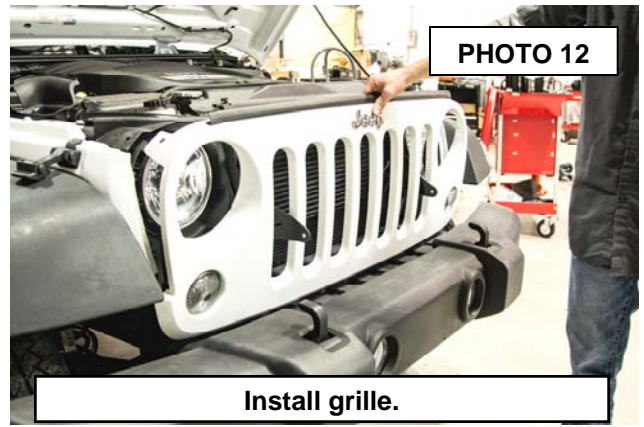


PHOTO 12

Install grille.

13. Install light into mounting brackets with hardware and Allen supplied with the Rough Country 20" Light. **See Photo 13.**
14. Wire light according to instructions included with the light.

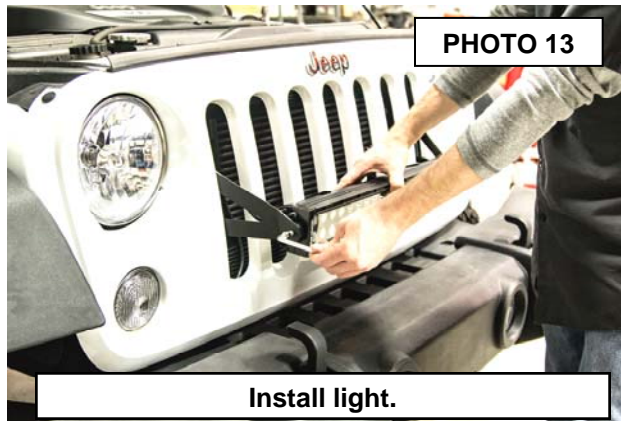


PHOTO 13

Install light.

15. **Notice Brackets may be mounted in the lower or upward position.**



Thank You for choosing Rough Country for your off road needs!!!

By purchasing any item sold by Rough Country, LLC, the buyer expressly warrants that he/she is in compliance with all applicable Federal, State, and Local laws and regulations regarding the purchase, ownership, and use of the item. It shall be the buyers responsibility to comply with all Federal, State and Local laws governing the sales of any items listed, illustrated or sold. The buyer expressly agrees to indemnify and hold harmless Rough Country, LLC for all claims resulting directly or indirectly from the purchase, ownership, or use of the items.



