



97-06 Jeep TJ Wrangler 4" Suspension Lift Installation Instructions

www.skyjacker.com

REQUIRED TOOL LIST:

- Safety Glasses
- Metric / Standard Wrenches & Sockets
- Drill / Assorted Drill Bits
- Floor Jack
- Jack Stands
- Measuring Tape
- Torque Wrench



Before beginning the installation, thoroughly & completely read these instructions & the enclosed driver's WARNING NOTICE. Affix the WARNING decal in the passenger compartment in clear view of all occupants. Please refer to the Parts List to insure that all parts & hardware are received prior to the disassembly of the vehicle. If any parts are found to be missing, contact SKYJACKER® Customer Service at 318-388-0816 to obtain the needed items. If you have any questions or reservations about installing this lift kit, contact SKYJACKER® Technical Assistance at 318-388-0816.

Make sure you park the vehicle on a level concrete or asphalt surface. Many times a vehicle is not level (side-to-side) from the factory & is usually not noticed until a lift kit has been installed, which makes the difference more visible. Using a measuring tape, measure the front & rear (both sides) from the ground up to the center of the fender opening above the axle. Record this information below for future reference.

Driver Side Front: _____

Passenger Side Front: _____

Driver Side Rear: _____

Passenger Side Rear: _____

IMPORTANT NOTES:

- This lift is determined from the amount of lift to the front of the vehicle, while only lifting the rear to a position level with the front.
- If larger tires (10% more than the stock diameter) are installed, speedometer recalibration will be necessary. Contact your local Jeep dealer or an authorized dealer for details.
- After installation a qualified alignment facility is required to align the vehicle to factory specifications.
- 6-speed transmission models may require additional modifications. The options are trimming of the console or bending of the shifter.
- On models outfitted with extra bolt-on equipment & accessories, SKYJACKER® offers new coil spring isolator pads made from polyurethane to increase the ride height 3/4", front or rear (Part # SIP275, pair).

Component Box Breakdown:

Part #: TJ401BPBLT / TJ401BPHLT / TJ401BPMLT / TJ401BPNLT / TJ403BPBLT / TJ403BPHLT / TJ403BPMLT / TJ403BPNLT

Item #	Description	Qty	Item #	Description	Qty
TJ40FS-DR	TJ FRONT DR/LT COIL SPRING	2	H7025	FRONT HYDRO SHOCK / RED BOOT	2
TJ40RS-DR	TJ REAR DR/LT COIL SPRING	2		(Included With TJ401BPHLT, TJ403BPHLT)	
TJLL24-L	TJ FRONT / REAR LOWER LINK	4	H7028	REAR HYDRO SHOCK / RED BOOT	2
TCL151	TJ T/CASE LOWERING KT (Included With TJ401BPBLT, TJ401BPHLT, TJ401BPMLT, TJ401BPNLT)	1		(Included With TJ401BPHLT, TJ403BPHLT)	
TCL153	TJ T/CASE LOWERING KT (Included With TJ403BPBLT, TJ403BPHLT, TJ403BPMLT, TJ403BPNLT)	1	M9525	M95 MONOTUBE SHOCK	2
				(Included With TJ401BPMLT, TJ403BPMLT)	
H-BOX TJ4013B	HDWR BOX: TJ401/403BPBLT	1	M9528	M95 MONOTUBE SHOCK	2
B8525	BLACK MAX SHK / BLACK BOOT (Included With TJ401BPBLT, TJ403BPBLT)	2		(Included With TJ401BPMLT, TJ403BPMLT)	
B8528	BLACK MAX SHK / BLACK BOOT (Included With TJ401BPBLT, TJ403BPBLT)	2	N8025	NITRO SHOCK / RED BOOT	2
				(Included With TJ401BPNLT, TJ403BPNLT)	
			N8028	NITRO SHOCK / RED BOOT	2
				(Included With TJ401BPNLT, TJ403BPNLT)	

Part # TCL151 (Included with TJ401BPBLT, TJ401BPHLT, TJ401BPMLT, TJ401BPNLT)

Item #	Description	Qty	Item #	Description	Qty
TCL15SX2012-R	TJ T/CASE LWR SQUARE TUBE	1	TCLTJ40	HDWR BAG: TCL151	1
TCL15SX2358-L	TJ T/CASE LWR SQUARE TUBE	1	I-TCLTJ	INST. SHEET: TCL151/153	1

Hardware Bag Breakdown:

Part # TCLTJ40 (Included with TJ401BPBLT, TJ401BPHLT, TJ401BPMLT, TJ401BPNLT)

Item #	Description	Qty	Item #	Description	Qty
12X3FSB	1/2 X 3 FLAT SOCKET BOLT	6	14FTN	1/4 FINE THREAD N/I LOCK NUT	2
TCL24-B	TRANS CASE LNKG RELOC BRK	1	14SAEW	1/4 SAE WASHER	2
14X1FTB	1/4 X 1 FINE THREAD BOLT	2	LT100	NUTS N' BOLTS 427 1 ML TUBE	1

Part # TCL153 (Included with TJ403BPBLT, TJ403BPHLT, TJ403BPMLT, TJ403BPNLT)

Item #	Description	Qty	Item #	Description	Qty
TCL15SX2234-1	TJ T/CASE LWR SQUARE TUBE	2	TCLTJ43	HDWR BAG: TCL153	1
TCL15SX2-1	TJ T/CASE LWR SQUARE TUBE	2	I-TCLTJ	INST. SHEET: TCL151/153	1

Hardware Bag Breakdown:

Part # TCLTJ43 (Included with TJ403BPBLT, TJ403BPHLT, TJ403BPMLT, TJ403BPNLT)

Item #	Description	Qty	Item #	Description	Qty
12MMX80B	12MM X 80MM METRIC BOLT	8	14FTN	1/4 FINE THREAD N/I LOCK NUT	2
12SAEW	1/2 SAE WASHER	8	14SAEW	1/4 SAE WASHER	2
TCL24-B	TRANS CASE LNKG RELOC BRK	1	LT100	NUTS N' BOLTS 427 1 ML TUBE	1
14X1FTB	1/4 X 1 FINE THREAD BOLT	2			

Hardware Box Breakdown:

Part # H-BOX TJ4013B

Item #	Description	Qty	Item #	Description	Qty
SBE401	TJ FRONT SWAY BAR END LKS	1	HB-BPS30	HDWR BAG: TJ BUMP STOP SPC	1
SBE500	TJ REAR SWAY BAR END LKS	1	JA750	TJ PITMAN ARM W/PWR STEER	1
TJRTB	TJ REAR TRACK BAR BRACKET	1	I-TJ4013B	INST SHEET: TJ401/TJ403BPLT	1

Part # SBE401

Item #	Description	Qty	Item #	Description	Qty
SBE401-L	TJ FRONT SWAY BAR END LINK	2	HB-SBENB01	HDWR BAG: SBE401	1

Hardware Bag Breakdown:

Part # HB-SBENB01

Item #	Description	Qty	Item #	Description	Qty
SBB2	TJ SWAY BAR U-BRACKET	2	12CTCLN	1/2 COARSE THRD LOCK NUT	2
141509	ES25 SLEEVE / 1.50 LONG	4	10MMN	10 MM METRIC N/I LOCK NUT	2
12X212CTBG5	1/2 X 2 1/2 COARSE THRD BOLT	2	38SAEW	3/8 SAE WASHER	2
10X35MMB	10MM X 35 METRIC BOLT	2	12SAEW	1/2 SAE WASHER	2

Part # SBE500

Item #	Description	Qty	Item #	Description	Qty
SBE500-L	TJ REAR SWAY BAR END LINK	2	HB-142118-4	HDWR BAG: SBE500	1

Hardware Bag Breakdown:

Part # HB-142118-4

Item #	Description	Qty
142118	ES34 SLEEVE / 1.66 LONG	4

Part # TJRTB

Item #	Description	Qty	Item #	Description	Qty
TJRTB-B	TJ REAR TRACK BAR BRACKET	1	HB-TJRTB	HDWR BAG: TJRTB	1

Hardware Bag Breakdown:

Part # HB-TJRTB

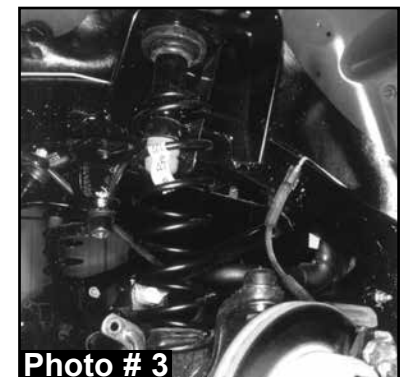
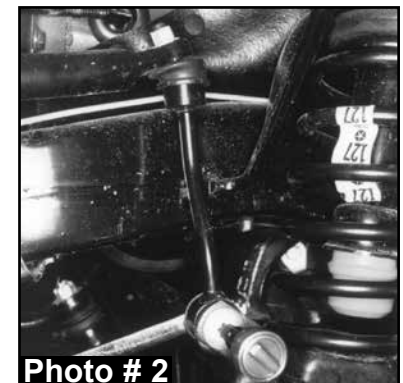
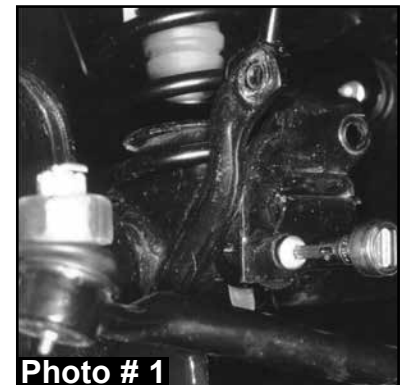
Item #	Description	Qty	Item #	Description	Qty
SSTJRTB	SPACER SLEEVE FOR TJRTB	1	12X112FTB	1/2 X 1 1/2 FINE THREAD BOLT	1
12X70MMB	12MM X 70MM METRIC BOLT	1	12FTN	1/2 FINE THREAD N/I LOCK NUT	1
12MMN	12MM METRIC N/I LOCK NUT	1	12SAEW	1/2 SAE WASHER	3

Part # HB-BPS30

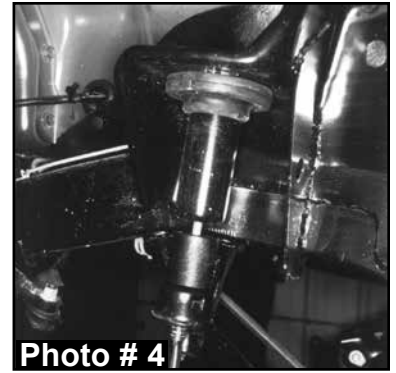
Item #	Description	Qty	Item #	Description	Qty
BPS30-B	TJ BUMP STOP SPACER	4	10MMX90MMB	10MM X 90MM METRIC BOLT	4

Front Installation:

1. Secure & properly block the tires of the vehicle on a level concrete or asphalt surface.
2. Jack up the front of the vehicle & install jack stands under the frame behind the lower link rear brackets.
3. Remove the front tires & OEM front shocks.
4. Remove the OEM lower track bar bolt on the passenger side end & lower the OEM track bar down. **Note:** It may be necessary to pry the track bar loose. (See Photo # 1)
5. Remove the OEM drag link assembly from the OEM pitman arm & lower it down. Remove the OEM pitman arm using a pitman arm puller & install the new Skyjacker drop pitman arm.
6. Remove the OEM sway bar end link lower bolts at the axle on both the driver & passenger side. (See Photo # 2)
7. Lower the front axle down until the OEM coil springs become loose & remove the OEM bottom bolt & clip from the left front OEM coil spring. (See Photo # 3)
8. Remove both the OEM coil springs & the OEM upper bump stops. **Note:** Use channel lock pliers working the OEM bump stop back & forth to remove.



9. Remove the OEM 10mm bolt from inside the OEM bump stop cup. Install the new Skyjacker bump stop spacer & OEM bump stop cup using the supplied 10mm x 90mm bolts. Reinstall the OEM bump stop in the OEM bump stop cup. (See Photo # 4)



10. Install the new Skyjacker coil springs. Raise the jack up so that enough load is applied to hold the new Skyjacker coil springs in place. Reinstall the OEM spring bolt & clip at the bottom of the left front coil spring.

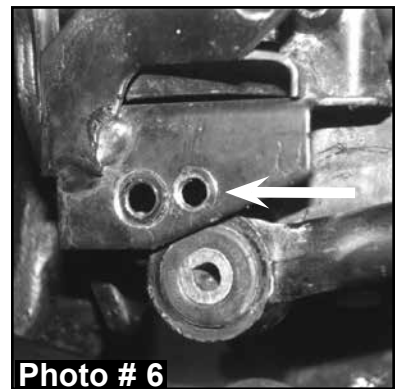
11. Install the new Skyjacker front shocks. (See Photo # 5)



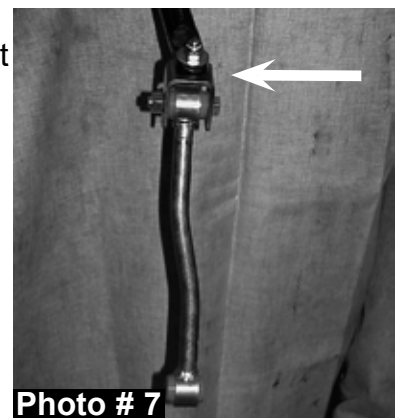
12. Reinstall the OEM drag link to the new Skyjacker pitman arm & tighten. **Note:** Be sure to install the OEM cotter pin.

13. Install the front tires & lower the vehicle to the ground.

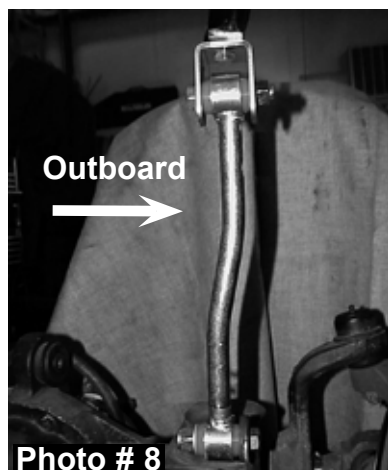
14. Locate the OEM front track bar mounting bracket on the axle, measure straight across (Inward) 3/4" & put a mark. Center punch & drill a 7/16" hole through both front & back plates, keeping the drill as straight & square to the bracket as possible. (See Photo # 6) Reattach the OEM front track bar using the OEM hardware.



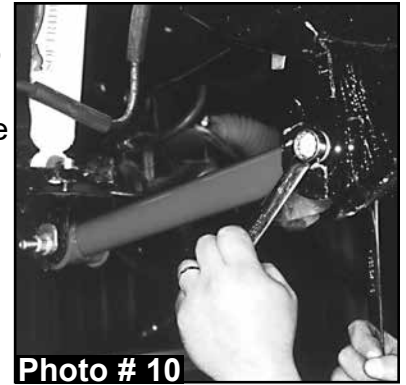
15. The new Skyjacker end link mounting bracket should be mounted to the bottom of the OEM sway bar with the bolt pointing up through the sway bar & the nut & washer applied on top. (See Photo # 7) **Note:** Apply lithium grease to the metal sleeves & insert the metal sleeves into the end link eyes. The top 1/2" x 2 1/2" bolt connecting the bracket to the end link must be installed with the nut to the outside of the vehicle to provide adequate clearance to the frame. Install the new Skyjacker end links on the inboard side of the axle, being sure that the offset is turned correctly. (See Photo # 8)



16. At the front lower link adjustment cams, mark (with an ink marker or scribe a mark) the vertical line on the cam & the reinforcement bracket for reference so you can realign the marks after installation. (See Photo # 9)



17. Remove the OEM lower links & replace the OEM lower links with the new Skyjacker extended lower links (One side at a time). (See Photo # 10) **Note:** Only start these bolts & nuts, do not tighten at this time. Once both lower links are installed, tighten each lower link being sure to realign the marks on the eccentric cams.



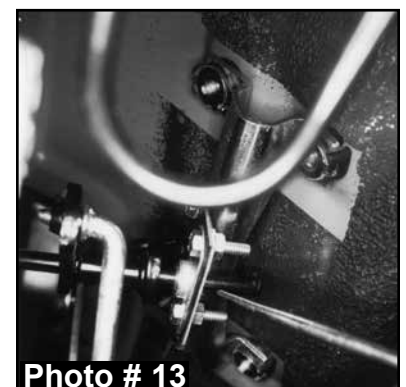
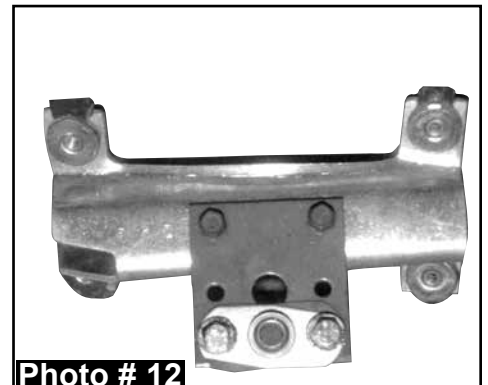
18. Place a jack under the OEM transfer case crossmember & remove the four screws that mount the transfer case pivot assembly from the body of the vehicle. **Note:** It will be necessary to roll the floor mat back to gain access to the OEM bolts.

19. Remove the three bolts on each side of the transfer case skid plate & lower it down enough to install the new Skyjacker square tube spacers between the skid plate & the frame. **Note:** 97-02 TJ models use the 1/2" x 3" flat socket head tapered bolts supplied & 03-06 TJ models will use the 12mm x 80mm flat socket tapered head bolts supplied. Apply a few drops of supplied thread lock compound on the bolt threads prior to installing. Tighten the bolts to 75-80 ft.lbs. (See Photo # 11)



Note: On 03-06 TJ models equipped with an engine skid plate, remove the two engine skid plate bolts. Install the small square tube spacers at the mounting points on the frame rails, along with the 12mm bolts supplied.

20. Install the new Skyjacker transfer case linkage pivot drop bracket to the OEM pivot bracket using the OEM hardware. Using the two 1/4" x 1" bolts with a flat washer & self-locking nut, bolt the ball swivel bracket (See Arrow in Photo # 12) to the new Skyjacker drop bracket **Note:** The bracket has two sets of holes. The bottom holes are for 4" lifts as shown & the upper holes are for 2 1/2" lifts. Placing the pivot bracket back in location & start the end of the rod through the ball swivel. Bolt the bracket back into location with the OEM hardware. (See Photo # 13)



Rear Installation:

1. Place a floor jack under the rear axle & raise the vehicle. Place jack stands under the frame ahead of the lower link bracket to support the vehicle.
2. Remove the rear tires & OEM rear shocks.
3. Remove the OEM rear track bar & OEM sway bar end link bolts at the axle.

4. Lower the rear axle down to remove the OEM rear coil springs. Remove both the OEM coil springs & the OEM upper bump stops. **Note:** Use channel lock pliers working the OEM bump stop back & forth to remove.

5. Remove the OEM 10mm bolt from inside the OEM bump stop cup. Install the new Skyjacker bump stop spacer & OEM bump stop cup using the supplied 10mm x 90mm bolts. Reinstall the OEM bump stop in the OEM bump stop cup. (See Photo # 14)

6. Place the new Skyjacker rear track bar relocation bracket in position & place the track bar in the new Skyjacker bracket. **Note:** Do not start its bolt. Start the supplied 12mm x 70mm bolt through the OEM lower track bar location using the supplied spacer sleeve with a self-locking nut & tighten the bolt to hold the bracket in place. (See Photo # 15)

7. Drill a 1/2" hole through the hole in the end of the new Skyjacker bracket. Remove the 12mm x 70mm bolt, installed before drilling, & install the 1/2" x 1 1/2" bolt, with a washer on each side, through the newly drilled hole & tighten the self-locking nut. Reinstall the new 12mm x 70mm bolt through the OEM track bar location using the supplied spacer sleeve (See Arrow in Photo # 16) with a self-locking nut. **Note:** Do not tighten at this time.

8. Install new Skyjacker rear coil springs. Raise the jack up so that enough load is applied to hold the coil springs in place.

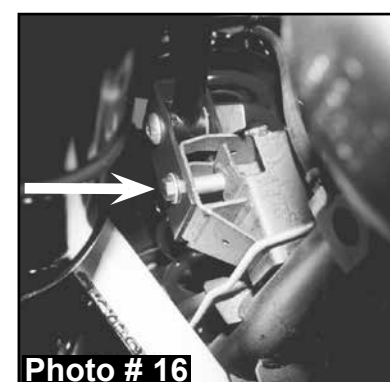
9. Remove & replace the OEM lower links with the new Skyjacker extended lower links (One side at a time). **Note:** Only start these bolts, do not tighten at this time. (See Photo # 17)

10. Attach the OEM track bar to the new Skyjacker relocation bracket on the axle & to the OEM upper location on the passenger side frame using the OEM hardware. **Note:** Do not tighten at this time.

11. Assemble the new Skyjacker rear extended sway bar links by applying grease to the metal sleeves & inserting them into each eye. Install using the OEM hardware. (See Arrow in Photo # 17)

12. Install the new Skyjacker rear shocks. (See Photo # 18)

13. Install the rear tires & lower the vehicle to the ground.

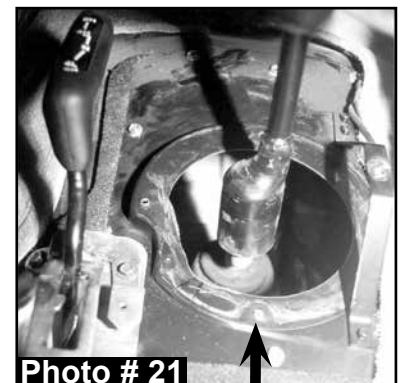
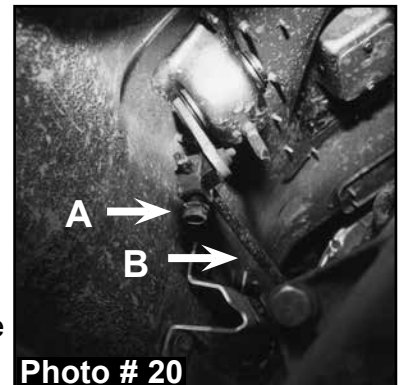
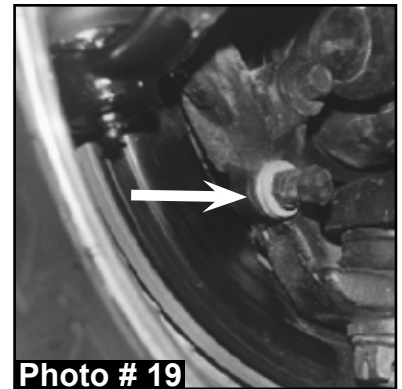


14. Tighten the rear track bar bolts on each end & the new bolt in the track bar relocation bracket.

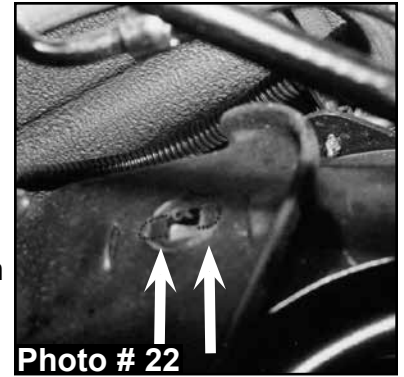
WARNING: On the Jeep Wrangler TJ models, only the shock absorbers limit the extended position of the front & rear suspension! The use of shocks other than those supplied in this system, may cause coil disengagement, adverse steering angles, brake hose failure, driveline component failure, and/or other related component failure! The use of other shocks will void your Skyjacker® warranty!

FINAL NOTES:

- Check the clearance between the inner side wall of the tires & lower links. **Note:** It may be necessary to adjust the steering stops by adding 2-3 washers on the bolt to eliminate interference. (See Arrow in Photo # 19)
 - Check the transfer case shifter to see if it will move to **4L**. If not, the linkage will need adjusting as follows. Place the shifter in **4L**, loosen the adjustment bolt ("A" Arrow in Photo # 20) & push the linkage ("B" Arrow in Photo # 20) forward until it stops. Now retighten the adjustment bolt. Check to be sure 4WD works properly.
 - On 5 speed models, engage the clutch & check the transmission shifter to see if it will go fully into 2nd gear. If not, the shifter housing on the floor will need trimming. Remove center console, pull back the carpet, remove the screws holding the shifter boot to the floor & trim or grind the floor board (See Arrow in Photo #21) until sufficient clearance is obtained. Shift through each gear to check the clearance at this time. Now reinstall the shifter boot, carpet, & console.
- Front end realignment is necessary so after the lift is installed have a qualified alignment center realign the vehicle to factory specifications.
 - Rotate the driveshafts & check for interference at the differential yoke & cardan joint. If necessary, lightly dress the casting(s) and/or U-joint tabs in order to eliminate binding.
 - Ensure there is adequate clearance between the exhaust, brake lines, fuel lines, fuel tank, floor board, & wiring harnesses. Check the steering gear for interference & proper working order. Test the brake system before driving.

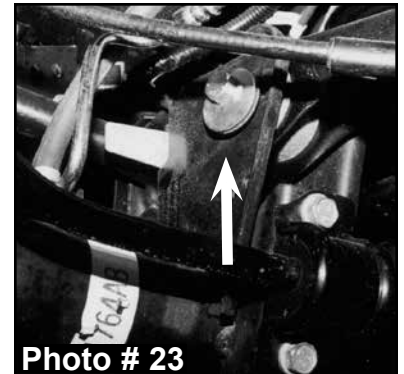


- With the vehicle on the floor, cycle the steering lock to lock & inspect the steering, suspension, driveline, & brake line systems for proper operation, tightness, & adequate clearance.
- Have the headlights readjusted to proper settings.
- Driveline vibrations can be caused from the removal or addition of the hardtop which changes the rear vehicle weight, & the rear height, which affects the rear drive shaft pinion angle. Skyjacker's adjustable eccentric upper cam-bolt kit (Part # CAM500) will eliminate such vibrations by adjusting / rotating the rear pinion angle up or down as needed.
- If you purchased the optional (Part # CAM500) Skyjacker TJ rear driveline cam-bolt kit, install them using the steps below.



1. Remove the bolt in the rear upper link (The end toward the rear bumper) & raise the link up out of the mount.

Note: The hole is notched so that it can be a slotted hole. Knock out the notches on the front & rear half of the holes on each side of the link mounts. (See Arrows in Photo # 22)



2. Lower the link back into the mount & install the new Skyjacker eccentric cam-bolt, eccentric washers, & nut on each link & tighten. These bolts can be rotated to adjust the axle pinion angle to eliminate any driveline vibration. (See Arrow in Photo # 23)



Jesus Christ Died For You.

John 3:16

For God so loved the world that He gave His only Son, so that everyone who believes in Him should not perish, but have everlasting life.
Romans 3:23

For all have sinned; all fall short of God's glorious standard.
Ephesians 2:8

God saved you by his special favor when you believed. And you can't take credit for this; it is a gift from God.
Psalms 18:2

The Lord is my Rock, my fortress, and my savior; my God is my Rock, in whom I find protection. He is my shield, the strength of my salvation, and my stronghold.
Romans 10:9-10

That if you shall confess with thy mouth the Lord Jesus, and shall believe in your heart that God hath raised him from the dead, you shall be saved. For with the heart man believeth unto righteousness; and with the mouth confession is made unto salvation.

Pray This Simple Prayer:

God, I come to You admitting I have sinned against You and I need you to take control of my life. The Bible says anyone who calls on the name of the Lord will be saved. I am calling on You, Jesus. I ask that You come live in my heart and be the Lord over my life today. I do believe You died on the cross for me and came back to life to give me life! Thank You, Lord Jesus for a new life in You!

Now, go and tell somebody about your new life in Jesus, get a Bible, begin to read it, and go to a Bible believing church.

If you would like someone to pray with you, call Kenneth Copeland Ministries anytime at 800-600-7395.

To listen to commercial free Christian radio on the web, go to www.887fm.org

Jesús murió por ti.

Juan 3:16

"Porque tanto amó Dios al mundo, que dio a su Hijo unigénito, para que todo el que cree en él no se pierda, sino que tenga vida eterna."
Romanos 3:23

"Pues todos han pecado y están privados de la gloria de Dios."
Efesios 2:8

"Porque por gracia ustedes han sido salvados mediante la fe; esto no procede de ustedes, sino que es el regalo de Dios."
Salmos 18:2

"El Señor es mi roca, mi amparo, mi libertador; es mi Dios, el peñasco en que me refugio. Es mi escudo, el poder que me salva, ¡mi más alto escondite!"
Romanos 10:9-10

"¿Que si confi esas con tu boca que Jesús es el Señor, y crees en tu corazón que Dios lo levantó de entre los muertos, serás salvo. 10 Porque con el corazón se cree para ser justificado, pero con la boca se confía esa para ser salvo."

Ahora dí esta simple oración:

Dios, vengo a Ti y admito que he pecado contra Ti, necesito que tomes el control de mi vida. La Biblia dice que todo aquel que invoca el nombre del Señor escapará con vida. En este momento yo clamo ante Ti, Jesús; te pido que vengas a vivir en mi corazón y que tomes el control de mi vida. ¡Yo creo que tu moriste en la cruz y resucitaste para darme vida! ¡Gracias Señor Jesús, por una nueva vida que tengo en Ti! Amen.

Ahora ve y dile a alguien sobre la nueva vida que tienes en Cristo. Compra una Biblia y empieza a leerla. Busca una Iglesia que cree en la Biblia y hazte parte de esa Iglesia.

Si te gustaría orar con alguien, puedes llamar a este número 800-600-7395

Puedes ir a este sitio de Internet para escuchar música Cristiana sin anuncios, www.887fm.org

Check out our favorite ministries at:

www.innministries.org

www.familychurch.org

www.kcm.org

