

THE INFORMATION CONTAINED IN THIS DRAWING IS THE SOLE PROPERTY OF SYNERGY MFG. ANY REPRODUCTION IN PART OR WHOLE WITHOUT THE WRITTEN PERMISSION OF SYNERGY MFG IS PROHIBITED.

Revisions			
Rev.	Description	Date	Approved
A	Initial Release Per ECO 19-010	1/18/19	A.S.



Jeep JL Front Sway Bar Link Relocation Brackets

Installation Instructions

Applications:
2018+ Jeep Wrangler (JL/JLU)



TITLE:
**JEEP JL FRONT SWAY BAR LINK
RELOCATION BRACKETS
INSTALLATION INSTRUCTIONS**

SIZE	DWG NO:	REV
A	8855-02-INST	A
	SCALE: N/A	PAGE 1 OF 4

PARTS LIST

8855-02 SWAY BAR LINK RELOCATION BRACKETS		
QTY	Part Number	Description
2	885502-01-PC	Sway Bar Link Relocation Bracket
4	N/A	M12 x 1.75 x 40MM Grade 10.9 Bolt
4	N/A	M12 x 1.75 Top Lock Nut
8	N/A	M12 Flat Washer

GENERAL NOTES

- These instructions are also available on our website; www.synergymfg.com. Check the website before you begin for any updated instructions and additional photos or videos for your reference.
- These sway bar link relocation brackets are designed to be used with Synergy coil springs. If Using with stock coil springs, or other springs that use the stock lower spring isolator, then the isolator will need to be trimmed in order to fit the brackets.
- These sway bar link relocation brackets are designed to be used with lifts 2" or taller.

TOOLS REQUIRED

- 18mm and 19mm Sockets and Wrenches
- Rubber or other soft face mallet, or conventional hammer with wooden block.

INSTALLATION

1. Installation is best done with springs removed, but may be done with springs in place. These instructions assume the brackets are being used with Synergy springs. If using with a stock lower spring isolator, the isolator must be trimmed as shown in **Figures 1 and 2**.



Figures 1 and 2. Trimming Stock Lower Spring Isolator

2. Make sure vehicle is parked on a flat level surface with transmission in park or in gear and parking brake set.
3. Remove front sway bar end links from axle brackets.
4. Synergy sway bar relocation brackets are not right/left specific. They have a radius to accommodate the axle tube. Insert relocation brackets in between stock axle side sway bar link brackets and coil mounts. It may be necessary to tap brackets into place. **See Figure 3.**

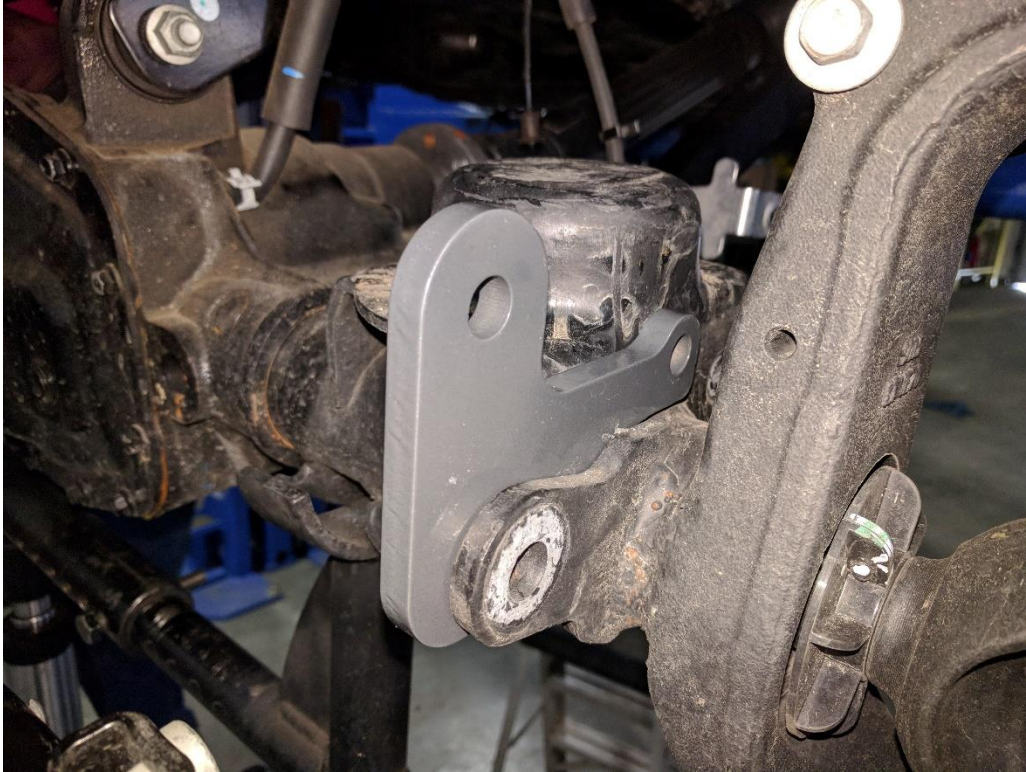
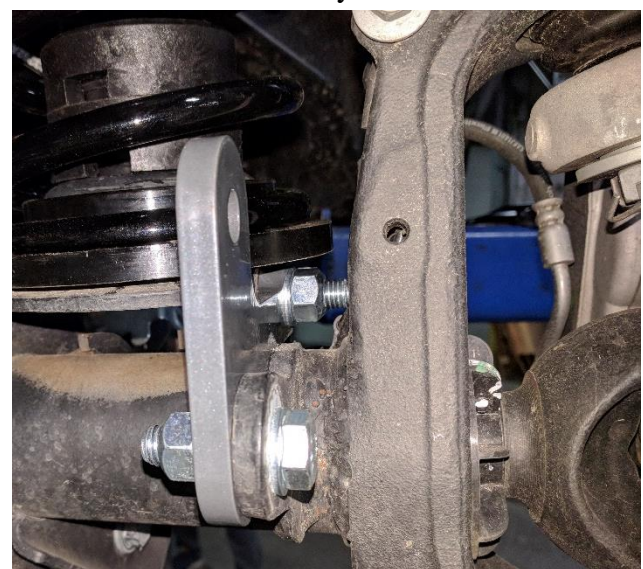


Figure 3. Sway Bar Bracket Orientation

5. Align the inner Synergy sway bar link relocation bracket hole with the hole in the lower spring perch. Loosely install an M12 bolt through the spring perch and the Synergy sway bar link relocation bracket. Use a washer under the head of the bolt and under the nut. We recommend installing the hardware with the bolt head facing 'in', towards the center of the vehicle.
6. It may be necessary to use a soft face mallet (or a block of wood with a metal hammer) in order to get the stock sway bar mount hole to line up. Once the forward hole is aligned, loosely install an M12 bolt through the stock sway bar mount and the Synergy sway bar link relocation bracket. Use a washer under the head of the bolt and under the nut. We recommend installing the hardware with the bolt head facing 'out' towards the wheel. **Figures 4 and 5** show correctly installed brackets.



Figures 4 and 5. Correctly Installed Brackets (Passenger side on Left, Driver on Right)

7. With all 4 pieces of hardware installed, tighten and torque to 70 lb-ft.
8. Re-install sway bar end links with factory hardware in upper hole in Synergy sway bar relocation brackets. The bushing end of the link attaches to the axle, on the inside of the tab (towards the center of the vehicle). If re-using the factory rear sway bar links up front, you will need to re-use the factory flag nut as shown in **Figure 6**. **Figures 7 and 8** show correctly installed links.

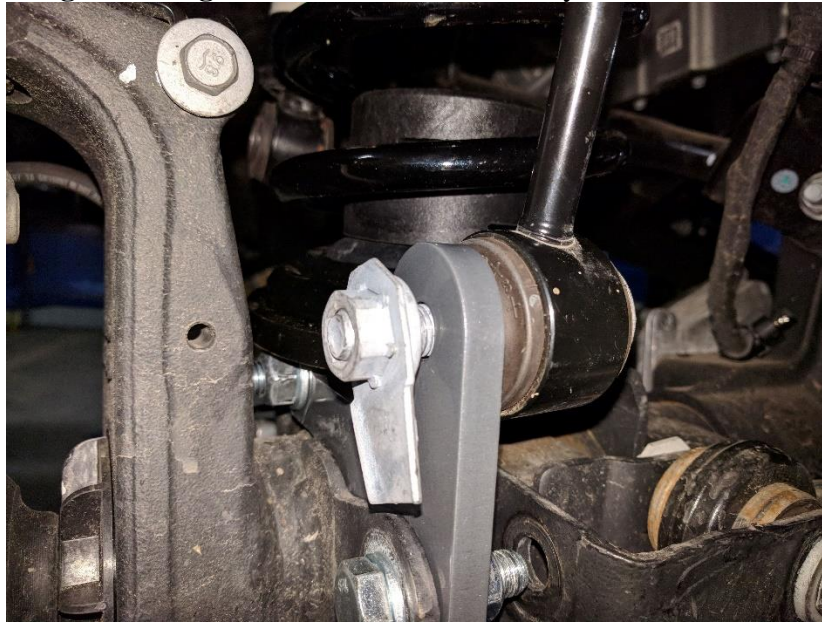


Figure 6. Re-Using Rear Sway Bar Links in the Front with Stock Hardware



Figures 7 and 8. Correctly Installed Sway Bar Links (Passenger side on Left, Driver on Right)

9. Check bolt torques after approximately 100 miles.