

THE INFORMATION CONTAINED IN THIS DRAWING IS THE SOLE PROPERTY OF SYNERGY MFG. ANY REPRODUCTION IN PART OR WHOLE WITHOUT THE WRITTEN PERMISSION OF SYNERGY MFG IS PROHIBITED.

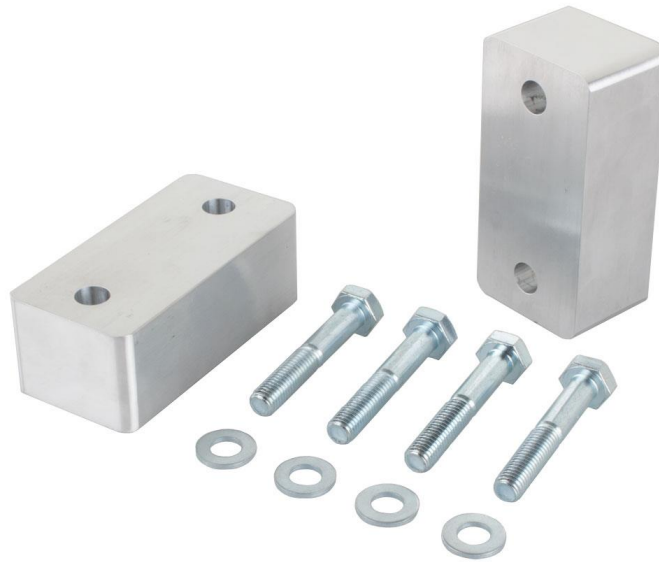
Revisions			
Rev.	Description	Date	Approved
A	Initial Release Per ECO 19-010	1/18/19	A.S.



## Jeep JL Rear Sway Bar Drop Brackets

### Installation Instructions

Applications:  
2018+ Jeep Wrangler (JL/JLU)



TITLE:  
**JEEP JL REAR SWAY BAR DROP BRACKETS INSTALLATION INSTRUCTIONS**

SIZE	DWG NO:	REV
<b>A</b>	<b>8886-02-INST</b>	<b>A</b>
	SCALE: N/A	PAGE 1 OF 3

## PARTS LIST

8886-02 SWAY BAR DROP BRACKETS		
QTY	Part Number	Description
2	888602-MA	Sway Bar Relocation Block
4	N/A	M10 Flat Washer
4	N/A	M10 x 1.50 x 60mm Grade 10.9 Bolt

## GENERAL NOTES

- These instructions are also available on our website; [www.synergymfg.com](http://www.synergymfg.com). Check the website before you begin for any updated instructions and additional photos or videos for your reference.
- These rear sway bar link drop brackets are designed to be used with lifts 2” or taller.

## TOOLS REQUIRED

- 15mm and 17mm Wrenches or Sockets

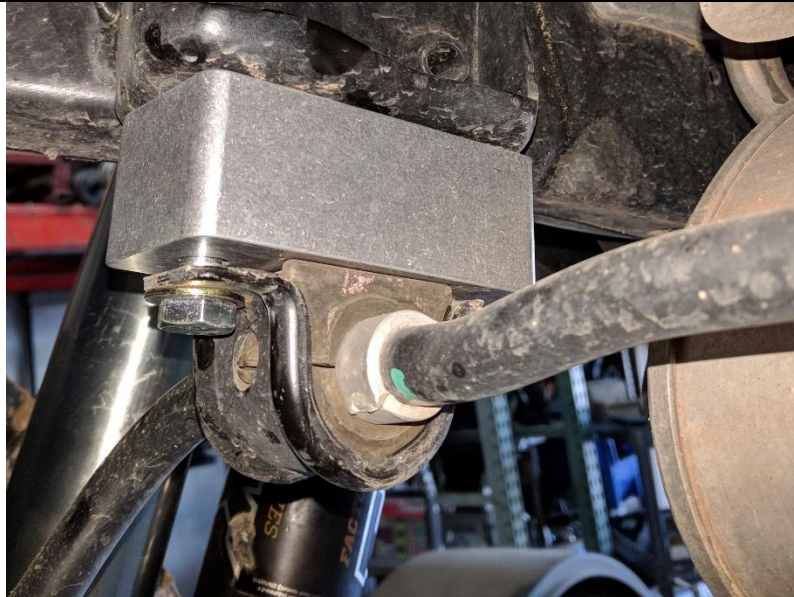
## INSTALLATION

1. Make sure vehicle is parked on a flat level surface with transmission in park or in gear and parking brake set.
2. Remove two bolts holding driver side rear sway bar bracket to frame. Discard hardware. See **Figure 1**.



**Figure 1. Driver Side Rear Bracket Removed from Frame**

3. Loosen but do not remove hardware holding passenger side rear sway bar bracket to frame. Sway bar should be loose and able to move.
4. Install spacer block in between driver side frame and sway bar bracket. Loosely install provided hardware with a washer under the bolt head. See **Figure 2**.



**Figure 2. Driver Side Spacer Block Installed**

5. Remove passenger side bracket from frame and discard hardware.
6. Install spacer block in between passenger side frame and sway bar bracket. Loosely install provided hardware with a washer under the bolt head.
7. Make sure brackets and sway bar are centered. See **Figure 3**.



**Figure 3. Passenger Side Spacer Block Installed**

8. Torque mounting hardware to 35 lb-ft.
9. Check bolt torques again after approximately 100 miles.